

User Guide NetComm PDAView

Mobile Software for Pocket PC 2003



Introduction

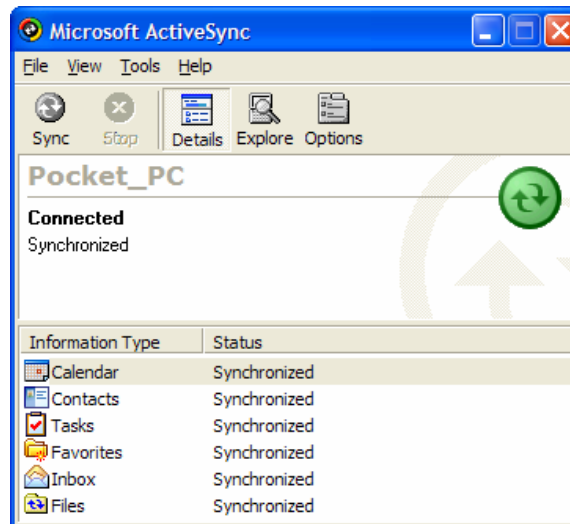
PDAView Mobile software provides a convenient way to view the video feed from NetComm's network cameras and video servers with a pocket PC running the Microsoft® Pocket PC 2003 operating system.

System Requirements

- A Pocket PC device with an ARM or XScale processor
- Microsoft® Pocket PC 2003
- An Ethernet connection (wired or wireless)
- Microsoft® ActiveSync®

Installation

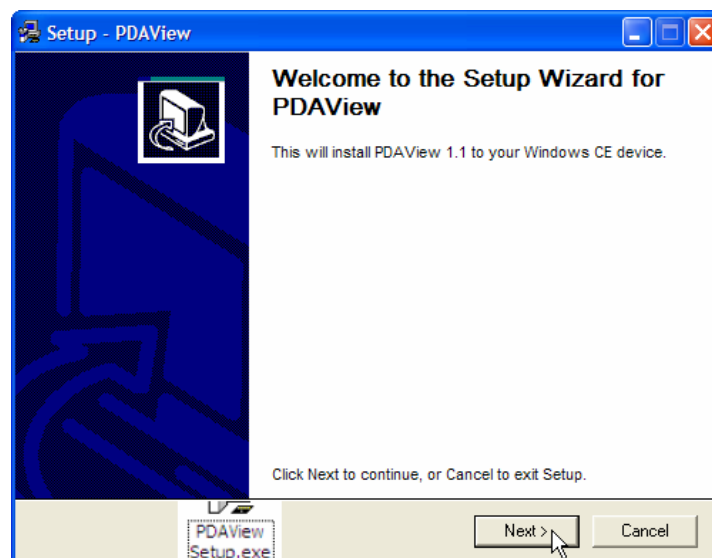
1. Connect to the device with Microsoft ActiveSync:



2. On the host PC, locate and run the PDAViewSetup.exe file:



3. At the welcome screen for PDAView, click Next:



4. Follow the remainder of the installation of PDAView by following the prompts.

Configuration

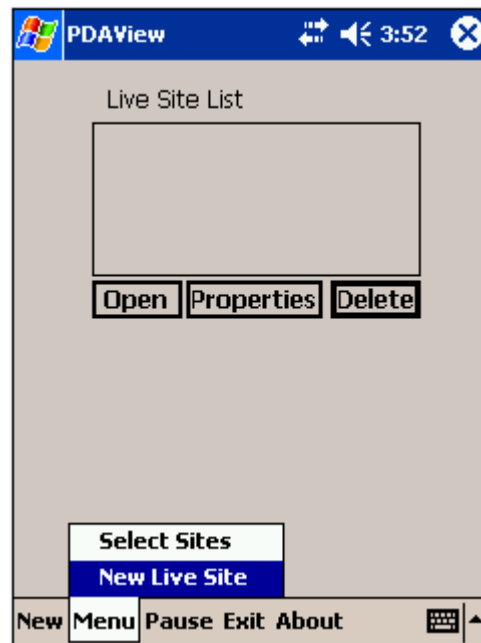
1. On the PDA tap Start → Programs:



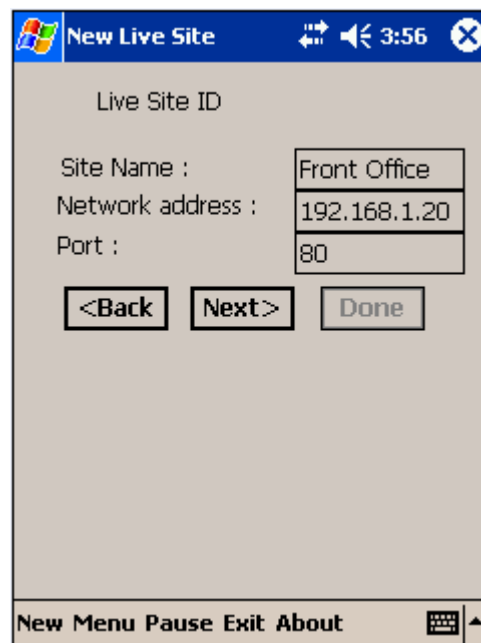
2. Tap PDAView:



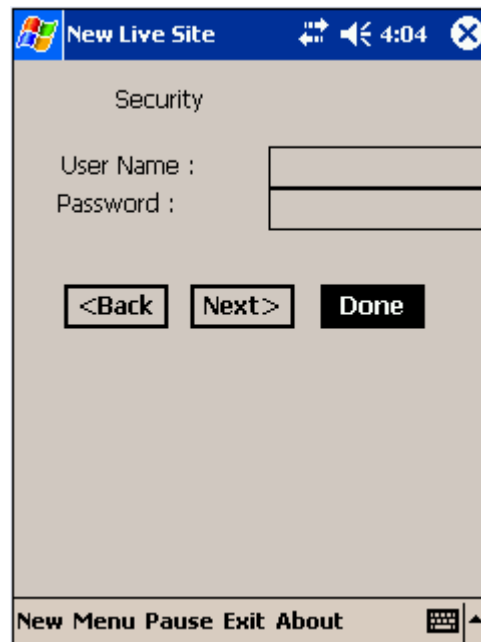
- From the Menu bar in PDAView select Menu → New Live Site:



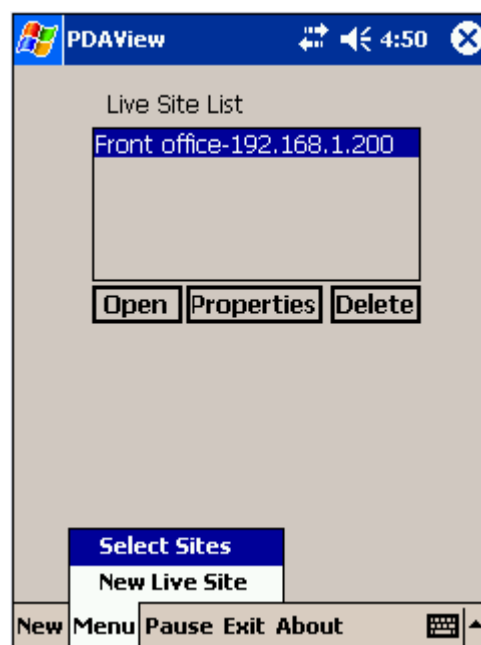
- Enter the requested information for the network camera or video server:



5. Enter the username and password to access the network camera or video server (if necessary), and click Done:



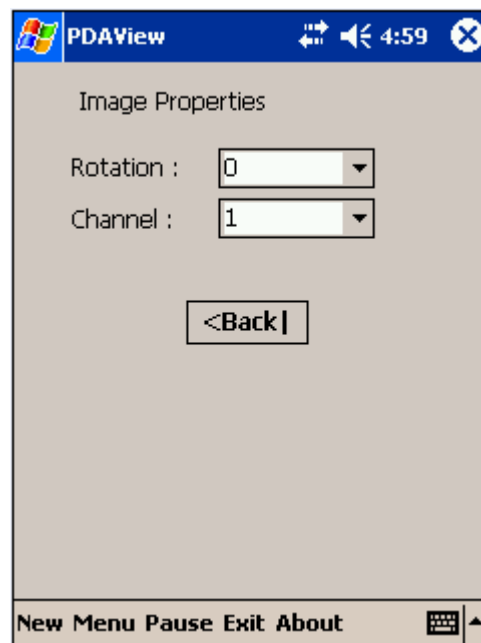
6. Tap Menu → Select Sites:



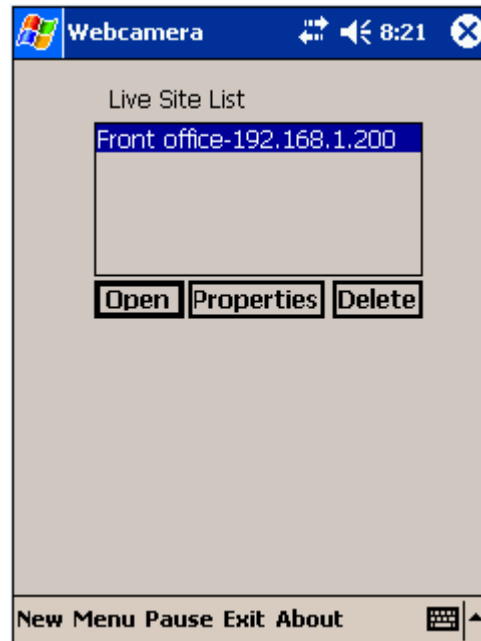
7. To configure a video server or change the view to landscape view, select the device from the Live Site List and tap Properties:



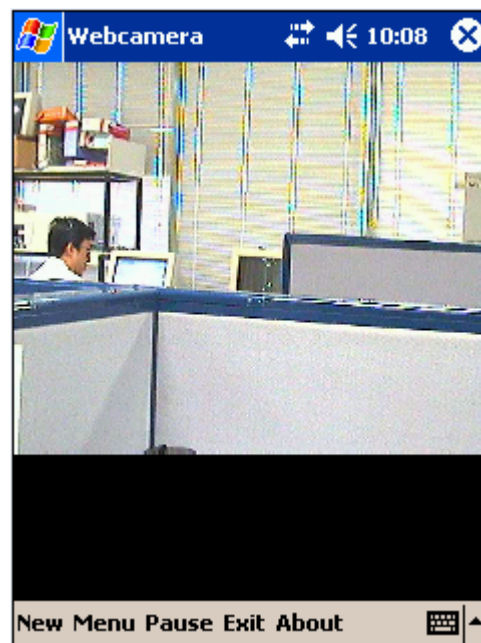
8. To rotate the image to landscape view enter 9 in the rotate field which will rotate the image 90°:



- To display a site, select it from the list and tap Open:



- Portrait view (default):



11. Landscape view (Properties → Rotate 90°):



12. To return to the list of sites, tap Pause → Pause:



13. To quit PDAView, tap Exit → Exit:

