

Installation Guide for Windows Series 98SE/ME/2000/Vista and XP

System Requirements

- Computer with Pentium 200 MMX or higher processor.
- Windows 98SE/ME/2000/Vista and XP Operating System.
- 20 MB Hard Disk free space or above
- Sound card for voice features
- 1 available PCI slot.
- CD-ROM drive.

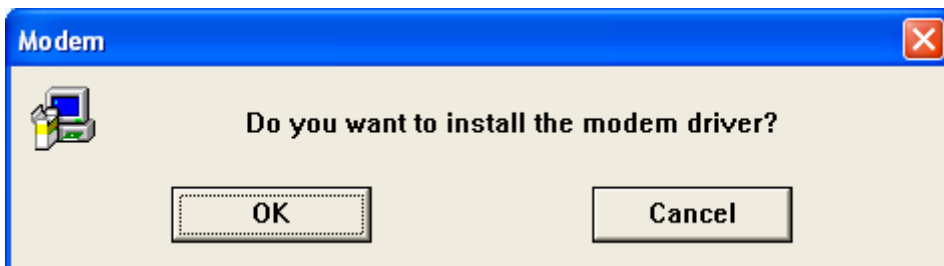
Modem Installation

1. Please turn off your computer and disconnect the power cable.
2. Please remove the cover from your computer. Please check your computer's manual for instructions and cautions regarding the removal of covers or installation of add-in boards.
3. Please select an empty PCI slot and remove the appropriate expansion slot cover from the computer.
4. Please insert the Internal 56k Modem into the PCI slot and secure with a screw in the backplane.
5. Please replace the Computers cover.
6. Please insert one end of the telephone cord into the Modem's Line (top) Socket
7. Please connect the other end of the phone cord to a telephone phone point, via the supplied adaptor (RJ11) if required.
8. Please turn on your computer.
9. As Windows 98SE/2000/ME/XP/Vista starts it will detect that new hardware has been added, and start the **"Add New Hardware Wizard"** Click on **Cancel**.
10. Please insert the analog Modem communication CD into your CD-ROM drive.
11. The CD should auto-start, displaying the following window. If it does not start, click on Start – Run and type in CD:\autorun.exe (where CD is the drive letter of your CD-ROM drive).

12. Please select “Install Modem Driver”.



13. Please select “OK”.



14. Click "**Continue Anyway**" to finish the installation.
(NT/98SE/ME/2000/Vista USER, please skip this step)



If you can not perform these procedures smoothly as above, please perform the file directly:

CD:\Autorun.exe