

## Dynalink 56K Modem Installation Guide

- A Macintosh computer with a free serial port is required for the installation of the external version of this modem.

---

### *What you will find on the diskette provided*

**Installer** - OPTIONAL - This installs FaxSTF: a collection of programs that work together to enable your modem to send, receive and view faxes. This is not required for Internet access.

**Dynalink 1456VQE-C** - Modem script file - enables the Modem's control panel to communicate with the Dynalink 1456VQE-C external modem.

### *First steps in installing your new modem*

1. If you already have an internal modem installed in your computer, it would be internally connected to the modem port. This WILL conflict with any other modem that you might connect. You can either:
  - a) Have the internal modem and all its related software removed by a qualified technician - we highly recommend this option, or
  - b) Remove all related software AND do not use the modem port but only the printer port (this option is only applicable if you do not use the printer port for other applications).
2. Find out what Operating System (OS) you are currently running on your Macintosh. To achieve this, select "About this Computer" (or "About this Macintosh") from the Apple menu (top

left corner of your screen) on startup and the version of OS should be displayed in the dialogue box that opens.

3. Before any installation or set-up, check all your computer's volumes with "Disk First Aid", which can be found with your original system software or, if you have System 8 or later "Disk First Aid" can also be found in the Utility folder on your hard disk.

### ***If your System is earlier than System 7.5.5***

- Systems predating System 7.5 do not directly support the IP protocol required for connecting to the Internet. However, faxing is still possible with earlier versions of System 7.
- Although software is available to enable earlier systems to support the required protocols, we highly recommend upgrading to System 7.5.5 - for compatibility and stability.
- System 7.5.5 is available freely from Apple Computer's file transfer Internet site:

[ftp://ftp.apple.com.au/pub/Apple\\_SW\\_Updates/English-International/Macintosh/System/Full\\_Installs/System\\_7.5\\_Version\\_7.5.3/](ftp://ftp.apple.com.au/pub/Apple_SW_Updates/English-International/Macintosh/System/Full_Installs/System_7.5_Version_7.5.3/)

(Please note: "Open Transport 1.1.2" and "Open Transport PPP 1.0.1" will **also** be required and will need to be obtained as well).

### ***Installation for system 7.5.5 only***

For the installation of your modem under System 7.5.5, "Open Transport" will need to be installed. (There are other configurations under System 7.5.5 but we have found this method to be the most stable.) "Open Transport 1.1.2" & "Open Transport PPP 1.0.1" are required for this installation. These can be obtained from Apple Computer. (Please see the Contacts list at the end of this documentation).

1. First install "Open Transport 1.1.2". Your machine will need to restart after this process.
2. Next install "Open Transport PPP 1.0.1", again the machine will need to restart after this process has been completed.
3. Copy the modem script, which is appropriate for your modem, from the Dynalink floppy into the "Modem Scripts" folder located in your "Extensions" folder within your active "System Folder". (You should only have one System folder at root level.)

4. Once the modem script is copied, go to the "Modem" control panel and:
  - Select the port to which the modem is attached.  
(Normally, this should be the modem port. This port is symbolised with a telephone icon on the back of your machine.)
  - Select the appropriate Dynamalink modem script from the Modem (pop-up menu) selection and close the control panel. When prompted to save, select OK.

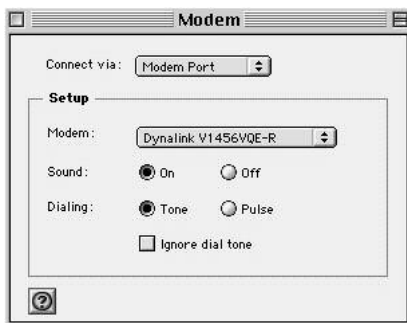


Fig. 1

### ***Installation for System 7.6.1 - System 8.1***

1. For the installation of the Dynamalink modem under these versions of MacOS, Open Transport is required. To confirm that it is installed, check that the control panels "PPP", "TCP/IP" and "Modem" are visible in the Control Panels list (accessible via the Apple menu). If any control panel is missing you will need to go back to your original system software installer and install the "Open Transport" component.
2. Copy the modem script, which is appropriate for your modem, from the Dynamalink floppy into the "Modem Scripts" folder located in your "Extensions" folder within your "System Folder". (If this folder does not exist, Open Transport may need to be installed again).
3. Once the modem script has been copied, go to the "Modem" control panel and:
  - Select the port to which the modem is attached.  
(Normally, this should be the modem port. This port is symbolised with a telephone icon on the back of your machine.)

- Select the appropriate Dynalink modem script from the modem (pop-up menu) selection and close the control panel. When prompted to save, select OK.

See Fig. 1 (above) for illustration.

### ***Installation for Systems 8.5 and above***

1. These versions of MacOS should already have Open Transport installed. Check that the control panels "Modem", "Remote Access" and "TCP/IP" are visible in the Control Panels submenu (in the Apple menu - top left corner). Note that the Remote Access control panel is basically the same as the PPP control panel found in earlier system versions.
2. If some are missing, they may have been either switched off (check the Extensions Manager control panel) or accidentally removed. You may need to go back to your original system software CD and reinstall the "Remote Access" component.
3. Copy the modem script which is appropriate for your modem, from the Dynalink distribution floppy into the "Modem Scripts" folder located inside the "Extensions" folder within your "System Folder".
4. Once the modem script is copied, go to the "Modem" control panel and:
  - Select the port to which the modem is attached. (Normally, this should be the modem port. This port is symbolised with a telephone icon on the back of your machine.)
  - Select the appropriate Dynalink modem script from the modem (pop-up menu) selection and close the control panel. When prompted to save select OK.

See Fig. 1 (above) for illustration.

---

## ***Steps required to set up an Internet connection***

### Requirements

In order to connect to the Internet you will need an account with an Internet Service Provider (ISP). This may be the service provider whose promotional material is shipped with this modem or any other service provider.

Once you have chosen an ISP and opened an account with them, they will provide you with the following information:

Information required to connect to the Internet

- **Username** (lower case usually, in the form: username)
- **Password** (case sensitive - "password" is different from "Password")
- **Dial-in phone number** (you may have to add a prefix such as '0' to get an outside line if you are going through a PABX. Also, a comma within the number creates a delay of 2 seconds.)
- **Primary DNS** (in the form 123.123.123.123)
- **Secondary DNS** (in the form 123.123.123.123)
- **Search Domain or Domain Name** (optional) (in the form myisp.com.au)

Information that may be required to browse the Internet

- **Proxy & Proxy Port** Or **Automatic Proxy Configuration URL**

Additional information required for emailing

- **Email address** (in the form username@myisp.com.au)
- **Incoming (POP) mail server** (in the form 'mail.myisp.com.au' or 'pop.myisp.com.au')
- **Outgoing (SMTP) mail server** (in the form 'mail.myisp.com.au' or 'smtp.myisp.com.au')

In addition to an ISP, software is required in order to browse the Internet and/or send/receive email. Many other more specialised applications are also available for file transfers (FTP), online chat (IRC), online games etc.

In later systems (systems later than MacOS 8.0) the required programs are already installed. Those with earlier systems will have to obtain at least a Web browser and an

email program from your service provider. Many low cost (shareware) or free applications can be downloaded from the Internet. Also, good selections of these utilities can often be found on disks shipped with current IT magazines. Commonly used programs include Netscape Communicator and Microsoft Internet Explorer + Outlook Express. Please check compatibility with your system before installing. (Eg. On a 680xx Macintosh running system 7.5.5 the latest version of Netscape that can be used is version 4.05 / 68K).

Entering the details in the appropriate places.

The actual settings are relatively simple, in that all you have do is to feed the numbers supplied to you by your ISP into the corresponding control panels.

1. First, open your PPP control panel (Remember for those who are using system 8.5 or above that this control panel is named "Remote Access")
2. Put your username, password & dial-in number in the appropriate places in the control panel.

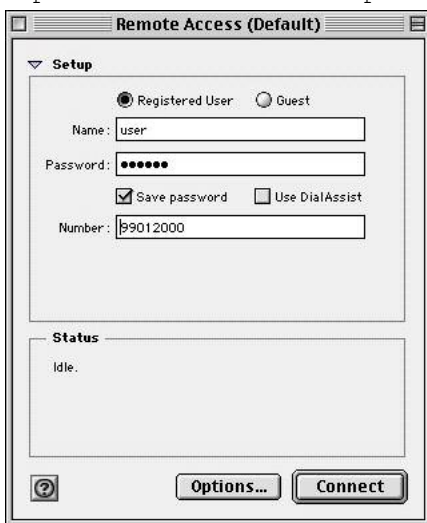


Fig. 2 (Example Only)

3. Press the options button on the bottom of the control panel and in the protocol tab ensure the checkbox selected for

"Error Correction & Compression" checkbox is marked and select "OK"

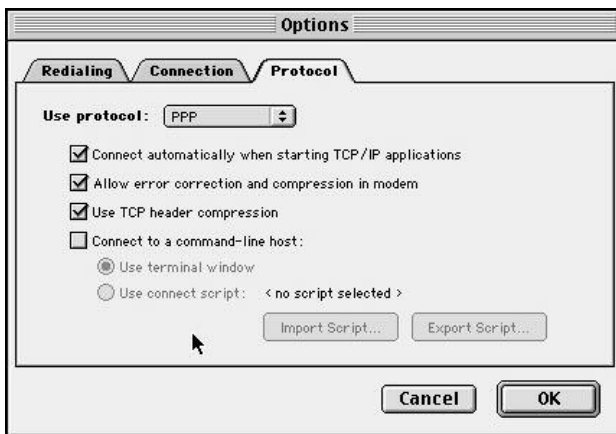


Fig. 3

4. Open the "TCP/IP" control panel. If you get a message asking you whether you wish to activate TCP/IP select "Yes"
  5. Connect Via PPP should be selected in the control panel
  6. Configure the TCP/IP to "Using PPP Server"
  7. In the "Name server addr:." Enter your primary & secondary DNS Numbers
- \* *For more information about TCP/IP and what it is all about, see the appendix at the end of the Internet installation notes.*

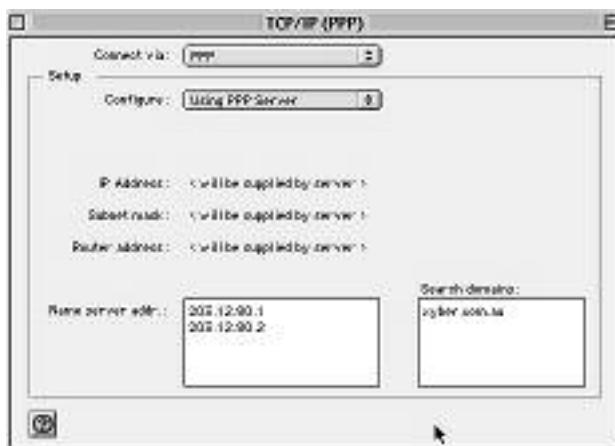


Fig. 4

Only)

(Example

8. Enter your search domains in the adjacent box (not always required).

9. Close your TCP/IP control panel. When prompted to save settings, choose OK.

## ***Connecting & disconnecting from the Internet***

To connect to the Internet, use the "PPP" or "Remote Access" control panel. Note that you can also set the PPP options so that opening a program that needs a TCP/IP connection (such as Netscape) will automatically open a connection. There are also utilities that would open and close the connection and keep track of the times involved.

Please note that quitting your browser or email program will **not** disconnect you from the Internet. Disconnection will only occur through:

- Going to the PPP control panel and choosing Disconnect.
- Using utilities that will specifically do the disconnection for you.
- The PPP control panel disconnecting automatically due to lack of activity (check the PPP options).
- Restarting the computer (with TCP/IP set to only activate when needed - options in Advanced user mode).

---

## ***Troubleshooting***

•Note that some early automatic Internet installers placed a copy of MacTCP in your control panels. MacTCP is incompatible with TCP/IP.

•If you ran the Open Transport installation, went to set the control panels and found no TCP/IP, but instead MacTCP (probably left behind by a previous installation attempt), you will need an application called "Network Software Selector". (Just do a find file - it is usually located in the Apple Extras folder). Run it, set to "Use Open Transport Networking" (see Fig. 5) and restart your Macintosh. You should find MacTCP replaced by TCP/IP in the control panels.

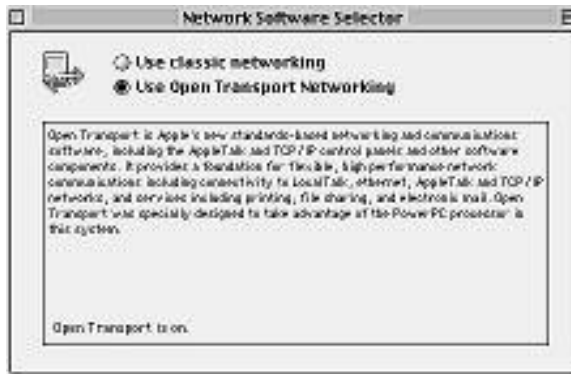


Fig. 5

• If you are having problems connecting to your ISP or the connection drops off, try disabling (unchecking) "Error Correction & Compression" in the options of the PPP (or Remote Access) control panel.

## ***Appendix - How does it all work together?***

The Internet is a very large network of computers. To be able to communicate with each other, they must all use the same language (or, when it comes to computers - the same protocol). The Internet's native language is called the Internet Protocol (IP for short). So, for any computer to connect, it must be able to implement an IP data stream. On a Macintosh, this is done via three system additions called Control Panels.

- The **TCP/IP** control panel specifies how the computer should connect to the Internet (via the Internet Protocol - IP). There are many possible ways to do that. In the case of a modem connection, the data stream would go via Point-to-Point Protocol (PPP). The TCP/IP control panel needs to know who could translate the Internet names that it is being asked for (such as [www.apple.com](http://www.apple.com)) into actual IP addresses that it could then access. This is done by a Domain Name Server (DNS) at the ISP. So you must enter the DNS's address in the appropriate box. (IP addresses are 32 bit numbers that are usually specified as a group of four numbers separated by a full stop - eg: 192.168.0.25.) As the DNS function is so important, there is usually a secondary DNS, in case the main one is busy. Its IP address needs also to be entered.
- The **PPP/Remote Access** control panel must be set so that the (Point to Point Protocol) data stream goes via the modem, to

the right location (dial-in phone number) and that it gets recognised as legitimate (username and password combination).

- The **Modem** control panel settings that you have already done tell the computer how to communicate with the modem itself.

---

## ***Steps required to fax with your Dynalink modem***

### Install the Fax Software

Run the Installer from the Dynalink distribution diskette.

**Note:** Fax software installation is not required under System 9 as a later version is already installed as part of the system. Installing the Fax software under OS 9 may cause problems and should not be attempted.

### Modem selection

In the fax installation you will be queried as to what modem you are using with Fax STF. As the Fax STF program pre-dates the current modem model you will not find a selection that matches your modem type.

Xyber recommends that you use the first Driver Type "Class 1 for 14400 send/receive modems". This selection has been tested and found to have no compatibility problems. (To do this you will first have to select the "Driver Type" radio button above your selections).

### FAX STF Support

In the installation of your fax software you will find a comprehensive manual in how FaxSTF operates. Please read this documentation before contacting tech support.

**Please note:** The modem must be ON before the computer is started. (The modem must be active before the fax software is enabled).

## **Contacts**

### ***Xyber Computer Service Centre***

Complete Macintosh service and Data Recovery centre

Tel (02) 9906-7976, Fax (02) 99063620  
28 Chandos St, St Leonards, NSW 2065  
Email: [service@xyber.com.au](mailto:service@xyber.com.au)

### ***Apple Updates***

Apple Computer Australia - Software Updates - Tel 133-  
622  
<ftp.apple.com.au>