



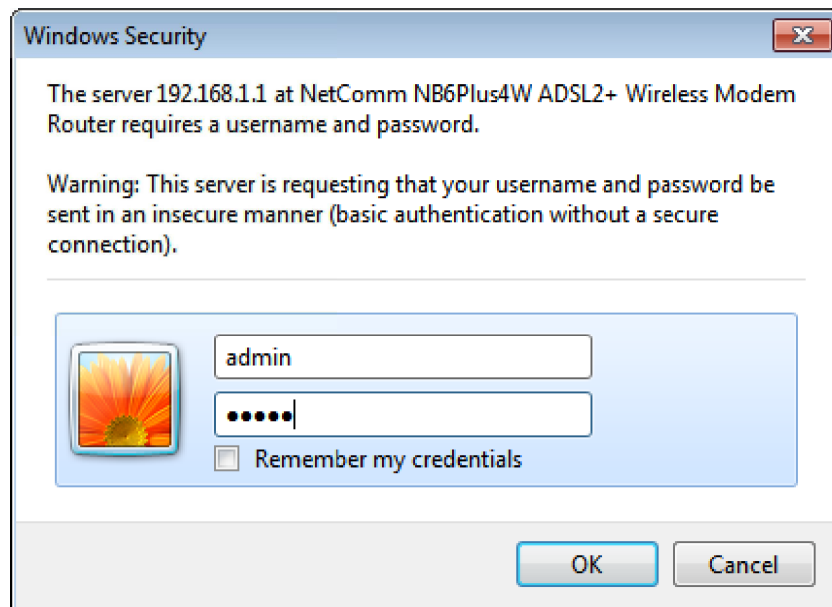
## **IPTV Setup Guide**

( NB6Plus4W Rev1 / RTA1025W Rev1 )

## IPTV Setup Guide

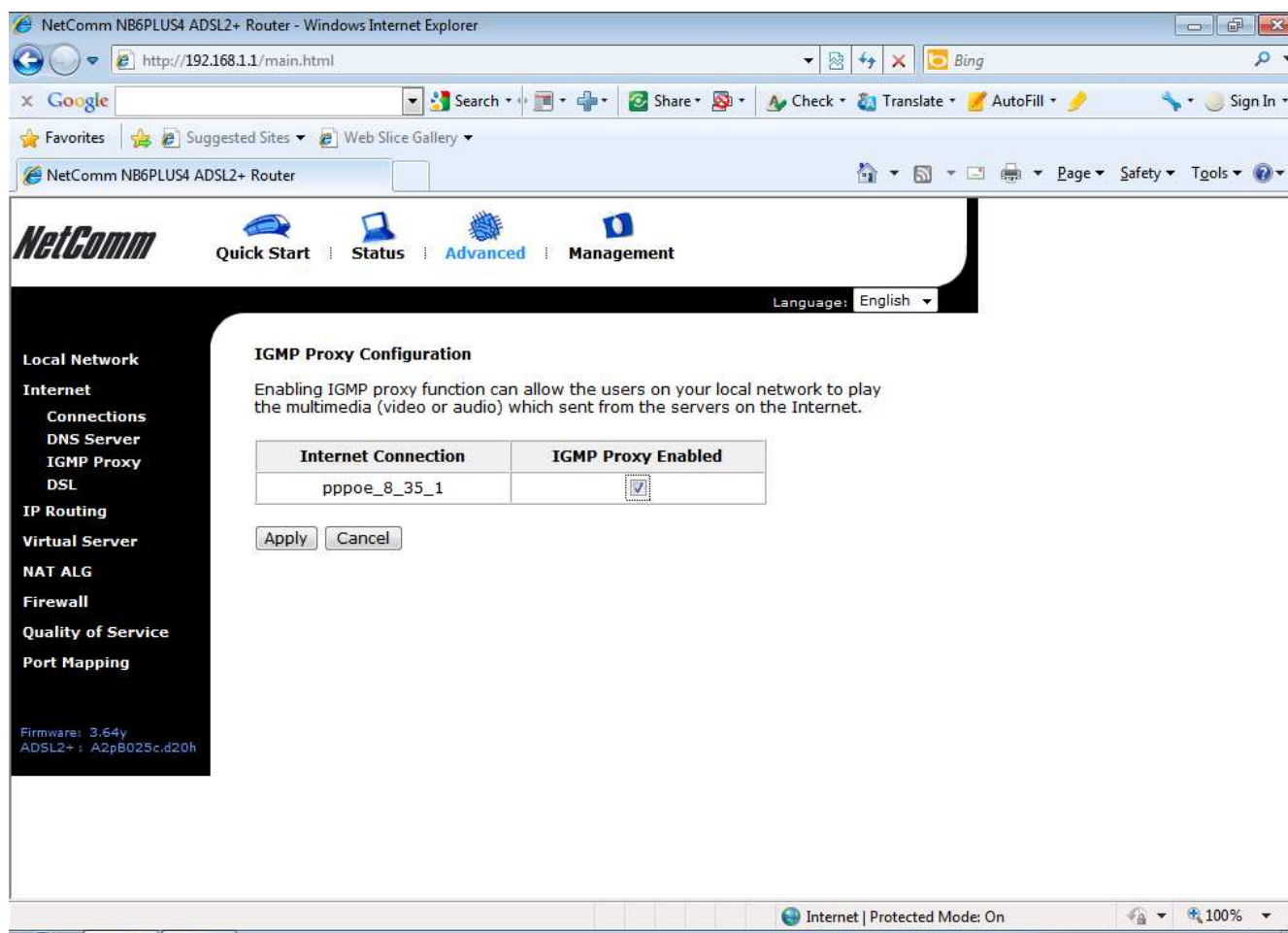
This guide will take you through the process of configuring a VLAN on your modem/router to work with IPTV.

1. Navigate to <http://192.168.1.1> in a web browser.



2. Enter "admin" (without quotes) for both the username and password when prompted and press Ok.



3. Select Advanced > Local network > IGMP Proxy.



4. Check to enable the **IGMP proxy** and press Apply.

5. Select Advanced > Internet > Connections.

The screenshot shows the NetComm NB6PLUS4 ADSL2+ Router web interface in a Windows Internet Explorer browser. The address bar shows <http://192.168.1.1/>. The browser's search bar contains "Google". The page title is "NetComm NB6PLUS4 ADSL2+ Router". The main navigation bar includes "Quick Start", "Status", "Advanced", and "Management". The "Advanced" tab is selected. On the left, the "Local Network" menu is expanded, showing "Internet" as the selected option. The "Internet" menu is further expanded, showing "Connections", "DNS Server", "IGMP Proxy", "DSL", "IP Routing", "Virtual Server", "NAT ALG", "Firewall", "Quality of Service", and "Port Mapping". The "Connections" option is selected. The main content area is titled "Internet Connection Configuration" and contains the following text: "Choose Add or Edit to configure Internet connection. Choose Finish to apply the changes and reboot the system." Below this text is a table with the following data:

PVC Name	VPI/VCI	Category	Protocol	NAT	QoS	WAN IP Address	MTU	Edit
pppoe_8_35_1 Connect	8/35	UBR	PPPoE LLC/SNAP	On	On	Auto assigned	1492	 

Below the table, the following text is displayed: "The Internet connection is NOT active if PVC name is marked with (?). You need to click "Finish" to apply the changes and reboot the system for activating this PVC." At the bottom of the main content area are two buttons: "Add" and "Finish". The status bar at the bottom of the browser shows "Internet | Protected Mode: On" and a zoom level of "100%".

6. Press the Add button.

7. Enter **VPI: 0**, **VCI: 35** with **Service Category: UBR Without PCR**.

NetComm 11n Wireless ADSL2+ Router - Windows Internet Explorer

http://192.168.1.1/

File Edit View Favorites Tools Help

NetComm 11n Wireless ADSL2+ Router

NetComm

Quick Start | Status | **Advanced** | Wireless | Management

Language: English

**Local Network**

**Internet**

Connections

DNS Server

IGMP Proxy

NAT Type

DSL

IP Routing

Virtual Server

NAT ALG

Firewall

Quality of Service

Port Mapping

Firmware: 3.104d  
ADSL2+: A2pB025c.d20h  
Wireless: 4.174.64.12

**Configure Internet Connection -- ATM PVC**

Please enter VPI and VCI numbers for the Internet connection which is provided by your ISP.

VPI:  (0-255)

VCI:  (32-65535)

Service Category:

< Back   Next >

Done

Internet | Protected Mode: On

100%

8. Press the Next button.

9. Set the connection type as **Bridging** with **Encapsulation type** as LLC/Snap Bridging.

NetComm 11n Wireless ADSL2+ Router - Windows Internet Explorer

http://192.168.1.1/

File Edit View Favorites Tools Help

NetComm 11n Wireless ADSL2+ Router

NetComm Quick Start Status Advanced Wireless Management

Language: English

**Local Network**

**Internet**

Connections

DNS Server

IGMP Proxy

NAT Type

DSL

IP Routing

Virtual Server

NAT ALG

Firewall

Quality of Service

Port Mapping

Firmware: 3.104d  
ADSL2+: A2pB025c.d20h  
Wireless: 4.174.64.12

**Configure Internet Connection - Connection Type**

Select the protocol and encapsulation type with the ATM PVC that your ISP has instructed you to use.

Protocol:

☐ PPP over ATM (PPPoA)

☐ PPP over Ethernet (PPPoE)

☐ IP over ATM (IPoA)

☒ Bridging

Encapsulation Type: LLC/SNAP

☒ Enable QoS

Enabling IP QoS for a PVC can improve performance for selected classes of applications. Please assign the priorities for various applications from the [Advanced...Quality of Service](#) menu. Be aware that IP QoS also consumes system resources, the number of created PVCs will be reduced consequently.

☐ Enable 802.1Q VLAN Tagging

< Back Next >

Internet | Protected Mode: On 100%

10. Enabling Quality of service (QoS) and 802.1Q VLAN Tagging are both optional.

11. Press the Next button.

- Set the WAN interface as the default **None** unless directed otherwise by your Internet Service Provider.

NetComm 11n Wireless ADSL2+ Router - Windows Internet Explorer

http://192.168.1.1/

File Edit View Favorites Tools Help

NetComm 11n Wireless ADSL2+ Router

NetComm Quick Start Status Advanced Wireless Management

Language: English

**Local Network**

**Internet**

Connections

DNS Server

IGMP Proxy

NAT Type

DSL

IP Routing

Virtual Server

NAT ALG

Firewall

Quality of Service

Port Mapping

Firmware: 3.104d  
ADSL2+: A2pB025c.d20h  
Wireless: 4.174.64.12

**Configure Internet Connection - WAN IP Settings**

Enter information provided to you by your ISP to configure the WAN IP settings.

☒ None

☐ Obtain an IP address automatically

☐ Use the following IP address:

WAN IP Address:

WAN Subnet Mask:

Default Gateway:

< Back Next >

Done Internet | Protected Mode: On 100%

- Press the Next button.

14. Check the **"Enable this Internet Connection"** option.
15. The connection name will be **br\_0\_35**, but you have the option of changing it in the Connection Name field.

NetComm 11n Wireless ADSL2+ Router - Windows Internet Explorer

http://192.168.1.1/

File Edit View Favorites Tools Help

NetComm 11n Wireless ADSL2+ Router

NetComm

Quick Start | Status | **Advanced** | Wireless | Management

Language: English

**Local Network**

**Internet**

Connections

DNS Server

IGMP Proxy

NAT Type

DSL

IP Routing

Virtual Server

NAT ALG

Firewall

Quality of Service

Port Mapping

Firmware: 3.104d  
ADSL2+: A2pB025c.d20h  
Wireless: 4.174.64.12

**This Internet Connection -- Summary**

Make sure that the settings below match the settings provided by your ISP.

☒ Enable this Internet Connection

Connection Name:

**Internet (WAN) Configuration:**

VPI / VCI	0 / 35
Service Category	UBR
Connection Type	Bridge LLC/SNAP, QoS Off

Click "Apply" to accept these settings.  
Click "Back" to make any modifications.

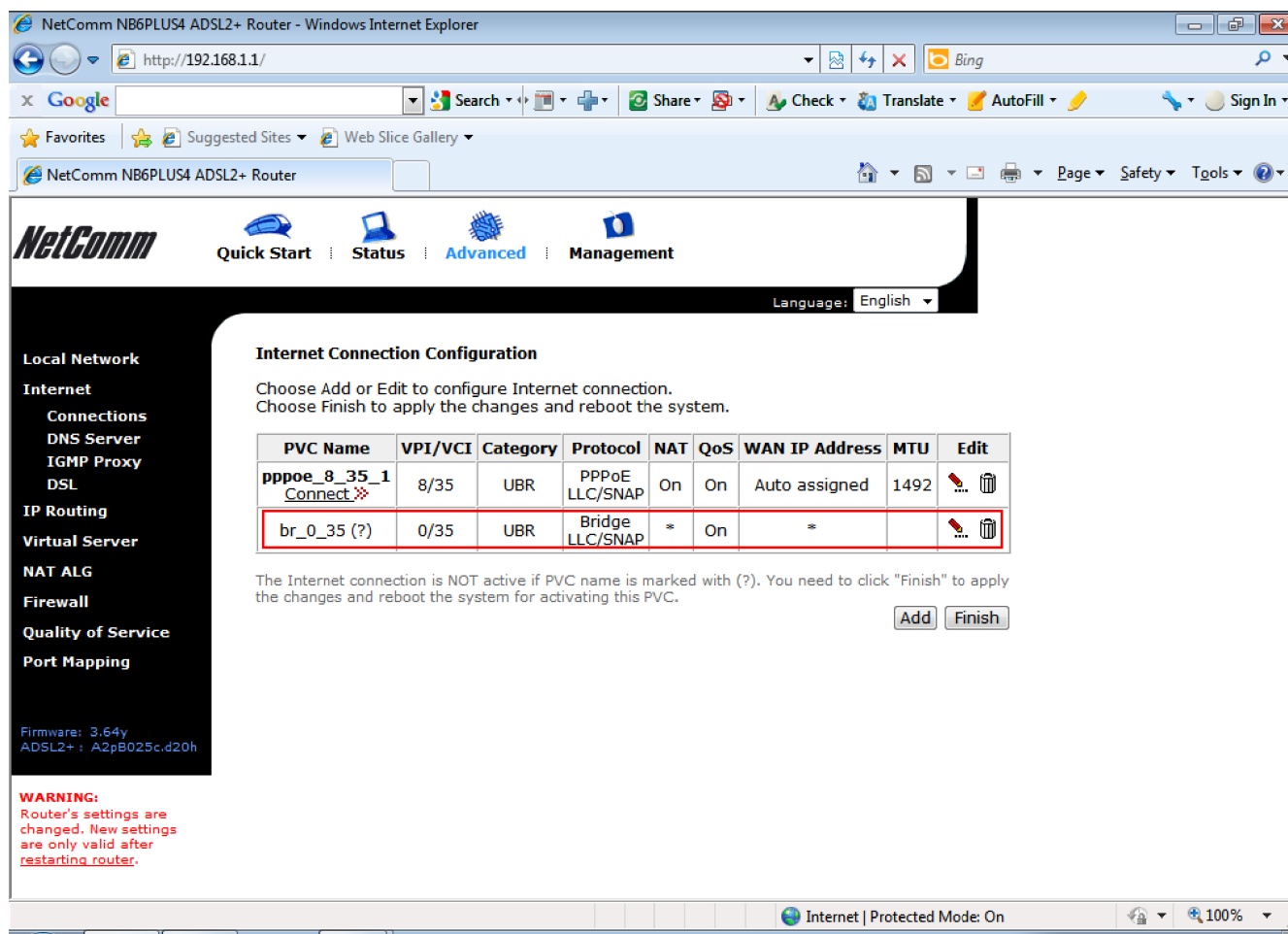
< Back Apply

Done Internet | Protected Mode: On 100%

16. Press Apply.



17. The Advanced > Internet > Connection screen will now show the new Configuration. Note the question mark in the PVC Name, indicating the settings will not become active until the Finish button is selected and the router is restarted.



NetComm NB6PLUS4 ADSL2+ Router - Windows Internet Explorer





http://192.168.1.1/

NetComm NB6PLUS4 ADSL2+ Router

Language: English

**Internet Connection Configuration**

Choose Add or Edit to configure Internet connection.  
Choose Finish to apply the changes and reboot the system.

PVC Name	VPI/VCI	Category	Protocol	NAT	QoS	WAN IP Address	MTU	Edit
pppoe_8_35_1 Connect	8/35	UBR	PPPoE LLC/SNAP	On	On	Auto assigned	1492	 
br_0_35 (?)	0/35	UBR	Bridge LLC/SNAP	*	On	*		 

The Internet connection is NOT active if PVC name is marked with (?). You need to click "Finish" to apply the changes and reboot the system.

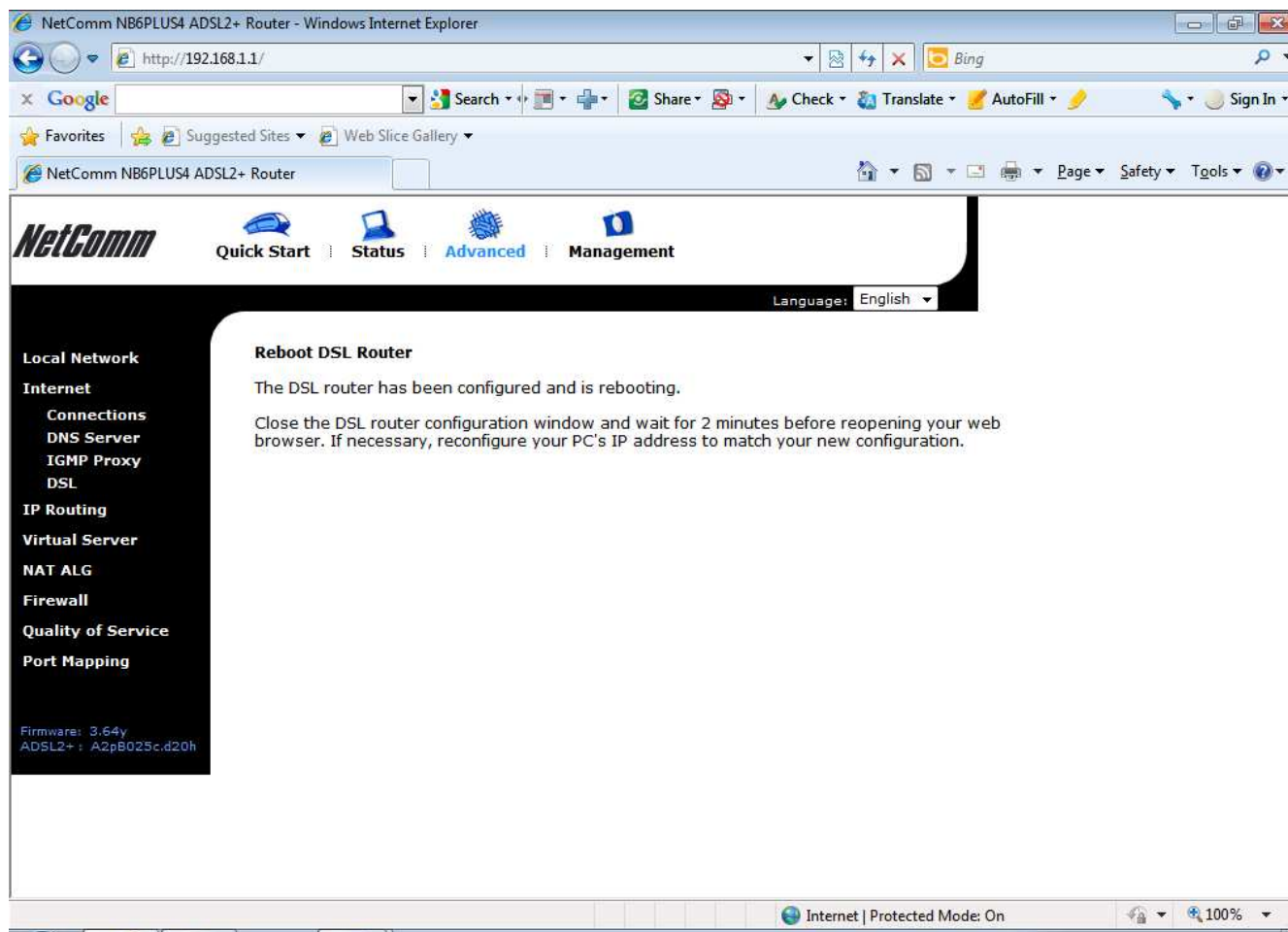
**WARNING:**  
Router's settings are changed. New settings are only valid after restarting router.

Firmware: 3.64y  
ADSL2+: A2pB025c.d20h

Internet | Protected Mode: On

18. Press the Finish button.

19. You will see the following screenshot while the router reboots.



20. The completed Internet Connection Configuration screenshot with the IPTV settings are displayed below.

The screenshot shows the NetComm NB6PLUS4 ADSL2+ Router web interface. The browser window is titled "NetComm NB6PLUS4 ADSL2+ Router - Windows Internet Explorer" and the address bar shows "http://192.168.1.1/main.html". The interface has a navigation menu on the left with options like "Local Network", "Internet", "Connections", "DNS Server", "IGMP Proxy", "DSL", "IP Routing", "Virtual Server", "NAT ALG", "Firewall", "Quality of Service", and "Port Mapping". The "Internet" section is selected, and the "Internet Connection Configuration" page is displayed. The page contains a table of PVC configurations and instructions for activating the connection.

PVC Name	VPI/VCI	Category	Protocol	NAT	QoS	WAN IP Address	MTU	Edit
pppoe_8_35_1 Connect	8/35	UBR	PPPoE LLC/SNAP	On	On	Auto assigned	1492	[Edit] [Delete]
br_0_35	0/35	UBR	Bridge LLC/SNAP	*	On	*		[Edit] [Delete]

The Internet connection is NOT active if PVC name is marked with (?). You need to click "Finish" to apply the changes and reboot the system for activating this PVC.

[Add] [Finish]

Your NB6Plus4W Rev1 / Rta1025W Rev1 has now been successfully configured for IPTV service.