



# NetCommWireless

## Performing a Factory Reset

(NF5)

## **About Factory Resets**

A factory reset on a router returns all settings to default settings as the router was when leaving the factory floor. It is particularly important to perform a factory reset after upgrading the router firmware to ensure the firmware installation is completed correctly.

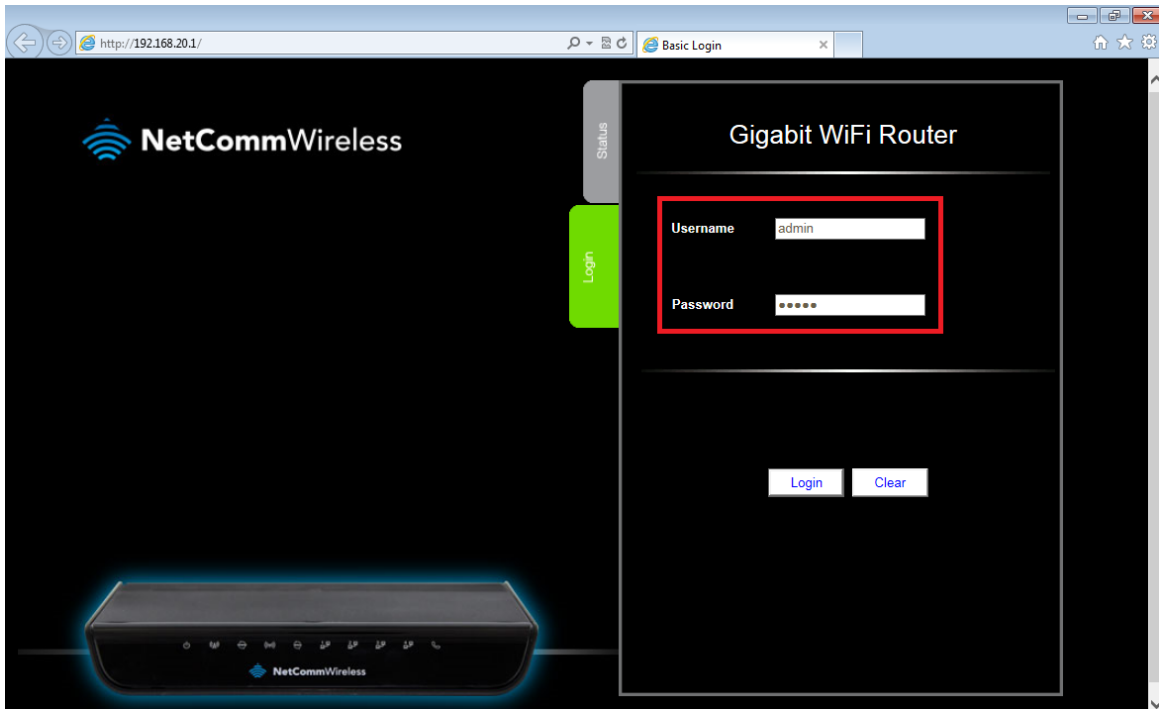
There are two methods that can be used to perform a successful factory reset:

1. Using the router's graphical user interface (GUI) to complete a factory reset.
2. Performing a factory reset manually using the reset button at the back of the router.

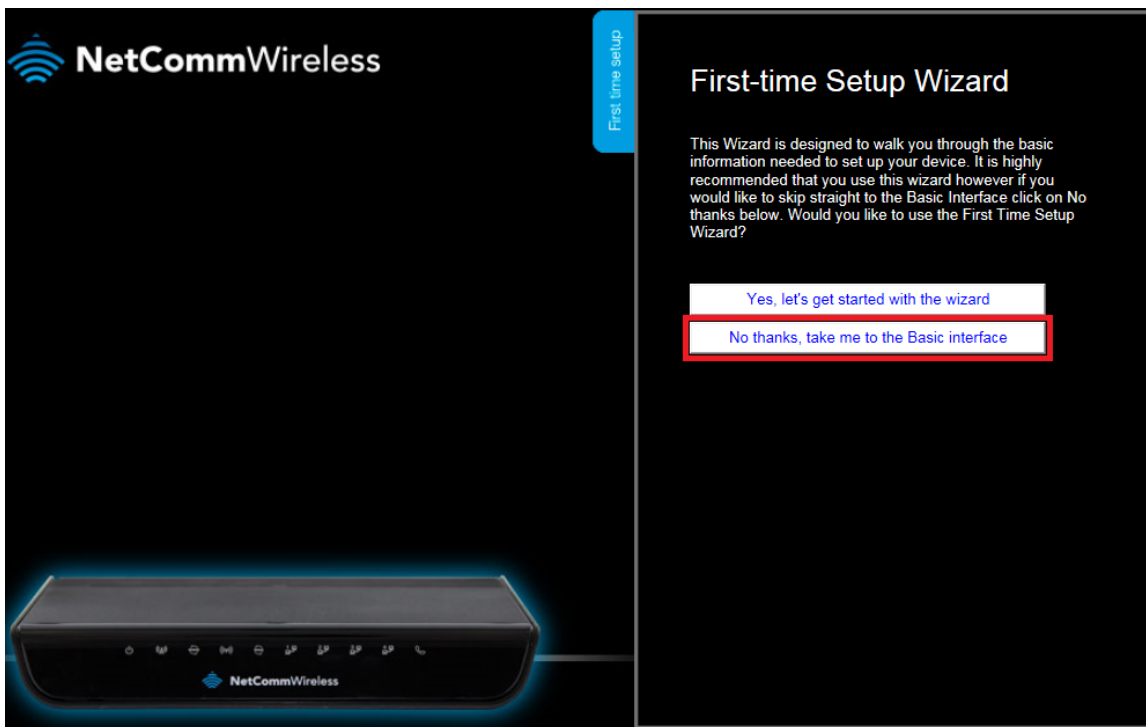
This guide will explain both methods to complete a successful factory reset.

## **Performing a Factory Reset via the Router GUI Interface**

1. Navigate to <http://192.168.20.1> in a web browser using “admin” (without quotation marks) as both the username and password to login to the router.



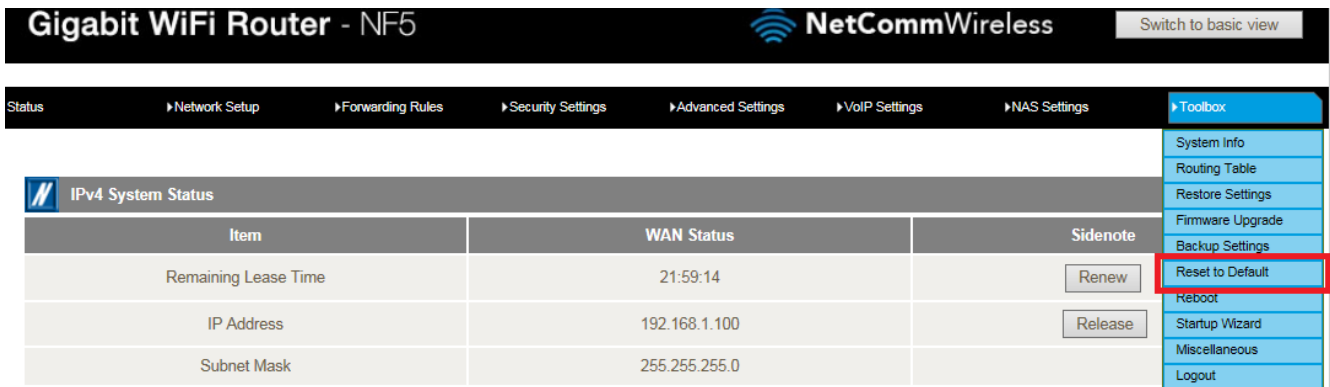
2. If you have been asked for First Time Setup Wizard , choose “No Thanks, take me to the Basic Interface.”



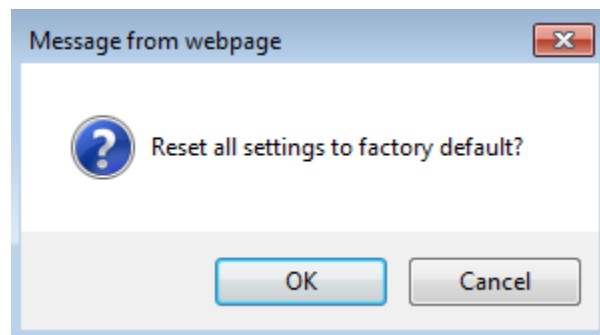
3. Select the **"Switch to Advanced View"** option from near the bottom of the screen.



4. Click **Reset to Default** from the **Toolbox** menu.



5. Click the **OK** button.



## **Performing a Factory Reset Manually**



1. Ensure the NF5 is powered on.
2. Press and hold the reset button at the back of the router for 10-15 seconds. During this time the router lights will flicker in a pattern to show the reset is underway.
3. After holding in the reset button for 10-15 seconds, release the button and check that the router lights return to their normal pattern. If this does not happen, disconnect the power supply cable for 30 seconds and then reconnect it.