

## Information

- Product Code: IAC3000
- Firmware Version: 2.10.00
- Build No: 01500
- Beta/Official: Official
- Filename: NetComm\_IAC3000\_2.10.00\_01500.rom
- File size: 13.4MB
- Date: 24 Feb 2010

## Upgrade Instructions

Please refer to the following instruction for IAC3000 device firmware upgrade via its HTTP/HTTPS management interface:

**Step 1:** Connect an Ethernet cable to one of the LAN port of the IAC3000. Open the IAC3000 web management interface by using the following login details

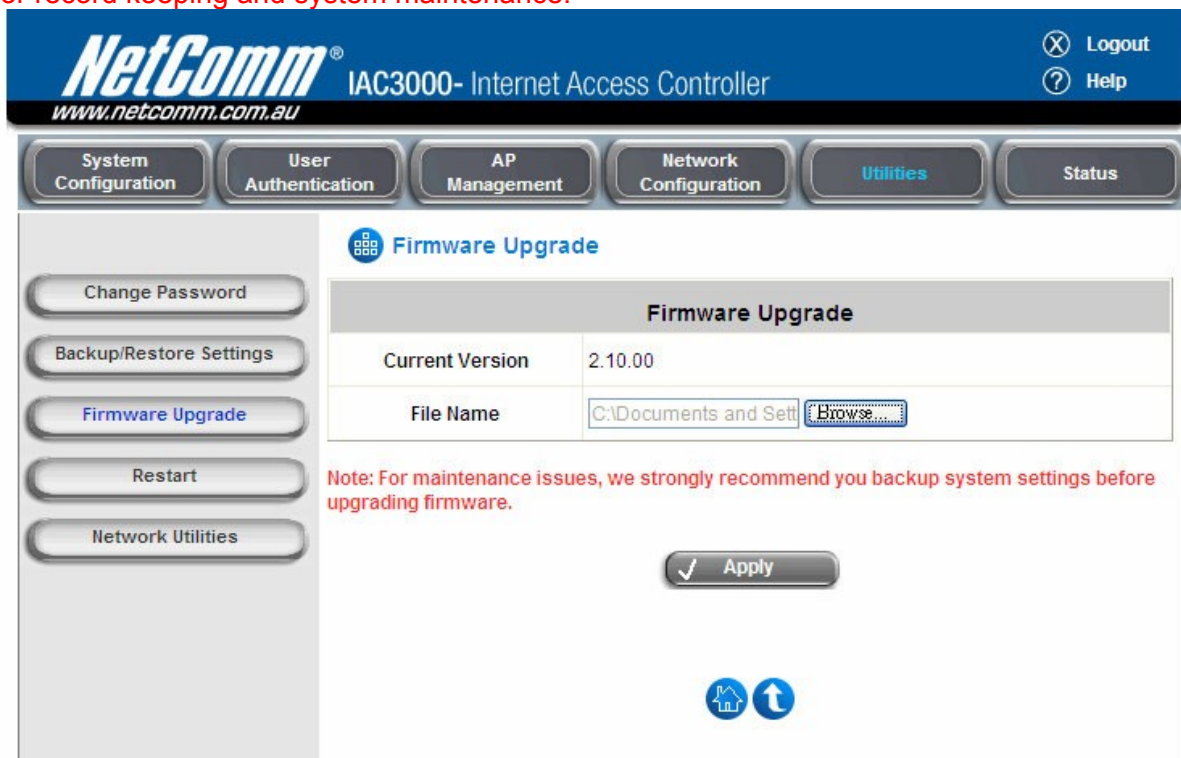
Default LAN Mgt IP address: <http://192.168.30.1>

Default admin user name: admin

Default admin Password: admin

**Step 2:** Once you are at the IAC3000 web management interface, navigate to **Utilities > Firmware Upgrade** > browse for the IAC3000 firmware file: [NetComm\\_IAC3000\\_2.10.00\\_01500.rom](#) then click on **Apply**. (Refer to screenshot below)

**Note:** It is strongly recommended that you back up system setting before firmware upgrade for record keeping and system maintenance.



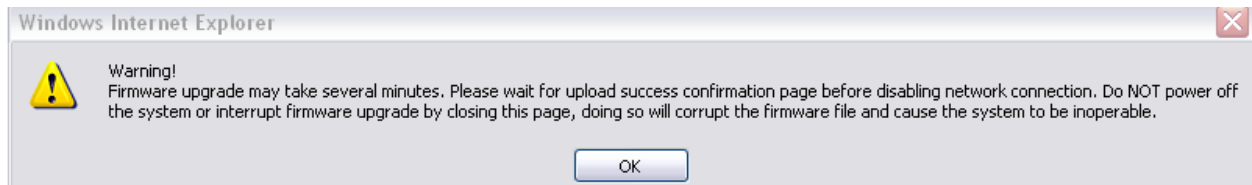
The screenshot shows the NetComm IAC3000 web management interface. The top header includes the NetComm logo, the text "IAC3000- Internet Access Controller", and links for "Logout" and "Help". Below the header is a navigation bar with buttons for "System Configuration", "User Authentication", "AP Management", "Network Configuration", "Utilities" (highlighted), and "Status".

The main content area is titled "Firmware Upgrade". On the left side, there is a sidebar with buttons for "Change Password", "Backup/Restore Settings", "Firmware Upgrade" (highlighted), "Restart", and "Network Utilities".

The "Firmware Upgrade" section contains a table with the following data:

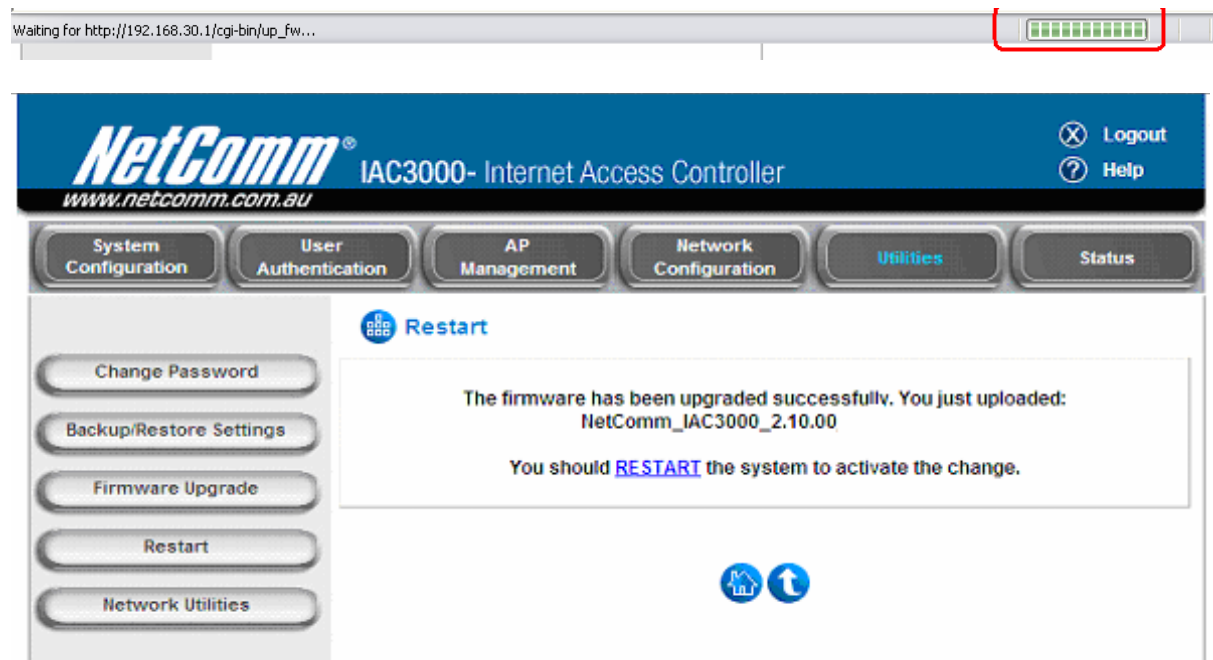
Firmware Upgrade	
Current Version	2.10.00
File Name	C:\Documents and Settings\ [User] \ [Folder] \ [File Name] .rom

Below the table, there is a note: "Note: For maintenance issues, we strongly recommend you backup system settings before upgrading firmware." At the bottom of the section, there is an "Apply" button with a checkmark icon.

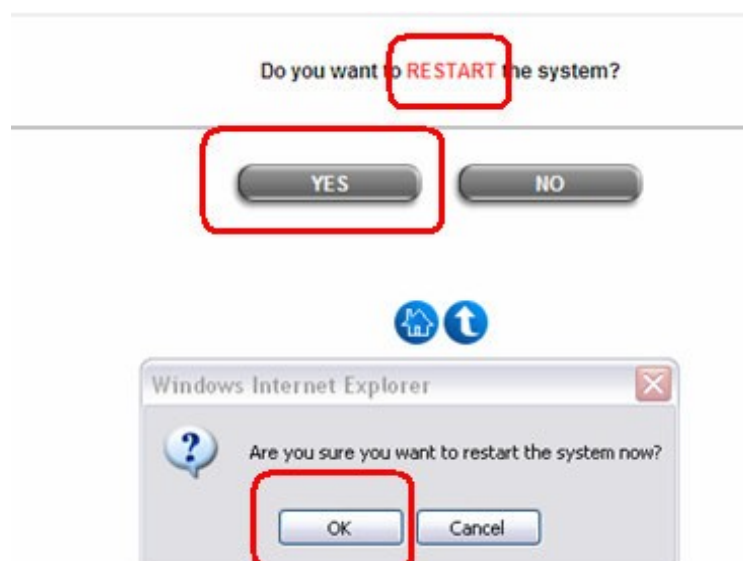


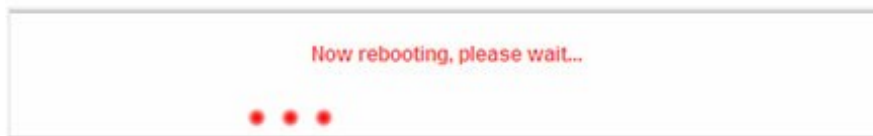
The LED light of the connected Ethernet port will now flash rapidly as the firmware is being transferred to the IAC3000.

**Step 3:** Please note that IAC3000 firmware upgrade will take approx 3 to 4 minutes, please wait for the firmware upgrade status bar to complete and wait for the following upgrade-success message to appear and ask for system 'Restart'.



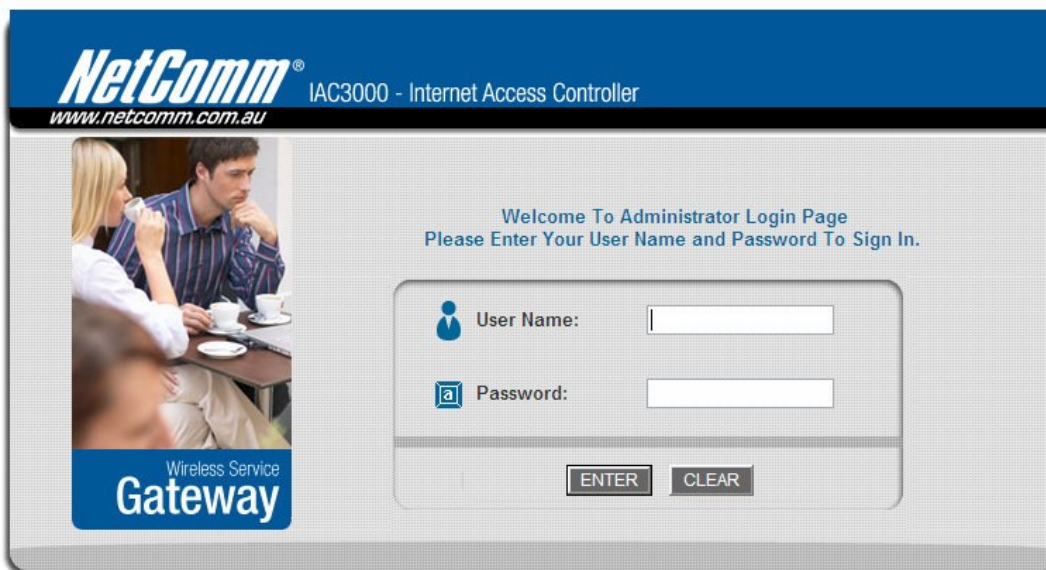
**Step 4:** Click on 'RESTART' in the page presented above and 'OK' to restart the IAC3000 after successful firmware upgrade.





**Step 5:** System will now restart, it will take approx 2 minutes to complete. The 'status' LED light on the IAC3000 physical panel will be flashing indicated that the system is still busy booting up. Please do not ping the system as it is busy booting up.

**Step 6:** Once the system finished booting up, the 'status' LED at the physical panel will be on *solid green* and the IAC3000 management login page will appear as follows:



IAC3000 firmware upgrade is now completed.

**Note:** Please note that centrally manage the NetComm NP725 and NP726 indoor and outdoor AP and the In-Wall wireless access point NP727 by the IAC3000, the following firmware should be used together.

IAC3000: FW 2.10.00\_01500 (or later)

NP725: FW 1.10.00 (or later)

NP726: FW 1.70.00 (or later)

NP727: FW 1.00.00 (or later)

## New Features

### 2.10.00\_01500

1. Add managed AP model: support NetComm NP727 for centralized AP management

### 2.00.01\_01000

2. Add VLAN Port Location mapping support in Web GUI
3. Add NetRetriever PMS integration support in Web GUI

4. Add managed AP model: support NetComm NP726 for centralized AP management
5. Add AP load balancing
6. Add Rogue AP detection
7. PLM Default "Continue" UI page update
8. PLM Default "Free" login page update
9. Monetary unit conversion in NR Posting message (dollar->cent)
10. Change factory default setting: The IPPnP setting is set to 'Enabled' by default
11. Change factory default setting: The NTP setting in the IAC3000 uses AUS time server in entry 1 by default.
12. PLM Free & Charge user login page UI enhancement
13. PLM Free & Charge user login template page background image and font type and size enhancement

#### Bug Fixes / Modifications

##### **2.10.00\_01500**

1. Make default policy = 'None' appear in SZ page instead of 'Policy 1'
2. Fix Firefox browser issue when setting port location mapping VLANs.

##### **2.00.01\_01000**

1. Secure Pay Response '08 Approved' issue fixed. The complete set of approved codes as described in the document of Secure Pay response codes is now supported for payment transactions.

#### Known Issue

**Warning:** IAC3000 device configuration file from previous firmware version 1.00.00\_00400 cannot be restored to IAC3000 running firmware version 2.10.00\_01500.