



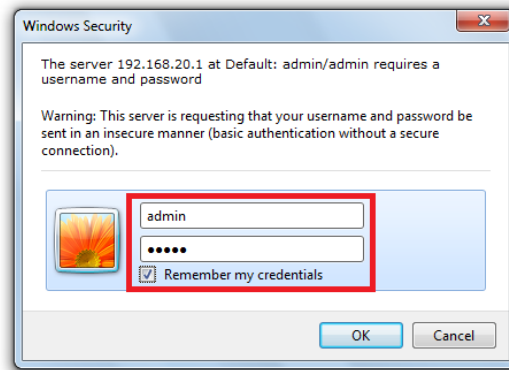
NetCommWireless

Wireless Repeater Setup

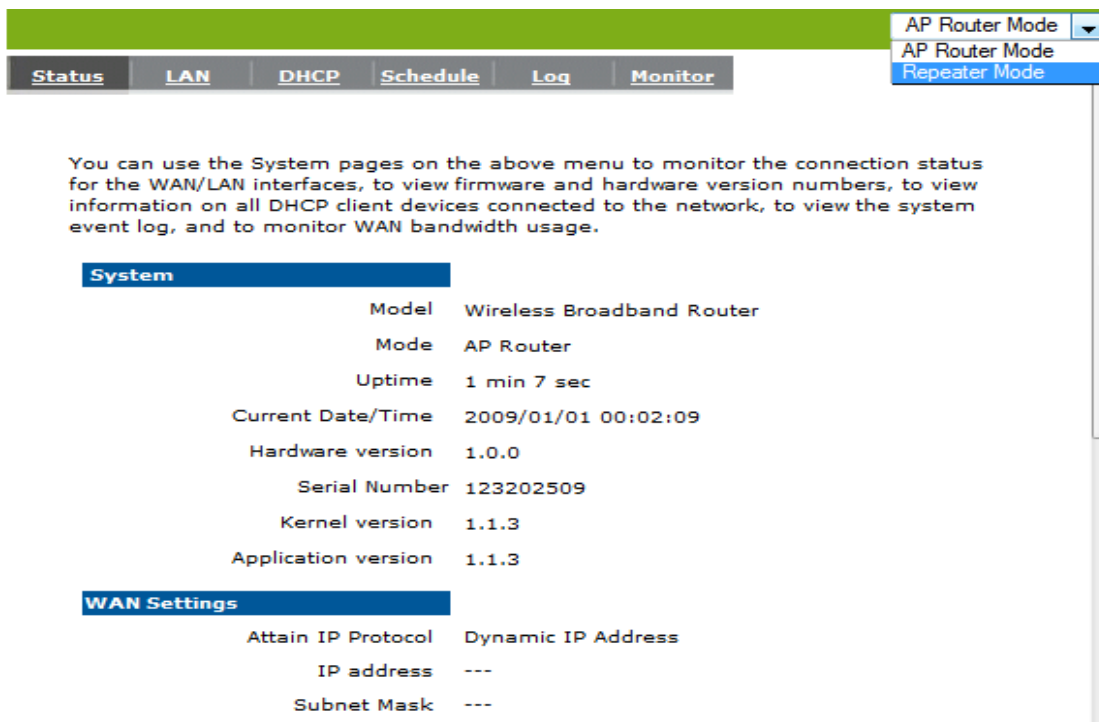
(NP803n and NP804n)

NP803n Wireless Repeater Setup guide

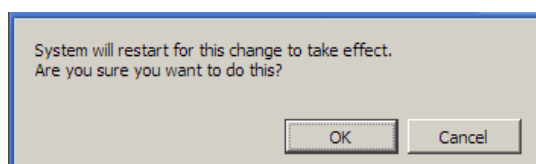
1. Navigate to <http://192.168.20.1> in a web browser.



2. Enter **admin** for both username and password when prompted then click **OK**.
3. Change the operation mode of the NP803n to **Repeater Mode** from top menu as shown in the screen shot below.



4. Click **OK** when prompted to reboot the router.



- Once the router is back on, click on **Wireless** on the left-hand side menu and then from the top menu click on **Basic**.

NetComm®
www.netcomm.com.au
Velocity Series

System
Wizard
Wireless
Tools

Repeater Mode

Basic Filter Client List

Basic wireless settings can be configured on the page below.

Radio : Enable Disable

Mode : Repeater

Band : 2.4 GHz (B+G+N)

Enable SSID#: 1

SSID1 : wireless repeater

Site Survey : Site Survey

Mozilla Firefox
http://192.168.20.1/wlsitesurvey.htm

Site Survey

NO.	Select	Channel	SSID	BSSID	Encryption	Auth	Signal
1	<input checked="" type="radio"/>	1	wireless repeater	00:60:64:32:15:10	AES	WPA2PSK	
2	<input type="radio"/>	4	cave2	00:23:CD:1B:E3:76	TKIPAES	WPA1PSKWPA2PSK	
3	<input type="radio"/>	6	NetComm Wireless	00:60:64:2F:C8:48	TKIP	WPAPSK	
4	<input type="radio"/>	6	RTA1025W-A2545E	B4:74:9F:A2:54:5F	NONE	OPEN	
5	<input type="radio"/>	11	Default 2	00:60:64:2C:C0:E0	TKIP	WPAPSK	

Refresh Connect

- Click on **Site survey** button and then you will see a list of available wireless access points and you need to select the SSID for the access point you have configured and then click **connect**.
- Once you have press **connect** you need to type the **pre-shared key** for your access point and then click **Apply**.

This page allows you configure wireless security settings. It is highly recommended that Encryption is enabled to help prevent unauthorized access to the wireless network.

Site Survey Settings

Network Name (SSID) : Default 2

Encryption : WPA pre-shared key

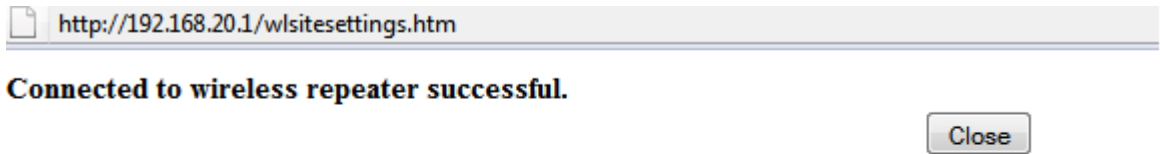
WPA type : WPA(TKIP) WPA2(AES)

Pre-shared Key type : Passphrase

Pre-shared Key : xxxxxxxxxxxxxxxxxxxx

Apply

8. If the pre-shared key is correct, it will say "Connected to wireless repeater successfully."



9. Once you close the page, Wireless > Basic Page will show currently connected Access points.

