



WLAN Cardbus Adaptor Quick Setup Guide

WLG25CARDBUS



This Quick Set-Up Guide provides you with the basic instructions for setting up the wireless adaptor on your computer. The complete User Manual that includes an illustrated step-by-step guide can be found on the provided CD.

1 *Introduction*

A Wireless Local Area Network (WLAN) serves the same purposes as a conventional wired Ethernet network (LAN) but only without the wires. Computers are linked together by radio waves. The wireless adaptor is your “wireless network card”. It turns your computer into a wireless station, allowing it to connect to other wireless stations or wireless access points to share network resources including Internet access.

THIS PRODUCT CAN BE SET UP ON TWO TYPES OF WIRELESS NETWORKS

1. **Infrastructure network**

In an infrastructure network, your wireless adaptor connects your computer to a wired network via a wireless access point. This enables your computer to share all available resources including Internet access and peripherals on the wired network.

2. **Ad-hoc (peer to peer) network**

This is a computer network consists of wireless stations. Your wireless adaptor connects your computer to other wireless stations for file sharing.

WIRELESS PRIVACY

Privacy is an important issue with wireless. These functions are provided for access control and security:

1. **Service Set ID (SSID)**

SSID is the wireless network domain name. You must set your wireless adaptor to the SSID of the wireless network you wish to join. This is similar to a network login name. Certain access points provide basic protection by hiding the SSID. You are expected to enter the correct SSID before joining the network.

2. **Wired Equivalent Privacy (WEP)** is an authentication algorithm that protects users from eavesdropping. When enabled, all wireless stations transmit data encrypted using a predetermined key. The receiving station will use the same key for decryption. It is recommended that WEP is only used for backward compatibility with legacy equipment.

3. **Advanced security WPA (Wi-Fi Protected Access) and 802.1x**

These are more robust security mechanisms than WEP. Both WPA and 802.1x require a separate RADIUS server for authentication. But home users generally do not have access to RADIUS servers. A “special home mode” of WPA known as WPA-PSK can be used. This allows users to manually enter a password, known as Pre-Shared Key or PSK to connect.

Two encryption systems are available with WPA-PSK. The TKIP (Temporal Key Integrity Protocol) is an enhanced version of WEP. The encryption key is changed for every packet. Compared with WEP, TKIP makes it very difficult for hackers to decrypt messages. Another system, AES (Advanced Encryption Standard) was developed for the US Government. AES is seen by many as the best compromise among requirements for security, performance and flexibility.

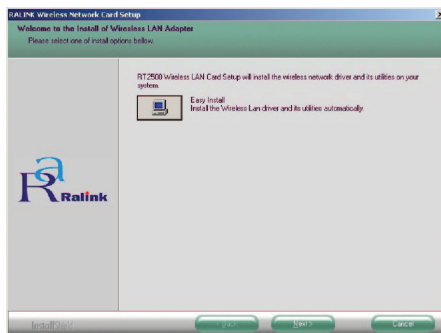
2 Installing the Wireless Adaptor

Before You Start:

- Do not insert the wireless adaptor into your computer before installing the supplied software. If you insert before installing the software, Windows would pop up a “Found New Hardware” message box, requesting search for a driver. Click **Cancel**, and remove the adaptor to proceed.
- If you have installed the Wireless Adaptor driver & utility before, please uninstall before reinstalling. Refer to Section 6.1 of this Guide.

INSTALL PROCEDURE FOR DRIVER AND WIRELESS CONFIGURATION UTILITY

1. Exit from all currently running programs.
2. If you are reading this Quick Set-Up Guide from the supplied CD, return to the previous menu and click the **Driver & Utility** button. Otherwise, load the supplied CD and go the WLG25CARDBUS product page and click the **Driver & Utility** button.
3. Double click on **RaLink2_RT2500.exe** to run the install wizard.
4. Click **Easy Install** to begin installing driver and utility.
5. When Setup has finished installing, click **Finish** to complete.
6. You will be asked to insert the wireless adaptor into the computer's PCMCIA slot.
7. Windows will detect new hardware and start to install the driver. Windows XP users – if installation pauses, click the **Continue Anyway** button to resume driver installation.



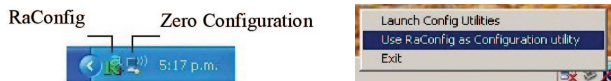
8. If asked to select your location country, click on the drop down box to select Australia or New Zealand.
9. Click Finish when the completion screen appears.
10. Depending on your operating system, Windows may ask to restart.

3 Connecting to a wireless network

3.1 WINDOWS XP USERS ONLY

Windows XP comes with a built in **Zero Configuration** Utility for wireless configuration and monitoring. You may use either the Vendor's RaConfig utility or the Windows XP default utility. **It is important to use only one utility.** The Vendor's RaConfig utility allows you to switch control between the two utilities. It is recommended that you use the Vendor's RaConfig utility.

By default the Windows XP Zero Configuration Utility is active. To use the Vendor's RaConfig utility, right click the RaConfig icon on taskbar, select **Use RaConfig as Configuration Utility**.



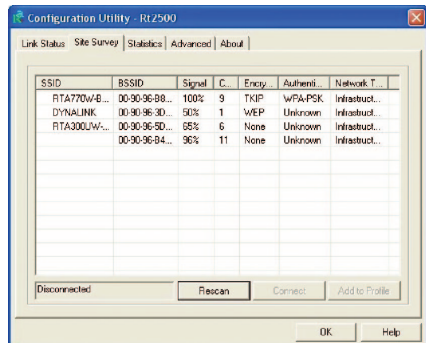
From this point on, you only need to use the vendor's utility. The icon of the Windows Zero Configuration Utility will remain on the taskbar.

3.2 FOR ALL USERS

1. From the Windows taskbar, double click on the Vendor's RaConfig Utility icon.
2. The screen starts with **Site Survey**. After the initial search, a list of available access points is shown.

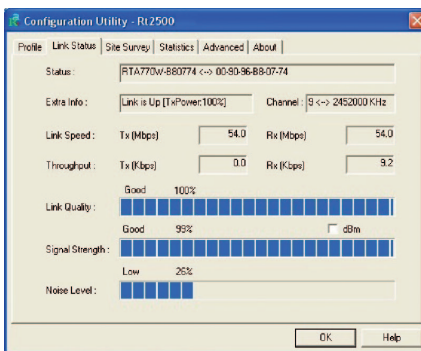
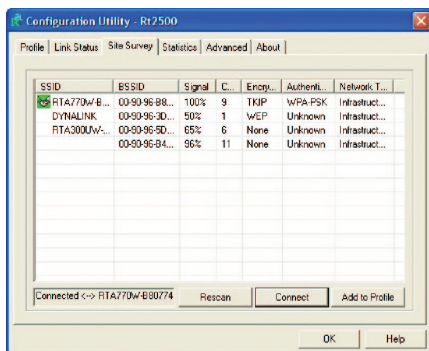
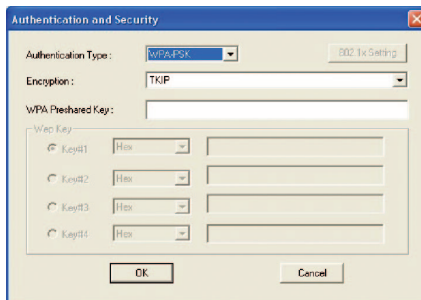
The first access point uses WPA-PSK authentication & TKIP encryption.
The second access point uses WEP.
The third access point does not use any form of encryption.
The last access point hides its SSID and uses no encryption.

Any of these may also use MAC address filtering for restricting access (refer to section 5).



WLAN Cardbus Adaptor Quick Set-up Guide

3. Highlight the access point you wish to join, click **Connect**.
4. If the network uses encryption, you will be asked to enter the key. Obtain the key from the system administrator and enter into the **WPA Preshared Key** box. Click **OK**.
5. The wireless adaptor will attempt to connect. If authentication has been successful, the **Site Survey** page shows **Connected** status, and the **Link Status** page starts reporting the link quality:



This confirms your computer has joined the wireless network.

If you wish, the parameters you entered can be saved to a profile. Click the **Add to Profile** button in the Site Survey page to store the parameters. Multiple profiles can be saved and modified at any time. If you want to join a network whose connection profile is already stored, select it from the **Profile** page and **Activate**. The wireless adaptor will automatically connect using the stored parameters.

3.3 ZERO CONFIGURATION UTILITY – WINDOWS XP ONLY

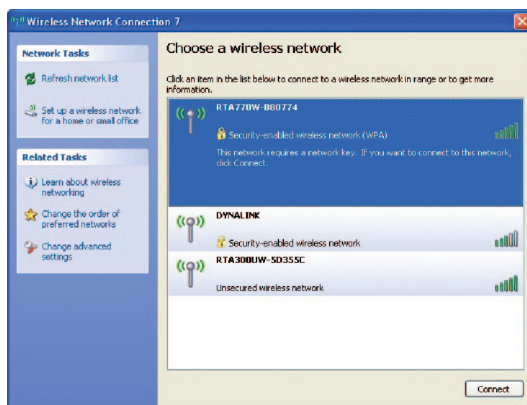
If you prefer using the Windows Zero Configuration Utility, check that the Vendor's utility is disabled. Right click the Vendor's utility icon on taskbar, select Use **RaConfig as Configuration Utility**.

Launch Config Utilities

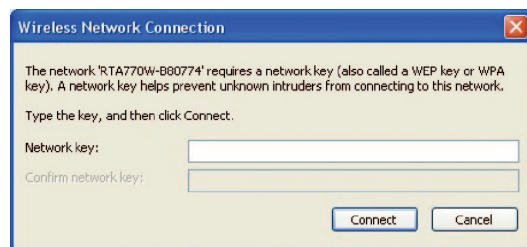
Use Zero Configuration as Configuration utility

Exit

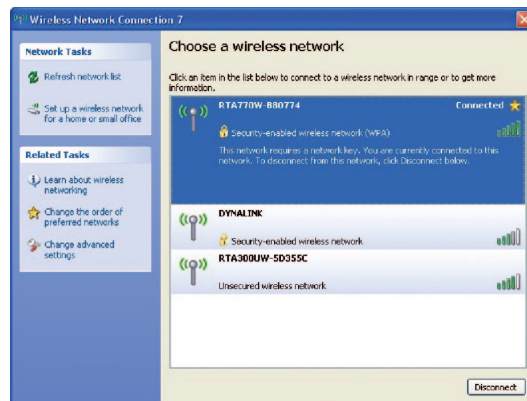
From this point on, you only need to use the Windows default utility. Double click the icon. Windows will scan and list all available access points. Caution - access points with hidden SSID are not shown.



Double click the access point you wish to join. If the network uses encryption, A network key is required. Obtain the key from the system administrator and enter into the box.



The wireless adaptor will attempt to connect. If authentication has been successful, Windows will confirm the **Connected status**:



4 Other network settings

4.1 WEP

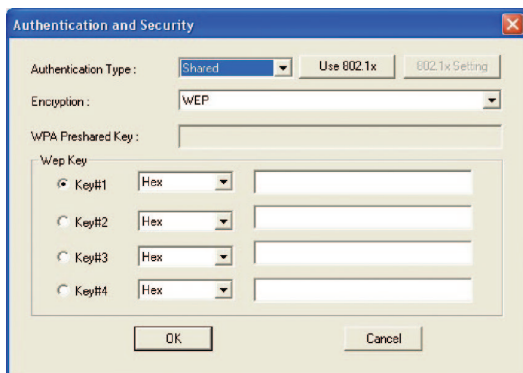
If the network you wish to join is WEP enabled, you will have to configure for WEP. The WEP setting is already determined on the network by the network administrator. Before you start you should have obtained:

1. The type of encryption, 64 or 128-bit.
2. The encryption keys.
3. The key number to be used.
4. Open or shared key authentication.

The settings must be identical to those entered into the access point.

From the **Site Survey** page of the RaConfig utility, highlight the access point you wish to joint and click **Connect**. You will be asked to enter the WEP key:

Click **OK** and the wireless adaptor will attempt to connect.



4.2 NETWORK WITH HIDDEN SSID

If the wireless network you wish to join does not broadcast its SSID, you will be asked to supply the SSID. If the SSID entered does not match the one in use, it is up to the access point to decline or accept the connection request.

5 Adding extra security by MAC address filtering

Some access points may use this option to provide an extra level of security. The MAC address, or the unique hardware ID of your wireless adaptor is pre-registered with the access point. If the network uses this function, you must supply the MAC address of your adaptor to the network administrator for inclusion into the access point. The MAC address of your adaptor is printed on a barcode label affixed to the product. Refer the Question 2 of the Troubleshooting section if you cannot locate the MAC address of your adaptor.

6 *Uninstalling the adaptor, driver and utility*

6.1 PERMANENT REMOVAL

The correct procedure is to uninstall the software first. You will then be advised to physically remove the adaptor.

To uninstall:

1. Close all programs that are currently running.
2. Click the Windows **Start** button, point to **All Programs > RaLink > RT2500** and select **Uninstall**.
3. Follow the on screen instructions to proceed with software removal.

6.2 TEMPORARY REMOVAL WITHOUT UNINSTALLING DRIVER AND SOFTWARE

It is recommended that you follow the standard Windows procedure for removing a device from your computer.

1. Double click the **Safely Remove Hardware** icon on taskbar.
2. Select the device you want to remove, click **Stop** and then **OK**.
3. Wait for the safe to remove message is displayed, click **OK** and remove device.

7 *Troubleshooting*

1. *Cannot connect to access point (infrastructure mode) or other wireless stations (ad-hoc mode)*

- Check that the correct install procedure was followed and the wireless utility displays the network you wish to join.
- Make sure the adaptor and access points/wireless stations are using the same SSID.
- If MAC address filtering (section 5) is enabled at the access point, contact the network administrator to include your adaptor's MAC address into the list of authorised clients.
- If encryption is used, make sure the encryption parameters entered match the access point. Contact the network administrator if you are unsure.
- Restart computer.

2. *How to find the MAC address of my adaptor*

- The MAC address of your adaptor can be read off from a barcode label affixed on the product.

- If the adaptor is already installed, click **Start > Run**. Enter **cmd** and click **OK**. In the DOS window, type in **ipconfig /all**. Under **Ethernet Adapter Wireless Network Connection**, the MAC address is displayed as **physical address** in a group of 6 double digits.
- For Windows 98 or ME, click **Start > Run**, type in **winipcfg** and then **OK**. Select the wireless adaptor. Read off the MAC address from **Adapter Address**.

3. *Poor Link Quality*

If the link quality is poor, it may be due to one of these reasons:

- Radio interference.
- Distance between adaptor and access point/wireless station is too far.

There are usually 13 channels available to use. In infrastructure mode, the access point selects the channel used for communications. In adhoc mode, the users can agree on picking a different channel to avoid radio interference.

4. *How to avoid radio interference*

Other wireless devices and appliances on site may share the same 2.4 GHz band. If undesirable effects are observed, try using a different channel if possible. Also try the following:

- Move the computer to a different location or orientation. If adaptor is USB, move the adaptor instead of computer.
- If the radio interference source is known, increase the separation between the computer and the device causing the interference.
- Do not share the same AC power socket between the computer and the device generating the interference.
- Stay away from microwave sources (including microwave oven) and large metal objects.

Warranty



Dynalink warrants this product against defects in materials and workmanship for a period of twelve months from the original date of purchase. We will, at our discretion, repair or replace the faulty unit, free of charge, provided it is returned to us with proof of purchase from an authorised dealer within the warranty period. Return delivery after repair will be paid for by Dynalink. We reserve the right not to repair or replace goods that:

- ⊕ have been mishandled, abused or not installed according to the guidelines as outlined in the instructions.
- ⊕ have been subjected to a power surge from other equipment or other external factors.
- ⊕ have been altered or modified.

Help



Always check that your hardware is installed correctly. Check our web site for the latest information and troubleshooting guide. If you have difficulties, contact Dynalink Technical Support for issues relating to installation and operation.

If possible, visit Dynalink's on-line support area at:

New Zealand www.dynalink.co.nz/support

Australia www.dynalink.com.au/support



Contact Dynalink's Technical Support:

New Zealand

Phone 0800 653 962

Fax 0800 503 962

(Monday-Friday: 8:30am-7:30pm)

Australia

Phone 1800 653 962

Fax 1800 063 962

(Monday-Friday: 8:30am-5:30pm)

