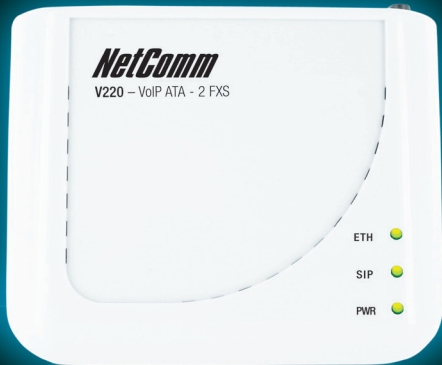
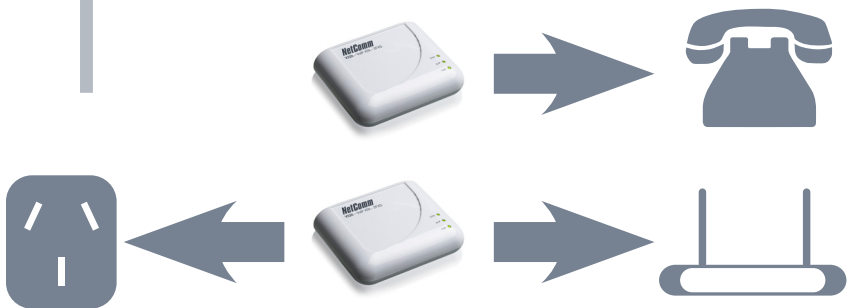


# *NetComm*® NETCOMM EXPRESS™ SERIES Dual Port VoIP Adapter



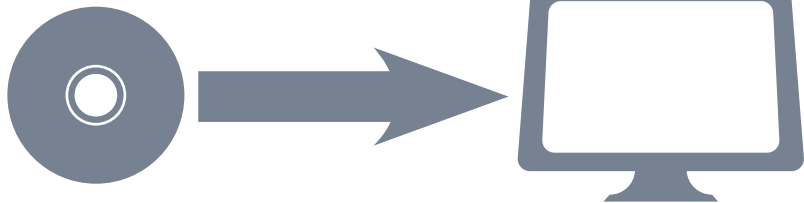
# 1

## Hardware Installation



1. With the supplied Ethernet cable, connect the **LAN** port of your modem/router to the **WAN** port on the back of your VoIP ATA
2. If you would like your PC to be connected to the network through your VoIP ATA connect another Ethernet cable (not supplied) from your PC to the **LAN** port on the back of your VoIP ATA.
3. Connect your telephone handset to the **Phone** port. You can connect an additional handset to the **Phone 2** port.
5. Connect the supplied power adapter and press the power button to turn your ATA on. After 2 minutes the **Power** and **Ethernet** LEDs will be lit.

# 2 Software Configuration



1. Insert the supplied CD into your PC. The CD should auto-run
2. The default Internet access is DHCP Client Mode. Click on **WAN Configuration** to change the Internet access type.
3. Enter the SIP Proxy Domain, Proxy Server, Outbound Proxy, Username, Auth. ID and Auth. Password that are provided by your VSP
4. Click on **Setup** and the VoIP ATA will start to configure. Follow the prompts to complete the configuration.
5. After a few minutes the VoIP ATA should report that the setup has been successful

# 3 Troubleshooting

## Cannot establish a connection

- You can use the web interface for more advanced setup options
- Open a web browser (e.g. Internet Explorer, Safari) and type **192.168.22.1** into the address bar and press **Enter**
- Enter the default username and password which is **admin** for both

- Under the **Configuration** tab on the left hand menu, select **WAN** for advanced Internet settings
- Under the **Configuration** tab on the left hand menu, select **VoIP** and click on **SIP Service Provider** for advanced VoIP settings
- Click on **Save Settings/Reboot** to use the newly entered settings

# 4

## NetComm Microfilter™ Series ADSL2+ Splitter-Filter-EM1550



Stops your ADSL signal from interfering with telephones and fax machines

- Designed to get the best from your ADSL2+ Internet connection
- Telstra Approved
- Splitter and filter in 1. Connect your telephone/fax and ADSL modem to a single telephone wall socket