



Wireless Security Guide

(for Windows XP, Windows Vista, Windows 7, Mac OSx)

Wireless Security Guide

This guide will take you through the process of configuring, changing or checking the wireless security settings on an existing wireless network.

This guide **will not** assist you to setup a new wireless network. Please refer to the wireless setup document for your model available from the support section of the [NetComm](#)* or [Dynalink](#)** website.



Any changes to your wireless security settings will require you to reconfigure wirelessly connected devices to use the new security settings. Please ensure that you have your wireless setup guide handy for this.

* NetComm Support - <http://www.netcomm.com.au/support>

** Dynalink Support - <http://www.dynalink.co.nz/cms/index.php?page=how-to>

Step 1: Selecting a wireless security type:

There are a number of different types of wireless security to select from.

Before changing your settings, check the types of security available on your modem/router and then consult your wireless adapter manufacturer to ensure your wireless adapter is compatible with your chosen security type.

The most commonly used security types are:

- WEP (64bit or 128bit)
- WPA (Radius)
- WPA-PSK
- WPA2 (Radius)
- WPA2-PSK

The majority of wireless adapters should support one (or all) of the above security types.



You will be unable to utilise Radius server authentication without having a Radius server in place and configured on your network.

Step 2: Selecting a wireless security key:

Once you have chosen which wireless security type you want to use on your network, you will then need to create your wireless security key or wireless password.

Depending on the security type you choose, you will have the option of using either an ASCII or HEX format key.

ASCII refers to any letter or number you can see on your keyboard.

HEX refers to the letters A to F and the numbers 0 to 9.

You will need to ensure that your security key is the correct length. Your modem/router will display the required number of characters (letters and/or numbers) you need.



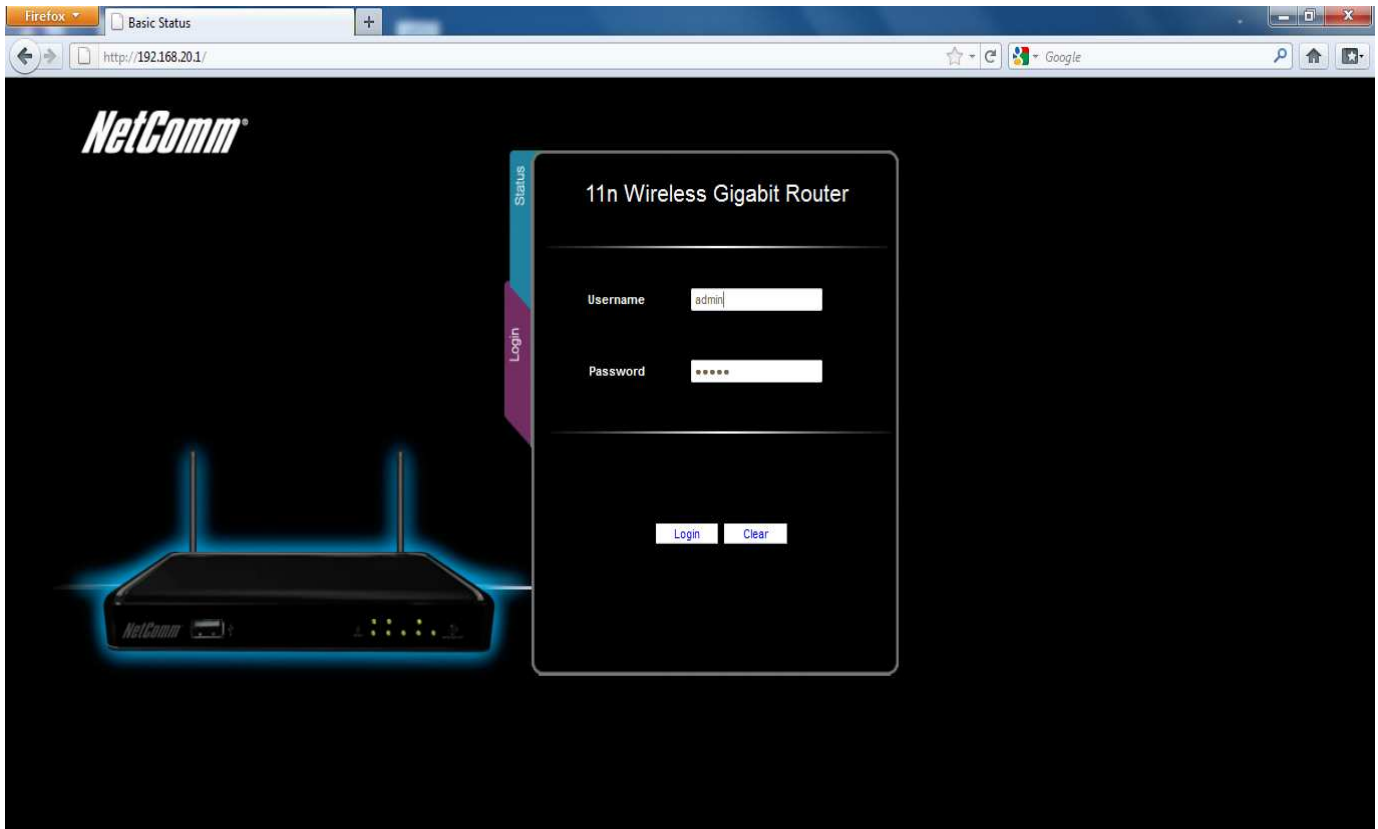
The default WEP key for most NetComm products is:

a1b2c3d4e5

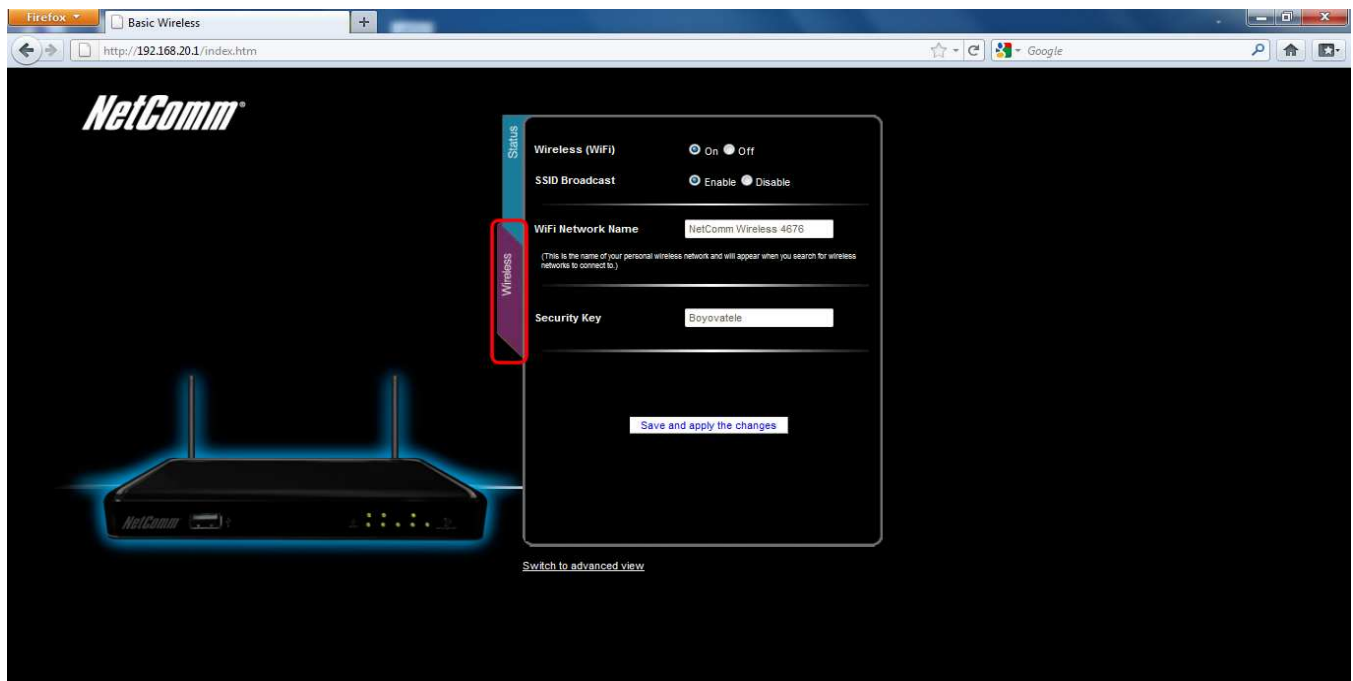
Step 3: Setting up your wireless security:

Please ensure that your modem/router is connected to your computer using an ethernet cable before continuing.

1. Navigate to <http://192.168.20.1> in a web browser.



2. Enter "admin" (no quotes) as both the username and password and press the **Login** button.
3. Select the **Wireless** tab.



4. Ensure the **Wireless (Wifi)** is set to On.
5. Ensure the **SSID Broadcast** is set to Enable.
6. Make a note of or change the **Wifi Network Name**.
7. Make a note of or change the **Security Key**.
8. If you would like to select a different network security type instead, select the **Switch to Advanced View** option. Then select the **Wireless** option from the **Network Setup** menu.

NETCOMM LIBERTY SERIES
NP805N – 11n Wireless Gigabit Router

NetComm [Switch to basic view](#)

Status **Network Setup** Forwarding Rules Security Settings Advanced Settings NAS SETTINGS Toolbox

Network Setup
DHCP Server
Wireless
Change Password

	Setting
Wireless Module	<input checked="" type="radio"/> Enable <input type="radio"/> Disable
Network ID(SSID)	NetComm Wireless 4676
SSID Broadcast	<input checked="" type="radio"/> Enable <input type="radio"/> Disable
Channel	Auto ▼
Wireless Mode	B/G/N mixed ▼
Authentication	WPA-PSK / WPA2-PSK ▼
Encryption	TKIP / AES ▼
Preshare Key	Boyovatele

Save Undo WDS Setting...
WPS Setup... Wireless Client List...

9. Click the drop down menu in the "**Authentication**" section and select the desired security type.
10. After selecting your desired security type (we're using WPA-PSK/WPA2-PSK for the example), enter the wireless security key you would like to use into the "**Preshare Key**" section and click the "**Save**" button.

Any changes to your wireless security settings will require you to reconfigure any wirelessly connected devices to use the new security settings. You will now need to re-setup any wirelessly connected computers with the new wireless security key. Please ensure that you have your wireless setup guide handy for this.