

Table of Contents

	Page
I. Introduction	2
II. Connecting the Prism Wireless Adapter.....	3
III. Installing the Prism Wireless Adapter.....	4
Configuring Windows 98 SE.....	4
Configuring Windows ME.....	6
Configuring Windows 2000.....	8
Configuring Windows XP.....	11
IV. Configuring the Prism Wireless Adapter.....	13
V. Configuring the AdHoc Feature.....	17
VI. Configuring File and Print Sharing	20

Introduction

Thank you for purchasing the *Prism Wireless Adapter*. This Prism Wireless Adapter is easy to use and easy to setup. If you are tired of all those messy wires just to connect a laptop to your Home network, then take your networking to the next level with the Prism Wireless Adapter. You will be able to share files, printers and even your High-Speed Internet access, all without wires.

Package Contents

- Make sure the following items came in this package:
- Prism Wireless Adapter
- USB Cable
- Prism Wireless Adapter Installation and User's Manual CD

Minimum System Requirements

- One Pentium class computer, 200 Mhz or higher (preferably 300 Mhz or above)
- Microsoft Windows 98 Second Edition (SE), Microsoft ME, Microsoft 2000 installed.

Connecting the Prism Wireless Adapter

1. It will not affect the installation process if your computer is on or off. However, if your computer is off then after you have connected the Prism Wireless Adapter, please be sure to turn on your computer.
2. Insert the Prism Wireless Adapter into the appropriate USB slot on either the front or the back of your PC.

Installing the Prism Wireless Adapter

For Windows 98 SE

1. After you have installed the Prism Wireless Adapter your computer will display an **Add New Hardware Wizard** screen. Click **Next**.



2. In the next screen, select the option **Search for the best driver for your device (Recommended)** and then click the **Next** button.



3. Please insert the Prism Wireless Adapter Installation CD into your CD-ROM drive. Select **CD-ROM Drive** and then click **Next**.



4. The installation is now complete. Please click **Finish**.



5. It will be necessary for you to restart your computer. Please click **OK** to restart your computer.



2. The installation is now complete. Please click **Finish**.



Windows ME

1. After you have installed the Prism Wireless Adapter your computer will display an **Add New Hardware Wizard** screen. Click **Specify the location of the driver (Advanced)**. Then click the **Next** button.



3. It will be necessary for you to restart your computer. Please click **OK** to restart your computer. If this screen does not appear please restart your computer manually.



For Windows 2000

1. After you have installed the Prism Wireless Adapter your computer will display the **Found New Hardware Wizard** screen. Click **Next**.



2. In the next screen, select the option **Search for the suitable driver for my device** and then click the **Next** button.



3. Please insert the Prism Wireless Adapter Installation CD into your CD-ROM drive. Select **Specify a location** and then click **Next**.



4. Your computer will locate the correct drivers named "AEIWLNIC.inf". Click **Next** to install the drivers.



5. The Digital Signature Affirms screen will appear. Click **Yes** to continue the installation process.



6. Then please click **Finish** to complete the installation process.



For Windows XP

1. After you have installed the Prism Wireless Adapter your computer will display a **Found New Hardware Wizard** screen. Select **Install from a list or specific location (Advanced)**, and then click **Next** to continue.



2. Give the directory where you have stored the Win XP Driver. Click **Next**.



- Once your system detected the driver, Microsoft will show a warning message. Click **Continue Anyway** for next step.



- The installation is now complete. Please click **Finish**.



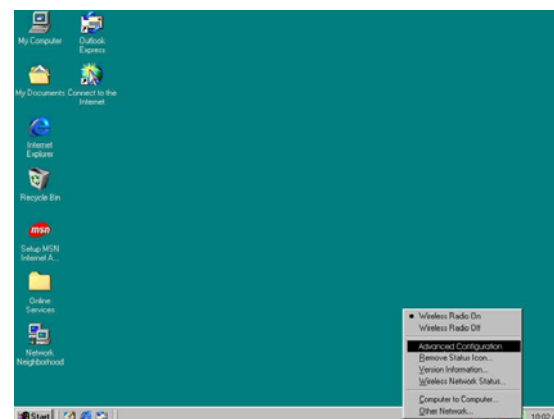
Configuring the Prism Wireless Adapter

After you have installed the software for the Prism Wireless Adapter an Icon will appear in your Task Bar on the lower right hand side on your Desktop. You will not be automatically connected to your Home Gateway or Access Point. Follow these steps to configure your Prism Wireless Adapter.

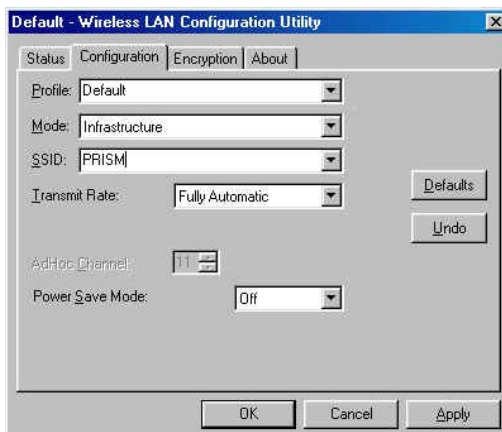


Prism Wireless Adapter Status Icon

- Right click on the Prism Wireless Adapter Status Icon. A list will appear as shown in the picture below. Make sure that there is a black dot next to the **Turn Wireless Radio On**. If the dot is not present then simply select it. Then you want to select the **Advanced Configuration...** selection from the given list.

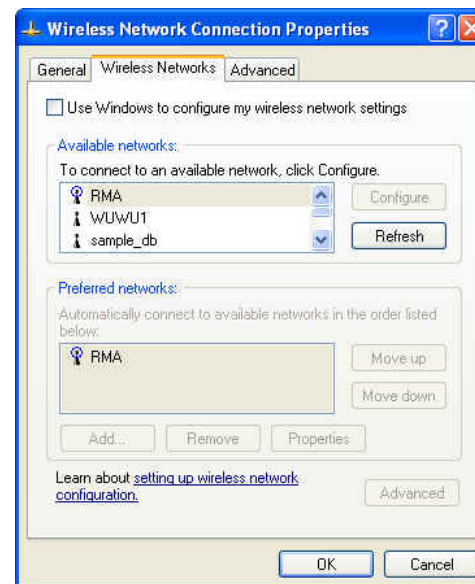


- The Prism Wireless Adapter's Properties screen will appear. Under the **Configuration** tab the **SSID** value should be the same as the **ESSID** value of your Home Gateway or Access Point. For example, if you have configured your Home Gateway or Access Point's ESSID value to "**PRISM**" then this same value needs to be typed into the SSID field in the following screen.



- After you have entered the appropriate SSID value click **Apply** and then click **OK**. Your Prism Wireless Adapter will now be able to connect to your Home Gateway or Access Point.

Note: To use Wireless LAN Utility under Windows XP, the "Automatic Wireless Network Configuration" needs to be disabled first by uncheck the check box **Use Windows to configure my wireless network settings** in the **Wireless Network Connection Properties** window under Control Panel.



Note: When the Prism Wireless Adapter is **Green** it means that your wireless connection is strong or good. When it is **Yellow** it means that your wireless connection is fair. When it is **Red** it means that your wireless connection is poor or weak. When the bar is Yellow or Red you may experience slower connection speeds then when they are Green.

Encryption (WEP)

You can use Encryption to add a level of security to your Prism Wireless Adapter network. This is not a required feature. If you are using a Home Gateway or Access Point you must be sure to use the same Encryption (WEP) keys for your Prism Wireless Adapter. Please follow these steps to set this feature up:

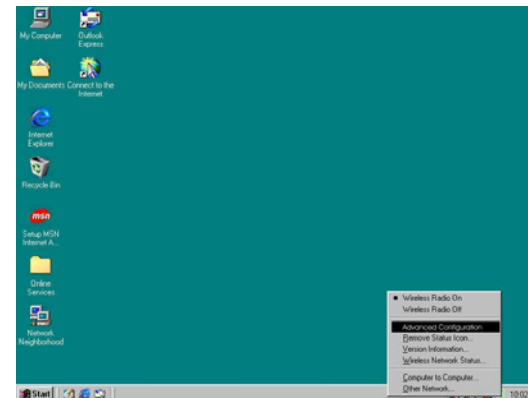
1. Right click on the Prism Wireless Adapter Status Icon. A list will appear as shown in the picture on the previous page. Then select **Advanced Configuration...** from the given list.
2. Click on the **Encryption** tab.
3. You can either select **64 bit** or **128 bit** Encryption depending on your needed level of security. You can select **Create Keys with Passphrase** (a passphrase is the same as a password, with the same type of functionality). Once you have entered a pass phrase the utility will automatically generate the 4 keys. Remember, if you are using a Home Gateway or Access Point these keys will need to be added to it. If you already have a set of keys configured into your Home Gateway or Access Point or you prefer to create the keys manually, select **Create Keys Manually** and enter them in the given fields. Click **Apply** and then **OK** to activate your settings.

Configuring the AdHoc Feature

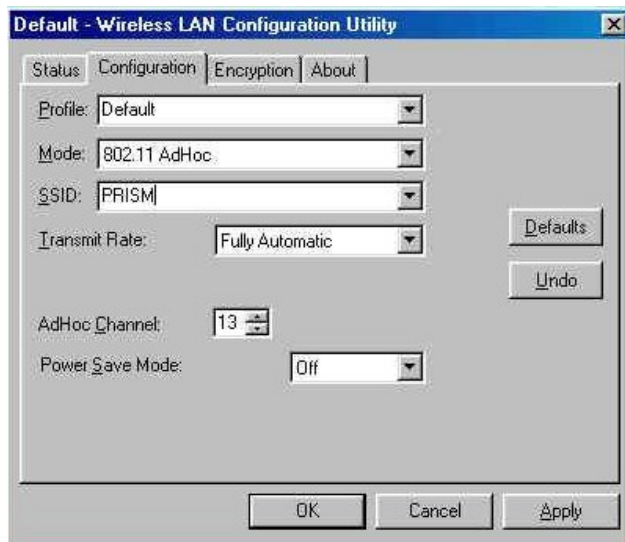
For Win 98 SE, ME, 2000

AdHoc enables two or more computers with the Prism Wireless Adapter to talk to each other. The most common usage for this feature is multi-player games in which each player can play the game from each computer against one another via this Adhoc network. If you use the AdHoc feature then a Home Gateway or Access Point is not required. Please follow these steps to set up the AdHoc feature:

1. Right click on the Prism Wireless Adapter Status Icon. A list will appear as shown in the picture below. Then select **Advanced Configuration...** from the given list.



2. In the **Profile** field type in any name you wish. This will save all the settings under that name. Then click on the down arrow in the **Mode** field and select **802.11 AdHoc**. Enter an **SSID** value in the given field. The SSID value should be the same on each computer that you want to network together. Then in the **AdHoc Channel** box select a channel between the numbers **1-13**. This value also must be the same on each computer that you wish to network. Finally, click **Apply** and **OK** to activate the settings. Be sure to repeat this for each computer you want to network.



For Windows XP

1. On your computer's desktop click **Start**, then select **Setting** and then select **Control Panel**. In the Control Panel window double click the **Network Connections** icon.
2. The Wireless Network Connection properties screen will appear. Click **Wireless Networks** tab, and then select **Advanced**.



3. The following screen will appear. Please select **Computer-to-computer (AdHoc) network only**. Click **Close**.

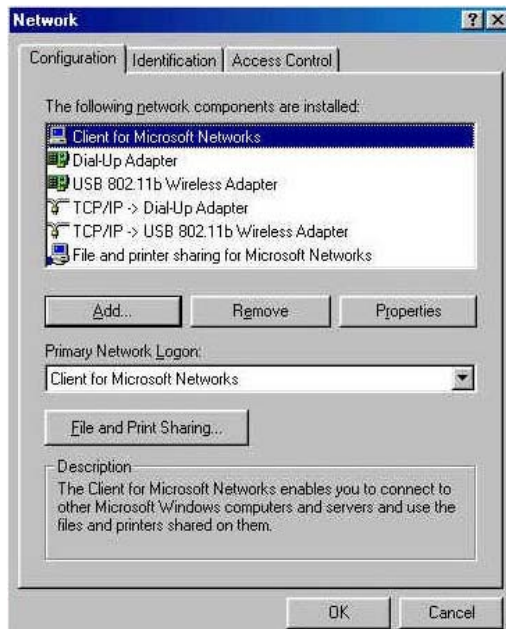


Configuring File and Print Sharing

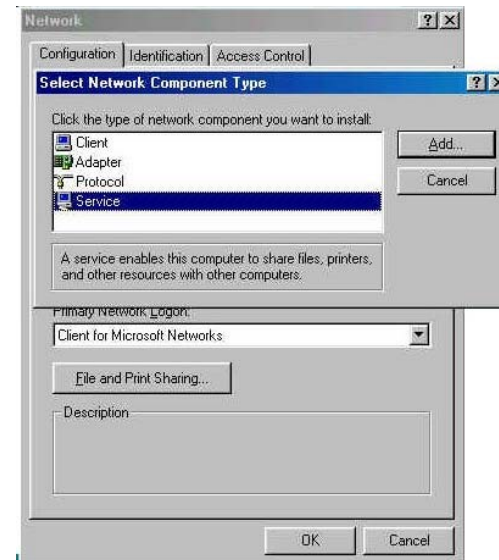
If you have and are using a Home Gateway or Access Point you can establish a network that will allow you to share files and printers. This is an easy method to set up a network in your home or small office. Please follow these steps to setup file and print sharing:

For Windows 95, 98 and ME

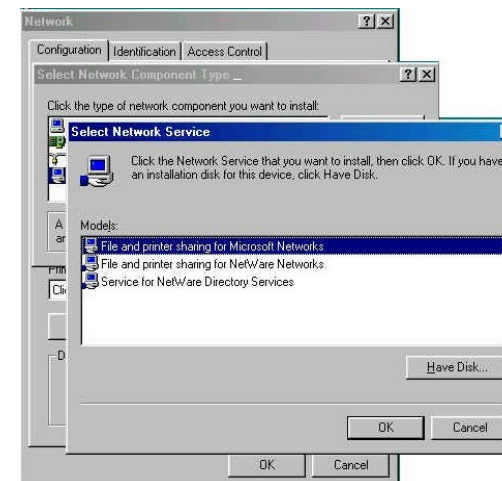
1. On your computer's desktop click **Start**, then select **Settings** and then select **Control Panel**. In the **Control Panel** window double click the **Network** icon.
2. The following **Network** screen should appear. Click the **Add** button.



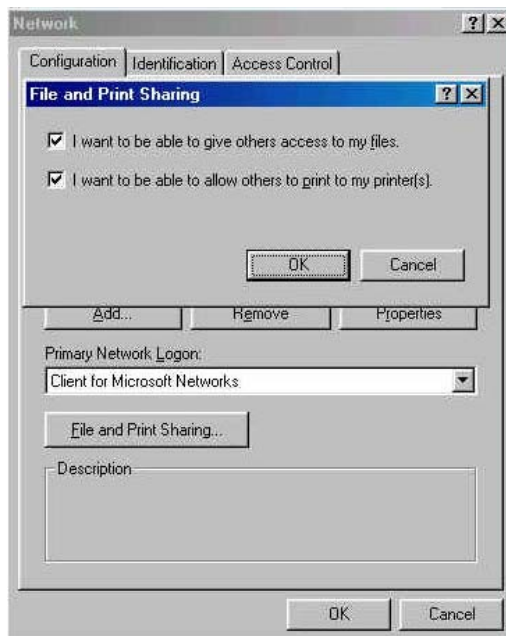
3. In the **Select Network Component Type** screen, click **Service** and then click the **Add** button.



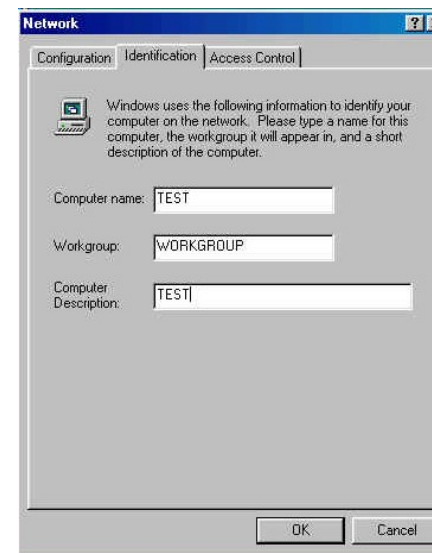
4. In the following screen please select **File and printer sharing for Microsoft Networks** from the given list.



5. In the **File and Print Sharing** screen make sure that both of the selection have a check mark beside them. If they do not please click on the box next to each statement and then click **OK**.

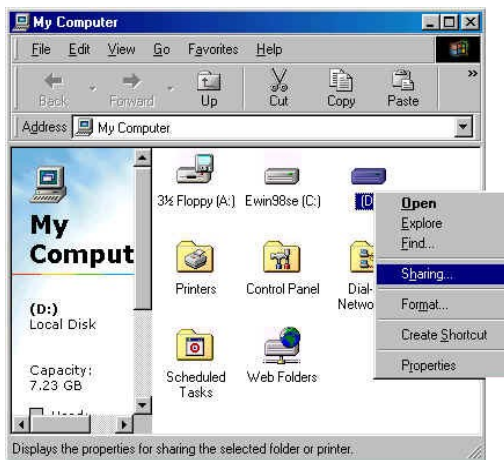


6. After you have clicked OK you will return to the network screen from step 2. Please click on the **Identification** tab (see the first image on page 19).
- **Computer Name:** In this field you can type any name you want. (i.e. My Computer, John, CPU654) Do not use the same name for each computer you wish to have on your network.
 - **Workgroup:** This field enables you to set a unique name for your network. This name must be set up on every computer you wish to have on your network.
 - **Computer Description:** You can enter anything you wish. Traditionally, the location name or main user's name is used in this field.

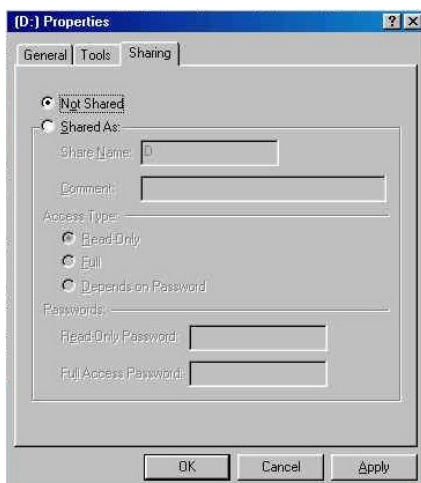


7. Click on the **Configuration** tab. This will take you back to the screen from step 2. In the **Primary Network Logon:** box, located just above the **File and Print Sharing** button, make sure that **Client for Microsoft Networks** is selected. If it is not then click the down arrow and select it from the given list. Click **OK**.
8. A screen will appear asking you to restart your computer. Click **Yes** to restart the computer. If you do not see this screen please restart your computer manually. After your computer restarts you will be asked to supply a User Name and Password. Enter whatever you would like but be sure to write down these values, as they will enable you to access your network.

9. After your computer has restarted and you entered a password and user name, you must enable a file or drive for sharing. Locate the file or drive you wish to share. (The easiest way to achieve this is through your Windows Explorer, located in the **start** menu.) Right click on the **File** or **Drive** you wish to share. In the given menu select **Sharing**.



10. The following screen will appear. Please select **Shared As**. This will enable other users on your network to see the file or drive you selected. Then you can choose the Access Type:



- **Read Only:** This will allow other users on your network to view and read the file or drive you selected. They will not be able to modify it in any way. You can further restrict their privlidges by entering a password in the appropriate field.
- **Full:** This will allow other users on your network to read, modify, move and delete any information in the shared drive or file. You can further restrict their privlidges by entering a user name and password.
- **Depends on Password:** This will allow you to set both Read Only and Full access on the shared file or drive. The level of access will depend on the passwords you enter in the appropriate field.

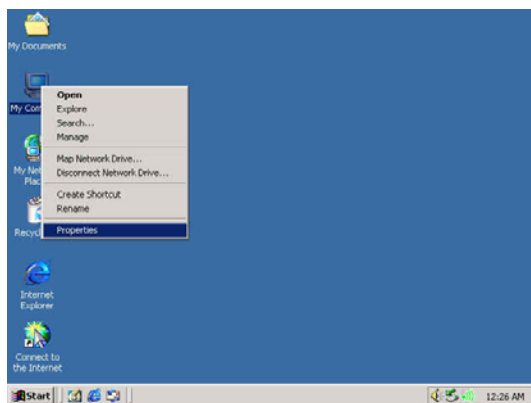
When you are finished click **Apply** and then **OK**.



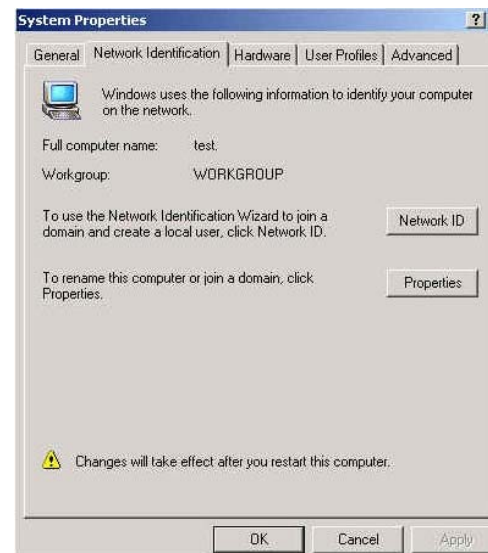
11. Next you need to share your printer. On your desktop, click **Start**, click **Settings**, and then select **Printers**.
12. Right click on the printer you want to share. Select **Sharing** from the given list.
13. The next step will be to enable the sharing by selecting the **Share As** button. It will automatically insert a default name for the Share Name. You may set a password for the printer at this time if you want to restrict who on the network can use this resource. You may also set the default printer settings by modifying information on the other tabs of this window.

For Windows 2000

1. After you have installed and configured your USB Adapter, Windows 2000 will automatically enable file and print sharing for your computer. The only item that needs to be altered is your workgroup settings. All the computers on your network must have the same workgroup name but different computer names. To check or change this locate the **My Computer** icon on your desktop. Right click on it and select **Properties** from the given list.



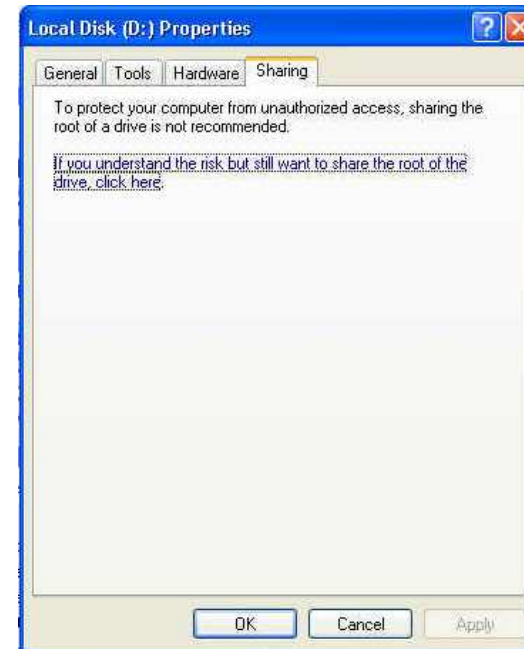
2. In the **System Properties** click on the **Network Identification** tab. If the “Workgroup” name is already the same as all the other computers on your network, then you do not need to change it. Click **OK**. If it is not the same then click **Properties**.



3. In the **Computer Name:** box type a name that is different from your other PC's on your network. Then, in the **Workgroup** box type the name that you are using to identify your network. This will be the same on each computer on your network. Click **OK** and you will return to the **System Properties** screen. Click **OK** again and even if you are not asked to do so, please restart your computer.

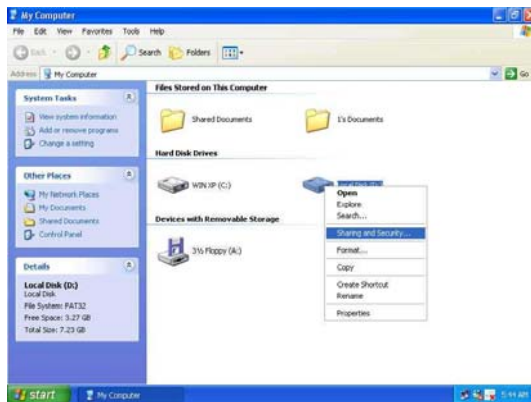


- The following screen will appear. Please click **Sharing** tab and **If you understand the risk but still want to share the root of the drive**. Click **here** then **OK**.



For Windows XP

- On your computer's desktop click **My Computer**, Right click on the **File** or **Drive** you wish to share. In the given menu select **Sharing and Security...**



- The **Enable File Sharing** screen will appear, please select **Just enable file sharing**. Click **OK** button.



4. After you have clicked **OK**, the **Sharing** dialogue will appear again, please select the first check box and type a share name on the **Network sharing and security** box. When you are finished click **OK**.

