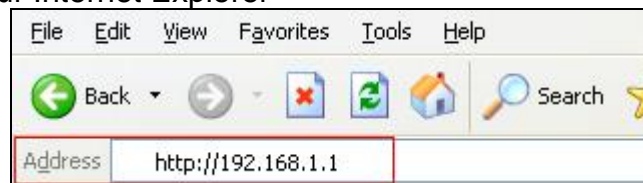


## RTA100(+)

### Procedure to set modem to bridge mode

1. Open your Internet Explorer



2. In the address bar type **192.168.1.1**
3. It will prompt you the web username and password, type **"admin"** for both, Click [OK] (Type **"root"** for both on the RTA100)

**Quick Start**

Use this page to confirm connection parameters and enter Username Password to connect.

DSL		Up		Down	
<b>Operational Status:</b>	Showtime/Data	<b>Speed</b>	128 Kbps	<b>Speed</b>	512 Kbps

WAN Interfaces							
Interface	Encapsulation	IP Address	Mask	Gateway	Lower Interface	VPI/VCI	Status
<b>ppp-0</b>	PPPoA	0.0.0.0	0.0.0.0	0.0.0.0	<b>aal5-0</b>	8/35	

<b>Encapsulation:</b>	PPPoA VC-Mux	<b>PPP</b>	
<b>VPI:</b>	8	<b>Username:</b>	user@isp.com
<b>VCI:</b>	35	<b>Password:</b>	••••

4. Click on **ppp-0** and when the **Point to Point Protocol Configuration** page comes up, click on the **Rubbish bin** under **Action** to delete it

Home | Quick Configuration

### Point to Point Protocol (PPP) Configuration

This page is used to Configure and View PPP interfaces.

Inactivity TimeOut(mins):

Ignore WAN to LAN traffic while monitoring inactivity: ☒

Interface	VC	Interface Sec Type	Protocol	WAN IP	Gateway IP	Default Route	Use DHCP	Use DNS	Oper. Status	Action
ppp-0	aal5-0	Public	PPPoA	0.0.0.0	0.0.0.0	Enable	Disable	Enable	Link Down	

Copyright © 2001-2002 GlobespanVirata, Inc. All rights reserved.

5. Click on the **Home** tab, then on the **Advanced Configuration** link

6. Set the following:

- Operation Mode to **Enabled**
- Encapsulation to **1483 Bridged IP LLC**
- VPI: **8**
- VCI: **35**
- Bridge: **Enabled**
- Default Route: **Disabled**

7. Click **Submit**

The screenshot shows the 'Advanced Configuration' page of a network device. The top navigation bar includes tabs for Home, LAN, WAN, Bridging, Routing, Services, and Admin. Below the navigation bar, there are links for Quick Start, Advanced Configuration (highlighted with a red box), System View, and System Mode. The main heading is 'Advanced Configuration', followed by the instruction 'Use this page to quickly configure the system.'.

The configuration form contains the following fields:

- ATM Interface: 0
- Operation Mode: Enabled (highlighted with a red box)
- Encapsulation: 1483 Bridged IP LLC (highlighted with a red box)
- VPI: 8 (highlighted with a red box)
- VCI: 35 (highlighted with a red box)
- Bridge: Enabled (highlighted with a red box)
- IGMP: Disabled
- IP Address: 0.0.0.0
- Subnet Mask: 0.0.0.0
- Use DHCP: ☐ Enable ☒ Disable
- Default Route: Disabled (highlighted with a red box)

8. Click **Services** tab

Under the NAT Options, set to **Disable**

LAN | WAN | Bridging | Routing | **Services** | Admin

NAT | RIP | FireWall | IP Filter | DNS | Blocked Protocols

### Network Address Translation (NAT) Configuration

Network Address Translation, a security protocol in which the device translates the computers to new addresses before sending data out on the Internet.

**NAT Options:** NAT Global Info ▼

☐ Enable ☒ **Disable**

NAT Global Information	
TCP Idle Timeout(sec):	86400
TCP Close Wait(sec):	60

9. Click **Submit**

10. Click on the **Bridge Tab**

Here you need to make sure that **Bridge** is enabled and you also need to make sure that **eth-0** and **eo-a-0** are in the list of interfaces to bridge. If they are not, you will need to add them.

GS8100 Configuration Manager GUI - Microsoft Internet Explorer provided by Alloy Computer Products

File Edit View Favorites Tools Help Links >>

Home | LAN | WAN | **Bridging** | Routing | Services | Admin

Bridging | LAN Config | DSL | ATM VC | RFC 1483 Interface(EoA)

### Bridge Configuration

Use this page to Add and Modify Bridging information

**Bridging:** Enable/Disable

**WAN to WAN Bridging:** Enable/Disable

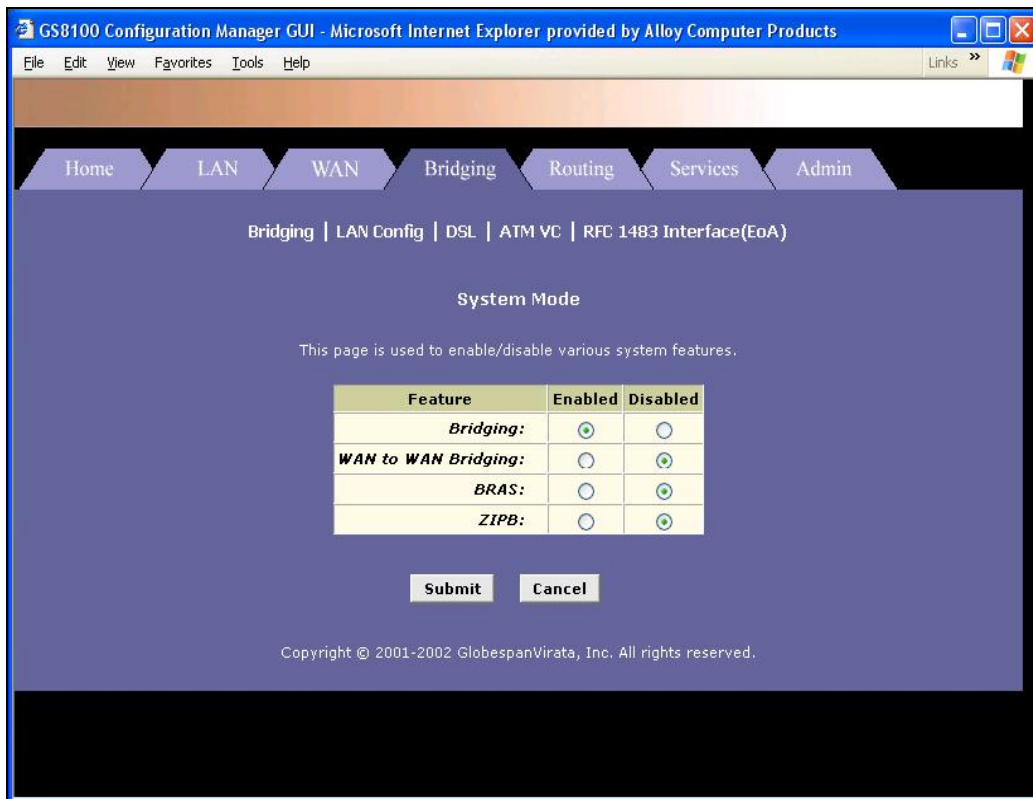
**ZIPB:** Enable/Disable

Interface Name	Action
eth-0	
eo-a-0	
eth-0 ▼	<b>Add</b>

**Cancel** **Refresh** **Help**

Copyright © 2001-2002 GlobespanVirata, Inc. All rights reserved.

11. Click the **Bridging: Enable/Disable** text and enable **Bridging**



12. Click Submit



13. Click **Admin**

14. Click **Save & Reboot**

15. Click **Save**

Process completed, Close your Internet Explorer