

NETCOMM ROADSTER SERIES
56K USB Modem

NetComm[®]



1

Installing your Drivers



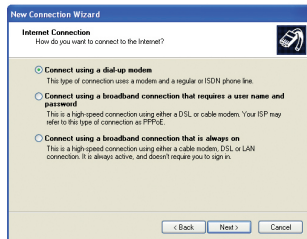
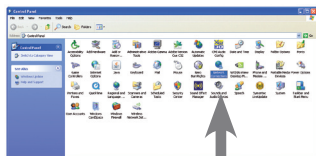
1. Please insert the included AM5067 Support CD into your PC's CD-ROM driver
2. The CD should auto-start. Please Select **Install Drivers**
3. A window will pop up asking for confirmation. Please select **OK**
4. Click **Continue Anyway** to finish the installation, should your operating system prompt you to do so.

2 Connecting Your Device



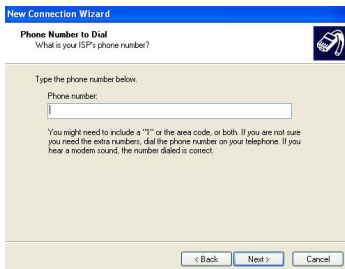
1. Connect the AM5067 to your PC with the supplied USB cable.
2. Plug one end of the supplied RJ-11 phone cable into the Line port of the AM5067. Plug the other end of the cable into the phone outlet on your wall.
3. Take the RJ-11 phone cable of your telephone and plug it into the Phone port of the AM5067 – **IF REQUIRED**

3 Connecting to Your Dial-Up ISP



With Windows XP

1. Navigate to the **control panel** on your computer
2. Double click on the **Network Connections** icon
3. On the left hand menu, select **Create a new connection**
4. A wizard will open that will assist you to set up your dial-up connection. Click **Next** to begin the **setup**
5. When prompted, select **Connect to the Internet** and press **Next**
6. Choose to **Setup my connection manually** and click **Next**
7. Select **Connect using a dial-up modem** and press **Next**



New Connection Wizard

Phone Number to Dial
What is your ISP's phone number?

Type the phone number below:

Phone number:

You might need to include a "1" as the area code, or both. If you are not sure you need the extra numbers, dial the phone number on your telephone. If you hear a modem sound, the number dialed is correct.

< Back Next > Cancel



New Connection Wizard

Internet Account Information
You will need an account name and password to sign in to your Internet account.

Type an ISP account name and password, then write down this information and store it in a safe place. (If you have forgotten an existing account name or password, contact your ISP.)

User name:

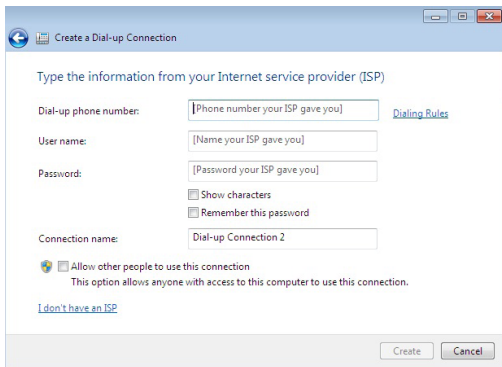
Password:

Confirm password:

☐ Make this the default Internet connection

< Back Next > Cancel

8. Enter the name of your ISP and click **Next**
9. Enter the phone number that is used to dial up to the Internet as supplied by your ISP and click **Next**
10. Choose who you would like to be able to access this connection and press **Next**
11. Enter the user name and password for your dial-up account and click **Next**
12. When prompted, click **Finish** to complete setting up your connection



With Windows Vista/7

1. Navigate to the **control panel** on your computer
2. Double click on the **Network and sharing centre** icon
3. Click on **Setup a connection or network**
4. A window will open asking you to enter details supplied by your ISP. Enter **dial-up phone number, username** and **password**. You have the option of naming your dial-up connection. When complete, press **Create**
5. Another window will open confirming your connection is ok to use

4

Congratulations!



Now you have successfully completed the set-up process.

5

NetComm Liberty Series



NetComm's 3G Routers allow multiple devices to connect to the one 3G USB modem either wirelessly or with a wired connection. 3G USB modems are designed for a single Internet connection.

A 3G Router will enable you to share your 3G connection with up to 20 devices at a time, allowing you to set up an instant wireless hotspot on the go.

3G17Wn Wireless N150 to share your Internet connection with wireless speeds of up to 150Mbps* 2 Ethernet ports

3G18Wn Wireless N300 to share your Internet connection with wireless speeds of up to 300Mbps* 4 Ethernet ports

* Maximum wireless signal rate and coverage values are derived from IEEE Standard 802.11g and 802.11n Draft 2.0 specifications. Actual wireless speed and coverage are dependent on network and environmental conditions included but not limited to volume of network traffic, building materials and construction/layout.