

NetComm[®]
Broadband Solutions

Installation Guide

NP560 and NP562
Indoor Wireless Booster

Contents

Introduction	4
Package Contents	5
Installing the NetComm Indoor Wireless Booster (NP560/NP562)	6
Electrical Specification	8
Appendix A: Registration and Warranty Information.....	9

ATTENTION:

The use and installation of this WiFi device must comply with the Australian Spectrum Management legislation which specifies that a WiFi transmitting station must not have an Effective Radiated Power (ERP) exceeding 4-Watts.

ERP is a radio frequency signal strength field measurement and can be calculated as: Wireless device output power, less the power lost in the antenna feed-line (antenna connection cable), plus the power gain of the antenna itself.

If you are unsure about any of these parameters or how to calculate them, please consult your installer or dealer. Alternatively you can visit the ACMA website at www.acma.gov.au

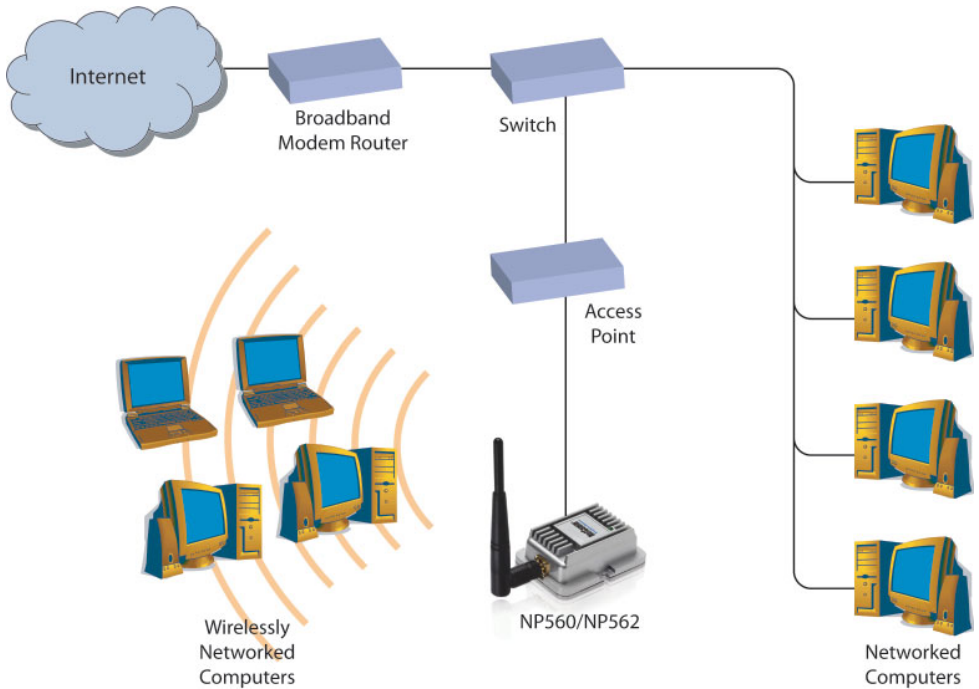
Exceeding such power restriction limits is illegal and may result in undesirable radio interference which is strictly monitored by the ACMA.



Introduction

Thank you for purchasing NetComm's INDOOR WIRELESS BOOSTER. This product is designed to dramatically increase your wireless coverage and eliminate non-coverage wireless trouble spots. The Indoor Wireless Booster will increase the effective range of your 802.11b/g Access Point or wireless Router.

The Wireless Booster saves wiring costs and supports your wireless infrastructure by driving signals into those hard-to-reach areas. It is perfect for covering large open plan office areas, warehouse environments, public spaces and hotspots.



Package Contents

Your NP560/NP562 Indoor Wireless Booster package includes the following items.

- One NP560 or NP562 Indoor Wireless Booster
(Note: Antenna shown is not included in this kit. You will need to use the detachable antenna from your Wireless Router or Access Point.)



- One Installation Guide



- One AC Adapter



- One RG 316 Cable



If any of the above items are missing or damaged, please contact NetComm immediately.

Installing the NetComm Indoor Wireless Booster (NP560/NP562)

Step 1:

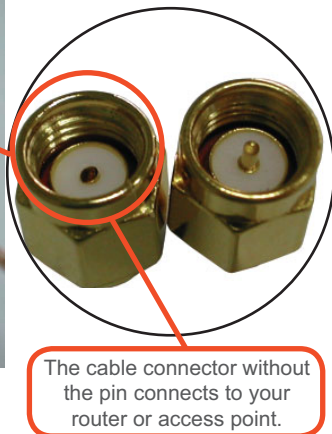
Unscrew and remove the existing antenna on your Wireless Router or Access Point.



Note: Your equipment must have a detachable SMA antenna in order to use the NP560/NP562 NetComm Wireless Booster

Step 2:

The connector cable that comes with the Booster needs to be installed in a specific way. On the bottom of the Booster you will see one end connects marked “To Radio”. This end connects to your Router/Access Point. The other end is marked “To Antenna” and this is where you re-attach your antenna.



The cable connector without the pin connects to your router or access point.

The supplied cable is fitted with two different connectors; one designed to attach to your Router/Access Point and the other designed to attach to the booster. Please ensure you connect the ends correctly or you may damage the Booster or your Router/Access Point.

Step 3: Screw the antenna from your Router/Access Point to the end of the Booster marked “To Antenna”



Step 4: Connect the power to the DC jack on the Booster.



IMPORTANT:

The NP560/NP562 is compatible with 802.11b/g equipment only.

Your router or access point must have a detachable SMA antenna in order to use a Wireless Booster.

The connector cable uses SMA connectors (adaptors are available from NetComm for other aerial connector types).

The installation procedure is the same for NP560 (200mW) and NP562 (500mW) Boosters.

Longer connection cables are available to connect your Router/Access Point to the Booster, however, these cables need to be made by a cable specialist and will reduce your signal strength.

The NP560/NP562 transmit LED flickers to indicate data throughput. It does not indicate that the device is switched on or has power.

Electrical Specification

Operating Range	2400~2500GHz
Operation Mode	Bi-Directional, half duplex, auto-switching via carrier sensing
Connector	SMA Receptacle
Impedance	50 Ohm
Frequency Response	+/- 1dB over operating range
Transmit Input Power	Maximum 100mW - Minimum 6mW
Output Power	(11g @ 54Mbps) - NP560: 200mW (23dBm nominal) - NP562: 500mW (27dBm nominal)
Transmit Gain	12dBm (adjustable)
Receive Gain	14dBm (typical)
Receive Noise Figure	3.5dBm nominal Operating
Operating Temperature	-20 to +70°
Operating Humidity	up to 95% relative humidity
Power Adapter	6V DC max. current <1A
Booster	7.8 x 5.6 x 2.9 cm
Material	Cast Aluminium
DC Adapter	< 120g
LED indicator	TX LED
Approvals	C-Tick N367

Appendix A: Registration and Warranty Information

All NetComm Limited ("NetComm") products have a standard 12 month warranty from date of purchase against defects in manufacturing and that the products will operate in accordance with the specifications outlined in the User Guide. However some products have an extended warranty option (please refer to your packaging). To be eligible for the extended warranty you must supply the requested warranty information to NetComm within 30 days of the original purchase by registering on-line via the NetComm web site at:

www.netcomm.com.au

Contact Information

If you have any technical difficulties with your product, please do not hesitate to contact NetComm's Customer Support Department.

Email:	support@netcomm.com.au
Fax:	(+612) 9424-2010
Web:	www.netcomm.com.au

Copyright Information

This manual is copyright. Apart from any fair dealing for the purposes of private study, research, criticism or review, as permitted under the Copyright Act, no part may be reproduced, stored in a retrieval system or transmitted in any form, by any means, be it electronic, mechanical, recording or otherwise, without the prior written permission of NetComm Limited. NetComm Limited accepts no liability or responsibility, for consequences arising from the use of this product. Please note that the images used in this document may vary slightly from those of the actual product. Specifications are accurate at the time of the preparation of this document but are subject to change without notice.

NetComm Limited reserves the right to change the specifications and operating details of this product without notice. NetComm is a registered trademark of NetComm Limited. All other trademarks are acknowledged the property of their respective owners.

Customer Information

ACA (Australian Communications Authority) requires you to be aware of the following information and warnings:

- (1) This unit shall be connected to the Telecommunication Network through a line cord which meets the requirements of the ACA TS008 Standard.
- (2) This equipment has been tested and found to comply with the Standards for C-Tick and or A-Tick as set by the ACA. These standards are designed to provide reasonable protection against harmful interference in a residential installation. This equipment generates, uses, and can radiate radio noise and, if not installed and used in accordance with the instructions detailed within this manual, may cause interference to radio communications. However, there is no guarantee that interference will not occur with the installation of this product in your home or office. If this equipment does cause some degree of interference to radio or television reception, which can be determined by turning the equipment off and on, we encourage the user to try to correct the interference by one or more of the following measures:
 - Change the direction or relocate the receiving antenna.
 - Increase the separation between this equipment and the receiver.
 - Connect the equipment to an alternate power outlet on a different power circuit from that to which the receiver/TV is connected.
 - Consult an experienced radio/TV technician for help.
- (3) The power supply that is provided with this unit is only intended for use with this product. Do not use this power supply with any other product or do not use any other power supply that is not approved for use with this product by NetComm. Failure to do so may cause damage to this product, fire or result in personal injury.

Product Warranty

The warranty is granted on the following conditions:

1. This warranty extends to the original purchaser (you) and is not transferable;
2. This warranty shall not apply to software programs, batteries, power supplies, cables or other accessories supplied in or with the product;
3. The customer complies with all of the terms of any relevant agreement with NetComm and any other reasonable requirements of NetComm including producing such evidence of purchase as NetComm may require;
4. The cost of transporting product to and from NetComm's nominated premises is your responsibility; and,
5. NetComm does not have any liability or responsibility under this warranty where any cost, loss, injury or damage of any kind, whether direct, indirect, consequential, incidental or otherwise arises out of events beyond NetComm's reasonable control. This includes but is not limited to: acts of God, war, riot, embargoes, acts of civil or military authorities, fire, floods, electricity outages, lightning, power surges, or shortages of materials or labour.
6. The customer is responsible for the security of their computer and network at all times. Security features may be disabled within the factory default settings. NetComm recommends that you enable these features to enhance your security.

The warranty is automatically voided if:

1. You, or someone else, use the product, or attempts to use it, other than as specified by NetComm;
2. The fault or defect in your product is the result of a voltage surge subjected to the product either by the way of power supply or communication line, whether caused by thunderstorm activity or any other cause(s);
3. The fault is the result of accidental damage or damage in transit, including but not limited to liquid spillage;
4. Your product has been used for any purposes other than that for which it is sold, or in any way other than in strict accordance with the user manual supplied;
5. Your product has been repaired or modified or attempted to be repaired or modified, other than by a qualified person at a service centre authorised by NetComm; and,
6. The serial number has been defaced or altered in any way or if the serial number plate has been removed.

Limitations of Warranty

The Trade Practices Act 1974 and corresponding State and Territory Fair Trading Acts or legalisation of another Government ("the relevant acts") in certain circumstances imply mandatory conditions and warranties which cannot be excluded. This warranty is in addition to and not in replacement for such conditions and warranties.

To the extent permitted by the Relevant Acts, in relation to your product and any other materials provided with the product ("the Goods") the liability of NetComm under the Relevant Acts is limited at the option of NetComm to:

- Replacement of the Goods; or
- Repair of the Goods; or
- Payment of the cost of replacing the Goods; or
- Payment of the cost of having the Goods repaired.



NetComm[®]
Broadband Solutions

NETCOMM LIMITED ABN 85 002 490 486
PO Box 1200, Lane Cove NSW 2066 Australia
P: 02 9424 2070 **F:** 02 9424 2010
E: sales@netcomm.com.au **W:** www.netcomm.com.au