



Gigabit Switch

5-PORT 1000BASE-T GIGABIT ETHERNET SWITCH

networking



5 Gigabit
Ethernet
Ports

Set up your network for the future today

Replace your existing hub or switch with this NP3005 and you're ready for the future today. You can upgrade one or more of your PCs to full Gigabit network access whenever you need to and still be fully compatible with older PCs. The NP3005 services all Ethernet network speeds automatically – from 10 through 100 to the latest 1000 Mbps (also known as Gigabit).

UPGRADE TO GIGABIT SPEED & POWER

- If you replace any hub with the NP3005, your data throughput will improve enormously – without having to do anything else.
- If you upgrade an existing 10/100 switch, you need only add a Gigabit NIC (also available from NetComm) to a PC to enjoy full-duplex, dedicated bandwidth of up to 2000Mbps - perfect for graphics, multimedia and any application that has to move large files across the network quickly.
- If you have a Gigabit server backbone, you can connect any existing 10/100 Ethernet LAN without any additional equipment.

All five ports offer auto-negotiation, automatic MDI/MDI-X crossover detection, address learning and aging, so you can plug it and forget it.

The NP3005 will also keep your high-speed clients from bogging down in lower-speed traffic with 802.3x flow control and head-of-line blocking prevention.

CHECK THESE GREAT BENEFITS

- Handles all Ethernet speeds automatically
- Forwards and filters packets at non-blocking, full wire speed
- Address learning and aging
- 802.3x flow control and head-of-line blocking prevention

Key Features

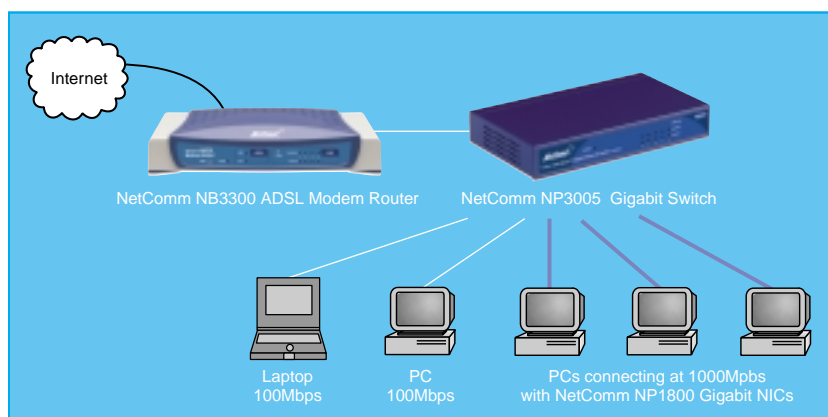
- 5 x 10/100/1000Mbps Auto-negotiation Gigabit Ethernet ports
- Auto MDI/MDI-X for each port
- Full/Half duplex transfer mode for 10/100Mbps
- Full duplex transfer mode for 1000Mbps
- Wire speed reception and transmission
- Store-and-Forward switching method
- Integrated address Look-Up Engine, supports 8K absolute MAC addresses
- Supports 256K Bytes RAM for data buffering
- Extensive front-panel diagnostic LEDs
- IEEE 802.3x flow control for full-duplex
- Back pressure flow control for half-duplex

3 Year Warranty*

1 year warranty out of the box. Extra 2 years **FREE** with online registration at www.netcomm.com.au *Conditional on registration online.

Gigabit Switch

5-PORT 1000BASE-T GIGABIT ETHERNET SWITCH



Technical Specifications

Standards	<ul style="list-style-type: none"> • IEEE 802.3 10BASE-T • IEEE 802.3u 100BASE-TX • IEEE 802.3Ab 1000BASE-T
Network Media	ETHERNET: 2-pair UTP Cat. 3,4,5, up to 100M FAST ETHERNET: 2-pair UTP Cat-5, up to 100M GIGABIT ETHERNET: 4-pair UTP Cat-5 plus, up to 100M
Protocol	CSMA/CD
Topology	Star
Number of Ports	5 x 10/100/1000Mbps Auto-MDI/MDI-X port with RJ-45 connector
Network Data Transfer Rate	ETHERNET: 10Mbps (Half-duplex) 20Mbps (Full-duplex) FAST ETHERNET: 100Mbps (Half-duplex) 200Mbps (Full-duplex)
GIGABIT ETHERNET:	2000Mbps (Full-duplex)
Data RAM Buffers	256K Bytes per device
Filtering Address Table	8K entries per device
Diagnostic LEDs	PER UNIT: Power PER PORT: Link/ACT, 1000Mbps, 100Mbps
Power Adaptor	DC 7.5V/1.5A
Power Consumption	8.5 watts. (max)

Technical Specifications

Dimensions	171(w) x 98(d) x 29mm (h)
Temperature	OPERATING: 0 ~ 40°C STORAGE: -10 ~ 70°C
Humidity	OPERATING: 10% ~ 90% RH STORAGE: 5% ~ 90% RH
Emission	FCC Class A, CE mark Class A, VCCI-A, C-Tick

System Requirements

A Pentium processor
Windows® 98, Me, NT, 2000 or Macintosh OS9.x and higher
64Mb RAM
Hard disk with 200Mb free space
CD-ROM drive for software installation
Ethernet network
10Mbps or 10/100Mbps or 1000Mbps Network Interface Card

Package Contents

NP3005 5-Port Gigabit Ethernet Switch
User Guide
Power Adaptor DC 7.5V/1.5A



Your Netcomm dealer:

NetComm is Australia's dynamic data communications and networking solutions provider. For more information on this and other NetComm products, please visit www.netcomm.com.au

NetComm Limited ABN 85 002 490 486

PO Box 1200, Lane Cove NSW 2066 Australia.

PHONE (02) 9424 2070 • FAX (02) 9424 2010

www.netcomm.com.au • EMAIL sales@netcomm.com.au



Trademarks and registered trademarks are the property of NetComm Limited or their respective owners. Specifications are subject to change without notice. Images shown may vary slightly from the product.