

Information

- Product Code: NB6 Series ADSL2+ Modem Router (NB6/NB6W/NB6Plus4/ NB6Plus4W)
- Current Firmware Version: 3.63u
- Upgrade to Firmware Version: 3.64y
- Filename:
 - NB6: cfe-nb6-v364y_a2pb025c
 - NB6W: cfe-nb6w-v364y_a2pb025c
 - NB6Plus4: cfe-nb6plus4-v364y_a2pb025c
 - NB6Plus4W: cfe-nb6plus4w-v364y_a2pb025c
- Date: 17, April, 2009

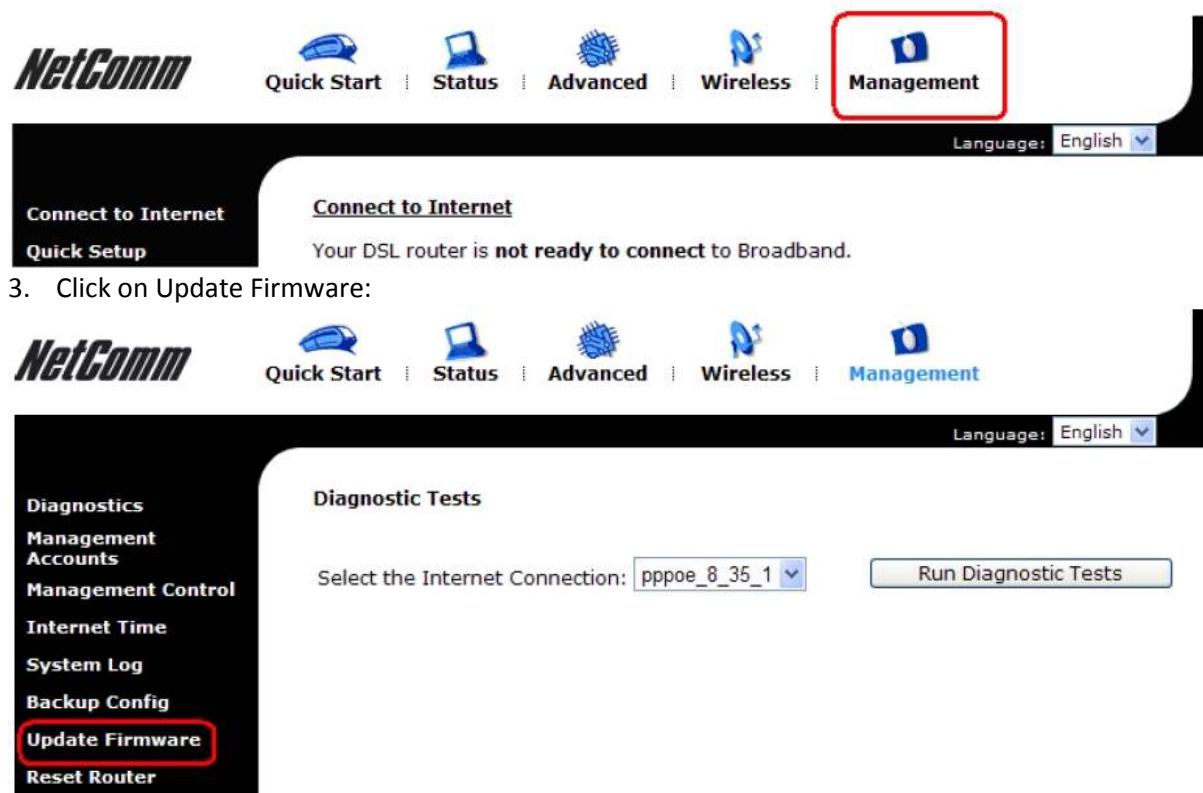
Bug Fix

- Fixed Adam PPP issue.

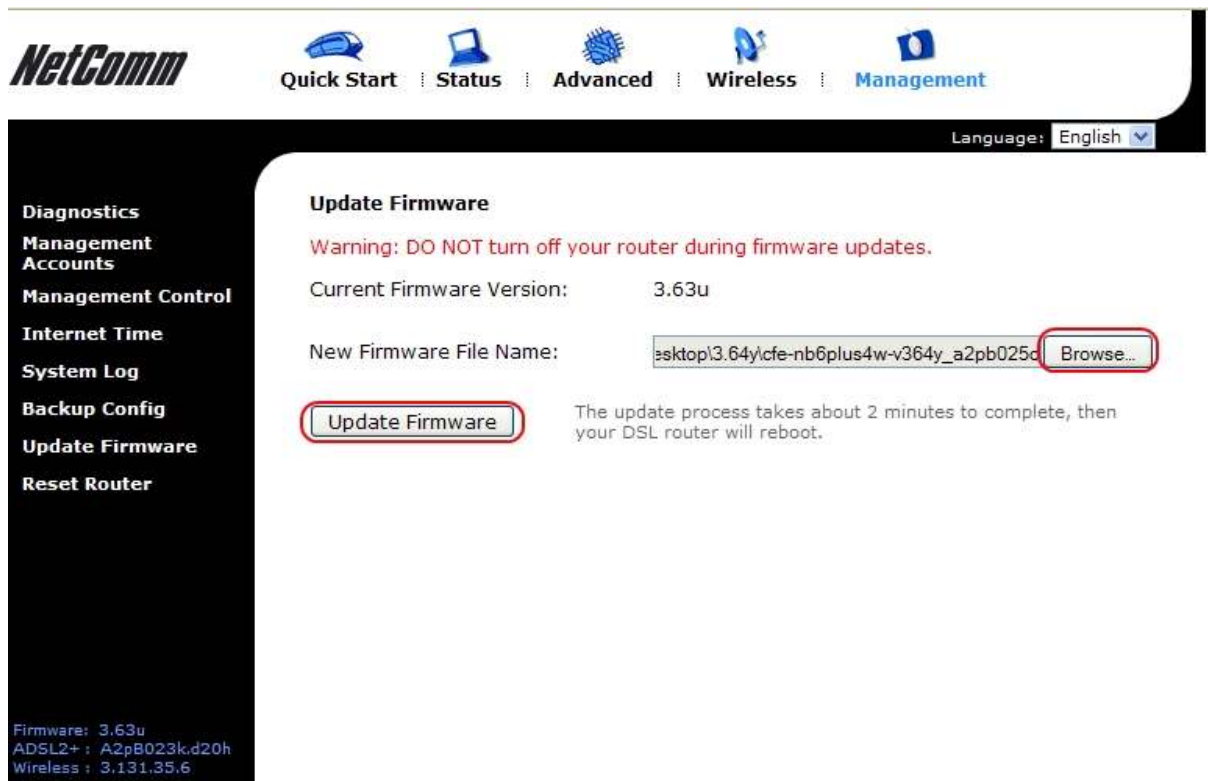
Upgrade Instructions

Please follow these steps to upgrade your NB6 Series ADSL2+ Modem Router (NB6/NB6W/NB6Plus4/ NB6Plus4W) firmware:

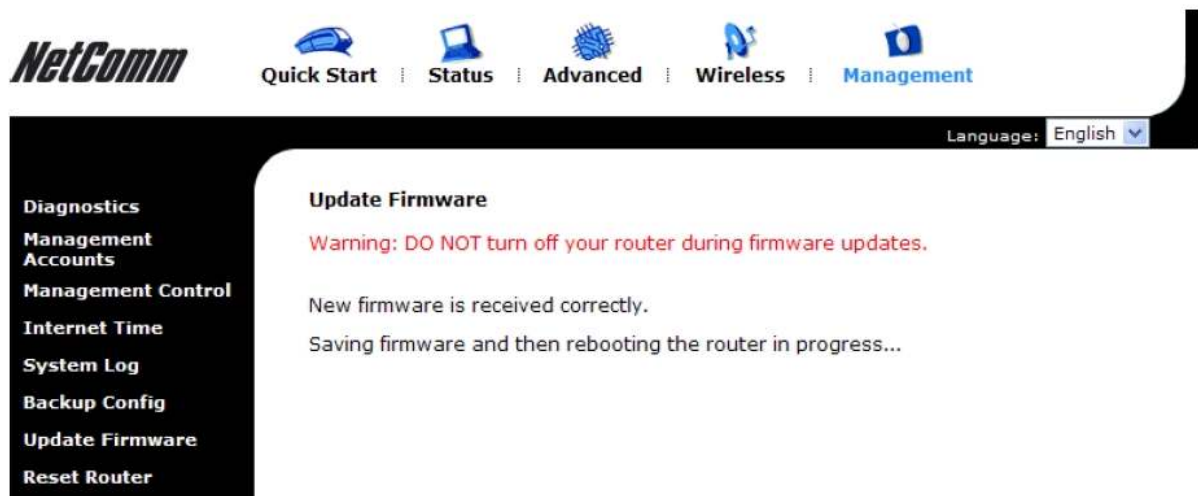
1. Connect to your NB6/NB6W/NB6Plus4/ NB6Plus4W using an Ethernet cable. It is advised that you do not perform the upgrade wirelessly.
2. Open a web browser (e.g. Internet Explorer) and enter <http://192.168.1.1> into the Address bar:



4. Click Browse and choose the corresponding NB6 series modem router's firmware binary file that you downloaded from NetComm's website and click Update Firmware:



5. The following page will display if the firmware has been accepted:



6. Wait for 2 minutes as your router saves the firmware and reboots.

NOTE: DO NOT DISCONNECT YOUR PC FROM THE MODEM or POWER THE NB6/NB6W/NB6Plus4/ NB6Plus4W OFF!

7. When the power light changes from Red to Green, the firmware update is complete.