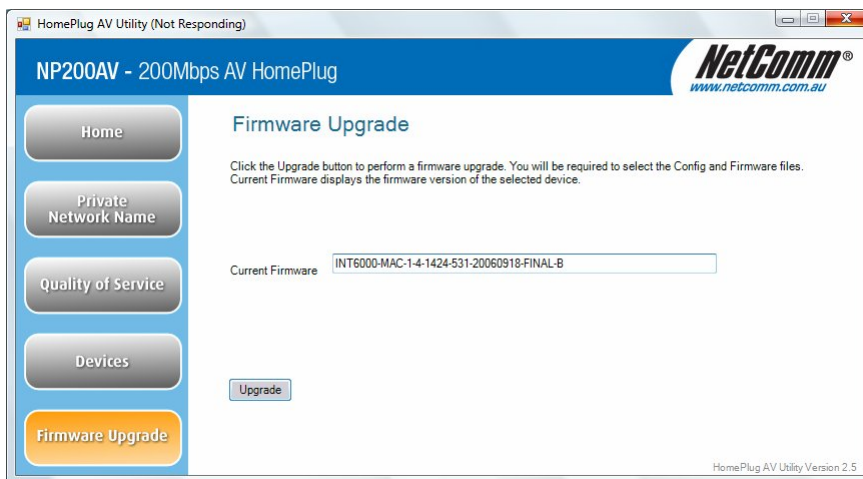


## NP200AV

### Firmware Upgrade Instructions 1.4 to 2.0

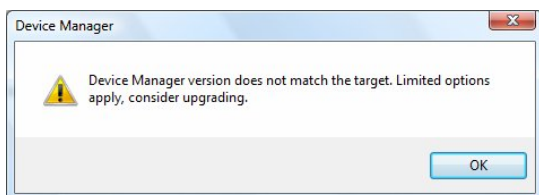
Please follow these steps to upgrade your NP200AV firmware from 1.4 to 2.0.

1. Connect to your NP200AV using an Ethernet cable.
2. Run setup.exe to install the utility (version 2.5).
3. Open the HomePlug AV Utility from the Start menu and select the Firmware Upgrade tab.

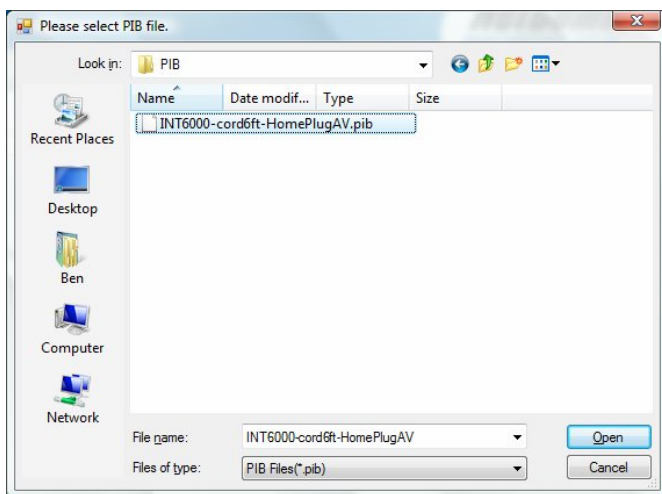


4. Check that the current firmware version is: INT6000-MAC-1-4-1424-531-20060918-FINAL-B

5. Select Upgrade.
6. If the following window appears, select OK.

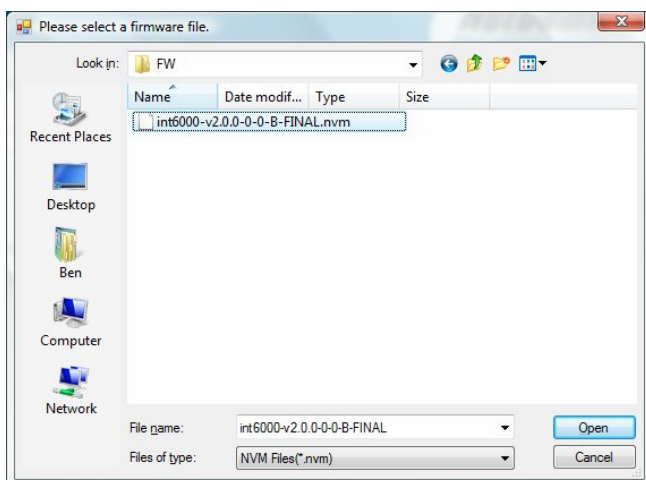


7. Browse and select the PIB file (located in 'NetComm NP200AV FW2.0.zip'): INT6000-cord6ft-HomePlugAV.pib

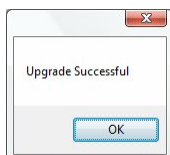


8. Select Open.

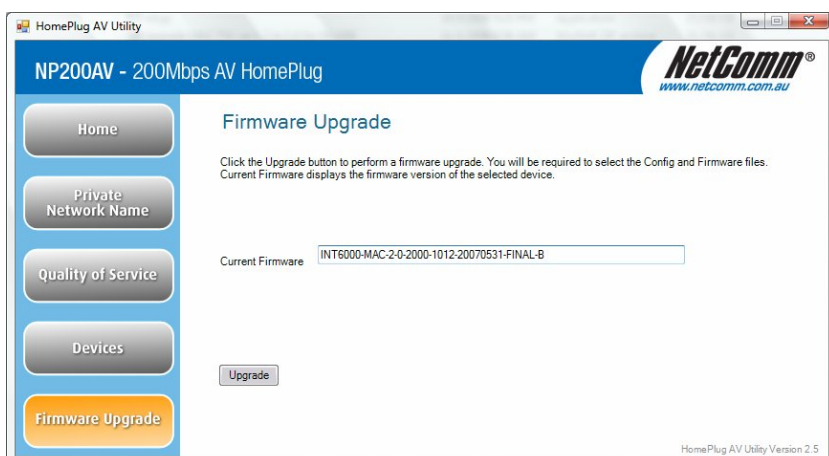
9. Browse and select the NVM file (located in 'NetComm NP200AV FW2.0.zip'): int6000-v2.0.0-0-0-B-FINAL.nvm



10. Select Open
11. The Upgrade Successful window should appear



12. Select OK, and wait a minute to verify that the current firmware is now: INT6000-MAC-2-0-2000-1012-20070531-FINAL-B



13. Done!