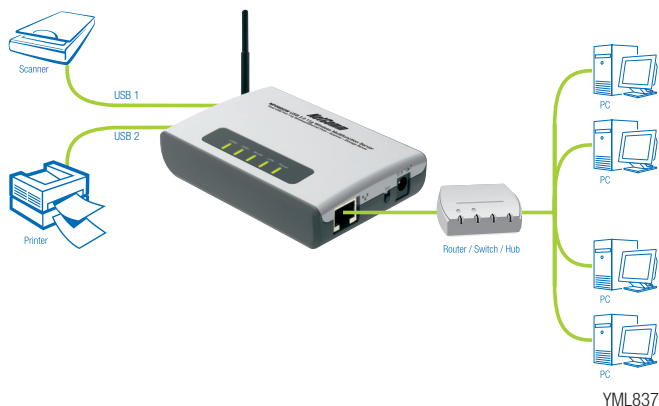




# Let's get started >

Note: Ensure that the drivers of your device (printer and/or scanner) are installed on your computer

## Step 1. Connect the NP3680W to Your Wired Network



# Install the Utility Software

1. Insert the included CD-ROM into your computer
2. The Autorun screen should appear. Follow the prompts to install the utility

# Set Up your Devices

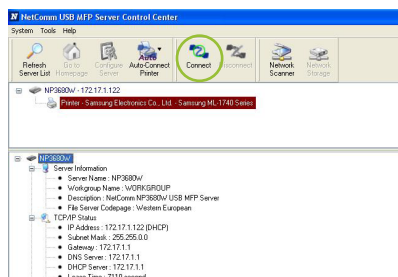


## Set up Printer

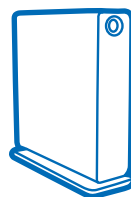
Make sure that your printer is connected to your NP3680W, and the printer drivers are installed

1. Click **Start**. Navigate to **All Programs > NetComm > MFP Server Control Centre** and click on **MFP Server Control Centre**

The following screen will appear



2. Select the printer from the list you want to connect
3. Click **connect** from the Tool bar to complete the set up

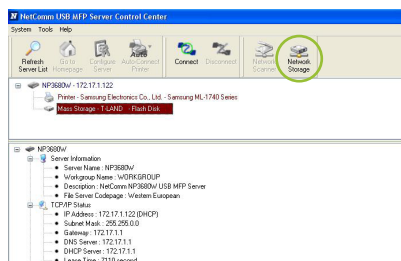


## Set up USB Storage Device

Make sure that your USB storage device is connected to your NP3680W

1. Click **Start**. Navigate to **All Programs > NetComm > MFP Server Control Centre** and click on **MFP Server Control Centre**

The following screen will appear



2. Then select your USB storage device
3. Click the **Network Storage Button** to complete the set up

For Advanced Set Up, including configuring your NP3680W, please refer to the NP3680W User Guide, located on the accompanying CD