

Starting your installation



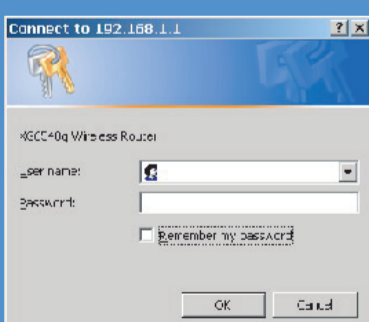
When you insert your NetComm CD, you can choose to use the **On-line Tutorial** to configure your Gateway or you can use this printed Quick Start Installation Guide.



Click on each **install topic** to help you install the Gateway.

Start from the first one and work your way down.

Default Setup



Management Utility:
<http://192.168.1.1>
User Name & Password:
 Enter
 User name: **admin**
 Password **admin**
 Then press **OK** to login.

How to Set back the default?

If you need to reset your NetComm NB620W Gateway back to factory defaults, use a ball pen or pencil to depress the reset button located on the back panel of your Gateway. Depress the reset button while powering on the Gateway and keep it depressed for at least 15 seconds. The gateway will restore factory defaults and restart again.

Introduction



NB620W Gateway



Thank you for choosing this NetComm Super G Wireless Gateway. Your gateway is pre-configured for easy installation. If you are not sure whether your Gateway has the default setup, please reset the unit back to factory defaults first. (Press the Reset button located on the back of the unit for 15 seconds while powering on).

Next make sure that you have installed your network adaptor properly. It will make the installation of this router easier and smoother. To connect the router to the Internet, please follow this guide or the tutorial on the CD.

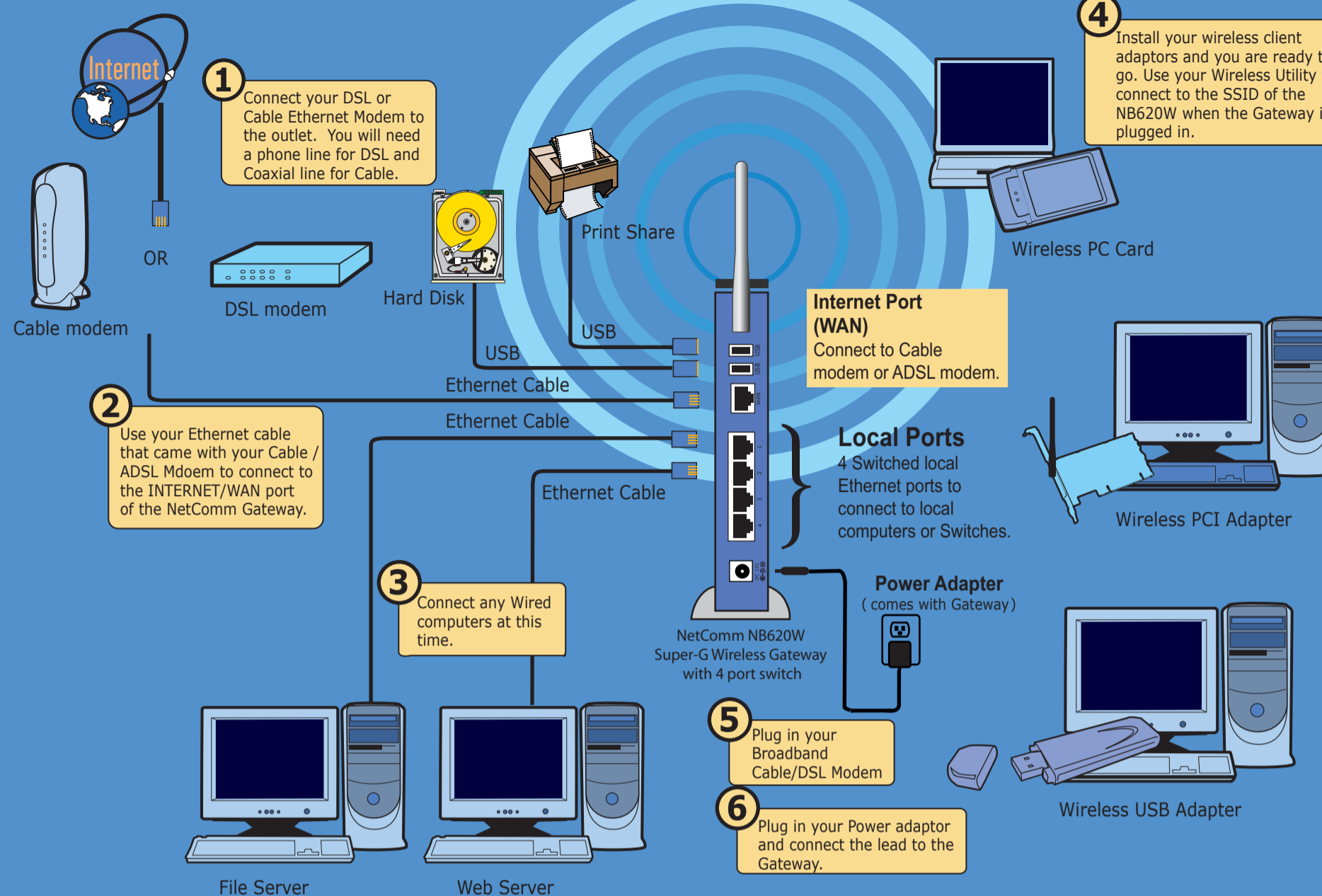
Check what type of Internet connection you have subscribed to. Ask your ISP for your User Name and Password. If you have a PPPoE service, please remove the PPPoE dial-up program from your computer.

Use this Quick Installation Guide to setup your Ethernet or Wireless network with an internet connection.

- 1. Network Installation**
To setup your hardware and wiring.
- 2. Configure your PC's**
Getting your PC ready. You will either need to install a new network adaptor, or you will need to check the configuration of an existing adaptor.
- 3. Configure the Gateway**
The gateway has a default setup for a cable modem connection. If you are using an ADSL connection, you will need to setup the ADSL settings in this Gateway with the information provided by your ISP.

Step 1 Network Installation

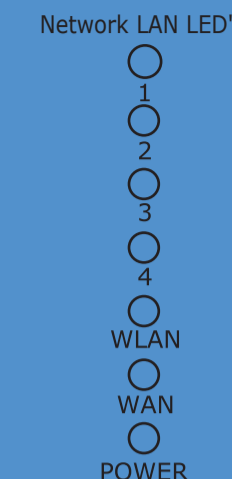
Products are not drawn in scale



Check your physical network

Now check the network indicator LED's to:

- Make sure that your Gateway is starting correctly.
- You have checked the Gateways LED indicators to see the network status.

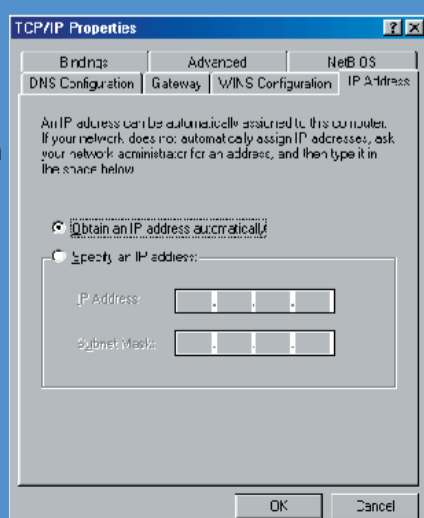
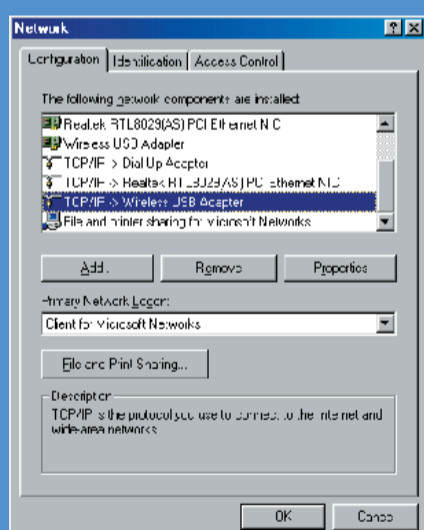


Function	Behavior	Definition
Power	Off	Power Off
	Green	Power On
WAN (Internet)	Off	WAN link absent or power off
	Green	Indicates ISP connection up
WLAN	Off	Wireless Link absent or off
	Green	Wireless link established
	Flashing	Wireless link data active
Network LAN LED's(1-4)	Off	LAN link absent or power off
	Green	100Mbps Ethernet link established
	Amber	10Mbps Ethernet link established
	Flashing	(Any Color) Ethernet link data active

Step 2 Configure your PCs

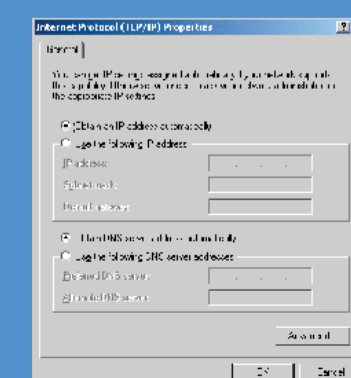
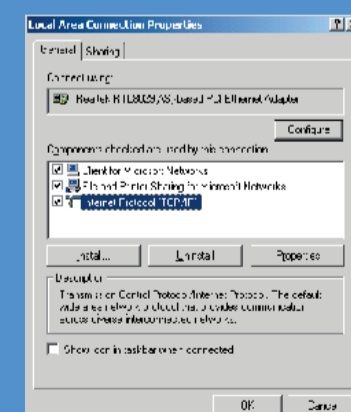
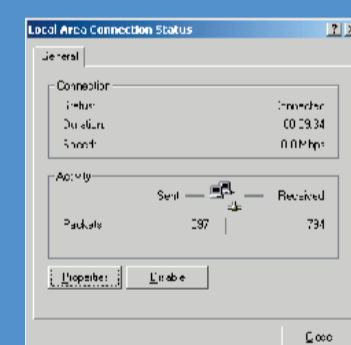
Windows 95/98/ME

- Open the **Control Panel** window by clicking **Start > Settings > Control Panel**. Then click on the **Network Icon**, the network control panel will appear.
- Click on the **Configuration Tab** to bring up the configuration screen. Select the Network components labeled TCP/IP by clicking on it. If you have multiple TCP/IP listings, make sure you select the one associated with your network adaptor, then click on the Properties button to bring up the TCP/IP Properties window.
- Select the **IP Address** tab to bring up the IP address setting dialog box. Select the - **Obtain an IP address automatically** function by checking the button.
- Next click on the **DNS Configuration** tab to bring up this dialog box. Select the - **Obtain an IP address automatically** function by checking the button.
- Click **OK** twice to confirm and save your changes.
- You will be prompted to restart your computer.



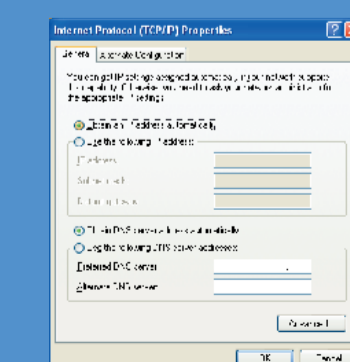
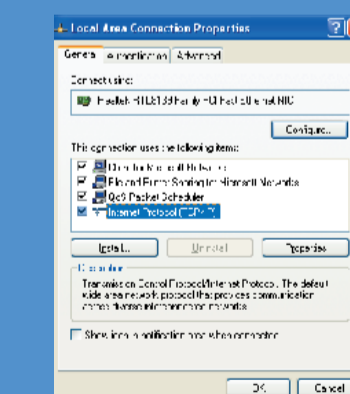
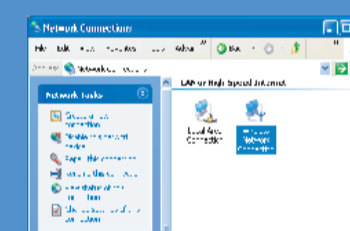
Windows 2000

- Open the **Control Panel** window by clicking **Start > Settings > Control Panel**. Then click on the **Network and Dial-up Icon**, the Network and Dial-up Connection window will appear.
- In **Network and Dial-up Connections** window, double-click the **Local Area Connection** icon.
- In the **Local Area Connection Properties** dialog box, select the **Internet Protocol (TCP/IP)** and then click on the **Properties** button to bring up the properties dialog box.
- In the **Internet Protocol (TCP/IP) Properties** dialog box, select the - **Obtain an IP address automatically** function by checking the button. Additionally, select the - **Obtain DNS server address automatically** function by clicking the button.
- Click **OK** twice to confirm and save your changes and close the **Control Panel**.

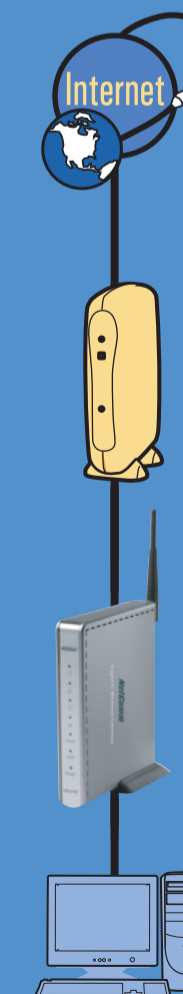


Windows XP (XP Interface)

- Open the **Control Panel** window by clicking **Start > Control Panel**. Then click on the **Network and Internet Connections** icon, and then Click **Network Connections** window will appear.
- In the **Network Connections** window, right click the **Local Area Connection** or the **Wireless Network Connection** icon, depending on which connection you are using for this computer, and select **Properties**.
- In the **Connection Properties** dialog box, select the **Internet Protocol (TCP/IP)** and then click on the **Properties** button to bring up the properties dialog box.
- In the **Internet Protocol (TCP/IP) Properties** dialog box, select the - **Obtain an IP address automatically** function by checking the button. Additionally, select the - **Obtain DNS server address automatically** function by clicking the button.
- Click **OK** twice to confirm and save your changes and close the **Control Panel**.



Restart Network



After you have completed your Network Installation and Gateway Configuration, you will need to restart your entire network to make sure the settings you have made take effect.

Please power down all network components waiting for at least 30 seconds, then:

- Power on your Cable/ADSL Modem. Wait until it has booted up.
- Power on the NB620W Gateway and wait until it has finished booting up.
- Power on your PC. During the boot-up process, your computer will sense the network changes and setup your new settings.


Login Management Utility

Open your browser (i.e. Internet Explorer or Netscape) and enter **192.168.1.1** for login.

Address:

Default settings are:
User Name is **admin**
Password is **admin**

Call your ISP for details on your Internet Connection



Your Gateway might need special settings that only your ISP can provide. Ask:

- Do I have a Dynamic IP, PPPoE, PPTP, Static IP or Other?
- Do I need a specific MAC Address to logon?
- Do I need a specific Domain Name, Host Name or DNS server?

For PPPoE: Get your Login/Password now.
For PPTP: Get you Login/Password and Server IP now.
For Static IP: Get your IP, Subnetmask, Gateway and DNS now.

After checking your Internet connection

You have two ways to setup your NetComm NB620W Gateway:
Using the Setup Wizard or Manually. Which way do you want to use?

Use our Setup Wizard:
Click here in the Gateway Management Utility, choose **Detect** and then follow the steps in the Internet browser screen. Press **Retry**, if the Wizard does not detect the Gateway the first time.



Or Configure Manually:
Use this option if you cannot use the Setup Wizard. Get your Internet Information from your ISP and use this Guide to help you enter it into the Gateway.

- For a Cable Modem User:
- Try your internet now. You need to know how to reset your cable modem. Power off the modem for 1 minute to reset your cable modem. Sometimes, you may need to reset your modem two or more times for it to reset. If you are unsure, please ask your ISP for details.
- For an ADSL User:
- You need to know which ADSL network you have: PPPoE, PPTP, Static Routing, or Dynamic. Ask your ISP for details.
 - PPPoE:** Most users have a PPPoE Connection. If you need to click a (dial-up) program before you get on line, or you have a user name and password with your account, you probably have a PPPoE network. You need to have your user name, password and optional parameters including IP, subnetmask, gateway, and DNS to setup the connection.
 - PPTP:** Similar to PPPoE. Has been used in Europe.
 - Static:** You need to have the IP address, subnetmask, gateway, and DNS IP's to setup the connection.
 - Dynamic:** Configuration is the same as with a cable modem.
- For a Corporate User:
- Contact your network administrator about the type of details you need for your corporate network.

I have an ADSL PPPoE Connection

PPPoE
Most domestic ADSL subscribers have a PPPoE DSL connection. Ask your ISP.
Warning: You must remove any PPPoE software installed in your computer before setup.

- Select PPPoE to enable your PPPoE connection.
- Enter the Domain, if your ISP requires it.
- Enter the user name and password given by your ISP.
- Enter the rest of these fields only if your ISP asks you to do so.
- Set it to 0 if you never want your Modem to disconnect from your ISP.
- Last Step
Click **SAVE** to save your change.

I have an ADSL PPTP Connection

PPTP
PPTP is a popular communication protocol used in Europe.

- Select PPTP to enable your PPTP connection.
- Enter the Domain, if your ISP requires it.
- Enter the user name and password given by your ISP.
- Enter the Server IP given by your ISP.
- Set it to 0 if you never want your Modem to disconnect from your ISP.
- Last Step
Click **SAVE** to save your change.

I have a Static Routing Connection

Static Routing
If your ISP or network manager gives you a fixed IP address, you need to set up Static Routing.

- Select Static Configuration to enable your Static connection.
- Enter all routing information to setup the static routing correctly.
- Last Step
Click **SAVE** to save your change.

Configure the Gateway 0 1 2 3 ok

I have a Dynamic IP connection:

Dynamic IP
Dynamic IP (DHCP) is the most common setup for Cable Broadband Subscribers. These steps will not be necessary if your ISP does not require specific settings.

- Select DHCP to enable your DHCP connection.
- Enable Domain Name or Host Name if required by ISP.
- Enable Static DNS and enter if required by ISP.
- Enter specific MAC address from ISP if required by ISP.
- Last Step
Click **SAVE** to save your change.

How to check your network

Network Utility - IPCONFIG, PING

How to check the network status on your PC?
The **IPCONFIG** is a pre-installed command line based tool in Microsoft Windows to list the network adaptors configured on your PC. Please open the command line window by clicking **Start > RUN**, and enter **command** for Windows 98/ME or enter **cmd** for Windows 2000/XP, then click **OK**.

In the command line window, type **IPCONFIG** and press enter. Your PC will list the status of your network cards on your PC. (For detailed usage, please type **IPCONFIG/?** and press enter for help.)

Is there a user friendly configuration tool?
A configuration tool with a graphical user interface is also available in Windows 98/ME and Windows XP.

Windows 98/ME
click **Start > RUN**, enter **winiipcfg**, then click **OK**.

Using Super-G

Using the Super-G modes:

- To use Super-G Mode at maximum speeds, you will need Super-G adapters (Gateway PC Cardbus, Gateway PCI Card) exclusively connected to your network.
- The router will have to be manually set to operate in this mode, accessible through the router's access page. The default operation mode for the Gateway is 54Mbps Mixed b/g mode.

To set Super-G operating modes:

- Access the Gateway at <http://192.168.1.1>
Default user name: admin Default password: admin (unless you've changed it)
- Click **Wireless LAN** in the left menu.
- Find **Operation Mode** and choose from:
 - Super-G Auto:** Allows 802.11b/g and Super-G adapters to connect at their best speeds. This can slow performance since the Gateway has to accommodate the slowest adapter.
 - Super-G Only:** Only Super-G adapters can connect to or detect the Gateway in this mode. This ensures the best Super-G performance.
 - 802.11 b/g Mixed:** Allows 802.11b/g devices to connect at their best speeds. Super-G adapters will connect at 54Mbps.
 - 802.11b Only:** Allows all 802.11b/g devices to connect at 11Mbps
- Press **Save** to save changes made to the Gateway.

Super-G Wireless Adapter will automatically connect at maximum speed when they connect to a Super G enabled Gateway. No further setup on the adapter is necessary.



NP620W Super-G Wireless Gateway



NetComm™
Broadband Solutions

NetComm Limited
ABN 85 002 490 486
Unit 1, 2-6 Orion Rd
Lane Cove NSW 2066
AUSTRALIA

Telephone: (02) 9424 2000
Facsimile: (02) 9424 2010

www.netcomm.com.au

NetComm Tech Support Center

Website: www.netcomm.com.au
Tech Support Email: support@netcomm.com.au
Sales Email: sales@netcomm.com.au