



Increase Wireless Reception
(NB604n)

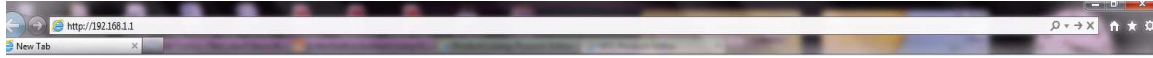
Increasing your wireless reception

If you are experiencing wireless reception drop outs or disconnections, another wireless network or device may be broadcasting on the same wireless channel as your own network.

You can usually resolve this by changing the wireless channel in use on your network.

This guide will take you through the steps required to change the wireless channel in use.

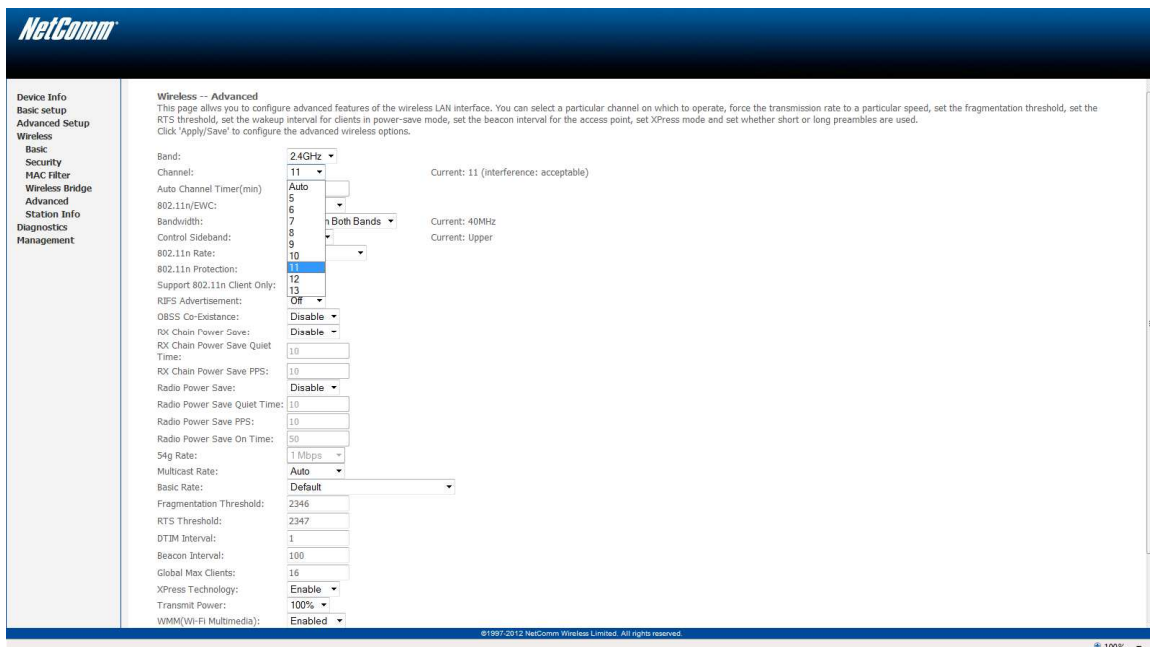
1. Open your web browser and navigate to the site <http://192.168.1.1>



2. Use "admin" (without the quotes) as the username and "admin" (without the quotes) as the password.



3. Click on Wireless on the left-hand menu and then click on Advanced.



4. Click on the **Channel** drop down menu and select a channel number at the opposite end of the scale to your current channel.
5. Click **Apply/Save** to allow changes to take effect.



If you are still experiencing wireless reception issues, there may be infrastructure (walls, floors, wiring, etc) impeding your wireless signal. Please try moving the wireless device to a position close to your modem / router and try connecting again.