



- ⑦ NetComm's NP2624M Switch provides 24 x 10/100Mbps Ethernet ports with an additional 2 pairs of 1000Mbps Gigabit Ethernet and mini-GBIC Fibre ports.
- ⑦ SNMP Layer 2 Remote Managed Switch.
- ⑦ Easy configuration and management through either a Web Browser GUI or serial CLI.
- ⑦ Supports both Port-based and Tag-based VLANs.
- ⑦ Complete with Auto-Negotiation and Auto-MDIX on all ports.
- ⑦ Easy access design with full LED status display at front for rack mounting.

The NP2624M switch is a high performance SNMP or web-managed Layer 2 switch that provides users with 24 x 10/100Mbps Ethernet and 2 x 1000Mbps (Gigabit) or mini-GBIC Fibre ports. The Gigabit ports are available for copper or fibre media, supports 1000BASE-SX, 1000BASE-LX or 1000BASE-T, allows users to increase their network response time at gigabit speeds and with great flexibility. An RS-232 serial port provides another easy way to install and manage the Switch.

The NP2624M supports Auto-Negotiation and Auto-MDIX function on all ports eliminating any confusion over straight or twisted ethernet cabling issues.

The User-friendly web browser interface features drop-down menus to allow the user to easily learn, control and monitor the Switch. It supports not only traditional SNMP function, but also RMON 1,2,3,9 groups for advanced

network analysis. A new management tool called "Single IP" provides the administrator with the ability to enter the private IP domain through a single real IP address, enabling remote management of the NP2624M.

The Switch also supports both Port-based and Tag-based VLANs. To increase bandwidth application, it supports 7 groups with up to 4 Trunk ports, including a fail-over and back up function if one or more ports malfunction. Stacking mode enhances the VLAN capability and an integrated GUI not only displays the link status of the stacking sets, but also provides an easy way to set up VLANs.

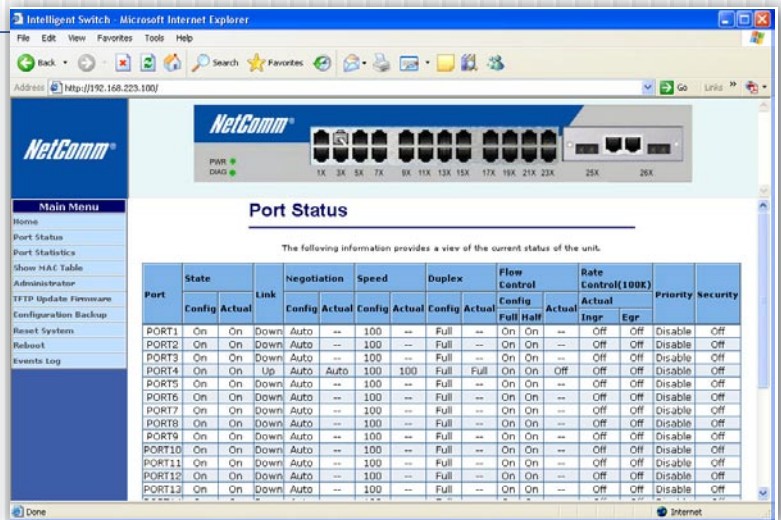
The front access design of the NP2624M displays LED status and provides easy installation, inspection and maintenance in rack mounted environments. An additional LED displays the fan status allowing for a quick diagnosis of any over-heating.

NP2624M VLAN-Tag Managed Switch

24 x 10/100Mbps Ethernet Ports plus 2 x Gigabit ports

KEY FEATURES

- Web/SNMP managed function with friendly user interface
- Non-blocking, full-line speed, store-and-forward, with a maximum packet length of 1568 bytes
- Auto-Negotiation and Auto-MDIX on all copper ports (10/100/1000)
- Stackable 24x10/100 RJ-45 ports, and 2 gigabit RJ-45 and mini-GBIC ports with auto-detection
- LED display for each port status: link, activity and speed
- 3Mb packet buffer and 1Mb control buffer
- Supports flow control for half or full-duplex operation
- Supports Head-of-Line blocking prevention and broadcast storm filtering
- Includes port-based VLAN and supports 802.1Q tag-based VLAN, 802.1v protocol-based VLAN classification and 802.1x Authentication and Authorisation
- Supports IP Multicast, IGMP snooping, STP and RSTP
- Supports Port-Trunking with flexible load distribution control and fail-over functions with 7 trunk groups of up to 4 member ports.



- Supports ingress port security mode Egress/Ingress rate control
- Supports up to 255 Static MAC entries
- Supports RMON group 1,2,3,9
- Remote management from a single IP
- 1 year warranty. Register online at www.netcomm.com.au

TECHNICAL SPECIFICATIONS

Standards compliance

- IEEE 802.3 10BaseT Ethernet
- IEEE 802.3u 100BaseTX Fast Ethernet
- IEEE 802.3z 1000BaseSX/LX Gigabit Ethernet
- IEEE 802.3x flow control
- IEEE 802.1D Spanning Tree
- IEEE 802.1q Tag-based VLAN, Priority Control
- IEEE 802.1v protocol-based VLAN
- IEEE 802.1x Authentication and Authorisation

Interfaces

- 24 x 10/100 BaseTX RJ-45 STP ethernet ports (switched ports)
- 2 x 10/100/1000BaseTX RJ-45 or mini-GBIC ports,
- 1 x RS232 connector for initial set-up

Buffer Memory

- 1Mb for control, 3Mb for packet buffers
- 6K entries for MAC
- 4K entries for VLAN

Packet Forwarding and Filtering Rates

- 1000M ethernet: 1488100 packets per second per port
- 100M ethernet: 148810 packets per second per port
- 10M ethernet: 14880 packets per second per port

Environment

- Operation temperature: 5 to 45 centigrade
- Operating humidity: 10%-90%, non-condensing
- Storage temperature: -20 to 70 centigrade

LED Panel Display

- 1 power LED: Green (normal),
- 1 self-diagnostic LED: Blinking during power-on-diagnostics
- Port LEDs: 1~ 24 ports, left corner of each RJ-45 port, Green (Link ok), Blinking (Activity)
- Speed LEDs: 1 ~ 24 ports, right corner of each RJ-45 port, Green (100M), Yellow (10M)
- Gigabit port LEDs: Green (1000M link ok), Blinking (Activity)

Power

- Input: 100-240VAC, 50/60Hz,
- Power Consumption: 30 Watts max.

Dimensions

- Width: 440mm
- Depth: 184mm
- Height: 44mm

Weight :

- 2.5 kg

Electromagnetic Emissions

- Class A

Approvals

- C-Tick, N367

Safety:

- CB (optional)

Package Contents

- NP2624M port Fast Ethernet Layer 2 Switch
- Mounting Kit including 2 mounting brackets and screws
- Four rubber feet with adhesive backing
- AC power cord
- RS-232 cable
- CD ROM

Your NetComm dealer:

NetComm[®]
Broadband Solutions

SHARE THE  EXPERIENCE

NETCOMM LIMITED ABN 85 002 490 486 PO Box 1200, Lane Cove NSW 2066 Australia

P: 02 9424 2070 F: 02 9424 2010 E: sales@netcomm.com.au W: www.netcomm.com.au

Trademarks and registered trademarks are the property of NetComm Limited or their respective owners. Specifications are subject to change without notice. Images shown may vary slightly from the actual product.