



NetComm NP740n
11n Wireless Router

PWR WLAN WAN LAN 1 2 3 4 10/100M
LNK/ACT

NP740N

11n Wireless Broadband Router

Contents

CHAPTER I: PRODUCT INFORMATION	5
1-1 Introduction	5
1-2 Safety Information	6
1-3 System Requirements	6
1-4 Package Contents	6
1-5 Familiarise yourself with your new wireless broadband router	7
CHAPTER II: SYSTEM AND NETWORK SETUP	9
2-1 Build network connection.....	9
2-2 Connecting to wireless broadband router by web browser.....	11
2-2-1 Windows 95/98/Me IP address setup	11
2-2-2 Windows 2000 IP address setup	12
2-2-3 Windows XP IP address setup	13
2-2-4 Windows Vista IP address setup	14
2-2-5 Router IP address lookup	15
2-3 Using 'Quick Setup'	17
2-3-1 Setup procedure for 'Cable Modem'	19
2-3-2 Setup procedure for 'Fixed-IP xDSL'	19
2-3-3 Setup procedure for 'PPPoE xDSL'	20
2-3-4 Setup procedure for 'PPTP xDSL'	21
2-3-5 Setup procedure for 'L2TP xDSL'	22
2-3-6 Setup procedure for 'L2TP'	23
2-3-7 Setup procedure for 'Telstra Big Pond'	24
2-4 Basic Setup	25
2-4-1 Time zone and time auto-synchronization	25
2-4-2 Change management password	26
2-4-3 Remote Management	27
2-5 Setup Internet Connection (WAN Setup).....	28
2-5-1 Setup procedure for 'Dynamic IP'	29
2-5-2 Setup procedure for 'Static IP'	30
2-5-3 Setup procedure for 'PPPoE'	31
2-5-4 Setup procedure for 'PPTP'	32
2-5-5 Setup procedure for 'L2TP'	34
2-5-6 Setup procedure for 'Telstra Big Pond'	35
2-5-7 Setup procedure for 'DNS'	36
2-5-7 Setup procedure for 'DDNS'	37
2-6 Wired LAN Configuration	38
2-6-1 LAN IP section	39
2-6-2 DHCP Server.....	40
2-6-3 Static DHCP Leases Table	41
2-7 Wireless LAN Configuration.....	42
2-7-1 Basic Wireless Settings	43
2-7-1-1 Setup procedure for 'AP'	44
2-7-1-2 Setup procedure for 'AP Bridge - Point to Point'	45
2-7-1-3 Setup procedure for 'AP Bridge - Point to Multi Point'	46

2-7-1-4 Setup procedure for 'AP Bridge - WDS'	47
2-7-2 Advanced Wireless Settings	48
2-7-3 Wireless Security.....	50
2-7-3-1 Disable wireless security	50
2-7-3-2 WEP - Wired Equivalent Privacy	50
2-7-3-3 Wi-Fi Protected Access (WPA)	52
2-7-3-4 WPA RADIUS	53
2-7-4 Wireless Access Control	54
2-7-5 Wi-Fi Protected Setup (WPS).....	55
2-7-6 Security Tips for Wireless Network.....	56
CHAPTER III: ADVANCED FUNCTIONS	57
3-1 Quality of Service (QoS)	57
3-1-1 Basic QoS Settings.....	58
3-1-2 Add a new QoS rule.....	59
3-2 Network Address Translation (NAT)	60
3-2-1 Basic NAT Settings (Enable or disable NAT function)	60
3-2-2 Port Forwarding	61
3-2-3 Virtual Server	62
3-2-4 Port Mapping for Special Applications.....	63
3-2-5 UPnP Setting	63
3-2-6 ALG Settings.....	64
3-3 Firewall	65
3-3-1 Access Control.....	66
3-3-1-1 Add PC	68
3-3-2 URL Blocking	69
3-3-3 DoS Attack Prevention	70
3-3-3-1 DoS - Advanced Settings.....	71
3-3-4 Demilitarized Zone (DMZ)	72
3-4 System Status.....	73
3-4-1 System information and firmware version	73
3-4-2 Internet Connection Status.....	73
3-4-3 Device Status.....	74
3-4-4 System Log	74
3-4-5 Active DHCP client list	75
3-4-6 Statistics	76
3-5 Configuration Backup and Restore	77
3-6 Firmware Upgrade	78
3-7 System Reset.....	79
CHAPTER IV: APPENDIX	80
4-1 Hardware Specification.....	80
4-2 Troubleshooting.....	81
4-3 Glossary	83
4-4 Legal and Regulatory Information	86
Customer Information.....	86
Product Warranty	87
Limitations of Warranty.....	87

CHAPTER I: PRODUCT INFORMATION

1-1 Introduction

Thank you for purchasing this wireless broadband router! This high cost-efficiency router is the best choice for Small office / Home office users, all computers and network devices can share a single xDSL / cable modem internet connection at high speed. Easy install procedures allows any computer users to setup a network environment in very short time - within minutes, even inexperienced. When the number of your computers and network-enabled devices grow, you can also expand the number of network slot by simple attach a hub or switch, to extend the scope of your network!

With built-in IEEE 802.11b/g/Draft-N wireless network capability, all computers and wireless-enabled network devices (including PDA, cellular phone, game console, and more!) can connect to this wireless router without additional cabling. New Draft-N wireless capability also gives you the highest speed of wireless experience ever! With a compatible wireless card installed in your PC, you can transfer file for up to 300Mbps (transfer data rate)! The radio coverage is also doubled, so don't worry if your office or house is really big!

Other features of this router include:

- High Internet Access throughput
- Allow multiple users to share a single Internet line
- Supports up to 253 users
- Share a single Cable or xDSL internet connection
- Access private LAN servers from the internet
- Four wired LAN ports (10/100M) and one WAN port (10/100M)
- Provides IEEE 802.11b/g/Draft-N wireless LAN capability
- Support DHCP (Server/Client) for easy IP-address setup
- Advanced network and security features like: Special Applications, DMZ, Virtual Servers, Access Control, Firewall.
- Allow you to monitor the router's status like: DHCP Client Log, System Log, Security Log and Device/Connection Status
- Easy to use Web-based GUI for network configuration and management purposes
- Remote management function allows configuration and upgrades from a remote computer (over the Internet)
- Auto MDI / MDI-X function for all wired Ethernet ports.

1-2 Safety Information

In order to keep the safety of users and your properties, please follow the following safety instructions:

1. This router is designed for indoor use only; DO NOT place this router outdoor.
2. DO NOT put this router at or near hot or humid places, like kitchen or bathroom. Also, do not left this router in the car in summer.
3. DO NOT pull any connected cable with force; disconnect it from the router first.
4. If you want to place this router at high places or hang on the wall, please make sure the router is firmly secured. Falling from high places would damage the router and its accessories, and warranty will be void.
5. Accessories of this router, like antenna and power supply, are danger to small children under 3 years old. They may put the small parts in their nose or month and it could cause serious damage to them. **KEEP THIS ROUTER OUT THE REACH OF CHILDREN!**
6. The router will become hot when being used for long time (This is normal and is not a malfunction), DO NOT put this router on paper, cloth, or other flammable materials.
7. There's no user-serviceable part inside the router. If you found that the router is not working properly, please contact your dealer of purchase and ask for help. DO NOT disassemble the router, warranty will be void.
8. If the router falls into water when it's powered, DO NOT use your hand to pick it up. Switch the electrical power off before you do anything, or contact an experienced technician for help.
9. If you smell something strange, or even see some smoke coming out from the router or power supply, remove the power supply or switch the electrical power off immediately, and call dealer of purchase for help.

1-3 System Requirements

- Internet connection, provided by xDSL or cable modem with a RJ-45 Ethernet port.
- Computer or network devices with wired or wireless network interface card.
- Web browser (Microsoft Internet Explorer 4.0 or above, Netscape Navigator 4.7 or above, Opera web browser, or Safari web browser).
- An available AC power socket (100 – 240V, 50/60Hz)

1-4 Package Contents

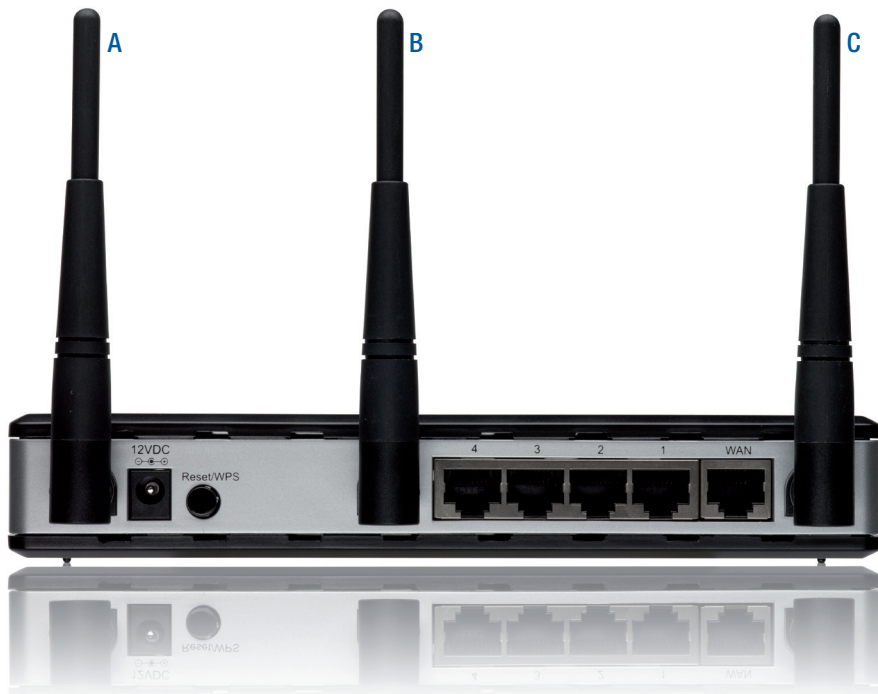
If any of the following items are missing or damaged, please contact your local reseller for replacement.

- NP740N 11n Wireless Router
- Vertical Stand
- This printed Quick Start Guide
- CDROM containing User Guide (in PDF Format - PDF Reader software is included)
- 12VDC 1A Power Supply

1-5 Familiarise yourself with your new wireless broadband router



LED Name	Light Status	Description
PWR	ON	Router is switched on and correctly powered
WLAN	On	Wireless network is switched on or WPS mode is on.
	Off	Wireless network is switched off
	Flashing	Wireless LAN activity (transferring data).
WAN 10/100M	On	WAN port (Internet) is running at 100Mbps
	Off	WAN port (Internet) is running at 10Mbps
	Flashing	WAN activity (transferring data)
WAN LNK/ACT	On	WAN port is connected
	Off	WAN port is not connected
	Flashing	WAN activity (transferring data)
LAN 10/100M	On	LAN port is running at 100Mbps
	Off	LAN port is running at 10Mbps
LAN LNK/ACT	On	LAN port is connected
	Off	LAN port is not connected
	Flashing	LAN activity (transferring data)



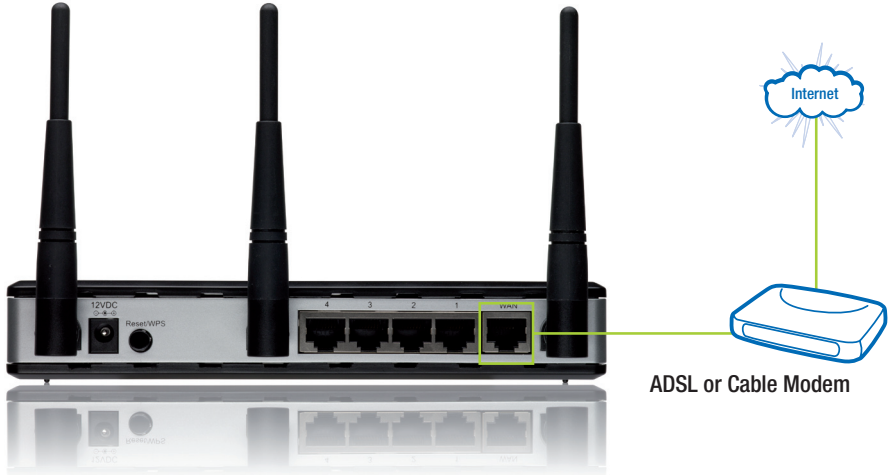
Item Name	Description
Antenna A to C	Antenna A, B, and C
12VDC/Power	Power connector, connects to A/C power adapter
Reset / WPS	Reset the router to factory default settings (clear all settings) or start WPS function. Press this button and hold for 20 seconds to clear all settings, and press this button for less than 20 seconds to start WPS function.
1 - 4	Local Area Network (LAN) ports 1 to 4
WAN	Wide Area Network (WAN / Internet) port

CHAPTER II: SYSTEM AND NETWORK SETUP

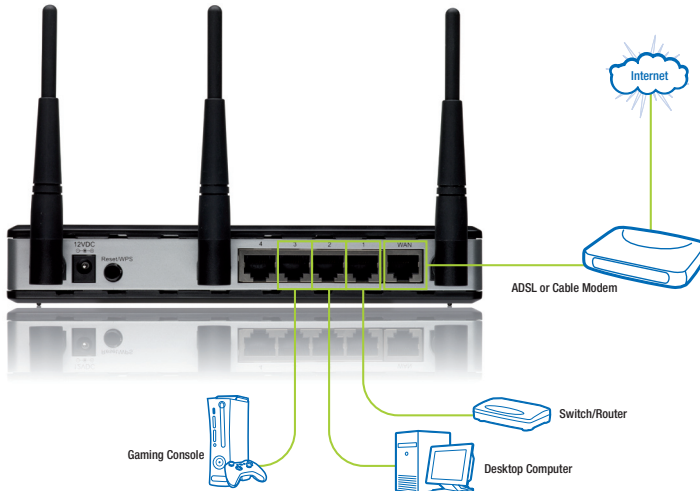
2-1 Build network connection

Please follow the instructions below to setup your wireless router:

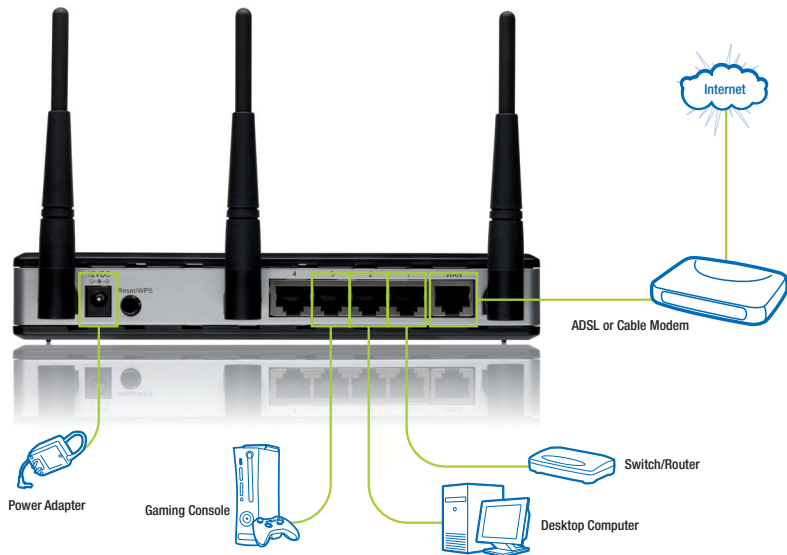
1. Connect your xDSL / cable modem to the WAN port of router by Ethernet cable.



2. Connect all your computers, network devices (network-enabled consumer devices other than computers, like game console, or switch / hub) to the LAN ports (1-4) of the router.



3. Connect the A/C power adapter to the wall socket, and then connect it to the 'Power' socket of the router.



4. Please check all LEDs on the front panel. 'PWR' LED should be steadily on, WAN and LAN LEDs should be on if the computer / network device connected to the respective port of the router is powered on and correctly connected. If PWD LED is not on, or any LED you expected is not on, please recheck the cabling, or jump to '4-2 Troubleshooting' for possible reasons and solution.

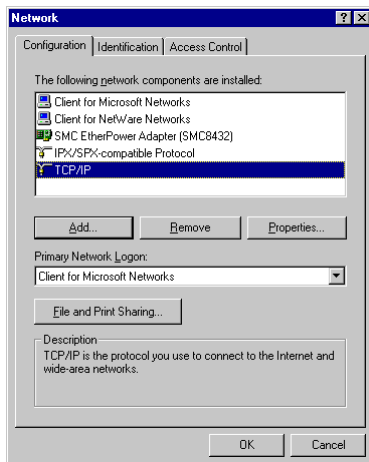
2-2 Connecting to wireless broadband router by web browser

After the network connection is built, the next step you should do is setup the router with proper network parameters, so it can work properly in your network environment.

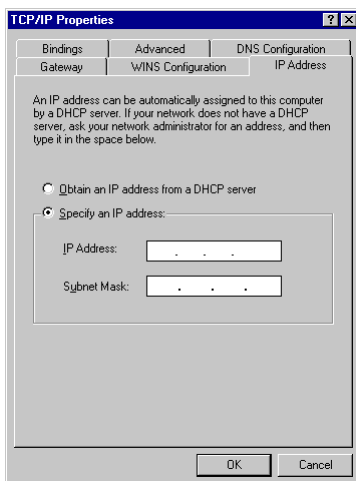
Before you can connect to the router and start configuration procedures, your computer must be able to get an IP address automatically (use dynamic IP address). If it's set to use static IP address, or you're unsure, please follow the following instructions to configure your computer to use dynamic IP address:

2-2-1 Windows 95/98/Me IP address setup:

1. Click 'Start' button (it should be located at lower-left corner of your computer), then click control panel. Double-click Network icon, and Network window will appear. Select 'TCP/IP', then click 'Properties'.

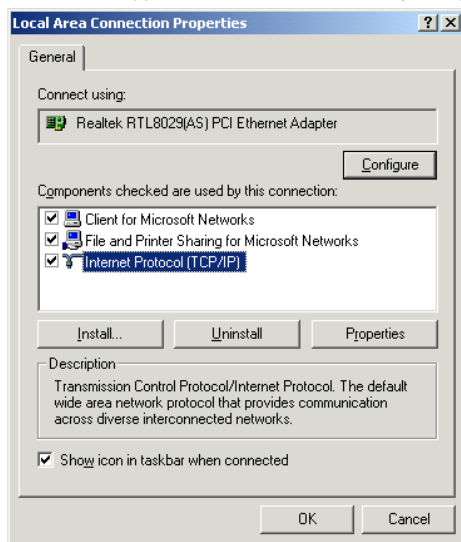


2. Select 'Obtain an IP address from a DHCP server', then click 'OK'.

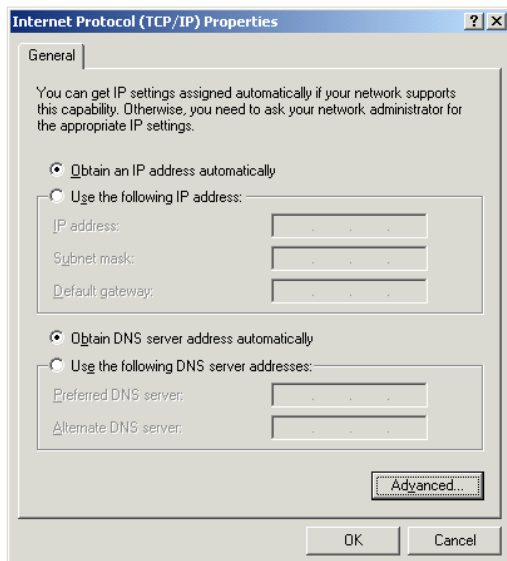


2-2-2 Windows 2000 IP address setup:

1. Click 'Start' button (it should be located at lower-left corner of your computer), then click control panel. Double-click Network and Dial-up Connections icon, double click Local Area Connection, and Local Area Connection Properties window will appear. Select 'Internet Protocol (TCP/IP)', then click 'Properties'

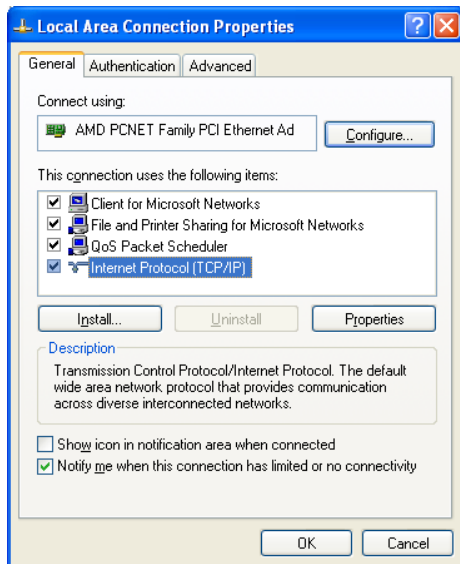


2. Select 'Obtain an IP address automatically' and 'Obtain DNS server address automatically', then click 'OK'.

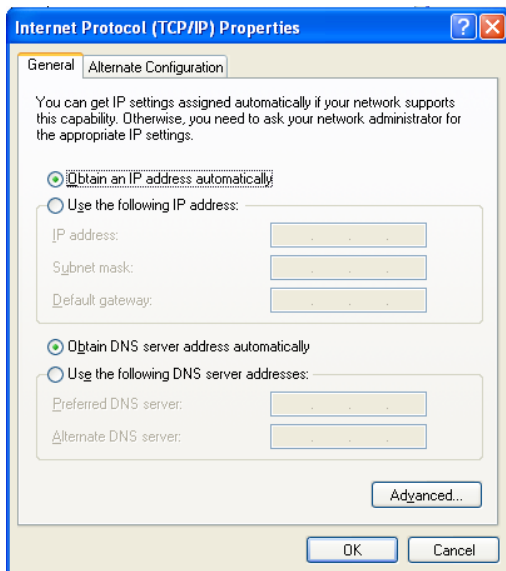


2-2-3 Windows XP IP address setup:

1. Click 'Start' button (it should be located at lower-left corner of your screen), then click Control Panel. Double-click Network and Internet Connections icon, click Network Connections, then double-click Local Area Connection, Local Area Connection Status window will appear, and then click 'Properties'

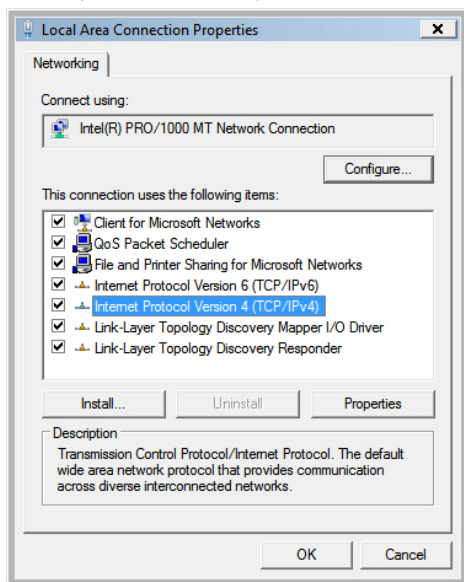


2. Select 'Obtain an IP address automatically' and 'Obtain DNS server address automatically', then click 'OK'.

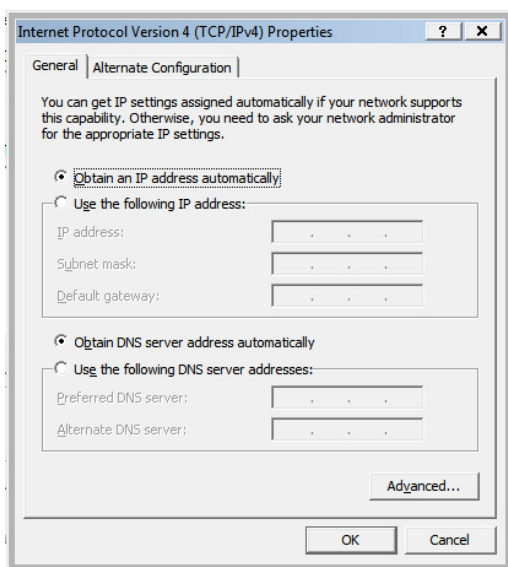


2-2-4 Windows Vista IP address setup:

1. Click 'Start' button (it should be located at lower-left corner of your computer), then click control panel. Click View Network Status and Tasks, then click Manage Network Connections. Right-click Local Area Network, then select 'Properties'. Local Area Connection Properties window will appear, select 'Internet Protocol Version 4 (TCP / IPv4)', and then click 'Properties'

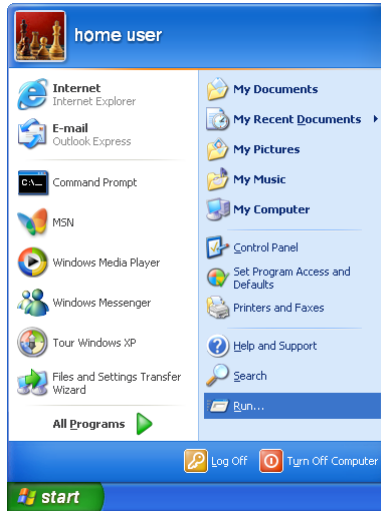


2. Select 'Obtain an IP address automatically' and 'Obtain DNS server address automatically', then click 'OK'.

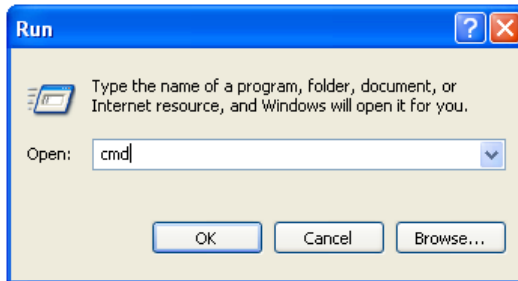


2-2-5 Router IP address lookup

After the IP address setup is complete, please click 'start' -> 'run' at the bottom-lower corner of your desktop:



Input 'cmd', then click 'OK'



Input 'ipconfig', then press 'Enter' key. Please check the IP address followed by 'Default Gateway' (In this example, the IP address of router is 192.168.1.1, please note that this value may be different.)

```
C:\Documents and Settings\home user>ipconfig

Windows IP Configuration

Ethernet adapter Local Area Connection:

    Connection-specific DNS Suffix  . : 
    IP Address. . . . .               : 192.168.1.2
    Subnet Mask . . . . .             : 255.255.255.0
    Default Gateway . . . . .         : 192.168.1.1

C:\Documents and Settings\home user>_
```

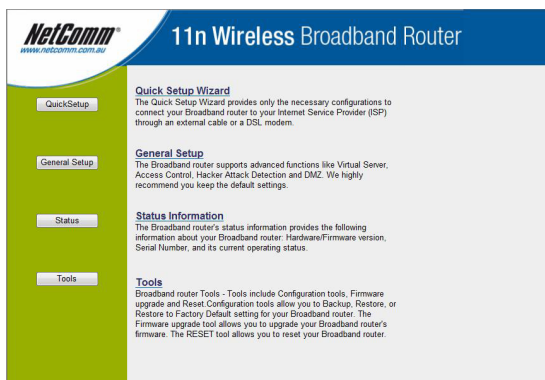
NOTE: If the IP address of Gateway is not displayed, or the address followed by 'IP Address' begins with '169', please recheck network connection between your computer and router, and / or go to the beginning of this chapter, to recheck every step of network setup procedure.

Connect the router's management interface by web browser

After your computer has obtained an IP address from the router, please start your web browser, and input the router IP address (default: 192.168.1.1) in the address bar. The following message should be shown:



Please input user name and password in the field respectively, default user name is 'admin', and default password is 'admin', then press 'OK' button, and you can see the web management interface of this router:



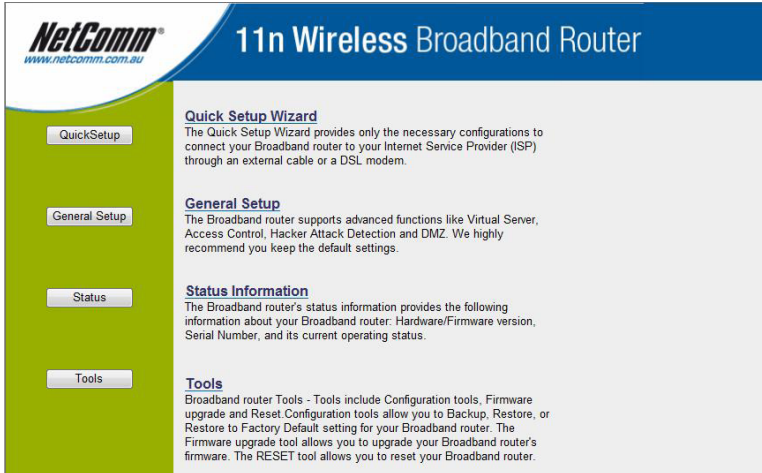
NOTE: If you can't see the web management interface, and you're being prompted to input user name and password again, it means you didn't input username and password correctly. Please retype user name and password again. If you're certain about the user name and password you type are correct, please go to '4-2 Troubleshooting' to perform a factory reset, to set the password back to default value.

TIP: This page shows the four major setting categories: QuickSetup, General Setup, Status, and Tools. You can find the shortcut which leads to these setting categories at the upper-right corner of every page, and you can jump to another category directly by clicking the link, and don't have to go back to the first page.

2-3 Using 'Quick Setup'

This router provides a 'Quick Setup' procedure, which will help you to complete all required settings you need to access the Internet in very short time. Please follow the following instructions to complete the 'Quick Setup':

Please go to QuickSetup menu by clicking 'QuickSetup' button.



And the following message will be displayed:

1. Set Time Zone

Set Time Zone :	(GMT-06:00)Central Time (US & Canada) ▾
Time Server Address :	192.43.244.18
Daylight Savings :	<input checked="" type="checkbox"/> Enable Function Times From January ▾ 1 ▾ To January ▾ 1 ▾
Next	

Here are descriptions of every setup items:

Set Time Zone:	Please press ▾ button, a drop-down list will be shown, and you can choose a time zone of the location you live.
Time Server Address:	Input the IP address / host name of time server here
Daylight Savings:	If the country you live uses daylight saving, please check 'Enable Function' box, and choose the duration of daylight saving.

After you finish with all settings, please click 'Apply' button.

NOTE: There are several time servers available on internet:

- 129.6.15.28 (time-a.nist.gov)
- 132.163.4.101 (time-a.timefreq.bldrdoc.gov)
- 131.107.1.10 (time-nw.nist.gov)

If you found that the time of router is incorrect, try another time server.

2. Broadband Type

Broadband Type

Specify the WAN connection type required by your Internet Service Provider. Specify a Cable modem, Fixed-IP xDSL, PPPoE xDSL or PPTP xDSL connection.

[Cable Modem](#)

A connection through a cable modem requires minimal configuration. When you set up an account with your Cable provider, the Cable provider and your Broadband router will automatically establish a connection, so you probably do not need to enter anything more.

[Fixed-IP xDSL](#)

Some xDSL Internet Service Providers may assign a Fixed IP Address for your Broadband router. If you have been provided with this information, choose this option and enter the assigned IP Address, Subnet Mask, Gateway IP Address and DNS IP Address for your Broadband router.

[PPPoE xDSL](#)

If you connect to the Internet using an xDSL Modem and your ISP has provided you with a Password and a Service Name, then your ISP uses PPPoE to establish a connection. You must choose this option and enter the required information.

[PPTP xDSL](#)

If you connect to the Internet using an xDSL Modem and your ISP has provided you with a Password, Local IP Address, Remote IP Address and a Connection ID, then your ISP uses PPTP to establish a connection. You must choose this option and enter the required information.

Please choose the broadband (Internet connection) type you're using in this page. There are six types of Internet connection, they are:

Cable Modem - Please go to section 2-3-1

Fixed-IP xDSL - Please go to section 2-3-2

PPPoE xDSL - Please go to section 2-3-3

PPTP xDSL - Please go to section 2-3-4

L2TP xDSL - Please go to section 2-3-5

Telstra Big Pond - Please go to section 2-3-6

If you're not sure, please contact your Internet service provider. A wrong Internet connection type will cause connection problem, and you will not be able to connect to internet.

If you want to go back to previous step, please press 'Back' button on the bottom of this page.

NOTE: Some service providers use 'DHCP' (Dynamic Host Configuration Protocol) to assign IP address to you. In this case, you can choose 'Cable Modem' as Internet connection type, even you're using another connection type, like xDSL. Also, some cable modem uses PPPoE, so you can choose 'PPPoE xDSL' for such cable modem connection, even you're using a cable modem.

2-3-1 Setup procedure for 'Cable Modem':

Cable Modem

Host Name :	<input style="width: 80%;" type="text"/>
MAC address :	<input style="width: 80%;" type="text" value="000000000000"/>
	<input type="button" value="Clone Mac address"/>
<input type="button" value="Back"/> <input type="button" value="OK"/>	

Here are descriptions of every setup items:

Host Name:	Please input the host name of your computer, this is optional, and only required if your service provider asks you to do so.
MAC address:	Please input MAC address of your computer here, if your service provider only permits computer with certain MAC address to access internet. If you're using the computer which used to connect to Internet via cable modem, you can simply press 'Clone Mac address' button to fill the MAC address field with the MAC address of your computer.

After you finish with all settings, please click 'OK' button; if you want to go back to previous menu, click 'Back'.

2-3-2 Setup procedure for 'Fixed-IP xDSL':

Fixed-IP xDSL

Enter the IP Address, Subnet Mask, Gateway IP Address and DNS IP Address provided to you by your ISP in the appropriate fields.

IP address assigned by your Service Provider :	<input style="width: 50%;" type="text" value="172.1.1.1"/>
Subnet Mask :	<input style="width: 50%;" type="text" value="255.255.0.0"/>
DNS address :	<input style="width: 50%;" type="text"/>
Service Provider Gateway Address :	<input style="width: 50%;" type="text" value="172.1.1.254"/>
<input type="button" value="Back"/> <input type="button" value="OK"/>	

Here are descriptions of every setup items:

IP address assigned by your Service Provider:	Please input IP address assigned by your service provider.
Subnet Mask:	Please input subnet mask assigned by your service provider
DNS address:	Please input the IP address of DNS server provided by your service provider.
Service Provider Gateway Address:	Please input the IP address of DNS server provided by your service provider.

You must use the addresses provided by your Internet service provider, wrong setting value will cause connection problem.

When you finish with all settings, press 'OK' ; if you want to go back to previous menu, click 'Back'.

NOTE: You can choose this Internet connection method if your service provider assigns a fixed IP address (also know as static address) to you, and not using DHCP or PPPoE protocol. Please contact your service provider for further information.

2-3-3 Setup procedure for 'PPPoE xDSL':

PPPoE

Enter the User Name and Password required by your ISP in the appropriate fields. If your ISP has provided you with a "Service Name" enter it in the Service Name field, otherwise, leave it blank.

User Name :	<input type="text"/>
Password :	<input type="password"/>
Service Name :	<input type="text"/>
MTU :	<input type="text" value="1392"/> (512<=MTU Value<=1492)
Connection Type :	<input type="button" value="Connect on Demand"/> <input type="button" value="Connect"/> <input type="button" value="Disconnect"/>
Idle Time Out :	<input type="text" value="10"/> (1-1000minutes)

Here are descriptions of every setup items:

User Name:	Please input user name assigned by your Internet service provider here.
Password:	Please input the password assigned by your Internet service provider here.
Service Name:	Please give a name to this Internet service, this is optional
MTU:	Please input the MTU value of your network connection here. If you don't know, you can use default value.
Connection Type:	Please select the connection type of Internet connection you wish to use (detailed explanation listed below).
Idle Time Out:	Please input idle time out, (detailed explanation listed below).

When you finish with all settings, please click 'OK' ; if you want to go back to previous menu, click 'Back'.

MTU - Please use default value if you don't know what it is, or ask your service provider for a proper value.

Connection Type - There are 3 options: 'Continuous' - keep internet connection alive, do not disconnect, connect on Demand - only connects to Internet when there's a connect attempt, and 'Manual' - only connects to Internet when 'Connect' button on this page is pressed, and disconnects when 'Disconnect button is pressed.

Idle Time Out: Specify the time to shutdown internet connect after no internet activity is detected by minute. This option is only available when connection type is 'Connect on Demand'.

2-3-4 Setup procedure for 'PPTP xDSL':

PPTP xDSL requires two kinds of setting: WAN interface setting (setup IP address) and PPTP setting (PPTP user name and password). Here we start from WAN interface setting:

• WAN Interface Settings

Obtain an IP address automatically

Host Name :

MAC address :

Use the following IP address

IP address :

Subnet Mask :

Default Gateway :

Select the type of how you obtain IP address from your service provider here. You can choose 'Obtain an IP address automatically' (equal to DHCP, please refer to 'Cable Modem' section above), or 'Use the following IP address' (i.e. static IP address).

WAN interface settings must be correctly set, or the Internet connection will fail even those settings of PPTP settings are correct. Please contact your Internet service provider if you don't know what you should fill in these fields.

Now please go to PPTP settings section:

• PPTP Settings

User ID :

Password :

PPTP Gateway :

Connection ID : (Optional)

MTU : (512<= MTU Value<=1492)

BEZEQ-ISRAEL : Enable (for BEZEQ network in ISRAEL use only)

Connection Type :

Idle Time Out : (1-1000minutes)

Here are descriptions of every setup items:

User ID:	Please input user ID (user name) assigned by your Internet service provider here.
Password:	Please input the password assigned by your Internet service provider here.
PPTP Gateway:	Please input the IP address of PPTP gateway assigned by your Internet service provider here.
Connection ID:	Please input the connection ID here, this is optional and you can leave it blank.
MTU:	Please input the MTU value of your network connection here. If you don't know, you can use default value.
Connection type:	Please select the connection type of Internet connection you wish to use, please refer to last section for detailed descriptions.
Idle Time Out:	Please input the idle time out of Internet connection you wish to use, and refer to last section for detailed descriptions.

Setting item 'BEZEQ-ISRAEL' is only required to check if you're using the service provided by BEZEQ network in Israel.

When you finish with all settings, please click 'OK'; if you want to go back to previous menu, click 'Back'.

2-3-5 Setup procedure for 'L2TP xDSL':

L2TP is another popular connection method for xDSL and other Internet connection types, and all required setting items are the same with PPTP connection.

Like PPTP, there are two kinds of required setting, we'll start from 'WAN Interface Settings':

• **WAN Interface Settings**

Obtain an IP address automatically

Host Name :	<input type="text"/>	
MAC address :	<input type="text" value="000000000000"/>	<input type="button" value="Clone Mac address"/>

Use the following IP address

IP address :	<input type="text" value="0.0.0.0"/>
Subnet Mask :	<input type="text" value="0.0.0.0"/>
Default Gateway :	<input type="text" value="0.0.0.0"/>

Please select the type of how you obtain IP address from your service provider here. You can choose 'Obtain an IP address automatically' (equal to DHCP, please refer to 'Cable Modem' section above), or 'Use the following IP address' (equal to static IP address, please refer to 'PPPoE xDSL' section above).

WAN interface settings must be correctly set, or the Internet connection will fail even those settings of PPTP settings are correct. Please contact your Internet service provider if you don't know what you should fill in these fields.

2-3-6 Setup procedure for 'L2TP':

• **L2TP Settings**

User ID :	<input style="width: 80%;" type="text"/>
Password :	<input style="width: 80%;" type="password"/>
L2TP Gateway :	<input style="width: 80%;" type="text"/>
MTU :	<input style="width: 80%;" type="text" value="1392"/> (512<=MTU Value<=1492)
Connection Type :	<input type="text" value="Continuous"/> <input type="button" value="Connect"/> <input type="button" value="Disconnect"/>
Idle Time Out :	<input style="width: 80%;" type="text" value="10"/> (1-1000 minutes)

Here are descriptions of every setup items:

User ID:	Please input user ID (user name) assigned by your Internet service provider here.
Password:	Please input the password assigned by your Internet service provider here.
L2TP Gateway:	Please input the IP address of PPTP gateway assigned by your Internet service provider here.
MTU:	Please input the MTU value of your network connection here. If you don't know, you can use default value.
Connection type:	Please select the connection type of Internet connection you wish to use, please refer to last section for detailed descriptions.
Idle Time Out:	Please input the idle time out of Internet connection you wish to use, and refer to last section for detailed descriptions.

When you finish with all settings, please click 'OK'; if you want to go back to previous menu, click 'Back'.

2-3-7 Setup procedure for 'Telstra Big Pond':

Telstra Big Pond (Australia Only)

If your Internet service is provided by Telstra Big Pond in Australia, you will need to enter your information below, This information is provided by Teistra BigPond.

User Name :	<input type="text"/>
Password :	<input type="password"/>
<input type="checkbox"/> User decide login server manually	
Login Server :	<input type="text" value="0.0.0.0"/>
<input type="button" value="Back"/> <input type="button" value="OK"/>	

This setting only works when you're using Telstra big pond's network service in Australia. You need to input:

User Name:	Please input the user name assigned by Telstra.
Password:	Please input the password assigned by Telstra.
User device login server manually:	Check this box to choose login server by yourself.
Login Server:	Please input the IP address of login server here.

When you finish with all settings, click 'OK'; if you want to go back to previous menu, click 'Back'.

When all settings are finished, you'll see the following message displayed on your web browser:

Save setting successfully!

Please press APPLY button to restart the system for changes to take effect.

Please click 'Apply' button to prepare to restart the router, and you'll see this message:

System Restarting! Please wait for a while !

Please wait for about 50 seconds, then click 'OK!' button. You'll be back to router management interface again, and the router is ready with new settings.

2-4 Basic Setup

In this chapter, you'll know how to change the time zone, password, and remote management settings. Please start your web browser and log onto router web management interface, then click 'General Setup' button on the left, or click 'General Setup' link at the upper-right corner of web management interface.

NetComm®
www.netcomm.com.au

11n Wireless Broadband Router

QuickSetup

Quick Setup Wizard
The Quick Setup Wizard provides only the necessary configurations to connect your Broadband router to your Internet Service Provider (ISP) through an external cable or a DSL modem.

General Setup
The Broadband router supports advanced functions like Virtual Server, Access Control, Hacker Attack Detection and DMZ. We highly recommend you keep the default settings.

Status Information
The Broadband router's status information provides the following information about your Broadband router: Hardware/Firmware version, Serial Number, and its current operating status.

Tools
Broadband router Tools - Tools include Configuration tools, Firmware upgrade and Reset. Configuration tools allow you to Backup, Restore, or Restore to Factory Default setting for your Broadband router. The Firmware upgrade tool allows you to upgrade your Broadband router's firmware. The RESET tool allows you to reset your Broadband router.

2-4-1 Time zone and time auto-synchronization

Please follow the following instructions to set time zone and time auto-synchronization parameters:

Please click 'System' menu on the left of web management interface, then click 'Time Zone', and the following message will be displayed on your web browser: Please select time zone at 'Set time zone' drop-down list, and input the IP address or host name of time server. If you want to enable daylight savings setting, please check 'Enable Function' box, and set the duration of daylight setting. When you finish, click 'Apply'. You'll see the following message displayed on web browser:

Save setting successfully!

You may press CONTINUE button to continue configuring other settings or press APPLY button to restart the system for changes to take effect

Continue

Apply

Press 'Continue' to save the settings made and back to web management interface; press 'Apply' to save the settings made and restart the router so the settings will take effect after it reboots.

NOTE: You can refer to the instructions given in last chapter: 'Using Quick Setup', for detailed descriptions on time zone settings.

2-4-2 Change management password

Default password of this router is 'admin', and it's displayed on the login prompt when accessed from web browser. There's a security risk if you don't change the default password, since everyone can see it. This is very important when you have wireless function enabled. To change password, please follow the following instructions:

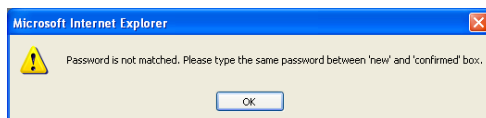
Please click 'System' menu on the left of web management interface, then click 'Password Settings', and the following message will be displayed on your web browser:

Current Password :	<input type="text"/>
New Password :	<input type="text"/>
Confirmed Password :	<input type="text"/>

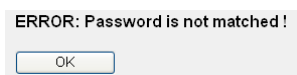
Here are descriptions of every setup items:

Current Password:	Please input current password here.
New Password:	Please input new password here.
Confirmed Password:	Please input new password here again.

When you finish, click 'Apply'; If you want to keep original password unchanged, click 'Cancel'. If the password you typed in 'New Password' and 'Confirmed Password' field are not the same, you'll see the following message:



Please retype the new password again when you see above message. If you see the following message:



It means the content in 'Current Password' field is wrong, please click 'OK' to go back to previous menu, and try to input current password again. If the current and new passwords are correctly entered, after you click 'Apply', you'll be prompted to input your new password:



Please use new password to enter web management interface again, and you should be able to login with new password.

2-4-3 Remote Management

This router does not allow management access from Internet, to prevent possible security risks (especially when you defined a weak password, or didn't change default password). However, you can still management this router from a specific IP address by enabling the 'Remote Management' Function.

To do so, please follow the following instructions:

Please click 'System' menu on the left of web management interface, then click 'Remote Management', and the following message will be displayed on your web browser:

Host address	Port	Enabled
<input type="text" value="0.0.0.0"/>	<input type="text" value="8080"/>	<input type="checkbox"/>
		<input type="button" value="Apply"/> <input type="button" value="Cancel"/>

Here are descriptions of every setup items:

Host Address:	Input the IP address of the remote host you wish to initiate a management access.
Port:	You can define the port number this router should expect an incoming request. If you're providing a web service (default port number is 80), you should try to use other port number. You can use the default port setting '8080', or something like '32245' or '1429'. (Any integer between 1 and 65534)

When you finish with all settings, click 'Apply', and you'll see the following message displayed on web browser:

Save setting successfully!

You may press CONTINUE button to continue configuring other settings or press APPLY button to restart the system for changes to take effect

Press 'Continue' to save the settings made and back to web management interface; press 'Apply' to save the settings made and restart the router so the settings will take effect after it reboots.

NOTE: When you want to manage this router from another computer on internet, you have to input the IP address and port number of this router. If your Internet service provider assigns you with a static IP address, it will not be a problem; but if the IP address your service provider assigns to you will vary every time you establish an internet connection, this will be a problem.

Please either ask your service provider to give you a static IP address, or use dynamic IP to host name mapping services like DDNS. Please refer to chapter 2-5-8 'DDNS client' for details.

NOTE: Default port number the web browser will use is '80'. If the 'Port' setting in this page is not '80', you have to assign the port number in the address bar of web browser manually. For example, if the IP address of this router is 192.168.1.1, and the port number you set is 8888, you have to input following address in the address bar of web browser:

<http://192.168.1.1:8888>

2-5 Setup Internet Connection (WAN Setup)

Internet connections setup can be done by using 'Quick Setup' menu described in chapter 2-3. However, you can setup WAN connections up by using WAN configuration menu. You can also set advanced functions like DDNS (Dynamic DNS) here.

To start configuration, please follow the following instructions:

Please click 'WAN' menu on the left of web management interface, and the following message will be displayed on your web browser:

Please select an Internet connection method depend on the type of connection you're using. You can either click the connection method on the left or right. If you select the connection method on the right, please click 'More Configuration' button after a method is selected.

System

- ✓ WAN
 - Dynamic IP
 - Static IP
 - PPPoE
 - PPTP
 - L2TP
 - Telstra Big Pond
 - DNS
 - DDNS
- LAN
- Wireless
- QoS
- NAT
- Firewall

WAN Settings

The Broadband router can be connected to your Service Provider through the following methods

- Dynamic IP** Obtains an IP Address automatically from your Service Provider.
- Static IP** Uses a Static IP Address. Your Service Provider gives a Static IP Address to access Internet services.
- PPPoE** PPP over Ethernet is a common connection method used in xDSL connections.
- PPTP** Point-to-Point Tunneling Protocol is a common connection method used in xDSL connections.
- L2TP** Layer Two Tunneling Protocol is a common connection method used in xDSL connections.
- Telstra Big Pond** Telstra Big Pond is a Internet service is provided in Australia.

[More Configuration](#)

2-5-1 Setup procedure for 'Dynamic IP':

Dynamic IP ?

The Host Name is optional, but may be required by some Service Providers. The default MAC Address is set to the WAN physical interface on the Broadband router. If required by your Service Provider, you can use the 'Clone MAC Address' button to copy the MAC Address of the Network Interface Card installed in your PC and replace the WAN MAC Address with this MAC Address.

Host Name :	<input style="width: 80%;" type="text"/>
MAC address :	<input style="width: 80%;" type="text" value="000000000000"/>

Here are descriptions of every setup items:

Host Name:	Please input host name of your computer, this is optional, and only required if your service provider asks you to do so.
MAC Address:	Please input MAC address of your computer, if your service provider only permits computer with certain MAC address to access internet. If you're using the computer which used to connect to Internet via cable modem, you can simply press 'Clone Mac address' button to fill the MAC address field with the MAC address of your computer,

After you finish with all settings, please click 'Apply'; if you want to remove and value you entered, please click 'Cancel'.

After you click 'Apply', the following message will be displayed on your web browser:

Save setting successfully!

You may press CONTINUE button to continue configuring other settings or press APPLY button to restart the system for changes to take effect

Please click 'Continue' to back to previous setup menu; to continue on router setup, or click 'Apply' to reboot the router so the settings will take effect (Please wait for about 50 seconds while router is rebooting).

2-5-2 Setup procedure for 'Static IP':

Static IP ?

If your Service Provider has assigned a Fixed IP address; enter the assigned IP Address, Subnet Mask and the Gateway IP Address provided.

IP address assigned by your Service Provider :	<input type="text" value="192.168.1.10"/>
Subnet Mask :	<input type="text" value="255.255.255.0"/>
Service Provider Gateway Address :	<input type="text" value="192.168.1.254"/>

Here are descriptions of every setup items:

IP address assigned by your Service Provider:	Please input IP address assigned by your service provider.
Subnet Mask:	Please input subnet mask assigned by your service provider
Service Provider Gateway Address:	Please input the IP address of DNS server provided by your service provider.

After you finish with all settings, please click 'Apply' button, and the following message will be displayed on your web browser:

Save setting successfully!

You may press CONTINUE button to continue configuring other settings or press APPLY button to restart the system for changes to take effect

Please click 'Continue' to back to previous setup menu; to continue on other setup procedures, or click 'Apply' to reboot the router so the settings will take effect (Please wait for about 50 seconds while router is rebooting).

If you want to reset all settings in this page back to previously-saved value, please click 'Cancel' button.

2-5-3 Setup procedure for 'PPPoE':

PPPoE ?

Enter the PPPoE User Name and Password assigned by your Service Provider. The Service Name is normally optional, but may be required by some Service Providers. Enter a Idle Time (in minutes) to define a maximum period of time for which the Internet connection is maintained during inactivity. If the connection is inactive for longer than the Maximum Idle Time, then the connection will be dropped. You can enable the Connect on Demand option to automatically re-establish the connection as soon as you attempt to access the Internet again. If your Internet Service Provider requires the use of PPPoE, enter the information below.

User Name :	<input type="text"/>
Password :	<input type="password"/>
Service Name :	<input type="text"/>
MTU :	<input type="text" value="1392"/> (512<=MTU Value<=1492)
Connection Type :	<input type="text" value="Continuous"/> <input type="button" value="Connect"/> <input type="button" value="Disconnect"/>
Idle Time Out :	<input type="text" value="10"/> (1-1000minutes)

User Name:	Please input user name assigned by your Internet service provider here.
Password:	Please input the password assigned by your Internet service provider here.
Service Name:	Please give a name to this Internet service, this is optional
MTU:	Please input the MTU value of your network connection here. If you don't know, you can use default value.
Connection Type:	Please select the connection type of Internet connection you wish to use (detailed explanation listed below).
Idle Time Out:	Please input idle time out, (detailed explanation listed below).

After you finish with all settings, please click 'Apply' button, and the following message will be displayed on your web browser:

Save setting successfully!

You may press CONTINUE button to continue configuring other settings or press APPLY button to restart the system for changes to take effect

Please click 'Continue' to back to previous setup menu; to continue on other setup procedures, or click 'Apply' to reboot the router so the settings will take effect (Please wait for about 50 seconds while router is rebooting).

If you want to reset all settings in this page back to previously-saved value, please click 'Cancel' button.

2-5-4 Setup procedure for 'PPTP':

PPTP requires two kinds of setting: WAN interface setting (setup IP address) and PPTP setting (PPTP user name and password). Here we start from WAN interface setting:

• **WAN Interface Settings**

Obtain an IP address automatically

Host Name :	<input type="text"/>	
MAC address :	<input type="text" value="000000000000"/>	<input type="button" value="Clone Mac address"/>

Use the following IP address

IP address :	<input type="text" value="0.0.0.0"/>
Subnet Mask :	<input type="text" value="0.0.0.0"/>
Default Gateway :	<input type="text" value="0.0.0.0"/>

Select the type of how you obtain IP address from your service provider here. You can choose 'Obtain an IP address automatically' (equal to DHCP, please refer to 'Cable Modem' section above), or 'Use the following IP address' (i.e. static IP address)

WAN interface settings must be correctly set, or the Internet connection will fail even those settings of PPTP settings are correct. Please contact your Internet service provider if you don't know what you should fill in these fields.

Now please go to PPTP settings section:

• **PPTP Settings**

User ID :	<input type="text"/>
Password :	<input type="password"/>
PPTP Gateway :	<input type="text" value="0.0.0.0"/>
Connection ID :	<input type="text"/> (Optional)
MTU :	<input type="text" value="1392"/> (512<= MTU Value<=1492)
BEZEQ-ISRAEL :	<input type="checkbox"/> Enable (for BEZEQ network in ISRAEL use only)
Connection Type :	<input type="text" value="Continuous"/> <input type="button" value="Connect"/> <input type="button" value="Disconnect"/>
Idle Time Out :	<input type="text" value="10"/> (1-1000minutes)

Here are descriptions of every setup items:

User ID:	Please input user ID (user name) assigned by your Internet service provider here.
Password:	Please input the password assigned by your Internet service provider here.
PPTP Gateway:	Please input the IP address of PPTP gateway assigned by your Internet service provider here.
Connection ID:	Please input the connection ID here, this is optional and you can leave it blank.
MTU:	Please input the MTU value of your network connection here. If you don't know, you can use default value.
Connection type:	connection you wish to use, please refer to last section for detailed descriptions.
Idle Time Out:	Please input the idle time out of Internet connection you wish to use, and refer to last section for detailed descriptions.

Setting item 'BEZEQ-ISRAEL' is only required to check if you're using the service provided by BEZEQ network in Israel.

When you finish with all settings, please click 'OK'; if you want to go back to previous menu, click 'Back'.

2-5-5 Setup procedure for 'L2TP':

• L2TP Settings

User ID :	<input type="text"/>
Password :	<input type="password"/>
L2TP Gateway :	<input type="text"/>
MTU :	<input type="text" value="1392"/> (512<=MTU Value<=1492)
Connection Type :	<input type="text" value="Continuous"/> <input type="button" value="Connect"/> <input type="button" value="Disconnect"/>
Idle Time Out :	<input type="text" value="10"/> (1-1000 minutes)

Here are descriptions of every setup items:

User ID:	Please input user ID (user name) assigned by your Internet service provider here.
Password:	Please input the password assigned by your Internet service provider here.
L2TP Gateway:	Please input the IP address of PPTP gateway assigned by your Internet service provider here.
MTU:	Please input the MTU value of your network connection here. If you don't know, you can use default value.
Connection type:	Please select the connection type of Internet connection you wish to use, please refer to last section for detailed descriptions.
Idle Time Out:	Please input the idle time out of Internet connection you wish to use, and refer to last section for detailed descriptions.

When you finish with all settings, please click 'OK' ; if you want to go back to previous menu, click 'Back'.

2-5-6 Setup procedure for 'Telstra Big Pond':

Telstra Big Pond (Australia Only)

If your Internet service is provided by Telstra Big Pond in Australia, you will need to enter your information below, This information is provided by Teistra BigPond.

User Name :	<input type="text"/>
Password :	<input type="password"/>
<input type="checkbox"/> User decide login server manually	
Login Server :	<input type="text" value="0.0.0.0"/>

This setting only works when you're using Telstra big pond's network service in Australia. You need to input:

User Name:	Please input the user name assigned by Telstra.
Password:	Please input the password assigned by Telstra.
User device login server manually:	Check this box to choose login server by yourself.
Login Server:	Please input the IP address of login server here.

When you finish with all settings, click 'OK' ; if you want to go back to previous menu, click 'Back'.

2-5-7 Setup procedure for 'DNS':

If you select 'Dynamic IP' or 'PPPoE' as Internet connection method, at least one DNS server's IP address should be assigned automatically. However, if you have preferred DNS server, or your service provider didn't assign the IP address of DNS server because of any reason, you can input the IP address of DNS server here.

DNS ?

A Domain Name System (DNS) server is like an index of IP Addresses and Web Addresses. If you type a Web address into your browser, such as www.broadbandrouter.com, a DNS server will find that name in its index and find the matching IP address. Most ISPs provide a DNS server for speed and convenience. Since your Service Provider may connect you to the Internet through dynamic IP settings, it is likely that the DNS server IP Address is also provided dynamically. However, if there is a DNS server that you would rather use, you need to specify the IP Address of that DNS server. The primary DNS will be used for domain name access first, in case the primary DNS access failures, the secondary DNS will be used.
Has your Internet service provider given you a DNS address?

DNS address :	<input type="text" value="192.168.0.2"/>
Secondary DNS Address (optional) :	<input type="text"/>

Here are descriptions of every setup items:

DNS Address:	Please input the IP address of DNS server provided by your service provider.
Secondary DNS Address:	Please input the IP address of another DNS server provided by your service provider, this is optional.

NOTE: Only IP address can be entered here; DO NOT use the hostname of DNS server! (i.e. only numeric characters and dots are accepted)

- 10.20.30.40 – **Correct**
- dns.serviceprovider.com – **Incorrect**

After you finish with all settings, please click 'Apply' button, and the following message will be displayed on your web browser:

Save setting successfully!

You may press CONTINUE button to continue configuring other settings or press APPLY button to restart the system for changes to take effect

Please click 'Continue' to back to previous setup menu; to continue on other setup procedures, or click 'Apply' to reboot the router so the settings will take effect (Please wait for about 50 seconds while router is rebooting).

If you want to reset all settings in this page back to previously-saved value, please click 'Cancel' button.

2-5-8 Setup procedure for 'DDNS':

DDNS (Dynamic DNS) is a IP-to-Hostname mapping service for those Internet users who don't have a static (fixed) IP address. It will be a problem when such user wants to provide services to other users on Internet, because their IP address will vary every time when connected to Internet, and other user will not be able to know the IP address they're using at a certain time.

This router supports DDNS service of following service providers:

DynDNS (<http://www.dyndns.org>)

TZO (<http://www.tzo.com>)

Please go to one of DDNS service provider's webpage listed above, and get a free DDNS account by the instructions given on their webpage.

DDNS

DDNS allows users to map the static domain name to a dynamic IP address. You must get a account, password and your static domain name from the DDNS service providers. Our products have DDNS support for www.dyndns.org and www.tzo.com now.

Dynamic DNS :	<input type="radio"/> Enabled <input checked="" type="radio"/> Disabled
Provider :	DynDNS
Domain Name :	<input type="text"/>
Account / E-Mail :	<input type="text"/>
Password / Key :	<input type="text"/>

Here are descriptions of every setup items:

Dynamic DNS:	If you want to enable DDNS function, please select 'Enabled'; otherwise please select 'Disabled'.
Provider:	Select your DDNS service provider here.
Domain Name:	Input the domain name you've obtained from DDNS service provider.
Account/E-Mail:	Input account or email of DDNS registration.
Password/Key:	Input DDNS service password or key.

After you finish with all settings, please click 'Apply' button, and the following message will be displayed on your web browser:

Save setting successfully!

You may press CONTINUE button to continue configuring other settings or press APPLY button to restart the system for changes to take effect

Please click 'Continue' to back to previous setup menu; to continue on other setup procedures, or click 'Apply' to reboot the router so the settings will take effect (Please wait for about 50 seconds while router is rebooting).

If you want to reset all settings in this page back to previously-saved value, please click 'Cancel' button.

2-6 Wired LAN Configuration

Before all computers using wired Ethernet connection (i.e. those computers connect to this router's LAN port 1 to 4 by Ethernet cable) can communicate with each other and access the internet, they must have a valid IP address.

There are two ways to assign IP addresses to computers: static IP address (set the IP address for every computer manually), and dynamic IP address (IP address of computers will be assigned by the router automatically). It's recommended for most of computers to use dynamic IP address, it will save a lot of time on setting IP addresses for every computer, especially when there are a lot of computers in your network; for servers and network devices which will provide services to other computer and users that come from Internet, static IP address should be used, so other computers can locate the server.

Suggestions on IP address numbering plan:

If you have no idea on how to define an IP address plan for your network, here are some suggestions.

- 1. A valid IP address has 4 fields: a.b.c.d, for most of home and company users, it's suggested to use 192.168.c.d, where c is an integer between 0 and 254, and d is an integer between 1 and 254. This router is capable to work with up to 253 clients, so you can set 'd' field of IP address of router as 1 or 254 (or any number between 1 and 254), and pick a number between 0 and 254 for field 'c'.*
- 2. In most cases, you should use '255.255.255.0' as subnet mask, which allows up to 253 clients (this also meets router's capability of working with up to 253 clients).*
- 3. For all servers and network devices which will provide services to other people (like Internet service, print service, and file service), they should use static IP address. Give each of them a unique number between 1 and 253, and maintain a list, so everyone can locate those servers easily.*
- 4. For computers which are not dedicated to provide specific service to others, they should use dynamic IP address.*

If you don't really understand the descriptions listed above, don't worry! We will provide recommended setup values below.

Please follow the following instructions to set wired LAN parameters:

Please click 'LAN' menu on the left of web management interface, there are three setup groups here: 'LAN IP', 'DHCP Server', and 'Static DHCP Leases Table'. Here are setup instructions for each of them:

2-6-1 LAN IP section:

• LAN IP

IP address	192.168.1.1
Subnet Mask	255.255.255.0
802.1d Spanning Tree	Disabled
DHCP Server	Enabled

Here are descriptions of every setup items:

IP address:	Please input the IP address of this router.
Subnet Mask:	Please input subnet mask for this network.
802.1d Spanning Tree:	If you wish to activate 802.1d spanning tree function, select 'Enabled' for setup item '802.1d Spanning Tree', or set it to 'Disabled'
DHCP Server:	If you want to activate DHCP server function of this router, select 'Enabled', or set it to 'Disabled'.

Recommended Value if you don't know what to fill:

IP Address: 192.168.1.1
 Subnet Mask: 255.255.255.0
 802.1d Spanning Tree: Disabled
 DHCP Server: Enabled

2-6-2 DHCP Server:

• DHCP Server

Lease Time	Forever
Start IP	192.168.1.2
End IP	192.168.1.254
Domain Name	

These settings are only available when 'DHCP Server' in 'LAN IP' section is 'Enabled', and here are descriptions of every setup items:

Lease Time:	Please choose a lease time (the duration that every computer can keep a specific IP address) of every IP address assigned by this router from dropdown menu.
Start IP:	Please input the start IP address of the IP range.
End IP:	Please input the end IP address of the IP range.
Domain Name:	If you wish, you can also optionally input the domain name for your network. This is optional.

Recommended Value if you don't know what to fill:

Lease Time:	Two Weeks (or 'Forever', if you have less than 20 computers)
Start IP:	192.168.1.2
End IP:	192.168.1.254
Domain Name:	(leave it blank)

NOTE:

1. The number of the last field ('d' field) of the 'End IP' must be greater than 'Start IP', and can not be the same with router's IP address.
2. The former three fields of IP address of 'Start IP', 'End IP', and 'IP Address of 'LAN IP' section ('a', 'b', and 'c' fields) should be the same.
3. These settings will affect wireless clients too.

2-6-3 Static DHCP Leases Table:

This function allows you to assign a static IP address to a specific computer forever, so you don't have to set the IP address for a computer, and still enjoy the benefit of using DHCP server. Maximum 16 static IP addresses can be assigned here.

(If you set 'Lease Time' to 'forever' in 'DHCP Server' section, you can also assign an IP address to a specific computer permanently, however, you will not be able to assign a certain IP address to a specific computer, since IP addresses will be assigned in random order by this way).

Enable Static DHCP Leases

New	MAC address : <input type="text" value="001122334455"/>	IP address : <input type="text" value="192.168.2.100"/>	<input type="button" value="Add"/> <input type="button" value="Clear"/>
------------	------------------------------------------------------------	------------------------------------------------------------	-------------------------------------------------------------------------

Here are descriptions of every setup items:

Enable Static DHCP Leases:	Check this box to enable this function, otherwise uncheck it to disable this function.
MAC Address:	Input the MAC address of the computer or network device (total 12 characters, with character from 0 to 9, and from a to f, like '001122aabbcc')
IP address:	Input the IP address you want to assign to this computer or network device
'Add':	After you inputted MAC address and IP address pair, click this button to add the pair to static DHCP leases table.

If you want to remove all characters you just entered, click 'Clear'.

After you clicked 'Add', the MAC address and IP address mapping will be added to 'Static DHCP Leases Table' section.

• **Static DHCP Leases Table**
It allows to entry 16 sets address only.

NO.	MAC address	IP address	Select
1	00:11:22:33:44:55	192.168.2.100	<input type="checkbox"/>

If you want to delete a specific item, please check the 'Select' box of a MAC address and IP address mapping, then click 'Delete Selected' button; if you want to delete all mappings, click 'Delete All'. If you want to deselect all mappings, click 'Reset'.

After you finish all LAN settings, please click 'Apply' button on the bottom of this page. After you click 'Apply', the following message will be displayed on your web browser:

Save setting successfully!

You may press CONTINUE button to continue configuring other settings or press APPLY button to restart the system for changes to take effect

Please click 'Continue' to back to previous setup menu; to continue on router setup, or click 'Apply' to reboot the router so the settings will take effect (Please wait for about 50 seconds while router is rebooting).

2-7 Wireless LAN Configuration

If your computer, PDA, game console, or other network devices which is equipped with wireless network interface, you can use the wireless function of this router to let them connect to Internet and share resources with other computers with wired-LAN connection. You can also use the built-in security functions to protect your network from being intruded by malicious intruders.

Please follow the following instructions to set wireless parameters:

Please click 'Wireless' menu on the left of web management interface, and the following message will be displayed on your web browser. You must enable wireless function of this router, or the wireless interface of this router will not function. Please select 'Enable', then click 'Apply' button.

If you're coming here because you want to disable wireless function, please select 'Disable', then click 'Apply' button.

Wireless Settings

The gateway can be quickly configured as a wireless access point for roaming clients by setting the access identifier and channel number. It also supports data encryption and client filtering.

Enable or disable Wireless module function : Enable Disable

After you click 'Apply', the following message will be displayed on your web browser:

Save setting successfully!

You may press CONTINUE button to continue configuring other settings or press APPLY button to restart the system for changes to take effect

Please click 'Continue' to back to previous setup menu; to continue on other setup procedures, or click 'Apply' to reboot the router so the settings will take effect (Please wait for about 50 seconds while router is rebooting).

2-7-1 Basic Wireless Settings

Please click 'Wireless' menu on the left of web management interface, then click 'Basic Settings', and the following message will be displayed on your web browser:

Mode:	AP
Band:	2.4 GHz (B+G+N)
ESSID:	wireless
Channel Number:	11

This wireless router can be work in 4 modes:

- a. AP: Standard wireless AP (access point).
- b. AP Bridge-Point to Point: Connect this router with another wireless router, to expand the scope of network.
- c. AP Bridge-Point to Multi-Point: Connect this router with up to four other wireless routers, to expand the scope of network.
- d. AP Bridge-WDS: Connect this router with up to four WDS-capable wireless routers, to expand the scope of network.

NOTE: For 'AP Bridge-Point to Point' and 'AP Bridge-Point to Multi-Point' mode, wireless router is operated in wireless bridge dedicated mode – wireless router is only used to expand the scope of network, and no wireless clients will be accepted. If you want to use your wireless router to expand the scope of network, and also accept wireless clients, please select 'AP Bridge-WDS' mode.

Please select a proper operation mode you want to use from 'Mode' dropdown menu , and continue on other operation mode specific settings:

2-7-1-1 Setup procedure for 'AP':

Please select the radio band you want to use from 'Band' dropdown menu , and the following message will be displayed:

Mode:	AP
Band:	2.4 GHz (B+G+N)
ESSID:	wireless
Channel Number:	11

Here are descriptions of every setup items:

Band:	<p>Please select the radio band from one of following options:</p> <p>2.4 GHz (B) 2.4GHz band, only allows 802.11b wireless network client to connect this router (maximum transfer rate 11Mbps).</p> <p>2.4 GHz (N) 2.4GHz band, only allows 802.11n wireless network client to connect this router (maximum transfer rate 300Mbps).</p> <p>2.4 GHz (B+G) 2.4GHz band, only allows 802.11b and 802.11g wireless network client to connect this router (maximum transfer rate 11Mbps for 802.11b clients, and maximum 54Mbps for 802.11g clients).</p> <p>2.4 GHz (G) 2.4GHz band, only allows 802.11g wireless network client to connect this router (maximum transfer rate 54Mbps).</p> <p>2.4 GHz (B+G+N) 2.4GHz band, allows 802.11b, 802.11g, and 802.11n wireless network client to connect this router (maximum transfer rate 11Mbps for 802.11b clients, maximum 54Mbps for 802.11g clients, and maximum 300Mbps for 802.11n clients).</p>
ESSID:	<p>This is the name of wireless router. You can type any alphanumerical characters here, maximum 32 characters. ESSID is used to identify your own wireless router from others when there are other wireless routers in the same area. Default SSID is 'wireless', it's recommended to change default ESSID value to the one which is meaningful to you, like myhome, office_room1, etc.</p>
Channel Number:	<p>Please select a channel from the dropdown list of 'Channel Number', available channel numbers are 1 to 13. You can choose any channel number you want to use, and almost all wireless clients can locate the channel you're using automatically without any problem. However, it's still useful to remember the channel number you use, some wireless client supports manual channel number select, and this would help in certain scenario when there is some radio communication problem.</p>

NOTE: If you don't have a special reason to limit the type of allowed wireless client, it's recommended to choose '2.4 GHz (B+G+N) to maximize wireless client compatibility.

TIPS: You can try to change channel number to another one if you think the data transfer rate is too slow, or keep having problem while transferring the file over wireless network. There could be some other wireless routers using the same channel, which will disturb the radio communication between wireless client and the wireless router.

2-7-1-2 Setup procedure for 'AP Bridge-Point to Point:

In this mode, you can connect your wireless router with another, to combine two access points and expand the scope of wireless network, and all clients (wired only – AP will not accept wireless clients in this mode) of two wireless routers will think they're on the same physical network. This function is very convenient when you need to connect two networks between two buildings. Here are instructions about how to connect two wireless routers together:

Mode:	AP Bridge-Point to Point
Band:	2.4 GHz (B+G+N)
Channel Number:	1
MAC address 1 :	000000000000
Set Security :	<input type="button" value="Set Security"/>

NOTE: Two wireless routers must use the same mode, band, channel number, and security setting!

Here are descriptions of every setup items:

Band	Select the band you want to use, two wireless routers must use the same setting.
Channel Number	Select the channel you want to use, two wireless routers must use the same setting.
MAC address	Input the MAC address of another wireless router.
Set Security	Click to set security settings for this connection (Please go to section '2-7-3 Wireless Security' for detailed instructions).

NOTE: If you didn't see a popup window, please check the web browser or antivirus program, some of them will block popup windows.

2-7-1-3 Setup procedure for 'AP Bridge-Point to Multi-Point':

Mode:	AP Bridge-Point to Multi-Point ▾
Band:	2.4 GHz (B+G+N) ▾
Channel Number:	1 ▾
MAC address 1 :	<input type="text" value="000000000000"/>
MAC address 2 :	<input type="text" value="000000000000"/>
MAC address 3 :	<input type="text" value="000000000000"/>
MAC address 4 :	<input type="text" value="000000000000"/>
Set Security :	<input type="button" value="Set Security"/>

Here are descriptions of every setup items:

Band	Select the band you want to use, two wireless routers must use the same setting.
Channel Number	Select the channel you want to use, two wireless routers must use the same setting.
MAC address 1 to 4 (4 - 7)	Input the MAC address of other wireless routers.
Set Security	Click to set security settings for this connection (Please go to section '2-7-3 Wireless Security' for detailed instructions).

2-7-1-4 Setup procedure for 'AP Bridge – WDS'

In this mode, you can expand the scope of network by combining up to four other access points together, and every access point can still accept wireless clients.

Mode:	AP Bridge-WDS
Band:	2.4 GHz (B+G+N)
ESSID:	wireless
Channel Number:	11
MAC address 1 :	000000000000
MAC address 2 :	000000000000
MAC address 3 :	000000000000
MAC address 4 :	000000000000
Set Security:	<input type="button" value="Set Security"/>

Here are descriptions of every setup items:

Band	Select the band you want to use, two wireless routers must use the same setting.
ESSID	Input the ESSID of your wireless router, it can be the same with other wireless routers for the convenience of roaming, or different with other wireless routers so you can identify each of them.
Channel Number	Select the channel you want to use, two wireless routers must use the same setting.
MAC address 1 to 4 (5 - 8)	Input the MAC address of other wireless routers.
Set Security	Click to set security settings for this connection (Please go to section '2-7-3 Wireless Security' for detailed instructions).

After you finish the wireless setting, please click 'Apply' button, after you click 'Apply', the following message will be displayed on your web browser:

Save setting successfully!

You may press CONTINUE button to continue configuring other settings or press APPLY button to restart the system for changes to take effect

Please click 'Continue' to back to previous setup menu; to continue on router setup, or click 'Apply' to reboot the router so the settings will take effect (Please wait for about 50 seconds while router is rebooting).

2-7-2 Advanced Wireless Settings

This router provides some advanced control of wireless parameters, if you want to configure these settings, please click 'Wireless' menu on the left of web management interface, then click 'Advanced Settings', and the following message will be displayed on your web browser:

Fragment Threshold:	<input type="text" value="2346"/>	(256-2346)
RTS Threshold:	<input type="text" value="2347"/>	(0-2347)
Beacon Interval:	<input type="text" value="100"/>	(20- 1024 ms)
DTIM Period:	<input type="text" value="3"/>	(1-10)
Data Rate:	Auto <input type="button" value="v"/>	
N Data Rate:	Auto <input type="button" value="v"/>	
Channel Width:	<input checked="" type="radio"/> Auto 20/40 MHZ <input type="radio"/> 20 MHZ	
Preamble Type:	<input checked="" type="radio"/> Short Preamble <input type="radio"/> Long Preamble	
Broadcast Essid:	<input checked="" type="radio"/> Enable <input type="radio"/> Disable	
CTS Protect:	<input type="radio"/> Auto <input type="radio"/> Always <input checked="" type="radio"/> None	
Tx Power:	100 % <input type="button" value="v"/>	
Turbo Mode:	<input checked="" type="radio"/> Enable <input type="radio"/> Disable	
WMM:	<input type="radio"/> Enable <input checked="" type="radio"/> Disable	

Here are descriptions of every setup items:

Fragment:	Set the Fragment threshold of wireless radio.
Threshold:	Do not modify default value if you don't know what it is, default value is 2346.
RTS Threshold:	Set the RTS threshold of wireless radio. Do not modify default value if you don't know what it is, default value is 2347.
Beacon Interval:	Set the beacon interval of wireless radio. Do not modify default value if you don't know what it is, default value is 100.
DTIM Period:	Set the DTIM period of wireless radio. Do not modify default value if you don't know what it is, default value is 3.
Data Rate:	Set the wireless data transfer rate to a certain value. Since most of wireless devices will negotiate with each other and pick a proper data transfer rate automatically, it's not necessary to change this value unless you know what will happen after modification.
N Data Rate:	Same as above, but only for 802.11n clients.
Channel Width:	Set channel width of wireless radio. Do not modify default value if you don't know what it is, default setting is 'Auto 20/40 MHz'.
Preamble Type:	Set the type of preamble of wireless radio, Do not modify default value if you don't know what it is, default setting is 'Short Preamble'.
Broadcast ESSID:	Decide if the wireless router will broadcast its own ESSID or not. You can hide the ESSID of your wireless router (set the option to 'Disable'), so only people those who know the ESSID of your wireless router can get connected.
CTS Protect:	Enabling this setting will reduce the chance of radio signal collisions between 802.11b and 802.11g wireless access points. It's recommended to set this option to 'Auto' or 'Always'. However, if you set to 'None', your wireless router should be able to work fine, too.
Tx Power:	You can set the output power of wireless radio. Unless you're using this wireless router in a really big space, you may not have to set output power to 100%. This will enhance security (malicious / unknown users in distance will not be able to reach your wireless router).
Turbo Mode:	Enhance the data transfer rate of LAN (up to 35Mbps, only for 11g), default value is 'Enable', it's recommended to set this option to 'Enable'.
WMM:	The short of Wi-Fi MultiMedia, it will enhance the data transfer performance of multimedia contents when they're being transferred over wireless network. If you don't know what it is / not sure if you need it, it's safe to set this option to 'Enable', however, default value is 'Disable'.

After you finish these wireless settings, please click 'Apply' button, and the following message will be displayed on your web browser:

Save setting successfully!

You may press CONTINUE button to continue configuring other settings or press APPLY button to restart the system for changes to take effect

Please click 'Continue' to back to previous setup menu; to continue on router setup, or click 'Apply' to reboot the router so the settings will take effect (Please wait for about 50 seconds while router is rebooting).

2-7-3 Wireless Security

It's very important to set wireless security settings properly! If you don't, hackers and malicious users can reach your network and valuable data without your consent and this will cause serious security problems.

To set wireless security settings, Please click 'Wireless' menu on the left of web management interface, then click 'Security Settings', then follow the following instructions to set wireless security settings:

Please select an encryption method from 'Encryption' dropdown menu, there are four options:

2-7-3-1 Disable wireless security

When you select this mode, data encryption is disabled, and every wireless device in proximity will be able to connect your wireless router if no other security measure is enabled (like MAC address access control - see section 2-7-4, or disable ESSID broadcast).

Only use this option when you really want to allow everyone to use your wireless router, and you don't care if there's someone reads the data you transfer over network without your consent.

2-7-3-2 WEP - Wired Equivalent Privacy

When you select this mode, the wireless router will use WEP encryption, and the following setup menu will be shown on your web browser:

Here are descriptions of every setup items:

Key Length:	There are two types of WEP key length: 64-bit and 128-bit. Using '128-bit' is safer than '64-bit', but will reduce some data transfer performance.
Key Format:	There are two types of key format: ASCII and Hex. When you select a key format, the number of characters of key will be displayed. For example, if you select '64-bit' as key length, and 'Hex' as key format, you'll see the message at the right of 'Key Format' is 'Hex (10 characters)', which means the length of WEP key is 10 characters.
Default Tx Key:	You can set up to four sets of WEP key, and you can decide which key is being used by default here. If you don't know which one you should use, select 'Key 1'.
Encryption Key 1 to 4 (5-8):	Input WEP key characters here, the number of characters must be the same as the number displayed at 'Key Format' field. You can use any alphanumerical characters (0-9, a-z, and A-Z) if you select 'ASCII' key format, and if you select 'Hex' as key format, you can use characters 0-9, a-f, and A-F. You must enter at least one encryption key here, and if you entered multiple WEP keys, they should not be same with each other.

Enable 802.1x Authentication:	Check this box and another sub-menu will appear: <input checked="" type="checkbox"/> Enable 802.1x Authentication RADIUS Server IP address : <input type="text"/> RADIUS Server Port : 1812 <input type="text"/> RADIUS Server Password : <input type="text"/>
RADIUS Server IP address :	Please input the IP address of radius server here
RADIUS Server Port :	Please input the port number of radius server here.
RADIUS Server Password :	Please input the port number of radius password here.

TIPS: Some examples of WEP key (Don't use those examples; use the one of your own!):

ASCII (5 characters): pilot phone 23561 2Hyux #@xml

ASCII (13 characters): digitalFAMILY 82Jh26xHy3m&n

Hex (10 characters): 287d2aa732 1152dabc85

Hex (26 characters): 9284bcda8427c9e036f7abcd84

To improve security level, do not use those words which can be found in a dictionary or too easy to remember! ('pilot' and 'phone' listed above are bad examples; just intended to show you how a WEP key look like). Wireless clients will remember the WEP key, so you only have to input the WEP key on wireless client once, and it's worth to use complicated WEP key to improve security level.

After you finish WEP setting, please click 'Apply' button and the following message will be displayed on your web browser:

Save setting successfully!

You may press CONTINUE button to continue configuring other settings or press APPLY button to restart the system for changes to take effect

Please click 'Continue' to back to previous setup menu; to continue on other setup procedures, or click 'Apply' to reboot the router so the settings will take effect (Please wait for about 50 seconds while router is rebooting).

2-7-3-3 Wi-Fi Protected Access (WPA):

When you select this mode, the wireless router will use WPA encryption, and the following setup menu will be shown on your web browser:

Encryption :	WPA pre-shared key
WPA Unicast Cipher Suite :	<input checked="" type="radio"/> WPA(TKIP) <input type="radio"/> WPA2(AES) <input type="radio"/> WPA2 Mixed
Pre-shared Key Format :	Passphrase
Pre-shared Key :	
<input type="button" value="Apply"/> <input type="button" value="Cancel"/>	

Here are descriptions of every setup items:

WPA Unicast Cipher Suite:	Please select a type of WPA cipher suite. Available options are: WPA (TKIP), WPA2 (AES), and WPA2 Mixed. You can select one of them, but you have to make sure your wireless client support the cipher you selected.
Pre-shared Key Format:	Select the type of pre-shared key, you can select Passphrase (8 or more alphanumerical characters, up to 63), or Hex (64 characters of 0-9, and a-f).
Pre-shared Key:	Please input the WPA passphrase here. It's not recommended to use a word that can be found in a dictionary due to security reason.

After you finish WPA Pre-shared key setting, please click 'Apply' button and the following message will be displayed on your web browser:

Save setting successfully!

You may press CONTINUE button to continue configuring other settings or press APPLY button to restart the system for changes to take effect

Please click 'Continue' to back to previous setup menu; to continue on other setup procedures, or click 'Apply' to reboot the router so the settings will take effect (Please wait for about 50 seconds while router is rebooting).

NOTE: Some wireless clients (especially those manufactured before year 2003) only support WEP or WPA (TKIA) cipher. A driver upgrade would be needed for those clients to use WPA and WPA2 encryption.

2-7-3-4 WPA RADIUS:

If you have a RADIUS server, this router can work with it and provide safer wireless authentication.

Encryption :	<input type="text" value="WPA RADIUS"/>
WPA Unicast Cipher Suite :	<input checked="" type="radio"/> WPA(TKIP) <input type="radio"/> WPA2(AES) <input type="radio"/> WPA2 Mixed
RADIUS Server IP address :	<input type="text"/>
RADIUS Server Port :	<input type="text" value="1812"/>
RADIUS Server Password :	<input type="text"/>
<input type="button" value="Apply"/> <input type="button" value="Cancel"/>	

Here are descriptions of every setup items:

WPA Unicast Cipher Suite:	Please select a type of WPA cipher suite. Available options are: WPA (TKIP), WPA2 (AES), and WPA2 Mixed. You can select one of them, but you have to make sure your wireless client support the cipher you selected.
RADIUS Server IP address:	Please input the IP address of your Radius authentication server here.
RADIUS Server Port:	Please input the port number of your Radius authentication server here. Default setting is 1812.
RADIUS Server Password:	Please input the password of your Radius authentication server here.

After you finish with all settings, please click 'Apply' button, and the following message will be displayed on your web browser:

Save setting successfully!

You may press CONTINUE button to continue configuring other settings or press APPLY button to restart the system for changes to take effect

Please click 'Continue' to back to previous setup menu; to continue on other setup procedures, or click 'Apply' to reboot the router so the settings will take effect (Please wait for about 50 seconds while router is rebooting).

2-7-4 Wireless Access Control

This function will help you to prevent unauthorized users from connecting to your wireless router; only those wireless devices who have the MAC address you assigned here can gain access to your wireless router. You can use this function with other security measures described in previous section, to create a safer wireless environment.

Up to 20 MAC addresses can be assigned by using this function. Please click 'Wireless' menu on the left of web management interface, then click 'Access Control', and the following message will be displayed on your web browser:

All allowed MAC addresses will be displayed in 'MAC Address Filtering Table', and Here are descriptions of every setup items:

Delete Selected:	If you want to delete a specific MAC address entry, check the 'select' box of the MAC address you want to delete, then click 'Delete Selected' button. (You can select more than one MAC addresses).
Delete All:	If you want to delete all MAC addresses listed here, please click 'Delete All' button.
Reset:	You can also click 'Reset' button to unselect all MAC addresses.
Enable Wireless Access Control:	To enforce MAC address filtering, you have to check 'Enable Wireless Access Control'. When this item is unchecked, wireless router will not enforce MAC address filtering of wireless clients.
MAC Address:	Input the MAC address of your wireless devices here, dash (-) or colon (:) are not required. (i.e. If the MAC address label of your wireless device indicates 'aa-bb-cc-dd-ee-ff' or 'aa:bb:cc:dd:ee:ff', just input 'aabbccddeeff').
Comment:	You can input any text here as the comment of this MAC address, like 'ROOM 2A Computer' or anything. You can input up to 16 alphanumerical characters here. This is optional and you can leave it blank, however, it's recommended to use this field to write a comment for every MAC addresses as a memory aid.
Add:	Click 'Add' button to add the MAC address and associated comment to the MAC address filtering table.
Clear:	Click 'Clear' to remove the value you inputted in MAC address and comment field.

After you finish with all settings, please click 'Apply' button, and the following message will be displayed on your web browser:

Please click 'Continue' to back to previous setup menu; to continue on other setup procedures, or click 'Apply' to reboot the router so the settings will take effect (Please wait for about 50 seconds while router is rebooting).

If you want to reset all settings in this page back to previously-saved value, please click 'Cancel' button.

2-7-5 Wi-Fi Protected Setup (WPS)

Wi-Fi Protected Setup (WPS) is the simplest way to build connection between wireless network clients and this wireless router. You don't have to select encryption mode and input a long encryption passphrase every time when you need to setup a wireless client, you only have to press a button on wireless client and this wireless router, and the WPS will do the rest for you.

This wireless router supports two types of WPS: Push-Button Configuration (PBC), and PIN code. If you want to use PBC, you have to push a specific button on the wireless client to start WPS mode, and switch this wireless router to WPS mode too. You can push Reset/WPS button of this wireless router, or click 'Start PBC' button in the web configuration interface to do this; if you want to use PIN code, you have to know the PIN code of wireless client and switch it to WPS mode, then provide the PIN code of the wireless client you wish to connect to this wireless router. The detailed instructions are listed follow:

Please click 'Wireless' menu on the left of web management interface, then click 'WPS', and the following message will be displayed on your web browser:

Enable WPS

- Wi-Fi Protected Setup Information**

WPS Status:	Configured
Self PinCode:	26460482
SSID	WPS-Enabled
Authentication Mode	Disable
- Device Configure**

Configure via Push Button:	<input type="button" value="Start PBC"/>
Configure via Client PinCode:	<input type="text"/> <input type="button" value="Start PIN"/>

Here are descriptions of every setup items:

Enable WPS:	Check this box to enable WPS function, uncheck it to disable WPS.
Wi-Fi Protected Setup Information here:	<p>WPS-related system information will be displayed</p> <p>WPS Status: If the wireless security (encryption) function of this wireless router is properly set, you'll see 'Configured' message here. If wireless security function has not been set, you'll see 'unConfigured'.</p> <p>Self PIN code: This is the WPS PIN code of this wireless router. This code is useful when you need to build wireless connection by WPS with other WPS-enabled wireless devices.</p> <p>SSID: The SSID of this wireless router will be displayed here.</p> <p>Authentication Mode: The wireless security authentication mode of this wireless router will be displayed here.</p>
Configure via Push Button:	Click 'Start PBC' to start Push-Button style WPS setup procedure. This wireless router will wait for WPS requests from wireless clients for 2 minutes. The 'WLAN' LED on the wireless router will be steady on when this wireless router is waiting for incoming WPS request.
Configure via client PinCode:	Please input the PIN code of the wireless client you wish to connect, and click 'Start PIN' button. The 'WLAN' led on the wireless router will be steady on when this wireless router is waiting for incoming WPS request.

2-7-6 Security Tips for Wireless Network

Here are some quick tips to help you improve the security level of your wireless network:

1. Do not use 100% radio output power unless it's necessary; higher output power means border wireless coverage, but if you're not using this wireless router in a really big space, you'll let your neighbors have the chance to do something bad to your network. If the wireless router is not far away from your computer, try to start from 10% Tx Power setting in 'Advance Settings' menu, and only raise the Tx Power setting when it's required.
2. Never use simple words (like school, apple, computer) as WEP encryption or WPA passphrase.
3. A complicated (the combination of number, alphabet, even symbol, and long enough) WEP key and WPA passphrase is much safer than simple and short ones. Remember that the wireless client is capable to keep the key or passphrase for you, so you only have to input the complicated key or passphrase once. It's not too trouble but will greatly improve security level.
4. You can hide the ESSID of this router by set 'Broadcast ESSID' option to 'Disable'. Your wireless router will not be found by other people in proximity if they're just using the AP scanning function of their wireless client, and this can reduce the chance of being intruded.
5. Use 'Access Control' function described in section 2-7-4, so those people who are not in your list will not be able to connect to your network.

CHAPTER III ADVANCED FUNCTIONS

3-1 Quality of Service (QoS)

Quality of service provides an efficient way for computers on the network to share the internet bandwidth with a promised quality of internet service. Without QoS, all computers and devices on the network will compete with each other to get internet bandwidth, and some applications which require guaranteed bandwidth (like video streaming and network telephone) will be affected, therefore an unpleasing result will occur, like the interruption of video / audio transfer.

With this function, you can limit the maximum bandwidth or give a guaranteed bandwidth for a specific computer, to avoid said unpleasing result from happening.

3-1-1 Basic QoS Settings

Please follow the following instructions to set QoS parameters:

Please click 'Qos' menu on the left of web management interface and the following message will be displayed on your web browser:

Here are descriptions of every settings:

Enable QoS:	Check this box to enable QoS function, unselect this box if you don't want to enforce QoS bandwidth limitations.
Total Download Bandwidth:	You can set the limit of total download bandwidth in kbits. To disable download bandwidth limitation, input '0' here.
Total Upload Bandwidth:	You can set the limit of total upload bandwidth in kbits. To disable upload bandwidth limitation, input '0' here.
Current QoS Table:	All existing QoS rules will be displayed here.
Add:	Click 'add' button to add a new QoS rule, see section 3-1-2 'Add a new QoS rule' below.
Edit:	If you want to modify the content of a specific rule, please check the 'select' box of the rule you want to edit, then click 'Edit' button. Only one rule should be selected a time! If you didn't select a rule before clicking 'Edit' button, you'll be prompted to add a new rule.
Delete Selected:	You can delete selected rules by clicking this button. You can select one or more rules to delete by check the 'select' the box of the rule(s) you want to delete a time. If the QoS table is empty, this button will be grayed out and can not be clicked.
Delete All:	By clicking this button, you can delete all rules currently in the QoS table. If the QoS table is empty, this button will be grayed out and can not be clicked.
Move Up:	You can pull up the priority of the QoS rule you selected by clicking this button.
Move Down:	You can lower the priority of the QoS rule you selected by clicking this button.
Reset:	If you want to erase all values you just entered. Click 'Reset'.

After you finish with all settings, please click 'Apply' button, and the following message will be displayed on your web browser:

Please click 'Continue' to back to previous setup menu; to continue on other setup procedures, or click 'Apply' to reboot the router so the settings will take effect (Please wait for about 50 seconds while router is rebooting).

If you want to reset all settings in this page back to previously-saved value, please click 'Cancel' button.

3-1-2 Add a new QoS rule

After you click 'Add' button in QoS menu, the following message will appear:

Rule Name :	<input type="text"/>
Bandwidth :	Download <input type="button" value="v"/> <input type="text"/> Kbps <input type="button" value="v"/> guarantee <input type="button" value="v"/>
Local IP Address :	<input type="text"/> - <input type="text"/>
Local Port Range :	<input type="text"/>
Remote IP Address :	<input type="text"/> - <input type="text"/>
Remote Port Range :	<input type="text"/>
Traffic Type :	None <input type="button" value="v"/>
Protocol :	TCP <input type="button" value="v"/>
<input type="button" value="Save"/> <input type="button" value="Reset"/>	

Here are descriptions of every setup items:

Rule Name:	Please give a name to this QoS rule (up to 15 alphanumerical characters)
Bandwidth:	Set the bandwidth limitation of this QoS rule. You have to select the data direction of this rule (Upload of Download), and the speed of bandwidth limitation in Kbps, then select the type of QoS: 'guarantee' (guaranteed usable bandwidth for this rule) or 'max' (set the maximum bandwidth for the application allowed by this rule).
Local IP Address:	Specify the local (source) IP address that will be affected by this rule. Please input the starting IP address in the left field, and input the end IP address in the right field to define a range of IP addresses, or just input the IP address in the left field to define a single IP address.
Local Port Range:	Please input the range of local (source) port number that will be affected by this rule. If you want to apply this rule on port 80 to 90, please input '80-90'; if you want to apply this rule on a single port, just input the port number, like '80'.
Remote IP Address:	Specify the remote (destination) IP address that will be affected by this rule. Please input the starting IP address in the left field, and input the end IP address in the right field to define a range of IP addresses, or just input the IP address in the left field to define a single IP address.
Remote Port Range:	Please input the range of remote (destination) port number that will be affected by this rule. If you want to apply this rule on port 80 to 90, please input '80-90'; if you want to apply this rule on a single port, just input the port number, like '80'. If the remote (destination) IP address and /or port number is universal, just leave it blank.
Traffic Type:	Please select the traffic type of this rule, available options are None, SMTP, HTTP, POP3, and FTP. You can select a specific traffic type for this rule, if you want to make this rule as a IP address based rule (apply the limitation on all traffics from / to the specified IP address / port number), select 'None'.
Protocol:	Please select the protocol type of this rule, available options are TCP and UDP. If you don't know what protocol your application uses, please try 'TCP' first, and switch to 'UDP' if this rule doesn't seems to work.

After you finish with all settings, please click 'save' button, you'll be brought back to previous menu, and the rule you just set will appear in current QoS table; if you did anything wrong, you'll get an error message when you click 'Save' button, please correct your input by the instructions given by the error message.

If you want to erase all values you just entered. Click 'Reset'

3-2 Network Address Translation (NAT)

Network address translations solve the problem if sharing a single IP address to multiple computers. Without NAT, all computers must be assigned with a valid Internet IP address to get connected to Internet, but Internet service providers only provide very few IP addresses to every user. Therefore it's necessary to use NAT technology to share a single Internet IP address to multiple computers on local network, so everyone can get connected to Internet.

Please follow the following instructions to set NAT parameters:

3-2-1 Basic NAT Settings (Enable or disable NAT function)

Please click 'NAT' menu on the left of web management interface, and the following message will be displayed on your web browser:

NAT Settings

Network Address Translation (NAT) allows multiple users at your local site to access the Internet through a single Public IP Address or multiple Public IP Addresses. NAT provides Firewall protection from hacker attacks and has the flexibility to allow you to map Private IP Addresses to Public IP Addresses for key services such as the Web or FTP.

Enable or disable NAT module function : Enable Disable

Enable or disable Fast NAT module function : Enable Disable

To enable NAT function, please select 'Enable' for 'Enable or disable NAT module function' ; to disable, please select 'Disable'.

After you made the selection, please click 'Apply' button, and the following message will be displayed on your web browser:

Save setting successfully!

You may press CONTINUE button to continue configuring other settings or press APPLY button to restart the system for changes to take effect

Please click 'Continue' to back to previous setup menu; to continue on other setup procedures, or click 'Apply' to reboot the router so the settings will take effect (Please wait for about 50 seconds while router is rebooting).

3-2-2 Port Forwarding

This function allows you to redirect a single port or consecutive ports of Internet IP address to the same port of the IP address on local network. The port number(s) of Internet IP address and private IP address (the IP address on local network) must be the same. If the port number of Internet IP address and private IP address is different, please use 'Virtual Server' function, described in next section. Please click 'NAT' menu on the left of web management interface, then click 'Port Forwarding', and the following message will be displayed on your web browser:

Enable Port Forwarding

Private IP	Type	Port Range	Comment
<input type="text"/>	Both <input type="button" value="v"/>	<input type="text"/> - <input type="text"/>	<input type="text"/>

Current Port Forwarding Table

NO.	Private IP	Type	Port Range	Comment	Select
1	192.168.2.200	TCP+UDP	80-90	LAB Computer	<input type="checkbox"/>

Here are descriptions of every setup items:

Enable Port Forwarding:	Check this box to enable port mapping, and uncheck this box to disable port mapping.
Private IP:	Input the IP address of the computer on local network which provides internet service.
Type:	Select the type of connection, TCP or UDP. If you're not sure, please select 'Both'.
Port Range:	Input the starting port number in the left field, and input the ending port number in the right field. If you only want to redirect a single port number, just fill the port number in the left field.
Comment:	Please input any text to describe this mapping, up to 16 alphanumerical characters.
Add:	Add the mapping to port forwarding table.
Reset:	Remove all inputted values.
Port Forwarding Table:	All existing port forwarding mappings will be displayed here.
'Delete Selected':	Please select a port forwarding mapping by clicking the 'Select' box of the mapping, then click 'Delete Selected' button to remove the mapping. If there's no existing mapping, this button will be grayed out.
Delete All:	Delete all mappings existed in virtual server table.
Reset:	Unselect all mappings.

After you finish with all settings, please click 'Apply' button, and the following message will be displayed on your web browser:

Save setting successfully!

You may press CONTINUE button to continue configuring other settings or press APPLY button to restart the system for changes to take effect

Please click 'Continue' to back to previous setup menu; to continue on other setup procedures, or click 'Apply' to reboot the router so the settings will take effect (Please wait for about 50 seconds while router is rebooting).

If you want to reset all settings in this page back to previously-saved value, please click 'Cancel' button.

3-2-3 Virtual Server

This function allows you to redirect a port on Internet IP address (on WAN port) to a specified port of an IP address on local network, so you can setup an Internet service on the computer on local network, without exposing it on Internet directly. You can also build many sets of port redirection, to provide many different Internet services on different local computers via a single Internet IP address.

Please click 'NAT' menu on the left of web management interface, then click 'Virtual Server', and the following message will be displayed on your web browser:

Enable Virtual Server

Private IP	Private Port	Type	Public Port	Comment
<input type="text"/>	<input type="text"/>	Both ▾	<input type="text"/>	<input type="text"/>

Current Virtual Server Table

NO.	Private IP	Private Port	Type	Public Port	Comment	Select
1	192.168.2.200	80	TCP+UDP	80	Web Server	<input type="checkbox"/>

Here are descriptions of every setup items:

Enable Virtual Server:	Check this box to enable virtual server, and uncheck this box to disable virtual server.
Private IP:	Input the IP address of the computer which provides Internet service.
Private Port:	Input the port number of the IP address which provides Internet service.
Type:	Select the type of connection, TCP or UDP. If you're not sure, please select 'Both'.
Public Port:	Please select the port number of Internet IP address which will be redirected to the port number of local IP address defined above.
Comment:	Please input any text to describe this mapping, up to 16 alphanumerical characters.
Add:	Add the mapping to virtual server table.
Reset:	Remove all inputted values.
Virtual Server Table:	All existing virtual server mappings will be displayed here.
Delete Selected:	Please select a virtual server mapping by clicking the 'Select' box of the mapping, then click 'Delete Selected' button to remove the mapping. If there's no existing mapping, this button will be grayed out.
Delete All:	Delete all mappings existed in virtual server table.
Reset:	Unselect all mappings.

After you finish with all settings, please click 'Apply' button, and the following message will be displayed on your web browser:

Save setting successfully!

You may press CONTINUE button to continue configuring other settings or press APPLY button to restart the system for changes to take effect

Please click 'Continue' to back to previous setup menu; to continue on other setup procedures, or click 'Apply' to reboot the router so the settings will take effect (Please wait for about 50 seconds while router is rebooting).

If you want to reset all settings in this page back to previously-saved value, please click 'Cancel' button.

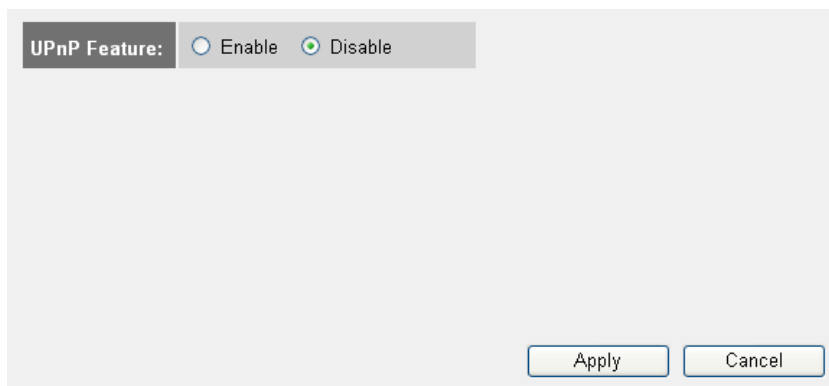
3-2-4 Port Mapping for Special Applications

Some applications require more than one connection a time; these applications won't work with simple NAT rules. In order to make these applications work, you can use this function to let these applications work.

3-2-5 UPnP Setting

This function enables network auto-configuration for peer-to-peer communications, with this function, network devices will be able to communicate with other devices directly, and learn about information about other devices. Many network device and applications rely on UPnP function nowadays.

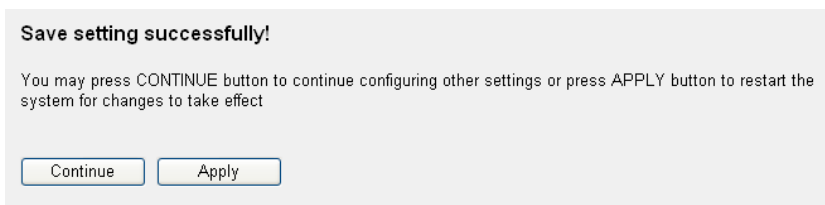
Please click 'NAT' menu on the left of web management interface, then click 'UPnP', and the following message will be displayed on your web browser:



UPnP Feature: Enable Disable

Apply Cancel

There is only one option in this page, please select 'Enable' or 'Disable' to enable or disable UPnP function, then click 'Apply' button, and the following message will be displayed on your web browser:



Save setting successfully!

You may press CONTINUE button to continue configuring other settings or press APPLY button to restart the system for changes to take effect

Continue Apply

Please click 'Continue' to back to previous setup menu; to continue on other setup procedures, or click 'Apply' to reboot the router so the settings will take effect (Please wait for about 50 seconds while router is rebooting).

If you want to reset all settings in this page back to previously-saved value, please click 'Cancel' button.

3-2-6 ALG Settings

Application Layer Gateway (ALG) is a special function of this router. It includes many preset routing rules for numerous applications which require special support. With these supports, those applications which required special support will be able to work with NAT architecture.

Please click 'NAT' menu on the left of web management interface, then click 'ALG Settings', and the following message will be displayed on your web browser:

Enable	Name	Comment
<input checked="" type="checkbox"/>	Amanda	Support for Amanda backup tool protocol.
<input checked="" type="checkbox"/>	Egg	Support for eggdrop bot networks.
<input checked="" type="checkbox"/>	FTP	Support for FTP.
<input checked="" type="checkbox"/>	H323	Support for H323/netmeeting.
<input checked="" type="checkbox"/>	IRC	Allows DCC to work though NAT and connection tracking.
<input checked="" type="checkbox"/>	MMS	Support for Microsoft Streaming Media Services protocol.
<input checked="" type="checkbox"/>	Quake3	Support for Quake III Arena connection tracking and nat.
<input checked="" type="checkbox"/>	Talk	Allows netfilter to track talk connections.
<input checked="" type="checkbox"/>	TFTP	Support for TFTP.
<input checked="" type="checkbox"/>	Starcraft	Support for Starcraft/Battle.net game protocol.
<input checked="" type="checkbox"/>	MSN	Support for MSN file tranfer.
<input checked="" type="checkbox"/>	IPset	Support for IPset password

There are many applications listed here. Please check the box of the special support for applications you need, and then click 'Apply' button, and the following message will be displayed on your web browser:

Save setting successfully!

You may press CONTINUE button to continue configuring other settings or press APPLY button to restart the system for changes to take effect

Please click 'Continue' to back to previous setup menu; to continue on other setup procedures, or click 'Apply' to reboot the router so the settings will take effect (Please wait for about 50 seconds while router is rebooting).

If you want to reset all settings in this page back to previously-saved value, please click 'Cancel' button.

3-3 Firewall

Excepting NAT, this router also provides firewall function to block malicious intruders from accessing your computers on local network. These functions include inbound attack prevention, and block outbound traffics, like block URLs which have pre-defined keywords.

Please follow the following instructions to enable or disable firewall function:

Please click 'Firewall' menu on the left of web management interface, and the following message will be displayed on your web browser:

Security Settings (Firewall)

The Broadband router provides extensive firewall protection by restricting connection parameters, thus limiting the risk of hacker attack, and defending against a wide array of common attacks. However, for applications that require unrestricted access to the Internet, you can configure a specific client/server as a Demilitarized Zone (DMZ).

Enable or disable Firewall module function Enable Disable

Please select 'Enable' or 'Disable' to enable or disable firewall function of this router, the click 'Apply' button, and the following message will be displayed on your web browser:

Save setting successfully!

You may press CONTINUE button to continue configuring other settings or press APPLY button to restart the system for changes to take effect

Please click 'Continue' to back to previous setup menu; to continue on other setup procedures, or click 'Apply' to reboot the router so the settings will take effect (Please wait for about 50 seconds while router is rebooting).

3-3-1 Access Control

This function allows or denies computers with specific MAC address from connecting to the network; it can also allow or deny computers with specific IP address, protocol, or port.

Please click 'Firewall' menu on the left of web management interface, then click 'Access Control', and the following message will be displayed on your web browser:

Enable MAC Filtering
 Deny
 Allow

Client PC MAC address	Comment
<input type="text"/>	<input type="text"/>

MAC Filtering Table

NO.	Client PC MAC address	Comment	Select
1	11:22:33:44:55:66	LAB Computer	<input type="checkbox"/>

Enable IP Filtering Table (up to 20 computers)
 Deny
 Allow

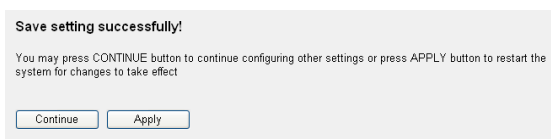
NO.	Client PC Description	Client PC IP address	Client Service	Protocol	Port Range	Select
1	LAB PC	192.168.2.200	TCP, UDP			<input type="checkbox"/>

Here are descriptions of every setup items:

Enable MAC Filtering:	Check this box to enable MAC address based filtering, and please select 'Deny' or 'Allow' to decide the behavior of MAC filtering table. If you select deny, all MAC addresses listed in filtering table will be denied from connecting to the network; if you select allow, only MAC addresses listed in filtering table will be able to connect to the network, and rejecting all other network devices.
Client PC MAC address:	Please input the MAC address of computer or network device here, dash (-) or colon (:) are not required. (i.e. If the MAC address label of your wireless device indicates 'aa-bb-cc-dd-ee-ff' or 'aa:bb:cc:dd:ee:ff', just input 'aabbccddeeff')
Comment:	You can input any text here as the comment of this MAC address, like 'ROOM 2A Computer' or anything. You can input up to 16 alphanumerical characters here. This is optional and you can leave it blank, however, it's recommended to use this field to write a comment for every MAC addresses as a memory aid.
Add:	Click 'Add' button to add the MAC address and associated comment to the MAC address filtering table.
Reset:	Remove all inputted values.
MAC Filtering Table:	All existing MAC addresses in filtering table will be listed here.
Delete Selected:	If you want to delete a specific MAC address entry, check the 'select' box of the MAC address you want to delete, then click 'Delete Selected' button. (You can select more than one MAC addresses).
Delete All:	If you want to delete all MAC addresses listed here, please click 'Delete All' button.
Reset:	You can also click 'Reset' button to unselect all MAC addresses.

Enable IP Filtering Table:	Check this box to enable IP address based filtering, and please select 'Deny' or 'Allow' to decide the behavior of IP filtering table. If you select deny, all IP addresses listed in filtering table will be denied from connecting to the network; if you select allow, only IP addresses listed in filtering table will be able to connect to the network, and rejecting all other network devices.
IP Filtering Table:	All existing IP addresses in filtering table will be listed here.
Add PC:	Click this button to add a new IP address to IP filtering table, up to 20 IP addresses can be added. Please refer to section 3-3-1-1 'Add PC' below.
Delete Selected:	If you want to delete a specific IP address entry, check the 'select' box of the IP address you want to delete, then click 'Delete Selected' button. (You can select more than one IP addresses).
Delete All:	If you want to delete all IP addresses listed here, please click 'Delete All' button.

After you finish with all settings, please click 'Apply' button, and the following message will be displayed on your web browser:



Please click 'Continue' to back to previous setup menu; to continue on other setup procedures, or click 'Apply' to reboot the router so the settings will take effect (Please wait for about 50 seconds while router is rebooting).

If you want to reset all settings in this page back to previously-saved value, please click 'Cancel' button.

3-3-1-1 Add PC

After button is clicked, the following message will be displayed on your web browser:

Client PC Description :	<input type="text"/>	
Client PC IP address :	<input type="text"/> - <input type="text"/>	
Client PC Service :		
Service Name	Detail Description	Select
WWW	HTTP, TCP Port 80, 3128, 8000, 8080, 8081	<input type="checkbox"/>
E-mail Sending	SMTP, TCP Port 25	<input type="checkbox"/>
News Forums	NNTP, TCP Port 119	<input type="checkbox"/>
E-mail Receiving	POP3, TCP Port 110	<input type="checkbox"/>
Secure HTTP	HTTPS, TCP Port 443	<input type="checkbox"/>
File Transfer	FTP, TCP Port 21	<input type="checkbox"/>
MSN Messenger	TCP Port 1863	<input type="checkbox"/>
Telnet Service	TCP Port 23	<input type="checkbox"/>
AIM	AOL Instant Messenger, TCP Port 5190	<input type="checkbox"/>
NetMeeting	H.323, TCP Port 389,522,1503,1720,1731	<input type="checkbox"/>
DNS	UDP Port 53	<input type="checkbox"/>
SNMP	UDP Port 161, 162	<input type="checkbox"/>
VPN-PPTP	TCP Port 1723	<input type="checkbox"/>
VPN-L2TP	UDP Port 1701	<input type="checkbox"/>
TCP	All TCP Port	<input type="checkbox"/>
UDP	All UDP Port	<input type="checkbox"/>
User Define Service		
Protocol:	<input type="text" value="Both"/>	
Port Range:	<input type="text"/>	
<input type="button" value="Add"/> <input type="button" value="Reset"/>		

Here are descriptions of every setup items:

Client PC Description:	Please input any text to describe this IP address, up to 16 alphanumerical characters.
Client PC IP address:	Please input the starting IP address in the left field, and input the end IP address in the right field to define a range of IP addresses, or just input the IP address in the left field to define a single IP address.
Client PC Service:	Please check all services you want to allow or deny this IP address to use, you can check multiple services.
Protocol:	If the service you need is not listed above, you can create a new service on your own. Please select TCP or UDP, if you're not sure, please select 'Both'.
Port Range:	Please input the port range of new service here. If you want to specify port 80 to 90, please input '80-90'; if you want to apply this rule on a single port, just input the port number, like '80'.
Add:	When you finish with all settings, please click 'Add' to save settings, you'll be brought back to previous menu, and the rule you just set will appear in current IP filtering table.

If you want to remove all settings in this page, click 'Reset' button.

3-3-2 URL Blocking

If you want to prevent computers in local network from accessing certain website (like pornography, violence, or anything you want to block), you can use this function to stop computers in local network from accessing the site you defined here. This function is useful for parents and company managers. Please follow the following instructions to set URL blocking parameters:

Please click 'Firewall' menu on the left of web management interface, then click 'URL Blocking', and the following message will be displayed on your web browser:

Enable URL Blocking

URL/Keyword

Current URL Blocking Table

NO.	URL/Keyword	Select
1	www.playboy.com	<input type="checkbox"/>

Here are descriptions of every setup items:

Enable URL Blocking:	Check this box to enforce URL Blocking, uncheck it to disable URL Blocking.
URL/Keyword:	Input the URL (host name or IP address of website, like http://www.blocked-site.com or http://11.22.33.44), or the keyword which is contained in URL (like pornography, cartoon, stock, or anything).
Add:	Click 'Add' button to add the URL / keyword to the URL / Keyword filtering table.
Reset:	Click 'Reset' to remove the value you inputted in URL/Keyword field.
Current URL Blocking Table:	All existing URL/Keywords in filtering table will be listed here.
Delete Selected:	If you want to delete a specific URL/Keyword entry, check the 'select' box of the MAC address you want to delete, then click 'Delete Selected' button. (You can select more than one MAC addresses).
Delete All:	If you want to delete all URL/Keyword listed here, please click 'Delete All' button.
Reset:	You can also click 'Reset' button to unselect all URL/Keywords.

After you finish with all settings, please click 'Apply' button, and the following message will be displayed on your web browser:

Save setting successfully!

You may press CONTINUE button to continue configuring other settings or press APPLY button to restart the system for changes to take effect

Please click 'Continue' to back to previous setup menu; to continue on other setup procedures, or click 'Apply' to reboot the router so the settings will take effect (Please wait for about 50 seconds while router is rebooting).

If you want to reset all settings in this page back to previously-saved value, please click 'Cancel' button.

3-3-3 DoS Attack Prevention

Denial of Service (DoS) is a common attack measure, by transmitting a great amount of data or request to your Internet IP address and server, the Internet connection will become very slow, and server may stop responding because it is not capable to handle too much traffics.

This router has a built-in DoS attack prevention mechanism; when you activate it, the router will stop the DoS attack for you. Please follow the following instructions to set DoS prevention parameters:

Please click 'Firewall' menu on the left of web management interface, then click 'DoS', and the following message will be displayed on your web browser:

Denial of Service Feature

Ping of Death	<input type="checkbox"/>
Discard Ping From WAN	<input type="checkbox"/>
Port Scan	<input type="checkbox"/>
Sync Flood	<input type="checkbox"/>

Here are descriptions of every setup items:

Ping of Death:	Ping of Death is a special packet, and it will cause certain computer to stop responding. Check this box and the router will filter this kind of packet out.
Discard Ping From WAN:	Ping is a common and useful tool to know the connection status of a specified remote network device, but some malicious intruder will try to fill your network bandwidth with a lot of PING request data packet, to make your internet connection become very slow, even unusable. Check this box and the router will ignore all inbound PING request, but when you activate this function, you will not be able to ping your own router from internet, too.
Port Scan:	Some malicious intruder will try to use a 'port scanner' to know how many ports of your Internet IP address are open, and they can collect a lot of valuable information by doing so. Check this box and the router will block all traffics which are trying to scan your Internet IP address.
Sync Flood:	This is another kind of attack, which uses a lot of fake connection request to consume the memory of your server, and try to make your server become unusable. Check this box and the router will filter this kind of traffic out.
Advanced Settings:	Click this button and you can set advanced settings of the DoS prevention method listed above, please see section 3-3-3-1 'DoS – Advanced Settings' below.

After you finish with all settings, please click 'Apply' button, and the following message will be displayed on your web browser:

Save setting successfully!

You may press CONTINUE button to continue configuring other settings or press APPLY button to restart the system for changes to take effect

Please click 'Continue' to back to previous setup menu; to continue on other setup procedures, or click 'Apply' to reboot the router so the settings will take effect (Please wait for about 50 seconds while router is rebooting).

If you want to reset all settings in this page back to previously-saved value, please click 'Cancel' button.

3-3-3-1 DoS - Advanced Settings

When you click 'Advanced' button in DoS menu, the following message will be displayed on your web browser:

Denial of Service Feature

<input type="checkbox"/> Ping of Death	5 Packet(S) Per Second Burst 5
<input type="checkbox"/> Discard Ping From WAN	
<input type="checkbox"/> Port Scan	<input checked="" type="checkbox"/> NMAP FIN / URG / PSH <input checked="" type="checkbox"/> Xmas tree <input checked="" type="checkbox"/> Another Xmas tree <input checked="" type="checkbox"/> Null scan <input checked="" type="checkbox"/> SYN / RST <input checked="" type="checkbox"/> SYN / FIN <input checked="" type="checkbox"/> SYN (only unreachable port)
<input type="checkbox"/> Sync Flood	5 Packet(S) Per Second Burst 5

Here are descriptions of every setup items:

Ping of Death:	Set the threshold of when this DoS prevention mechanism will be activated. Please check the box of Ping of Death, and input the frequency of threshold (how many packets per second, minute, or hour), you can also input the 'Burst' value, which means when this number of 'Ping of Death' packet is received in very short time, this DoS prevention mechanism will be activated.
Discard Ping From WAN:	Check the box to activate this DoS prevention mechanism.
Port Scan:	Many kind of port scan methods are listed here, please check one or more DoS attack methods you want to prevent.
Sync Flood:	Like Ping of Death, you can set the threshold of when this DoS prevention mechanism will be activated.

After you finish with all settings, please click 'Apply' button, and the following message will be displayed on your web browser:

Save setting successfully!

You may press CONTINUE button to continue configuring other settings or press APPLY button to restart the system for changes to take effect

Please click 'Continue' to back to previous setup menu; to continue on other setup procedures, or click 'Apply' to reboot the router so the settings will take effect (Please wait for about 50 seconds while router is rebooting).

If you want to reset all settings in this page back to previously-saved value, please click 'Cancel' button.

3-3-4 Demilitarized Zone (DMZ)

Demilitarized Zone (DMZ) refers to a special area in your local network. This area resides in local network, and all computers in this area uses private IP address, too. But these private IP addresses are mapped to a certain Internet IP address, so other people on Internet can fully access those computers in DMZ.

Please follow the following instructions to set DMZ parameters:

Please click 'Firewall' menu on the left of web management interface, then click 'DMZ', and the following message will be displayed on your web browser:

Enable DMZ

Public IP address		Client PC IP address
<input checked="" type="radio"/> Dynamic IP Session 1 ▾	<input type="text"/>	<input type="text"/>
<input type="radio"/> Static IP <input type="text"/>	<input type="text"/>	<input type="text"/>
<input type="button" value="Add"/> <input type="button" value="Reset"/>		

Current DMZ Table

NO.	Public IP address	Client PC IP address	Select
1	192.168.100.1	192.168.2.100	<input type="checkbox"/>

Here are descriptions of every setup items:

Enable DMZ:	Check this box to enable DMZ function, uncheck this box to disable DMZ function.
Public IP address:	You can select 'Dynamic IP' or 'Static IP' here. If you select 'Dynamic IP', you have to select an Internet connection session from dropdown menu; if you select 'Static IP', please input the IP address that you want to map to a specific private IP address.
Client PC IP address:	Please input the private IP address that the Internet IP address will be mapped to.
Add:	Click 'Add' button to add the public IP address and associated private IP address to the DMZ table.
Reset:	Click 'Clear' to remove the value you inputted in Public IP address and Client PC IP address field.
Current DMZ table:	All existing public IP address and private IP address mapping will be displayed here.
Delete Selected:	If you want to delete a specific DMZ entry, check the 'select' box of the DMZ entry you want to delete, then click 'Delete Selected' button. (You can select more than one DMZ entries).
Delete All:	If you want to delete all DMZ entries listed here, please click 'Delete All' button.
Reset:	You can also click 'Reset' button to unselect all DMZ entries.

After you finish with all settings, please click 'Apply' button, and the following message will be displayed on your web browser:

Save setting successfully!

You may press CONTINUE button to continue configuring other settings or press APPLY button to restart the system for changes to take effect

Please click 'Continue' to back to previous setup menu; to continue on other setup procedures, or click 'Apply' to reboot the router so the settings will take effect (Please wait for about 50 seconds while router is rebooting).

If you want to reset all settings in this page back to previously-saved value, please click 'Cancel' button.


3-4 System Status

The functions described here will provide you with system related information. To enter system status menu, please either click 'Status' link located at the upper-right corner of web management interface, or click 'Status' button in main menu.

3-4-1 System information and firmware version

You can use this function to know the system information and firmware version of this router.

Please click 'Status' link located at the upper-right corner of web management interface, and the following message will be displayed on your web browser

Status and Information 

You can use the Status page to monitor the connection status for the Broadband router's; WAN/LAN interfaces, firmware and hardware version numbers, any illegal attempts to access your network, and information on all DHCP client PCs currently connected to your network.

System

	Model	Wireless Router
	Up time	2day:8h:19m:9s
	Hardware Version	Rev. A
	Boot Code Version	1.0
	Runtime Code Version	0.71

NOTE: Information displayed here may vary.

3-4-2 Internet Connection Status

You can use this function to know the status of current Internet connection.

Please click 'Internet Connection' menu on the left of web management interface, and the following message will be displayed on your web browser:

Attain IP Protocol :	Fixed IP connect
IP Address :	172.1.1.1
Subnet Mask :	255.255.0.0
Default Gateway :	172.1.1.2
MAC Address :	00:60:64:2E:AA:07
Primary DNS :	168.95.1.1
Secondary DNS :	

This information will vary depending on the connection status.

3-4-3 Device Status

You can use this function to know the status of your router.

Please click 'Device Status' menu on the left of web management interface, and the following message will be displayed on your web browser:

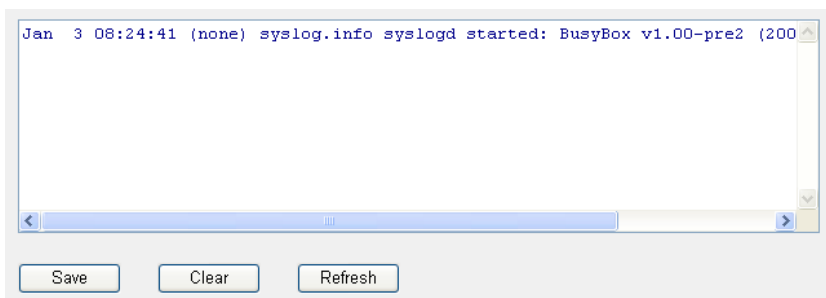
Wireless Configuration	
Mode	AP
ESSID	wireless
Channel Number	11
Security	WEP
LAN Configuration	
IP Address	192.168.1.1
Subnet Mask	255.255.255.0
DHCP Server	Enable
MAC Address	00:60:64:2e:aa:06

This information will vary depending on the device status.

3-4-4 System Log

All important system events are logged. You can use this function to check the event log of your router.

Please click 'System Log' menu on the left of web management interface, and the following message will be displayed on your web browser:



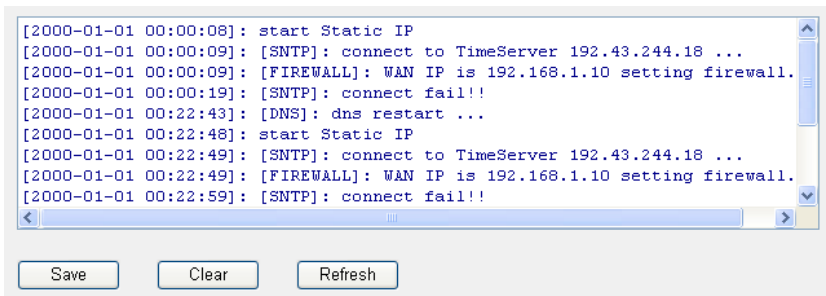
The system events will be displayed in this page, and here are descriptions of every buttons:

Save:	Save current event log to a text file.
Clear:	Delete all event logs displayed here.
Refresh:	Refresh the event log display.

3-4-5 Security Log

All information about network and system security is kept here, and you can use this function to check the security event log of your router.

Please click 'Security Log' menu on the left of web management interface, and the following message will be displayed on your web browser:



The system events will be displayed in this page, and here are descriptions of every buttons:

Save:	Save current event log to a text file.
Clear:	Delete all event logs displayed here.
Refresh:	Refresh the event log display.

3-4-5 Active DHCP client list

If you're using the DHCP server function of this router, you can use this function to check all active DHCP leases issued by this router.

Please click 'Active DHCP client' menu on the left of web management interface, and the following message will be displayed on your web browser:

IP Address	MAC Address	Time Expired(s)
192.168.2.240	00:10:60:db:52:9d	58

Below the table, there is a **Refresh** button.

All information about active DHCP leases issued by this router will be displayed here. You can click 'Refresh' button to display latest information.

3-4-6 Statistics

You can use this function to check the statistics of wireless, LAN, and WAN interface of this router.

Please click 'Statistics' menu on the left of web management interface, and the following message will be displayed on your web browser:

Wireless LAN	<i>Sent Packets</i>	0
	<i>Received Packets</i>	0
Ethernet LAN	<i>Sent Packets</i>	5119
	<i>Received Packets</i>	154638
Ethernet WAN	<i>Sent Packets</i>	98
	<i>Received Packets</i>	0

You can click 'Refresh' button to display latest information.

3-5 Configuration Backup and Restore

You can backup all configurations of this router to a file, so you can make several copied of router configuration for security reason.

To backup or restore router configuration, please follow the following instructions:

Please click 'Tool' located at the upper-right corner of web management interface, then click 'Configuration Tools' on the left of web management interface, then the following message will be displayed on your web browser:

The screenshot shows a web interface with three sections:

- Backup Settings :** A button labeled "Save..."
- Restore Settings :** A text input field followed by a "Browse..." button and an "Upload" button.
- Restore to Factory Default :** A "Reset" button.

Here are descriptions of every buttons:

Backup Settings:	Press 'Save...' button, and you'll be prompted to download the configuration as a file, default filename is 'default.bin', you can please save it as another filename for different versions, and keep it in a safe place.
Restore Settings:	Press 'Browse...' to pick a previously-saved configuration file from your computer, and then click 'Upload' to transfer the configuration file to router. After the configuration is uploaded, the router's configuration will be replaced by the file you just uploaded.
Restore to Factory Default:	Click this button to remove all settings you made, and restore the configuration of this router back to factory default settings.

3-6 Firmware Upgrade

The system software used by this router is called as 'firmware', just like any applications on your computer, when you replace the old application with a new one, your computer will be equipped with new function. You can also use this firmware upgrade function to add new functions to your router, even fix the bugs of this router.

To upgrade firmware, please follow the following instructions:

Please click 'Tool' located at the upper-right corner of web management interface, then click 'Firmware Upgrade' on the left of web management interface, then the following message will be displayed on your web browser:

This tool allows you to upgrade the Broadband router's system firmware.
Enter the path and name of the upgrade file and then click the APPLY button below. You will be prompted to confirm the upgrade.

The system will automatically reboot the router after you finished the firmware upgrade process. If you don't complete the firmware upgrade process in the "next" step, you have to reboot the router.

Next

Please click 'Next', and the following message will be displayed:

Firmware Upgrade ?

This tool allows you to upgrade the Broadband router's system firmware.
Enter the path and name of the upgrade file and then click the APPLY button below. You will be prompted to confirm the upgrade.

Browse...

Apply

Cancel

Click 'Browse' button first, you'll be prompted to provide the filename of firmware upgrade file. Please download the latest firmware file from our website, and use it to upgrade your router.

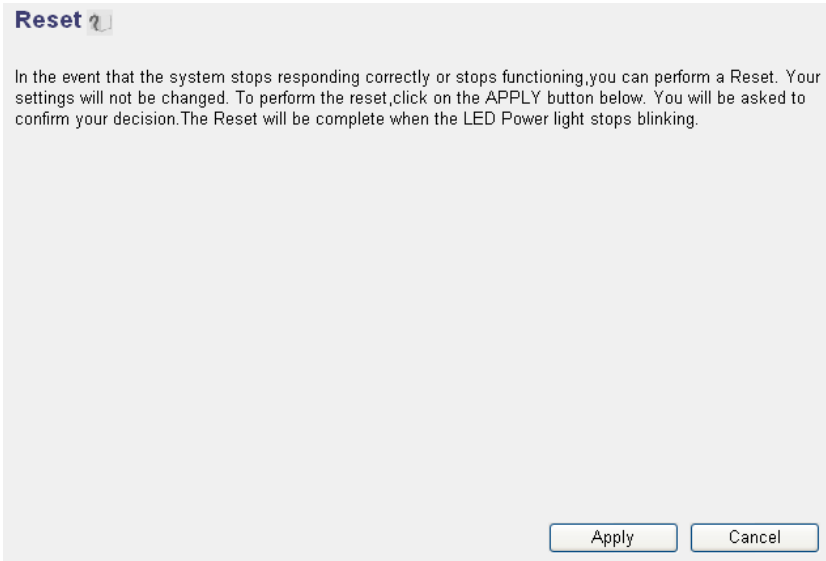
After a firmware upgrade file is selected, click 'Apply' button, and the router will start firmware upgrade procedure automatically. The procedure may take several minutes, please be patient.

NOTE: Never interrupt the upgrade procedure by closing the web browser or physically disconnect your computer from router. If the firmware you uploaded is corrupt, the firmware upgrade will fail, and you may have to return this router to the dealer of purchase to ask for help. (Warranty voids if you interrupted the upgrade procedure).

3-7 System Reset

If you think the network performance is bad, or you found the behavior of the router is strange, you can perform a router reset, sometime it will solve the problem.

To do so, please click 'Tool' located at the upper-right corner of web management interface, then click 'Reset' on the left of web management interface, then the following message will be displayed on your web browser:



Please click 'Apply' to reset your router, and it will be available again after few minutes, please be patient.

4-1 Hardware Specification

- CPU: Ralink RT1310
- Switch: Realtek RTL8305SC (5 Port Switch)
- Wireless Module: Ralink RT2860+RT2820
- Flash: 4MB
- SDRAM: 16MB
- WAN Port: 10/100M UTP Port x 1
- LAN Ports: 10/100M UTP Port x 4
- Antenna: RP-SMA Detachable Antenna x 3 (2T3R MIMO Technology)
- Power: 12VDC, 1A Switching Power Adapter
- Dimension: 30(H) x 187(W) x 100(D) mm
- Transmit Power: 16dBm \pm 2dBm
- Temperature: 32~104°F (0 ~ 40°C)
- Humidity: 10-90% (NonCondensing)
- Certification: FCC, CE

4-2 Troubleshooting

If you found the router is working improperly or stop responding to you, don't panic! Before you contact your dealer of purchase for help, please read this troubleshooting first. Some problems can be solved by you within very short time!

Router is not responding when attempting to access it by web browser

- a. Please check the connection of power cord and network cable of this router. All cords and cables should be correctly and firmly inserted to the router.
- b. If all LEDs on this router are out, please check the status of A/C power adapter, and make sure it's correctly powered.
- c. You must use the same IP address section which router uses.
- d. Are you using MAC or IP address filter? Try to connect the router by another computer and see if it works; if not, please perform a hard reset (press and hold 'reset' button for 20 seconds).
- e. Set your computer to obtain an IP address automatically (DHCP), and see if your computer can get an IP address.
- f. If you did a firmware upgrade and this happens, contact your dealer of purchase for help.
- g. If all above solutions don't work, contact the dealer of purchase for help.

Can't get connected to Internet

- a. Go to 'Status' -> 'Internet Connection' menu, and check Internet connection status.
- b. Please be patient, sometime Internet is just that slow.
- c. If you connect a computer to Internet directly before, try to do that again, and check if you can get connected to Internet with your computer directly attached to the comm. device provided by your Internet service provider.
- d. Check PPPoE / L2TP / PPTP user ID and password again.
- e. Call your Internet service provide and check if there's something wrong with their service.
- f. If you just can't connect to one or more website, but you can still use other internet services, please check URL/Keyword filter.
- g. Try to reset the router and try again later.
- h. Reset the comm. device provided by your Internet service provider too.
- i. Try to use IP address instead of hostname. If you can use IP address to communicate with a remote server, but can't use hostname, please check DNS setting.

I can't locate my router by my wireless client

- a. 'Broadcast ESSID' set to off?
- b. All three antennas are properly installed and secured?
- c. Are you too far from your router? Try to get closer.
- d. Please remember that you have to input ESSID on your wireless client manually, if ESSID broadcast is disabled.
- e. If antenna is not installed, install them now and never remove them.

File download is very slow or breaks frequently

- a. Are you using QoS function? Try to disable it and try again.
- b. Internet is slow sometimes, be patient.
- c. Try to reset the router and see if it's better after that.
- d. Try to know what computers do on your local network. If someone's transferring big files, other people will think Internet is really slow.
- e. If this never happens before, call you Internet service provider to know if there is something wrong with their network.

I can't log onto web management interface: password is wrong

- a. Make sure you're connecting to the correct IP address of the router!
- b. Password is case-sensitive. Make sure the 'Caps Lock' light is not illuminated.
- c. If you really forget the password, do a hard reset.

Router becomes hot

- a. This is not a malfunction, if you can keep your hand on the router's case.
- b. If you smell something wrong or see the smoke coming out from router or A/C power adapter, please disconnect the router and A/C power adapter from utility power (make sure it's safe before you're doing this!), and call your dealer of purchase for help.

The date and time of all event logs are wrong

- a. Adjust the internal clock of router.

4-3 Glossary

Default Gateway (Router): Every non-router IP device needs to configure a default gateway's IP address. When the device sends out an IP packet, if the destination is not on the same network, the device has to send the packet to its default gateway, which will then send it out towards the destination.

DHCP: Dynamic Host Configuration Protocol. This protocol automatically gives every computer on your home network an IP address.

DNS Server IP Address: DNS stands for Domain Name System, which allows Internet servers to have a domain name (such as www.Broadbandrouter.com) and one or more IP addresses (such as 192.34.45.8). A DNS server keeps a database of Internet servers and their respective domain names and IP addresses, so that when a domain name is requested (as in typing "Broadbandrouter.com" into your Internet browser), the user is sent to the proper IP address. The DNS server IP address used by the computers on your home network is the location of the DNS server your ISP has assigned to you.

DSL Modem: DSL stands for Digital Subscriber Line. A DSL modem uses your existing phone lines to transmit data at high speeds.

Ethernet: A standard for computer networks. Ethernet networks are connected by special cables and hubs, and move data around at up to 10/100 million bits per second (Mbps).

Idle Timeout: Idle Timeout is designed so that after there is no traffic to the Internet for a pre-configured amount of time, the connection will automatically be disconnected.

IP Address and Network (Subnet) Mask: IP stands for Internet Protocol. An IP address consists of a series of four numbers separated by periods, that identifies a single, unique Internet computer host in an IP network. Example: 192.168.1.1. It consists of 2 portions: the IP network address, and the host identifier.

The IP address is a 32-bit binary pattern, which can be represented as four cascaded decimal numbers separated by ".": `aaa.aaa.aaa.aaa`, where each "aaa" can be anything from 000 to 255, or as four cascaded binary numbers separated by ".": `bbbbbbbb.bbbbbbbb.bbbbbbbb.bbbbbbbb`, where each "b" can either be 0 or 1.

A network mask is also a 32-bit binary pattern, and consists of consecutive leading 1's followed by consecutive trailing 0's, such as

`11111111.11111111.11111111.00000000`. Therefore sometimes a network mask can also be described simply as "x" number of leading 1's.

When both are represented side by side in their binary forms, all bits in the IP address that correspond to 1's in the network mask become part of the IP network address, and the remaining bits correspond to the host ID.

For example, if the IP address for a device is, in its binary form,

`11011001.10110000.10010000.00000111`, and if its network mask is,

`11111111.11111111.11110000.00000000`

It means the device's network address is

`11011001.10110000.10010000.00000000`, and its host ID is,

`00000000.00000000.00000000.00000111`. This is a convenient and efficient method for routers to route IP packets to their destination.

ISP Gateway Address: (see ISP for definition). The ISP Gateway Address is an IP address for the Internet router located at the ISP's office.

ISP: Internet Service Provider. An ISP is a business that provides connectivity to the Internet for individuals and other businesses or organizations.

LAN: Local Area Network. A LAN is a group of computers and devices connected together in a relatively small area (such as a house or an office). Your home network is considered a LAN.

MAC Address: MAC stands for Media Access Control. A MAC address is the hardware address of a device connected to a network. The MAC address is a unique identifier for a device with an Ethernet interface. It is comprised of two parts: 3 bytes of data that corresponds to the Manufacturer ID (unique for each manufacturer), plus 3 bytes that are often used as the product's serial number.

NAT: Network Address Translation. This process allows all of the computers on your home network to use one IP address. Using the broadband router's NAT capability, you can access the Internet from any computer on your home network without having to purchase more IP addresses from your ISP.

Port: Network Clients (LAN PC) uses port numbers to distinguish one network application/protocol over another. Below is a list of common applications and protocol/port numbers:

Application	Protocol	Port Number
Telnet	TCP	23
FTP	TCP	21
SMTP	TCP	25
POP3	TCP	110
H.323	TCP	1720
SNMP	UCP	161
SNMP Trap	UDP	162
HTTP	TCP	80
PPTP	TCP	1723
PC Anywhere	TCP	5631
PC Anywhere	UDP	5632

PPPoE: Point-to-Point Protocol over Ethernet. Point-to-Point Protocol is a secure data transmission method originally created for dial-up connections; PPPoE is for Ethernet connections. PPPoE relies on two widely accepted standards, Ethernet and the Point-to-Point Protocol. It is a communications protocol for transmitting information over Ethernet between different manufacturers

Protocol: A protocol is a set of rules for interaction agreed upon between multiple parties so that when they interface with each other based on such a protocol, the interpretation of their behavior is well defined and can be made objectively, without confusion or misunderstanding.

Router: A router is an intelligent network device that forwards packets between different networks based on network layer address information such as IP addresses.

Subnet Mask: A subnet mask, which may be a part of the TCP/IP information provided by your ISP, is a set of four numbers (e.g. 255.255.255.0) configured like an IP address. It is used to create IP address numbers used only within a particular network (as opposed to valid IP address numbers recognized by the Internet, which must be assigned by InterNIC).

TCP/IP, UDP: Transmission Control Protocol/Internet Protocol (TCP/IP) and Unreliable Datagram Protocol (UDP). TCP/IP is the standard protocol for data transmission over the Internet. Both TCP and UDP are transport layer protocol. TCP performs proper error detection and error recovery, and thus is reliable. UDP on the other hand is not reliable. They both run on top of the IP (Internet Protocol), a network layer protocol.

WAN: Wide Area Network. A network that connects computers located in geographically separate areas (e.g. different buildings, cities, countries). The Internet is a wide area network.

Web-based management Graphical User Interface (GUI): Many devices support a graphical user interface that is based on the web browser. This means the user can use the familiar Netscape or Microsoft Internet Explorer to Control/configure or monitor the device being managed.

4-4 Legal & Regulatory Information

This manual is copyright. Apart from any fair dealing for the purposes of private study, research, criticism or review, as permitted under the Copyright Act, no part may be reproduced, stored in a retrieval system or transmitted in any form, by any means, be it electronic, mechanical, recording or otherwise, without the prior written permission of NetComm Limited. NetComm Limited accepts no liability or responsibility, for consequences arising from the use of this product.

NetComm Limited reserves the right to change the specifications and operating details of this product without notice.

NetComm is a registered trademark of NetComm Limited.

All other trademarks are acknowledged the property of their respective owners.

Customer Information

ACA (Australian Communications Authority) requires you to be aware of the following information and warnings:

This unit shall be connected to the Telecommunication Network through a line cord which meets the requirements of the ACA TS008 Standard.

This equipment has been tested and found to comply with the Standards for C-Tick and or A-Tick as set by the ACA . These standards are designed to provide reasonable protection against harmful interference in a residential installation. This equipment generates, uses, and can radiate radio noise and, if not installed and used in accordance with the instructions detailed within this manual, may cause interference to radio communications. However, there is no guarantee that interference will not occur with the installation of this product in your home or office. If this equipment does cause some degree of interference to radio or television reception, which can be determined by turning the equipment off and on, we encourage the user to try to correct the interference by one or more of the following measures:

- *Change the direction or relocate the receiving antenna.*
- *Increase the separation between this equipment and the receiver.*
- *Connect the equipment to an alternate power outlet on a different power circuit from that to which the receiver/TV is connected.*
- *Consult an experienced radio/TV technician for help.*

The power supply that is provided with this unit is only intended for use with this product. Do not use this power supply with any other product or do not use any other power supply that is not approved for use with this product by NetComm. Failure to do so may cause damage to this product, fire or result in personal injury.

Product Warranty

The warranty is granted on the following conditions:

1. This warranty extends to the original purchaser (you) and is not transferable;
2. This warranty shall not apply to software programs, batteries, power supplies, cables or other accessories supplied in or with the product;
3. The customer complies with all of the terms of any relevant agreement with NetComm and any other reasonable requirements of NetComm including producing such evidence of purchase as NetComm may require;
4. The cost of transporting product to and from NetComm's nominated premises is your responsibility; and,
5. NetComm does not have any liability or responsibility under this warranty where any cost, loss, injury or damage of any kind, whether direct, indirect, consequential, incidental or otherwise arises out of events beyond NetComm's reasonable control. This includes but is not limited to: acts of God, war, riot, embargoes, acts of civil or military authorities, fire, floods, electricity outages, lightning, power surges, or shortages of materials or labour.
6. The customer is responsible for the security of their computer and network at all times. Security features may be disabled within the factory default settings. NetComm recommends that you enable these features to enhance your security.

The warranty is automatically voided if:

1. You, or someone else, use the product, or attempts to use it, other than as specified by NetComm;
2. The fault or defect in your product is the result of a voltage surge subjected to the product either by the way of power supply or communication line, whether caused by thunderstorm activity or any other cause(s);
3. The fault is the result of accidental damage or damage in transit, including but not limited to liquid spillage;
4. Your product has been used for any purposes other than that for which it is sold, or in any way other than in strict accordance with the user manual supplied;
5. Your product has been repaired or modified or attempted to be repaired or modified, other than by a qualified person at a service centre authorised by NetComm; and,
6. The serial number has been defaced or altered in any way or if the serial number plate has been removed.

Limitations of Warranty

The Trade Practices Act 1974 and corresponding State and Territory Fair Trading Acts or legalisation of another Government ("the relevant acts") in certain circumstances imply mandatory conditions and warranties which cannot be excluded. This warranty is in addition to and not in replacement for such conditions and warranties.

To the extent permitted by the Relevant Acts, in relation to your product and any other materials provided with the product ("the Goods") the liability of NetComm under the Relevant Acts is limited at the option of NetComm to:

- *Replacement of the Goods; or*
- *Repair of the Goods; or*
- *Payment of the cost of replacing the Goods; or*
- *Payment of the cost of having the Goods repaired.*

All NetComm ACN 002 490 486 products have a standard 12 months warranty from date of purchase. However some products have an extended warranty option (refer to packaging). To be eligible for the extended warranty you must supply the requested warranty information to NetComm within 30 days of the original purchase by registering on-line via the NetComm web site at

www.netcomm.com.au

Contact Information

If you have any technical difficulties with your product, please do not hesitate to contact NetComm's Customer Support Department.

Email: support@netcomm.com.au

www.netcomm.com.au

Note: NetComm Technical Support for this product only covers the basic installation and features outlined in the Quick Start Guide. For further information regarding the advanced features of this product, please refer to the configuring sections in this User Guide or contact a Network Specialist.

NetComm[®]
www.netcomm.com.au

NetComm Limited ABN 85 002 490 486
PO Box 1200, Lane Cove NSW 2066 Australia
E – sales@netcomm.com.au **W** – www.netcomm.com.au