



User Guide

Contents

Chapter1 Introduction.....	5
1.1 About this Manual	5
1.2 Customer Support.....	5
Chapter2 Product Overview	7
2.1 Package Contents	7
2.2 Physical Description	7
2.3 Features and Benefits	8
Chapter3 Basic Installation.....	10
3.1 Connecting the Hardware	10
3.2 Wireless Connection.....	10
3.3 Setting the IP Address of the NP3680W.....	11
Chapter4 Installing the Print Server in Windows	15
4.1 Setting up Local Windows Print Server.....	15
4.2 Connecting the NP3680W	16
4.3 Adding Network Printers in Windows	18
Chapter5 Connecting a File Server	27
5.1 Preliminary	27
5.2 Storage Names	27
5.3 Connecting USB Mass Storage to the Server.....	28
5.4 Adding Your USB Mass Storages to Network with Security	28
Chapter6 Connecting a Scanner.....	35
6.1 Connecting HP All-In-One to the Server	35
6.2 Using the Shared Scanner in Windows.....	36
Chapter7 The Control Center	39
7.1 Installing Control Center	39
7.2 Using the Control Center.....	39
7.3 Quitting the Control Center.....	44
Chapter8 The NetUSB Technology	46
8.1 Introduction	46
8.2 Connect & Disconnect	47
8.3 How to Use	48
8.4 Limitations	52

Chapter9 The Server's Web Pages	54
9.1 Introduction	54
9.2 Using the Server's Web Pages.....	54
Chapter10 Email Alerting.....	61
Chapter11 Troubleshooting.....	63
11.1 LED Indicators.....	63
Chapter12 Restore Factory Defaults.....	66
12.1 Using the Control Center.....	66
12.2 Using the Server's Web Pages.....	66
12.3 Using Init Button.....	67
12.4 Default Parameters List	67
Chapter13 Upgrade Firmware	70
Chapter14 The Init Button.....	73
APPENDIX A Cable Information	75
RJ-45 Network Ports	75
Straight and crossover cable configuration	76
Straight-Through Cabling	76
Cross-Over Cabling.....	76
APPENDIX B Registration and Warranty Information	77
Contact Information	77
Copyright Information.....	77
Customer Information	77
Product Warranty.....	78
Limitations of Warranty	79

Introduction



1. Introduction

Thank you for purchasing this **NP3680W** USB MFP Server. The **NP3680W** is designed to connect your AIO/MFPs (All-In-One/Multifunction Peripheral), printers, USB mass storages (hard drives, flash drives, and memory card readers), and scanners, to your network, allowing all network users access to these shared USB devices resources.

1.1 About this Manual

This manual provides introductory information as well as detailed instructions on how to set up and manage the **NP3680W** in various network environments.

To fully benefit from this document, you should be familiar with basic networking principles. The instructions described in this manual are based on the settings for an out-of-the-box **NP3680W**. To reload the Factory Default settings, you can reset the NP3680W back to Factory Defaults, which will restore most of the settings. For details, please refer to the chapter “Restore Factory Defaults”.

1.2 Customer Support

Should you require any technical assistance, please contact your product reseller. Or you can visit our website at <http://www.netcomm.com.au> for latest product information. This document is subject to changes without prior notice.

Product Overview



2.Product Overview

2.1 Package Contents

Verify that nothing is missing from the package by using the check list below. Please contact your dealer if anything is missing or damaged. All packing materials are recyclable. Please confirm the items in the package below:

- NP3680W
- One Quick Start Guide
- One CD (Utility and UG)
- Power Adapter 12VDC 1A

2.2 Physical Description



Ports	
Power Adaptor Port:	DC IN 12VDC/1A adaptor
Init Button:	Reset to factory defaults and for TFTP Firmware upgrades
Ethernet Port:	A twisted pair category 5 cable
Wireless Station:	IEEE 802.11 b/g wireless station with an external antenna
USB Host Ports:	USB 1.1/2.0 low, full, and Hi-Speed compliant

Front Panel Indicators	
Power Indicator:	is lit while power is applied. If it is not lit, or if it blinks, there is a problem with the NP3680W or power adapter.
LAN Indicator:	Blinks to indicate wired network activity. If it is lit, it indicates the wired network is active. If it is not lit, it indicates that the NP3680W is not connected to the wired network.
WLAN Indicator:	Blinks to indicate wireless network activity. If it is lit, it indicates the wireless network is active. If it is not lit, it indicates that the NP3680W is not connected to the wireless network.
USB1 Indicator:	is lit while a USB device connects to USB1 Port of this NP3680W. If it is not lit, or if it blinks, there is a problem with the USB device or this NP3680W.
USB2 Indicator:	is lit while a USB device connects to USB2 Port of this NP3680W. If it is not lit, or if it blinks, there is a problem with the USB device or this NP3680W.

2.3 Features and Benefits

This NP3680W provides the following features and benefits:

Reliability:	The NP3680W provides high performance and reliability combined with low power consumption.
Flexibility:	The NP3680W supports Print/File/Scan sharing in all major computer systems and environments.
Easy to Install:	The NP3680W installs, operates, and is managed in a reliable and easy fashion.
Security:	You can assign administrator name and password to restrict login.
Monitoring:	The NP3680W web pages and user software allow you to continuously monitor the status of connected USB devices.
Future Proof:	The firmware stored in the NP3680W Flash memory can be upgraded over the network. This allows you to quickly update and enhance its operational features when new NP3680W software becomes available.




Basic Installation

3. Basic Installation

3.1 Connecting the Hardware


1. Make sure that your USB devices are switched off and that the NP3680W Power Adapter is disconnected.
2. Connect the USB devices to the USB ports with the USB cables.
3. Connect the NP3680W to the network with a twisted-pair category 5 cable, 10baseT or 100baseTX.
4. Turn on the USB devices and make sure they are ready for use.
5. Connect the Power Adapter to the NP3680W. The power indicator will light up and USB1 and USB2 indicators will flash in turn. When the LAN indicator lights up, the NP3680W is correctly connected to the network. When the USB1 and USB2 indicators stop flashing, the NP3680W is ready to work.

3.2 Wireless connection

1. Install MFP Server Control Center. from the product CD
2. Start MFP Server Center and Auto-searching MFP server window will appear.
 if the wireless parameters are not correct or not set yet, you have to use LAN to access MFP Server Control Center
3. Double click your **NP3680W** server (or click the "Configure MFP Server" button) and type the server's username (default: admin) and password (default: admin)
4. From the server menu, select wireless. The Wireless dialog appears.
5. In order to join an existing wireless network, you have to set the correct network type (infrastructure or ad-hoc), SSID, and the correct security method with the correct key information.
6. After modifying the wireless settings, select 'Apply', then 'Yes' to save the settings and restart the **NP3680W**
7. Remove the Ethernet Cable to allow the **NP3680W** to wirelessly connect to your network

3.3 Setting the IP Address of the NP3680W

3.3.1 Setting the IP Address Using the MFP Control Center

1. Install MFP Server Control Center. MFP Server Control Center is available in the NP3680W USB MFP Server Product CD.
2. Start MFP Server Control Center and Auto-searching MFP Server window will appear.
 *the wireless parameters are not correct or not set yet, you have to use LAN to access MFP Server Control Center*
3. Double click your NP3680W in the list and enter the username (default: **admin**) and password (default: **admin**).
4. After you have logged in successfully, select the TCP/IP tab. The Set IP Address dialog appears.
5. Click the button corresponding to your choice of IP setting method (static or dynamic using DHCP). When assigning a static IP address you also have to define Subnet Mask and Default Gateway. If you choose Automatically get IP by DHCP, you can use desired DNS by clicking the Manual DNS button and manually assigning a DNS.
6. Click **Apply** to save your settings and the NP3680W will reboot.
7. You have now finished the procedure of setting the IP address.

3.3.2 Setting the IP Address Using the NP3680's Web Interface

1. If you don't know the current IP of your Server, follow Step1~Step2 of 'Setting the IP Address Using the MFP Control Center'.
2. You can see the IP address of your **NP3680W** in the Server List. Open a Web Browser and enter the **NP3680W**'s IP address or click the **GoTo Homepage** Icon of the Control Center.
3. Go to the web page and click the **CONFIG** menu icon.
4. Enter username (default: **admin**) and password (default: **admin**).



5. Click the TCP/IP menu icon.



6. Click the button corresponding to your choice of IP setting methods (static or dynamic using DHCP). When assigning a static IP address you also have to define Subnet Mask and Default Gateway.
7. Click **Submit** to save your settings. And the **NP3680W** will reboot. You have now finished the procedure of setting the IP address.



4. Installing the Print Server in Windows

4.1 Setting up Local Windows Printer Driver

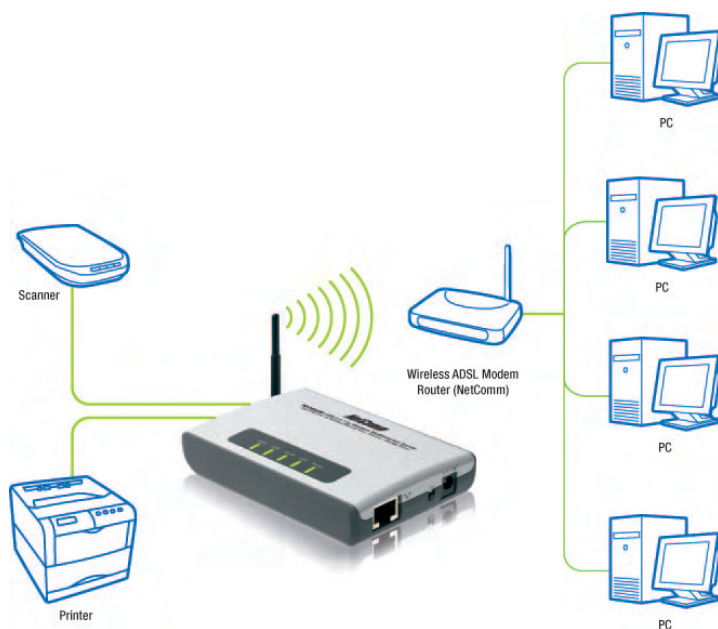
You are advised to install your Windows printer driver in advance. For most printers, you can install the printer drivers with the following procedure:

1. Click **Start**, click **Control Panel**, click **Printers and Other Hardware**, and then click **Printers and Faxes**.
2. Double click **Add Printer** to start the **Add Printer Wizard**, and then click **Next**.
3. Click **Local printer**, clear the **Automatically detect and install my Plug-n-Play printer** check box to avoid having to wait for the completion of another printer search, and then click **Next**. If you leave this option selected, Windows will attempt to find the printer itself and figure out what kind it is. If Windows does not find the printer, the wizard will continue as described in this task.
4. Select a Windows driver for your printer. Click **Next**.
5. Choose whether you want to share the printer with other network users. Select the appropriate radio button and click **Next** and **Finish**.

4.2 Connecting the NP3680W to your Network

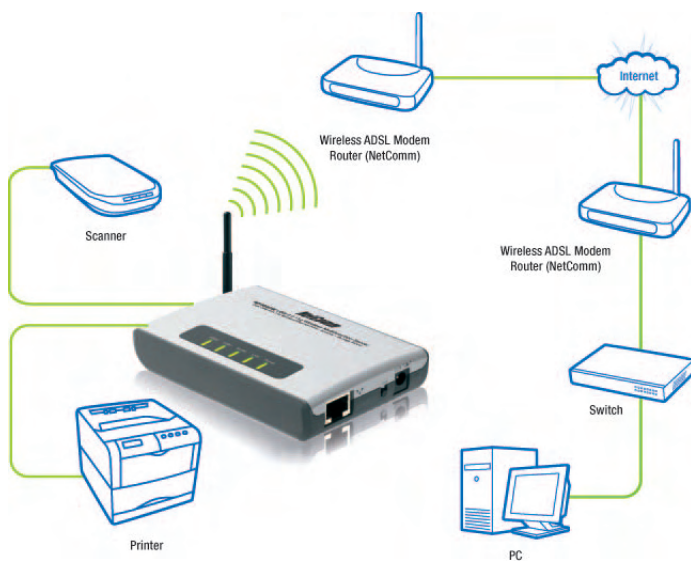
To configure your **NP3680W** correctly, you should know which type of network topology that your NP3680W is connecting to.

4.2.1 The NP3680W and Windows PC on Same LAN



4.2.2 The NP3680W and Windows PC on Different LANs

Example: Wired Windows PC across Internet



4.3 Adding Network Printers in Windows

Follow the instructions below to use the standard Windows Add Printer Wizard and the Control Center for adding a network printer in Windows 2000, XP, 2003 and Vista.



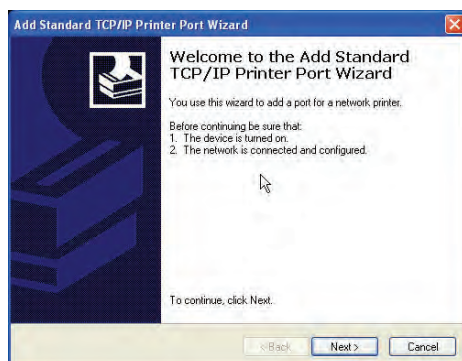
Before adding a network printer, you are advised to install the local Windows printer driver in advance.



Before using network printer, you have to turn on "Use Printer Online" in installed network printer driver and then you can use the printer.

4.3.1 Using Standard Windows Methods for LPR Printing Protocol

1. Open Printers and Faxes (Printers for Vista).
2. Right-click the printer for which you want to change settings, and then click **Properties/ports**.
3. Clear **Enable bidirectional support** and click **Add port**, and then click **Standard TCP/IP Port** from the dropdown and click **New port**.
4. The **Add Standard TCP/IP Printer Port Wizard** will pop up and click **Next**.



5. In the Printer Name or IP Address box, enter the Host Name of the **NP3680W** (default: NP3680W) or IP address of the **NP3680W**. (default: 192.168.1.100). In the Port Name box, enter your desired names or USB1_LPR or USB2_LPR for printer connected to USB1 port and USB2 port, respectively. Click **Next**.



If your NP3680W is running on a different LAN than your Windows PC such as Internet PC, you must enter Server's IP address in Printer Name or IP Address box.

6. Click **Custom/settings**.
7. Click **Settings** and confirm that the settings are as below. The queue names are USB1_LQ, USB2_LQ for USB1 and USB2, respectively. Click **OK**. Then Click **Finish**.

4.4.2 Using the Control Center for LPR Printing

1. Start the Control Center, select your **NP3680W** right click on it and click Set Printer.



2. Select USB1 Port or USB2 Port to add the printer in Set printer in box, choose to use Host Name or IP address to represent the **NP3680W** in Select IP address or Host Name in printer port box, and select the network printing protocol of Printing with LPR (Line Printer Remote).



If your NP3680W is running on a different LAN than your Windows PC such as Internet PC, you must choose IP address in Select IP address or Host Name in printer port box.

3. Click **Apply**.
4. Select the desired printer driver and click **Set Port to Printer**.



5. If you cannot find any printer driver in Printer List, please install your printer driver first or click **Add New Printer** to install the printer driver.

4.3.3 Using Standard Windows Method for Raw TCP Printing

1. Open **Printers and Faxes**. (Printers in Vista)
2. Right-click the printer for which you want to change settings, and then click **Properties**.
3. Clear **Enable bidirectional support** and click **Add port**, and then click **Standard TCP/IP Port** from the dropdown and click **New port**.
4. The "Add Standard TCP/IP Printer Port Wizard" will pop up and click **Next**.
5. In the **Printer Name or IP Address** box, enter the Host Name of the Server (default: NP3680W) or IP address of the **NP3680W** (default: 192.168.1.100)
6. In the **Port Name** box, enter **USB1_RAW** or **USB2_RAW** for printer connected to USB1 port and USB2 port, respectively.



If your NP3680W is running on a different LAN than your Windows PC such Internet PC, you must enter the Server's IP address in **Printer Name or IP Address** box.

7. Click **Next**.
8. Click **Custom/settings**.
9. The click **Settings** and confirm that the settings are as below. The default Port Number values are 9100, 9101 for USB port 1 and USB port 2, respectively. Refer to the NP3680W web interface or the Control Center, you can get exact values. Click **OK**.
10. Click **Finish**.

4.3.4 Using the Control Center for Raw TCP/JetDirect Printing

1. Start the Control Center, select your **NP3680W** and click **Set Printer**.

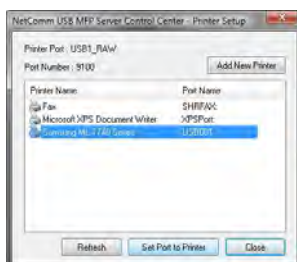


2. Select USB1 Port or USB2 Port to add the printer in Set printer in box, choose to use or IP address to represent the **NP3680W** in Select IP Address or Host Name in printer port box, and select the network printing protocol of Print with Raw TCP Mode.



If your NP3680W is running on a different LAN than your Windows PC such as Internet PC, you must choose IP address in Select IP Address or Host Name in printer port box.

3. Click **Apply**.



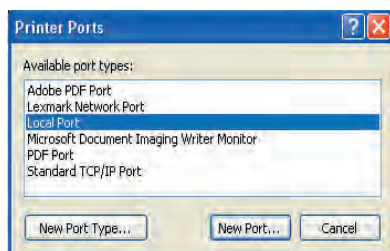
4. Select the desired printer driver and click **Set Port to Printer**.
5. If you cannot find any printer driver in Printer List, please install your printer driver first or click **Add New Printer** to install the printer driver.

4.3.5 Using Standard Windows Methods for SMB/CIFS Printing



Before using SMB/CIFS printing, you have to login the SMB/CIF Print/File server in advance and then you may use it; otherwise you have to disable SMB/CIFS Print/File Server Authentication.

1. Open **Printers and Faxes**. (**Printers in Vista**)
2. Right-click the printer for which you want to change settings, and then click **Properties**.
3. Click the **Ports** tab.
4. Clear **Enable bidirectional support** and click **add port**, and click **Local Port**, and then click **New Port...** in the Printer Ports box.



5. In the Port Name box, enter the path to the printer with the following format: "\\ **NP3680W**'s Host Name\printer name" or "\\ **NP3680W**'s IP address\printer name" (Please refer to the **NP3680W**'s web interface or the Control Center to know exact path). For example: if you set the **NP3680W**'s Host Name as "**NP3680W**" and printer name (USB1 port) as LaserJet 303, then the network path is expressed as: \\ **NP3680W**\LaserJet303.



If your NP3680W is running on a different LAN than your windows PC such as Internet PC, you must enter IP address in Port Name box.

6. Click **OK**, and then select a Windows driver for your printer. If you already have the printer's driver installed, you will be asked whether to keep it or to replace it. Click **Next**.
7. Choose whether you want to share the printer with other network users. Do you want to print a test page? Select the appropriate radio button and click **Next** and **Finish**.

4.3.6 Using the Control Center for SMB/CIFS Printing



Before using SMB/CIFS printing, you have to login the SMB/CIF Print/File server in advance and then you may use it; otherwise you have to disable SMB/CIFS Print/File Server authentication.

Windows Platform: Windows 2000, XP, 2003 and Vista

1. Start the Control Center, select your **NP3680W** and click **Set Printer**.

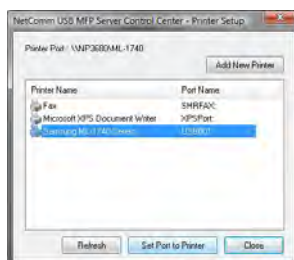


2. Select USB1 Port or USB2 Port to add the printer in Set printer in box, choose to use Host Name or IP address to represent the **NP3680W** in Select IP Address or Host Name in printer port box, and select the network printing protocol of Printing with Network Path (SMB).



If your NP3680W is running on a different LAN than your Windows PC such as Internet PC, you must choose IP address in Select IP address or Host Name in printer port box.

3. Click **Apply**.



4. Select the desired printer driver and click **Set Port to Printer**.
5. If you cannot find any printer driver in **Printer List**, please install your printer driver first or click **Add New Printer** to install the printer driver.

4.3.7 Using Standard Windows Method for IPP Printing Windows Platform:

1. Click **Start**, click **Control Panel**, click **Printers and Other Hardware**, and then click **Printers and Faxes**.
2. Double click **Add Printer** to start the **Add Printer Wizard**, and then click **Next**.
3. In this window, select a network printer, or a printer attached to another computer and click **Next**.



4. Click the **Next** button. On the next window, select Connect to a printer on the Internet or on a home or office network. In the URL: field, enter the following to connect to the **NP3680W**: `http://NP3680W's Host Name /printer name` or `http://NP3680W's IP address /printer name`
For example, `http://NP3680W/LaserJet 303`
5. Click **Next** and then continue **Windows Add Printer Wizard**.



If your NP3680W is running on a different LAN than your windows PC such as Internet PC, you must enter IP address in URL: Field.

File Server



5. Connecting a File Server

This chapter describes the file server function of the NP3680W which allows USB storage devices to be shared across a network by using SMB: NetBIOS over TCP/IP and FTP protocol.

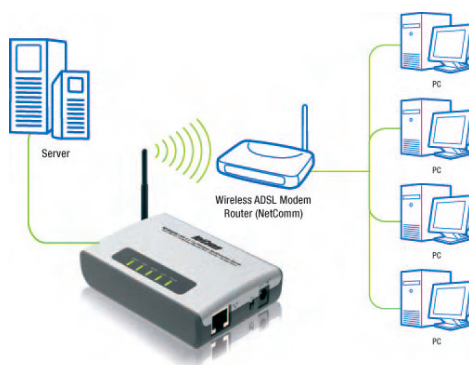
5.1 Preliminary

1. This product supports a file format of FAT12/16/32 and NTFS. However, NTFS is only supported in NetUSB mode. Please refer to the Storage Access Mode.
2. NetComm is not responsible for the loss or corruption of data in memory devices, including hard disk; NetComm is not responsible for the leak, manipulation, loss, or corruption of data in memory devices connected to the NP3680W after unauthorized access.
3. In order to use the USB Mass Storage device connected to the NP3680W, the SMB protocol or FTP protocol must be set up.
4. This product does not support to magnet optical drive devices such as CD/DVD.
5. This product allows shared two USB storage devices over the network in Windows through the USB ports.
6. This product does not support the USB devices through USB hub.

5.2 Storage Names

The local drives of the two storages in USB1 port and USB2 port are named as USBx_DxPx, where USBx represents the USBx port, Dx represents the x-th Disk and Px represents the x-th partition.

5.3 Connecting USB Mass Storage to the NP3680W



5.4 Adding Your USB Mass Storages to Network with Security

You can use the following protocols to share your USB Mass Storages with user level security in network:

- SMB/CIFS: NetBIOS over TCP/IP
- FTP

The protocols are shown in Supported Protocols box of the Control Center or the Server's web pages.

5.4.1 Setting up File Server Using the Control Center

1. Start the **Control Center** and Auto-searching Server window will appear.
2. If the tool finds multiple **NP3680W**'s in your local area network, then you have to select one **NP3680W** from the Server List.
3. Double click the **NP3680W** listed and enter the **NP3680W**'s username (default: **admin**) and password (default: **admin**).

4. After you have logged in successfully, click **Supported Protocols**.



5. Set up File Server Configuration:

A. Set SMB/CIFS Print/File Server

- **Enable SMB/CIFS Print/File Server:** select the item, if you want to support SMB/CIFS print/File server.
- **Enable Internet Access:** clear the item, if you do not allow that users can access your SMB/CIFS server via Internet. If you select the item, you allow Internet users can access your storage using the SMB/CIFS protocol.
- **Enable Server Authentication:** select the item, if you want to share your storage with user level security which requires user name and password to login. If you clear the item, your storage will be shared without security.

B. Set FTP Server:

- **Enable FTP Server:** select the item, if you want to support FTP server.
- **FTP port:** enter the desired FTP port. The default value is 21.
- **Maximum Session Number:** select the item and fill in desired number.
- **Enable Passive Mode:** select the item, if you want to allow that your FTP server can accept passive mode command.
- **Enable Server Authentication:** select the item, if you want to share your storage with user level security which requires user name and password to login. If you clear the item, your storage will be shared without security.

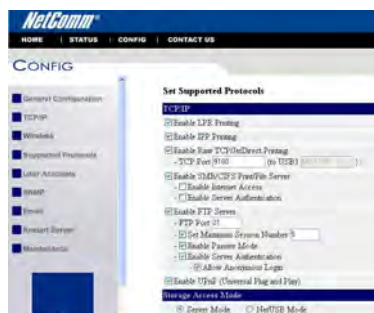
- Allow Anonymous Login: select the item, if you want to allow the user “anonymous” to login your FTP server with read-only permission and the Server will not check the password. If you clear the item, your FTP server will not support anonymous login function.

C. Storage Access Mode:

To use FTP and SMB/CIFS to access storage, please set the storage access mode to the server mode. For the NetUSB mode, please refer to chapter 8.

5.4.2 Setting up File Server Using Web Interface

1. Go to the web page, click CONFIG.
2. Login using your username (default: admin) and password (default: admin).
3. After you have logged in successfully, click Supported Protocols.



4. Set up File Server Configuration:
 - A. Set SMB/CIFS Print/File Server
 - Enable SMB/CIFS Print/File Server: select the item, if you want to support SMB/CIFS print/File server.
 - Enable Internet Access: clear the item, if you do not allow that users can access your SMB/CIFS server via Internet. If you select the item, you allow Internet users can access your storage using the SMB/CIFS protocol.

- **Enable Server Authentication:** select the item, if you want to share your storage or printer with user level security which requires user name and password to login. If you clear the item, your storage will be shared without security.
- B. Set FTP Server:**
 - **Enable FTP Server:** select the item, if you want to support FTP server.
 - **FTP port:** enter the desired FTP port. The default value is 21.
 - **Maximum Session Number:** select the item and fill in desired number.
 - **Enable Passive Mode:** select the item, if you want to allow that your FTP server can accept passive mode command.
 - **Enable Server Authentication:** select the item, if you want to share your storage with user level security which requires user name and password to login. If you clear the item, your storage will be shared without security.
 - **Allow Anonymous Login:** select the item, if you want to allow the user “anonymous” to login your FTP server with read-only permission and the Server will not check the password. If you clear the item, your FTP server will not support anonymous login function.
- C. Storage Access Mode:**

To use FTP and SMB/CIFS to access storage, please set the storage access mode to the server mode. For the NetUSB mode, please refer to chapter 8.

5.4.3 Using Shared Storages by SMB/CIFS Method for Windows

5.4.3.1 Windows 2000/XP/2003

1. Connect a USB storage device to this product.
2. Select **My Network Places**.
3. Click **Display the Computers of Workgroup**.
4. Double click **Microsoft Windows Network** icon.
5. Double click the Workgroup that the Server belongs to. The default Workgroup name is “**WORKGROUP**”. You can refer to Control Center or the Server’s web pages to get it. You will see that the Server will be displayed as the default Host Name “**NP3680W**” or the Host Name that you have set.

6. If you cannot find Workgroup name of the **NP3680W** in Microsoft Windows Network, you can select Search for Computer... in My Network Places and enter the Host Name of the Server (For example, default Host Name "**NP3680W**" or the Server's IP address) to find it.
7. Double click this Host Name icon.
8. If you clear Enable SMB/CIFS Print/File Server Authentication in Supported Protocols, you login to the SMB server without requiring authentication; otherwise you have to enter user name and password to login to the **NP3680W**. You can add user name and password in User Account box by the Control Center or the **NP3680W**'s Web page.
9. The shared folders will be listed as USB1_DyPz, and USB2_DyPz where Dy represents the y-th disk and Pz represents the z-th partition with respect to USB1 port and USB2 port.
10. Perform Open, Paste, Remove or Copy the files to the shared folders.

5.4.3.2 Windows Vista

1. Connect a USB storage device to this network.
2. Click on the Start button and select Network.
3. Double click on the Host Name icon. (Default is **NP3680W**).
4. The shared folders will be listed as USB1_DyPz, and USB2_DyPz where Dy represents the y-th disk and Pz represents the z-th partition with respect to USB1 port and USB2 port.



Another way to used shared storages by SMB/CIFS method: In Control Center, click the 'Network Storage' button.

5.5.4 Using Shared Storage by FTP Methods for Windows

A. Use Microsoft IE to access the shared USB Mass Storages

1. Open Microsoft IE
2. In Web Address List, enter command: "ftp://**NP3680W**'s Host Name" or "ftp://**NP3680W**'s IP address". If you have changed the default FTP port : 21 to the new value, you have to add the new port number in the tail of the command as "ftp://**NP3680W**'s Host Name: ftp port" or "ftp://**NP3680W**'s IP address: ftp port".

3. If you set Enable Server Authentication in FTP server protocol settings you have to enter user name and password to login to the **NP3680W**; if you set Allow Anonymous Login, you can use the user name "anonymous" to login with Read-only permission. If you clear Server authentication, you do not need username or password to login to the Server. You can add user name and password in User Account box by the Control Center or the Server's Web pages.
4. The shared folders will be listed in IE.
5. Perform Paste, Remove or Copy the files to the shared folders.

B. Use Microsoft Dos's FTP client

1. Click 'Start> Run, 'type 'cmd', and press enter
2. Enter Dos command as "ftp", and press enter
3. Enter "open server's Host Name" or "open server's IP address" For example 'open 192.168.1.100'. If you have changed the default FTP port : 21 to the new value, you have to add the new port number in the tail of command as "open server's Host Name ftp port" or "open server's IP address ftp port". For example open '192.168.1.100 21'
4. If you set Enable Server Authentication in FTP server protocol settings you have to enter user name and password to login to the Server; if you set Allow Anonymous Login, you can use the user name "anonymous" to login with Read-only permission. If you clear Server authentication, you do not need username or password to login to the Server. You can add user name and password in User Account box the Control Center or the Server's Web pages.
5. Perform FTP commands to use this FTP server.

Scanner



6. Connecting a Scanner

This chapter explains how to use the scan server function of this product. The scan server function enables a USB scanner, connected to this product, to be shared as a network scanner. The scan server function is available in any platform that can use SANE client. For non HP MFPs/Scanners, please use "NetUSB" technology, which is described in Chapter 8.

6.1 Connecting Scanner to the Server



6.2 Using the Shared Scanner in Windows

6.2.1 Using the Control Center

1. Start the Control Center, select your Server, and click **Network Scanner**.

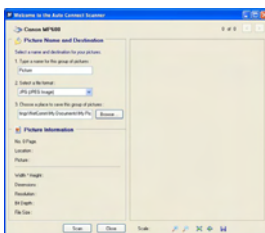


2. Select your scanner for USB1 port or USB2 port.

3. Set the options.



Not all the MFP scanners support the options above. In such a case, the options will be grayed out and not accessible.



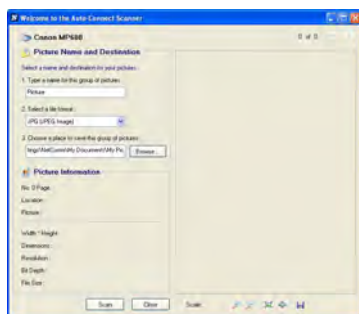
4. Click **Preview** button.
5. Adjust the window size to be scanned.
6. Click **Scan** button.
7. Save as your images to the file.

6.2.2 Using Windows Applications

Prior to using scanning functions in Windows applications such as MS Word, Photoshop ...etc, you have to install network scanner's TWAIN driver in advance. When you install the Control Center, it will also install this TWAIN driver.

Example: Using Photoshop

1. Start Photoshop, click File ->Import->NetComm Network Scanner
2. Set your options.



3. Click **Preview** button.
4. Adjust the window size to be scanned.
5. Click **Scan** button.

Control Center



7. The Control Center

This chapter describes how to use the Control Center.

7.1 Installing Control Center

1. Insert the included CD into the personal computer. The Autorun screen as in the following should appear.
2. Click **Install Software Utility** button.
3. Click **Next**, if you see any **Next** button in installation windows.
4. Click **Finish**.

7.2 Using the Control Center

7.2.1 Using the Icons of the Control Center

You can use the following icons to help you use the server:



Refresh Server List: renew to auto search the existing servers in the network.



Configure Server : configure the highlighted server.



Goto HomePage : go to the web pages of the highlighted server.



Auto-Connect printer: Set or delete Auto-Connect printer. The storage access mode must be in Server Mode.



Connect: The "connect" operation is a software operation that simulates an actual USB device plug-in.



Disconnect: The "disconnect" operation is a software operation that simulates the disconnection of the USB device



Network Scanner : perform network scanner function of the highlighted server.



Network Storage : access the network storage by SMB/CIFS method. The storage access mode must be in Server Mode.



You can also right-click the mouse button on the highlighted server to get the "Configure Server", "Goto HomePage", "Network Scanner", "Set Printer", and "Network Storage" functions.



You can also double-click on the highlighted server to get the "Configure Server" function.

7.2.2 Displaying Server Status

You can start the Control Center , Select Tools/Configuration and click on “show server information”, press apply. Status includes Host Information,TCP/IP, USB Devices Status, and Supported Protocols.

7.2.3 Setting up Server Configuration

Click the “Configure Server” button to setup the highlighted server. Then type the administrator username and password to login.

General Configuration

Set Host Information:

You have to set some information for using SMB protocol:

- **Comment:** optionally set to describe the Server
- **Host Name:** the name to represent the Server for using SMB/CIFS protocol
- **Workgroup:** the SMB/CIFS workgroup name that the Server belongs to.
- **File Server Codepage:** If users want to communicate files using FTP client tool or SMB on Windows 2000 with the Server, they have to set their Server codepage to be same as the codepage that their Windows PC is using. Generally, the criteria of choosing codepage are based on your Windows codepage. For example, if your Windows codepage is Traditional Chinese, you have to select Traditional Chinese (Big5) in the Server. Please refer to the chapter “File Server”.
- **TCP/IP:** You have to set the Server's TCP/IP configuration to connect TCP/IP network. Please see the chapter on Basic Installation for more details.
- **Supported Protocols:** The Server supports the following TCP/IP protocols:

TCP/IP

- **Enable LPR (Line Printer Remote) Printing:** select or clear Enable LPR Printing support. It is enabled in Factory Default.
- **Enable IPP Printing:** select or clear Enable IPP Printing support. It is enabled in Factory Default.
- **Enable Raw TCP Printing:** select or clear Enable Raw TCP Printing support. It is enabled in Factory Default and users may set the protocol's TCP ports as following boxes: - TCP Port 1 : set TCP port for the printer of USB1 port (default: 9100) - TCP Port 2: set TCP port for the printer of USB2 port (default: 9101)

- **Enable SMB/CIFS Print/File Server:** select or clear Enable SMB/CIFS Print/File Server support. It is enabled in Factory Default. - Enable Internet Access: select or clear Enable Internet Access support. If you clear the item, you do not allow that users can access your SMB/CIFS server via Internet. If you select the item, you allow Internet users can access your storage using the SMB/CIFS protocol. - Enable Server Authentication: select or clear Enable Server Authentication support. Select the item, if you want to share your storage or printer with user level security which requires user name and password to login. If you clear the item, your storage will be shared without security.
- **Enable FTP Server:** select or clear Enable FTP Server support. It is enabled in Factory Default and users may set some parameters as follows:
 - **FTP Port:** Enter an integer number to set FTP server's TCP port (default: 21)
 - **Set Maximum Session Number:** select or clear Set Maximum Session Number support. You can limit the FTP session number by selecting the support and enter an integer to set the allowable maximum session number. If you clear this field it means that FTP server will have no limitation in session number.
 - **Set Passive Mode:** select or clear Set Passive Mode support that FTP server can accept passive mode.
 - **Enable Server Authentication:** select or clear Enable Server Authentication support. If you select the support, you need to enter user name and password to login to the Server. If you clear the support, you do not need user name and password to enter the Server.
 - **Allow Anonymous Login:** select the item, if you want to allow the user "anonymous" to login to your FTP server with Read-Only permission and FTP server will not check the password. If you clear the item, your FTP server will not support anonymous login function.
- **Enable SANE (Scanner Access Now Easy) Server:** select or clear Enable SANE Server support. It is enabled in Factory Default and users may set the TCP port as follows:
 - **SANE Port:** set SANE server's TCP port (default: 6566)
- **Enable UPnP (Universal Plug and Play):** select or clear Enable UPnP support. It is enabled in Factory Default.

Storage Access Mode

1. **Server Mode:** In this mode, you can access the USB storage via FTP or SMB/CIFS protocols. Only FAT16/32 file format is supported in this mode. This is the default mode.
 2. **NetUSB Mode:** In this mode, you can access the USB storage using NetUSB technology. In this mode, FAT16/32 and NTFS file formats are supported, but only one user is allowed to access the storage at the same time. Please refer to chapter 8 for the details about NetUSB technology.
- **User Accounts:** You can change user name and password or add a user account for SMB/CIFS Print/File server and FTP File server. If you forgot administrator name and password, you must to perform Restore Factory Default action by plugging in the power adaptor while pressing the Init button. Please refer to the chapter "Restore Factory Defaults". Administrator owns the Read-Write Permission for File servers.

Set Administrator

- **New Administrator:** enter your desired administrator name.
- **New Password:** enter your desired password.
- **Retype Password:** confirm your previous password typing.

User Accounts list

- **User name:** add a new user account for accessing the storage attached to the Server.
- **Password:** set a password for added user.
- **Permission:** select Read-Only or Read-Write permission to access File servers.
- **Add:** click Add button, after entering the user name, corresponding password, and Permission selection. The account will take effect once shown in the blank below.
- **Delete:** delete the existing user account.
- **SNMP:** You can set community and some parameters for SNMP server. Furthermore, you can enable SNMP v3 for more security.

Set SNMP Configuration

- **Authentic Community:** set Community name of SNMP server.
- **Trap Community:** set Trap Community name for SNMP server to send trap packets.
- **Trap Address:** enter an IP address to send the Trap packet.
- **SysContact:** enter some letters for variable of SysContact that represents the name of system contact.
- **SysName:** enter some letters for variable of SysName that represents the name of system.
- **SysLocation:** enter some letters for variable of SysLocation that represents the location of system.
- **EnableAuthenTrap:** enter 1 or 2 for the variable of EnableAuthenTrap that represents to enable (1) or disable (2) to send Trap packets receiving the wrong Community name.

SNMP V3

- **Enable SNMP V3:** select or clear Enable SnmpV3 support
- **User Security name:** set user security name of SNMP v3
- **Auth Password:** set authentication password of SNMP v3.
- **Privacy Password:** set privacy password of SNMP v3.
- **Email:** If you want to receive some alerting mail from the Server, you have to enable SMTP Protocol, and set Email configuration. You can set new SMTP port number (default: 25).

Set Email Configuration

- **SMTP Protocol:** select or clear Enable SMTP support
- **SMTP Server Name:** enter your SMTP server's Host Name or IP address.
- **SMTP Port Number:** set new SMTP server's TCP port number (default: 25).
- **Subject:** enter the subject of the e-mail.
- **From Address:** enter the sender's e-mail address.
- **To Address:** enter an e-mail address to send that mail to a person.
- **Cc:** stands for carbon copy; enter an e-mail address to send that mail to a second person.
- **SMTP Server requires authentication:** login to remote SMTP server which requires authentication.
- **Account Name:** enter account name for remote SMTP server.
- **Password:** enter account's password for remote SMTP server.

Maintenance

If you want to restart the **NP3680W**, restore the **NP3680W** to factory defaults, download new firmware file from product's public website and upgrade new firmware, you can use the Maintenance tool.

- **Restart Server:** click this button, the Server will restart.
- **Factory Default:** click this button, the Server will restore factory default values.
- **Download New Firmware:** click this button to download new firmware or user software from this product's public website.
- **Upgrade Firmware:** click Open to find the firmware file to be upgraded. Click Upgrade to upload the firmware into the Server.

7.3 Quitting the Control Center

The Control Center doesn't really quit if you click the "X" box (close box) at the top right corner of the window. Instead, it just minimizes itself to the system tray. There are two ways to really close the Control Center. The first way is choosing "Exit" item in the "File" menu in the Control Center. The second way is right-clicking the icon of the Control Center in the system tray and choosing the "Exit" item.



Net USB

8. The NetUSB Technology

8.1 Introduction

The goal of NP3680W USB MFP server is to provide the print/scan/file server in a single product. For printers and scanners, there is no industrial standard. In order to support many different models of printers and scanners from various vendors, you must put so many printer/scanner drivers into a single product. Obviously this is very hard and not practical. We have developed a new technology, called “NetUSB”, to solve this problem. With the NetUSB technology, it is not necessary to implement printer/scanner drivers in NP3680W. Actually, NP3680W relies on printer/scanner drivers that are installed on PCs. By the way, in the field of traditional network print server, the common protocols used are, for example, SMB/CIFS, LPR, raw TCP, and IPP. However, in order to reduce cost, many printer vendors produce so-called GDI or host-based printers. For technical reasons, these kinds of printers can not work with the traditional network printer protocols. The NetUSB technology can also deal with the problem. The basic concept and the usage of NetUSB will be introduced in this chapter.

In summary, NP3680W has a totally different technology, “NetUSB”, to deal with printers and scanners (MFPs).

- A. For printers, some special kinds of printers, such as GDI printers or host-based printers, can not work well with traditional print server technology as described in the previous chapters. Users should use the NetUSB technology to deal with these kinds of printers.
- B. The Net USB Mode provides greater capability with all types of MFPs. Users should use the NetUSB technology to deal with non-HP MFPs, if not successful in Server Mode.
- C. For USB mass storage, such as USB hard drives and flash drives and card readers on some kinds of MFPs, users can also use the NetUSB technology to access them in single-user mode. By this way, NTFS file system is supported for read/write. To use the NetUSB technology to access storage, please set the storage access mode to NetUSB mode. Please refer to chapter 5 for how to set the storage access mode.



The default storage access mode is server mode.

8.2 Connect & Disconnect

“NetUSB” allows you to use USB printers or USB MFPs as if they were connected directly to your PC although they are actually connected to the NP3680W USB MFP server. The “connect” operation is a software operation that simulates an actual USB device plug-in. That is to say, when you do a “connect” operation in the Control Center, PC can then detect a USB device's plug-in, although actually you do not plug in any USB device. Similarly, the “disconnect” operation is a software operation that simulates the disconnection of the USB device. Once the connect operation is successful, the operations to use that USB device are just the same as if the USB device is directly connected to the PC.

If a USB device is “connected” by a PC, we say that PC has the ownership of the USB device. Only one PC can get the ownership of a USB device at the same time.

For printers, users can mix print jobs with traditional printing protocols, such as LPR or SMB or IPP, and with the NetUSB printing, as long as the printer is in “disconnect” state (that is, no PC currently has ownership of that printer.) when a print job with traditional protocols occurs. For USB storage, if the storage access mode is in NetUSB mode, users can only use NetUSB technology to access storage. On the other hand, if the storage access mode is in server mode, users can only use FTP or SMB to access storage.

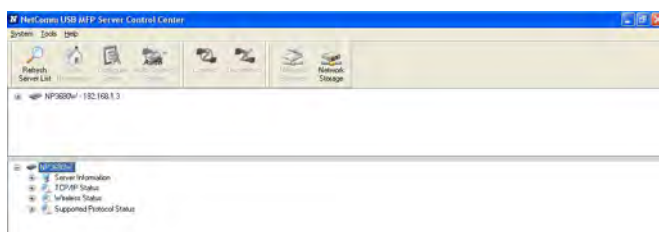
8.3 How to Use

8.3.1 Remote Installation

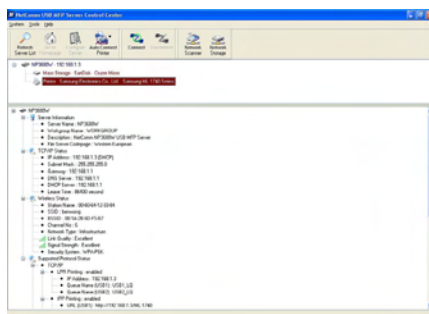
Here we will describe how to use the NetUSB technology to do “remote installation” for a USB device. Before using the NetUSB technology, you must first make sure that your PC can access NetComm USB MFP server via TCP/IP. The simplest way to do this is using “Control Center” to search for the NetComm USB MFP server on the network and change its IP address to be the same subnet as your PC. If the MFP server and your PC are not in the same TCP/IP subnet, the Control Center will show the MFP server in green, as the following figure. You must change the IP address (or using DHCP) of the MFP server so that the MFP server and your PC are in the same subnet. Control Center will show these MFP servers in blue, meaning you can safely access these MFP servers by the NetUSB technology.

The steps to do remote installation for USB devices, like MFPs:

- A. Turn on NP3680W and the USB device.
- B. Connect the USB device to NP3680W. The LED of the USB port will light-on.
- C. Run the Control Center. In the “USB MFP Server List” window, you can see the host names and IP addresses all of the NP3680W servers (in blue) on the network, as the following figure.
- D. Click the server. Then all USB devices attached on the server will be shown.



- E. Please follow the user manual of the USB device to do the driver installation. For example, you may put the driver CD of the USB device in the CDROM to install the driver.
- F. When you are asked to plug in the USB device into PC's USB port, either before running the driver setup program or during the execution of the driver setup program (This depends on the USB device. Please check the user manual from the vendor.), click the desired USB device in the Control Center and then click the "Connect" button to do the Connect operation and get the ownership of the USB device, as the following figure. The computer name of the device owner will be shown at the end of the device.



6. PC will automatically detect the plug-in of the USB device. On the right side of Windows Task Bar, you can see the information of the new device. Continue to follow the user manual of the USB device to do the rest jobs of installation, until the driver installation finished.

After the installation, you can see the newly created devices on the PC. If the USB device is a MFP, you can see a new printer and a new scanner from the “Control Panel”.

8.3.2 NetUSB Printing

After the driver is installed as described in 8.3.1, you can see a newly created printer in the Control Panel's "Printers and Faxes" ("Printers" for Vista). Follow the steps below to do a NetUSB printing.

- A. In the Control Center, click the MFP server that has the desired printer (or MFP) attached.
- B. Click the desired printer (or MFP).
- C. Click the "Auto Connect Printer" button and choose "Set Auto-Connect Printer".
- D. Choose the desired printer. The desired printer must be the Windows printer (this is a logical printer) that matches the printer attached on the MFP server (this is a physical printer). Then click the "Apply" button.
- E. Then, the printer will be marked as an "Auto-Connected Printer" in red. If you choose "Auto-Connected Printer List" in the "Tools" menu, you can see a newly created item that describes the association between the Windows printer and the physical printer on the server.
- F. Then try to issue a print job to the desired printer. You will see the Control Center will automatically do a connect operation. Then, the print job will be issued to that printer. This is so-called "Auto Connect Printer" operation.
- G. Of course you can issue print jobs using manual "connect" and "disconnect" rather than "Auto Connect Printer". To do this, click on the printer, then click the "Connect" button. The name of the computer that has the ownership of the printer will be shown after the printer in the Control Center. Now you can issue print jobs to this printer. After all print jobs are finished, click the "Disconnect" button.
- H. Even if you have already properly setup an auto-connected printer, the Control Center must be running while a print job is issued. This means you'd better run the Control Center every time after you login to Windows. In order to skip this manual operation, you can make the Control Center run automatically after you login to Windows. To do this, choose the "Configuration" item in the "Tools" menu. The following window will appear.

Tick on the "automatically execute when login on windows" check box and then on the "OK" button.

- I. If you would like to break the association between the Windows printer and the physical printer, just click on the association and click the "Delete" button in the "Auto-Connected Printer List".

8.3.3 NetUSB Scanning

After the driver is installed, you can see a newly created scanner in the Control Panel's "Scanners and Cameras". Follow the steps below to do a NetUSB scanning.

- A. In the Control Center, click the MFP server that has the desired scanner (or MFP) attached.
- B. Click the desired scanner (or MFP).
- C. Click the "Connect" button to manually Connect the scanner (or MFP).
- D. Right-click the scanner icon in the Control Panel's "Scanners and Cameras", and choose "Get picture using Scanner Wizard", as the following figure.
- E. Then the "Scanner Wizard" will run. Set the options as your need. Then submit the scan job.
- F. After the scanning finished, click the "disconnect" button in the Control Center to release the ownership of the scanner (or MFP).

8.3.4 Accessing USB Storage using NetUSB Technology

Before you use NetUSB technology to access USB storage, please make sure the storage access mode is in NetUSB mode.

- A. In the Control Center, click the MFP server that has the desired USB storage device attached.
- B. Click the desired USB storage device.
- C. Click the “Connect” button to manually connect the USB storage device.
- D. Your PC will have a new disk. For example, if you connect a flash drive, your PC will have a new “removable disk”. You can see the storage icon in the system tray, as the following figure.
- E. Just use the new disk as a general disk.
- F. After you finish the disk operations, click the storage icon in the system tray and choose “Safely remove USB Mass Storage Device”.
- G. In the Control Center, click the “disconnect” button to disconnect the USB storage device.

Please note that by this way, FAT32 and NTFS file system can be fully supported.

8.4 Limitations

There are some limitations to use the NetUSB technology.

- A. Only one PC can get the ownership of the same USB device at the same time. Moreover, once a USB device is “connected” by a PC so that the PC “owns” that USB device, other PCs can not “access” this USB device by any means. For example, if a printer is connected by a PC using the NetUSB technology, no other PCs can print to this printer by LPR or SMB or IPP protocols, until the printer is disconnected.
- B. The “Auto Connect / Disconnect” function can only be used with printers. Only manually Connect/ Disconnect is supported for scanners or USB storage.
- C. For USB storage, although NTFS can be supported by the NetUSB technology, it can not be shared among network users.



Web Interface

9. The NP3680W Web Interface

9.1 Introduction

The Server runs the daemon of http server, httpd on TCP port: 80. Users may use the web pages to see the Server's system status and configure the Server.

9.2 Using the NP3680W Web Interface

1. If you don't know the current IP of you **NP3680W**, open the Control Center utility.
2. You can see the IP address of your **NP3680W** in the Server List.
3. Open a Web Browser and enter the **NP3680W**'s IP address or click the Home Icon of the Control Center.

9.2.1 Displaying NP3680W Interface

Click on Status in the menu bar. This will display the status of Host Information, TCP/IP and USB devices.



9.2.2 Setting up NP3680W Configuration

To set up the **NP3680W** configuration, the system will request user to enter user name (default: admin) and password (default: admin) to login.

General Configuration

- Set Host Information: You have to set some information for networking using SMB protocol:
- Comment: optionally set to describe the Server
- Host Name: the name to represent the Server for using SMB protocol

- **Workgroup:** the SMB workgroup name that the Server belongs to.
- **File Server Codepage:** if users want to communicate files using FTP client tool or SMB on Windows 2000 with the Server, they have to set their Server codepage to be same as the codepage that their Windows PC is using. Generally, the criteria of choosing codepage are based on your Windows codepage. For example, if your Windows codepage is Traditional Chinese, you have to select Traditional Chinese (Big5) in the Server. Please refer to the chapter "File Server".

TCP/IP

You have to set the Server's TCP/IP configuration to connect TCP/IP network. Please see Chapter 3 Basic Installation for more details.

Supported Protocols

The **NP3680W** supports the following TCP/IP protocols:

TCP/IP

- **Enable LPR (Line Printer Remote) Printing:** select or clear Enable LPR Printing support. It is enabled in Factory Default.
- **Enable IPP Printing:** select or clear Enable IPP Printing support. It is enabled in Factory Default.
- **Enable Raw TCP Printing:** select or clear Enable Raw TCP Printing support. It is enabled in Factory Default and users may set the protocol's TCP ports as following boxes: - TCP Port 1: set TCP port for the printer of USB1 port (default: 9100) - TCP Port 2: set TCP port for the printer of USB2 port (default: 9101)
- **Enable SMB/CIFS Print/File Server:** select or clear Enable SMB/CIFS Print/File Server support. It is enabled in Factory Default.
 - **Enable Internet Access:** select or clear Enable Internet Access support. If you clear the item, you do not allow that users can access your SMB/CIFS server via Internet. If you select the item, you allow Internet users can access your storage using the SMB/CIFS protocol.
 - **Enable Server Authentication:** select or clear Enable Server Authentication support. Select the item, if you want to share your storage or printer with user level security which requires user name and password to login. If you clear the item, your storage will be shared without security.

- **Enable FTP Server:** select or clear Enable FTP Server support. It is enabled in Factory Default and users may set some parameters as follows:
 - **FTP Port:** enter an integer number to set FTP server's TCP port (default: 21)
 - **Set Maximum Session Number:** select or clear Set Maximum Session Number support. You can limit the FTP session number by selecting the support and enter an integer to set the allowable maximum session number. If you clear the support, it means that FTP server will have not any limitation in session number.
 - **Set Passive Mode:** select or clear Set Passive Mode support that FTP server can accept passive mode.
 - **Enable Server Authentication:** select or clear Enable Server Authentication support. If you select the support, you need to enter user name and password to login to the Server. If you clear the support, you do not need user name and password to enter the Server.
 - **Allow Anonymous Login:** select the item, if you want to allow the user "anonymous" to login to your FTP server with Read-Only permission and FTP server will not check the password. If you clear the item, your FTP server will not support anonymous login function.
- **Enable SANE (Scanner Access Now Easy) Server:** select or clear Enable SANE Server support. It is enabled in Factory Default and users may set the TCP port as follows: - SANE Port: set SANE server's TCP port (default: 6566)
- **Enable UPnP (Universal Plug and Play):** select or clear Enable UPnP support. It is enabled in Factory Default.

Storage Access Mode

1. **Server Mode:** In this mode, you can access the USB storage via FTP or SMB/CIFS protocols. Only FAT16/32 file format is supported in this mode. This is the default mode.
2. **NetUSB Mode:** In this mode, you can access the USB storage using NetUSB technology. In this mode, FAT16/32 and NTFS file formats are supported, but only one user is allowed to access the storage at the same time. Please refer to chapter 9 for the details about NetUSB technology.

User Accounts

You can change administrator name and password or add a user account for SMB/CIFS Print/File server and FTP File server. If you forgot administrator name and password, you must perform Restore Factory Default action by plugging in the power adaptor while pressing the Init button. Please refer to the chapter "Restore Factory Defaults". Administrator owns the Read-Write Permission for File servers.

Set Administrator

- **New Administrator:** enter your desired administrator name.
- **New Password:** enter your desired password.
- **Retype Password:** confirm your previous password typing.

User Accounts list

- **User name:** add a new user account for accessing the storage attached to the Server.
- **Password:** set a password for added user.
- **Permission:** select Read-Only or Read-Write permission to access File servers.
- **Add:** click Add button, after entering the user name, corresponding password, and Permission selection. The account will take effect once shown in the blank below.
- **Delete:** delete the existing user account.

SNMP

This Server runs an SNMP daemon supporting SNMP v1, v2c, and v3 protocols (Simple Network Management Protocol). Users can use SNMP client software such as HP OpenView to manage the Server. The Server supports all relevant parts of MIB-II and a private MIB. You can set these MIB variables from the Server's web pages or by using the Control Center.

You can set community and some parameters for SNMP server. Furthermore, you can enable SNMP v3 for more security.

Set SNMP Configuration

- **Authentic Community:** set Community name of SNMP server.
- **Trap Community:** set Trap Community name for SNMP server to send trap packets.
- **Trap Address:** enter an IP address to send the Trap packet.
- **SysContact:** enter some letters for variable of SysContact that represents the name of system contact.
- **SysName:** enter some letters for variable of SysName that represents the name of system.
- **SysLocation:** enter some letters for variable of SysLocation that represents the location of system.
- **EnableAuthenTrap:** enter 1 or 2 for the variable of EnableAuthenTrap that represents to enable (1) or disable (2) to send Trap packets receiving the wrong Community name.

SNMP V3

- **Enable SNMP V3:** select or clear Enable SnmpV3 support
- **User Security name:** set user security name of SNMP v3
- **Auth Password:** set authentication password of SNMP v3.
- **Privacy Password:** set privacy password of SNMP v3.

Restart Server

Click this button, the Server will restart.

Maintenance

If you want to restore factory default values of the Server and upgrade new firmware, you can use the Maintenance tool.

- **Factory Default:** click this button, the Server will restore factory default values.
- **Download New Firmware from Website:** click this button to download new firmware or user software from this product's public website.
- **Upgrade Firmware:** click Open to find the firmware file to be upgraded. Click Upgrade to upload the firmware into the Server.



Email Alerting

10.Email Alerting

This Server emails a notification to the user at these events:

1. Adding or Removing a USB device.
2. System Error.



Troubleshooting

11. Troubleshooting

This chapter provides useful information to help you resolve difficulties that you may experience with your Server. Fault symptoms, possible causes, and remedial actions are provided within a quick reference table. This Server's USB ports only support MFPs, printers, scanners, and mass storage.

11.1 LED Indicators

Indicators	Color/Behavior	Description
Power	Green	Power On
	Not lit	Power off/System error
LAN	Green	Wired Network connected
	Not Lit	No wired connection to network
WLAN	Green	Wireless Network Connection
	Not lit	No wireless on connection to network
	Green blinking	Wireless network activity
USB1	Green	USB device connected
	Green blinking	Connected USB device error
	Not lit	No physical connection to USB device
USB2	Green	USB device connected
	Green blinking	Connected USB device error
	Not lit	No physical connection to USB device

USB Device Status

Devices	Status	Description
Printer	Ready	Printer is ready.
	Printing	Printer is printing.
	Out of paper	Printer is out of paper.
	Error	There are errors in network printing.
Mass Storage	Ready	Storage is ready.
	Error	There are errors in network File server.
Scanner	Ready	Scanner is ready.
	Flatbed Scanning	Flatbed of scanner is scanning.
	Scrollfed Scanning	Scrollfeed of scanner is scanning.
	Error	There are errors in network scanning.

Factory Defaults



12. Restore Factory Defaults

You may restore the Server's default parameters by one of the following methods.

12.1 Using the Control Center

1. Start the Control Center.
2. If the tool finds Servers in your local area network, then you have to select a Server from the Server List.
3. Double click the highlight list and enter the Server's username (default: **admin**) and password (default: **admin**).
4. After you have logged in successfully, from the **Server** menu, select **Maintenance**. The Maintenance dialog appears.
5. Click **Factory Default**.

12.2 Using the NP3680W's Web Pages

1. Go to the **NP3680W's** web page and click **CONFIG**.
2. Enter username (default: **admin**) and password (default: **admin**).
3. Click **Maintenance**.
4. Click **Factory Default**.
5. Click **Yes** to confirm.

12.3 Using Init Button

Plug in the power adaptor while holding the Init button until LED indicators of Power, USB1 and USB2 blink. After that, UNplug the power adaptor and then plug in the power adapter again to restart the **NP3680W**. Finally, the **NP3680W** will operate using the Factory Default values.

12.4 Default Parameters List

Host Information

- Comment (Optional): NP3680W USB MFP Server
- Host Name: NP3680W
- Workgroup: WORKGROUP
- Code Page of File Server: Western European

TCP/IP

- **Automatically get IP by DHCP:** Enabled
 - Manual DNS: None (Disabled).
- **Static IP:** Disabled
 - IP Address: 192.168.1.100
 - Subnet Mask: 255.255.255.0
 - Default Gateway: none
 - DNS Server: none

Supported Protocols

- **LPR Printing:** Enabled
- **IPP Printing:** Enabled
- **Raw TCP/JetDirect Printing:** Enabled
 - TCP Port (USB1): 9100
 - TCP Port (USB2): 9101
- **SMB/CIFS Print/File Server:** Enabled
 - Internet Access: Disabled
 - Server Authentication: Disabled
- **FTP Server:** Enabled
 - FTP Port: 21
 - Set Maximum Session Number: 5 (Enabled)
 - Passive Mode: Enabled
 - Server Authentication: Enabled
 - Allow Anonymous Login: Disabled
- **SANE Server:** Enabled
 - SANE Port: 6566
- **UPnP:** Enabled

User Accounts

- Administrator: admin
- Password: admin

SNMP

- Authentic Community: public
- Trap Community: public
- Trap Address: 0.0.0.0
- EnableAuthenTrap: 2 (disable)
- SNMPv3: Disabled
 - User Security Name: None
 - Auth Password: None
 - Privacy Password: None

Email

- SMTP Protocol: Disabled
- SMTP Server Name: None
- SMTP Port Number: 25
- Subject: None
- From Address: None
- To Address: None
- Cc: None
- SMTP Server requires authentication: Disabled
 - Account Name: None
 - Password: None

Maintenance

- Download New Firmware: <http://www.netcomm.com.au>

Upgrade Firmware



13. Upgrade Firmware

This chapter describes the three methods available to upgrade the **NP3680W** firmware. Please follow one of the following Procedures:

Procedure A: Using the Control Center

1. Open Control Center. It will automatically search the existing Servers and display their statuses.
2. Select the Server that you want to upgrade the firmware. Double click the selected Server and enter Administrator (default: **admin**) and Password (default: **admin**).
3. Select the **Maintenance** button.
4. Click **Open** to find your new firmware file and click **Upgrade** to start upgrading the firmware.
5. Wait for 15 seconds for system reboot.

Procedure B: Using the NP3680W's Web Interface

1. Power on the **NP3680W**. Suppose that the **NP3680W** is in DHCP mode.
2. Check the **NP3680W**'s IP address.
3. First, run Control Center. It will automatically search for **NP3680W** on the LAN. The **NP3680W**'s IP addresses will be shown in Control Center.
4. Run any Web browser, like Microsoft Internet Explorer. Go to "http://**NP3680W**'s IP address" or "http://**NP3680W**'s Host Name" to access the Server's home page.
5. Click **CONFIG** at the top of the menu.
6. Login the **NP3680W** with username (default: **admin**) and Password (default: **admin**).
7. Click **Maintenance**.
8. Click **Upgrade Firmware**.
9. Click **Browse** button to choose the file of new firmware.
10. Click **Upload** button to start firmware upgrade.
11. Wait for 15 seconds for system reboot.

Procedure C: Using the Init Button and the TFTP Client

1. Plug in the power adaptor while holding the Init button until LED indicators of Power, USB1 and USB2 blink.
2. Start the TFTP client Tool: Image Burner
3. Enter the **NP3680W's** Fallback IP address: 192.168.1.100 and click **Open Image** to open your new firmware. Please note that you must configure your PC's TCP/IP such that PC and the Server belong to the same LAN, i.e. PC's IP is 192.168.1.xxx and subnet mask is 255.255.255.0.
4. Click **Upload Image**.
5. Wait for Image Uploading to finish and then click **Close**.
6. Plug-off the power adapter and then plug-in the power adapter to restart the **NP3680W**.

The Init button is used for:



Unit Button

14. The Init Button

The Init button is used for maintenance. To initiate the maintenance mode, plug in the power adaptor while pressing the Init button until USB1 and USB2 LED indicators blink alternately. After that, the **NP3680W** will do the following tasks:

- A. Reset the **NP3680W** to factory default, which will restore most of the parameters and settings to factory default values,
- B. Become a TFTP server. You can upgrade new firmware using the “Image Burner” utility.

Note: After performing the tasks mentioned above, you have to plug off the power adaptor and then plug in the power adaptor to restart the **NP3680W**.

Appendix



APPENDIX A:

Cable Information

This cable information is provided for your reference only. Please ensure you only connect the appropriate cable into the correct socket on either this product or your computer.

If you are unsure about which cable to use or which socket to connect it to, please refer to the hardware installation section in this manual. If you are still not sure about cable connections, please contact a professional computer technician or NetComm for further advice.


RJ-45 Network Ports

RJ-45 Network Ports can connect any networking devices that use a standard LAN interface, such as a Hub/Switch Hub or Router. Use unshielded twisted-pair (UTP) or shield twisted-pair (STP) cable to connect the networking device to the RJ-45 Ethernet port. Depending on the type of connection, 10Mbps or 100Mbps, use the following Ethernet cable, as prescribed.

- 10Mbps: Use EIA/TIA-568-100-Category 3, 4 or 5 cable.
- 100Mbps: Use EIA/TIA-568-100-Category 5 cable.

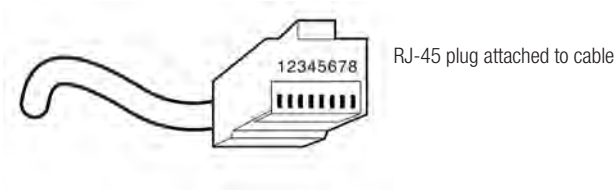
Note: To prevent loss of signal, make sure that the length of any twisted-pair connection does not exceed 100 metres.

Figure 1



RJ-45 Connector Pin Assignment	Normal Assignment
1	Input Receive Data +
2	Input Receive Data -
3	Output Transmit Data +
6	Output Transmit Data -
4,5,7,8	Not used

Figure 2



Straight and crossover cable configuration

There are two types of the wiring: Straight-Through Cables and Crossover Cables. Category 5 UTP/STP cable has eight wires inside the sheath. The wires form four pairs. Straight-Through Cables has same pinouts at both ends while Crossover Cables has a different pin arrangement at each end.

In a straight-through cable, wires 1,2,3,4,5,6,7 and 8 at one end of the cable are still wires 1~8 at the other end. In a crossover cable, the wires of 1,2,3,6 are reversed so that wire 1 become 3 at the other end of the cable, 2 becomes 6, and so forth.

To determine which wire is wire 1, hold the RJ-45 cable tip with the spring clip facing towards the ground and the end pointing away from you. The copper wires exposed upwards to your view. The first wire on the far left is wire 1. You can also refer to the illustrations and charts of the internal wiring on the following page.

Straight-Through Cabling

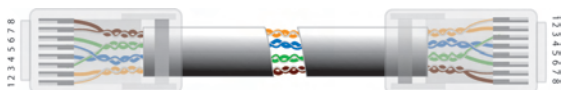


Figure 3

Wire	Becomes
1	1
2	2
3	3
6	6

Cross-Over Cabling



Figure 4

Wire	Becomes
1	3
2	6
3	1
6	2

Note: To prevent loss of signal, make sure that the length of any twisted-pair connection does not exceed 100 metres.

APPENDIX B: Registration and Warranty Information

All NetComm Limited ("NetComm") products have a standard 12 month warranty from date of purchase against defects in manufacturing and that the products will operate in accordance with the specifications outlined in the User Guide. However some products have an extended warranty option (please refer to your packaging). To be eligible for the extended warranty you must supply the requested warranty information to NetComm within 30 days of the original purchase by registering on-line via the NetComm web site at:

www.netcomm.com.au

Contact Information

If you have any technical difficulties with your product, please do not hesitate to contact NetComm's Customer Support Department.

Email:	technicalsupport@netcomm.com.au
Fax:	(+612) 9424-2010
Web:	www.netcomm.com.au

Copyright Information

This manual is copyright. Apart from any fair dealing for the purposes of private study, research, criticism or review, as permitted under the Copyright Act, no part may be reproduced, stored in a retrieval system or transmitted in any form, by any means, be it electronic, mechanical, recording or otherwise, without the prior written permission of NetComm Limited. NetComm Limited accepts no liability or responsibility, for consequences arising from the use of this product. Please note that the images used in this document may vary slightly from those of the actual product. Specifications are accurate at the time of the preparation of this document but are subject to change without notice.

NetComm Limited reserves the right to change the specifications and operating details of this product without notice. NetComm is a registered trademark of NetComm Limited. All other trademarks are acknowledged the property of their respective owners.

Customer Information

ACA (Australian Communications Authority) requires you to be aware of the following information and warnings:

- (1) This unit shall be connected to the Telecommunication Network through a line cord which meets the requirements of the ACA TSO08 Standard.
- (2) This equipment has been tested and found to comply with the Standards for C-Tick and or A-Tick as set by the ACA. These standards are designed to provide reasonable protection against harmful interference in a residential installation. This equipment generates, uses, and can radiate radio noise and, if not installed and used in accordance with the instructions detailed within this manual, may cause interference to radio communications. However, there is no guarantee that interference will not occur with the installation of this product in your home or office. If this equipment does cause

some degree of interference to radio or television reception, which can be determined by turning the equipment off and on, we encourage the user to try to correct the interference by one or more of the following measures:

- Change the direction or relocate the receiving antenna.
- Increase the separation between this equipment and the receiver.
- Connect the equipment to an alternate power outlet on a different power circuit from that to which the receiver/TV is connected.
- Consult an experienced radio/TV technician for help.

(3) The power supply that is provided with this unit is only intended for use with this product. Do not use this power supply with any other product or do not use any other power supply that is not approved for use with this product by NetComm. Failure to do so may cause damage to this product, fire or result in personal injury.

Product Warranty

The warranty is granted on the following conditions:

1. This warranty extends to the original purchaser (you) and is not transferable;
2. This warranty shall not apply to software programs, batteries, power supplies, cables or other accessories supplied in or with the product;
3. The customer complies with all of the terms of any relevant agreement with NetComm and any other reasonable requirements of NetComm including producing such evidence of purchase as NetComm may require;
4. The cost of transporting product to and from NetComm's nominated premises is your responsibility; and,
5. NetComm does not have any liability or responsibility under this warranty where any cost, loss, injury or damage of any kind, whether direct, indirect, consequential, incidental or otherwise arises out of events beyond NetComm's reasonable control. This includes but is not limited to: acts of God, war, riot, embargoes, acts of civil or military authorities, fire, floods, electricity outages, lightning, power surges, or shortages of materials or labour.
6. The customer is responsible for the security of their computer and network at all times. Security features may be disabled within the factory default settings. NetComm recommends that you enable these features to enhance your security.

The warranty is automatically voided if:

1. You, or someone else, use the product, or attempts to use it, other than as specified by NetComm;
2. The fault or defect in your product is the result of a voltage surge subjected to the product either by the way of power supply or communication line, whether caused by thunderstorm activity or any other cause(s);
3. The fault is the result of accidental damage or damage in transit, including but not limited to liquid spillage;
4. Your product has been used for any purposes other than that for which it is sold, or in any way other than in strict accordance with the user manual supplied;
5. Your product has been repaired or modified or attempted to be repaired or modified, other than by a qualified person at a service centre authorised by NetComm; and,
6. The serial number has been defaced or altered in any way or if the serial number plate has been removed.

Limitations of Warranty

The Trade Practices Act 1974 and corresponding State and Territory Fair Trading Acts or legalisation of another Government ("the relevant acts") in certain circumstances imply mandatory conditions and warranties which cannot be excluded. This warranty is in addition to and not in replacement for such conditions and warranties.

To the extent permitted by the Relevant Acts, in relation to your product and any other materials provided with the product ("the Goods") the liability of NetComm under the Relevant Acts is limited at the option of NetComm to:

- Replacement of the Goods; or
- Repair of the Goods; or
- Payment of the cost of replacing the Goods; or
- Payment of the cost of having the Goods repaired.

Product Warranty

NetComm products have a standard 12 months warranty from date of purchase. However some products have an extended warranty option, via registering your product online at the NetComm website www.netcomm.com.au.

Technical Support

If you have any technical difficulties with your product, please refer to the support section of our website.

www.netcomm.com.au/support

Note: NetComm Technical Support for this product only covers the basic installation and features outlined in the Quick Start Guide. For further information regarding the advanced features of this product, please refer to the configuring sections in the User Guide or contact a Network Specialist.



NETCOMM LIMITED PO Box 1200, Lane Cove NSW 2066 Australia
P: 02 9424 2070 **F:** 02 9424 2010
E: sales@netcomm.com.au **W:** www.netcomm.com.au



DYNALINK NZ 224b Bush Road, Albany, Auckland, New Zealand
P: 09 448 5548 **F:** 09 448 5549
E: sales@dynalink.co.nz **W:** www.dynalink.co.nz

Trademarks and registered trademarks are the property of NetComm Limited or their respective owners.
Specifications are subject to change without notice. Images shown may vary slightly from the actual product.