

NetComm MyZone

Mobile 3G WiFi Router

NetComm®



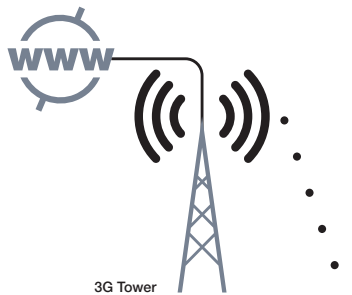
KEY FEATURES

- ⌚ Stylish, Ultra-Compact and Mobile – built-in 3G Modem, Wireless Access Point, Router and Rechargeable Battery
- ⌚ Convenient Credit Card Size - Ideal Companion for Apple iPad, iPod touch and Sony PSP™
- ⌚ Insert Your Data SIM Card and Create a Wireless Hotspot
- ⌚ High-Speed Internet Access for up to 6 Devices Simultaneously with a Single Mobile Broadband Account
- ⌚ HSDPA Downlink speed up to 7.2 Mbps / HSUPA uplink up to 5.76Mbps
- ⌚ Supports Wireless G Standard with Data Speeds up to 54 Mbps¹ on Local Area Network (LAN)
- ⌚ Battery Powered for 4 to 6 Hours in One Power Charge Cycle
- ⌚ Full Wireless Security Features - WEP, WPA, WPA2
- ⌚ Simple Configuration and Management via Web Browser
- ⌚ No Driver and Dialer Software Required to Connect to the Internet
- ⌚ Works with Windows 7/Vista/XP, Mac OS X, Linux and iPhone OS

Model Code/ Part Number	Description	Module/Chipset	3G Bands	APN Code
3G24W	NetComm MyZone - Mobile 3G WiFi Router	Qualcomm MSM7227	Tri-Band (850/1900/2100 MHz)	9317773014181
3G24W-QAU	NetComm MyZone - Mobile 3G WiFi Router (ANZ Version)	Qualcomm MSM7227	Quad-Band (850/900/1900/2100 MHz)	9317773014426
3G24W-QUK	NetComm MyZone - Mobile 3G WiFi Router (UK Version)	Qualcomm MSM7227	Quad-Band (850/900/1900/2100 MHz)	9317773014433

NetComm MyZone

Mobile 3G WiFi Router



3G Tower

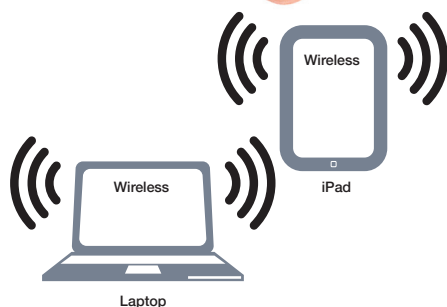
FAST, ULTRA-COMPACT AND STYLISH. GET THE MOST OUT OF YOUR MOBILE BROADBAND PLAN AND SET UP A WIRELESS NETWORK WHEREVER YOU NEED IT

NetComm's MyZone is a mobile and versatile solution for wireless mobile broadband for the office or on the road. The MyZone creates an instant Wireless G hotspot allowing you to share the mobile broadband Internet connection of the built-in 3G modem across multiple devices like smart phones, netbooks, laptops and other computers.

Connecting to the Internet is achieved by simply inserting a compatible 3G data SIM card into the MyZone's SIM card slot. The integrated Lithium-Ion battery delivers power for 4 to 6 hours of operation with 40 hours for idle time or you can power the device endlessly with a suitable USB power source. The device also features advanced security such as VPN pass-through and a full complement of wireless security options. The setup is simple via NetComm's browser interface.

1 Maximum wireless signal rate and coverage values are derived from IEEE Standard 802.11g specifications. Actual wireless speed and coverage are dependent on network and environmental conditions included but not limited to volume of network traffic, building materials and construction/layout.

**Depends on 3G network conditions



Laptop

TECHNICAL SPECIFICATIONS

HARDWARE SPECIFICATIONS

- Qualcomm MSM7227(600MHz) + RTR6285
- Qualcomm PMIC7540
- Physical Dimension: 97 x 60.6 x 9mm
- Weight: 77g
- Battery Capacity: Li-ion 1350mAh
 - 4-6 hours operation
 - 40 hours for idle time

RADIO FREQUENCIES SUPPORTED

- Quad-band 3G: 850/900/1800/1900 MHz
- Quad-band 2G: 850/900/1800/1900 MHz
- Diversity: 2100 MHz
- Wireless IEEE 802.11b/g support

DATA THROUGHPUT

- HSPA Mode: Category 6
- Uplink: Up to 5.76Mbps
- HSDPA Mode: Category 8
- Downlink: Up to 7.2Mbps
- EDGE Mode: Multi slot Class 12

I/O INTERFACE

- Micro-USB connector (type B)
- SIM card slot

INDICATOR

- Power/Battery
- 3G

BUTTON

- Power/Reset button

SETTINGS

- All settings of MyZone can be configured via web

INFORMATION

- Signal Strength and connectivity status of WiFi and 3G
- Operator Name
- SIM card PIN code configuration
- Battery status
 - 5 levels: Full, High, Low, Very Low, Empty
- Traffic monitor
 - Received, Transmitted and Connected time
- Router network configuration information
 - IP address, DNS, net mask
- WiFi configuration information
 - SSID, channel, security
- Connected client status
 - IP address, MAC address, host name

SECURITY

- WiFi authentication - WEP, WPA, WPA2
- GPRS authentication - PAP, CHAP

NETWORK PROTOCOL

- DHCP
- DNS proxy
- NAT/NAPT - ALG support for VoIP
- Port forwarding - virtual server
- VPN Passthrough

3G DATA LINK PROFILE CONFIGURATION

- Auto-Connect mode
 - Auto detect SIM card APN and configure data link profile accordingly
- Manual mode
 - User input settings like APN, authentication, username/password

COMPLIANCE

- A-Tick/CE/FCC

NETCOMM LIMITED

PO Box 1200, Lane Cove NSW 2066
Sydney, Australia ABN 85 002 490 486

AUSTRALIAN ENQUIRIES

P: (02) 9424 2070
F: 1800 063 962
E: sales@netcomm.com.au
W: www.netcomm.com.au

NEW ZEALAND ENQUIRIES

P: (09) 448 5548
F: (09) 448 5549
E: sales@netcomm.co.nz
W: www.netcomm.co.nz

INTERNATIONAL ENQUIRIES

P: +61 2 9424 2070
F: +61 2 9424 2010
E: int.sales@netcomm.com.au
W: www.netcommlimited.com