



---

## **Wireless Security Guide**

(for Windows XP, Windows Vista, Windows 7, Mac Osx)

**(NB604n)**

## Wireless Security Guide

This guide will take you through the process of configuring, changing or checking the wireless security settings on an existing wireless network.

This guide **will not** assist you to setup a new wireless network. Please refer to the wireless setup document for your model available from the support section of the [NetComm\\*](#) or [Dynalink\\*\\*](#) website.



Any changes to your wireless security settings will require you to reconfigure wirelessly connected devices to use the new security settings. Please ensure that you have your wireless setup guide handy for this.

\* NetComm Support - <http://www.netcomm.com.au/support>

\*\* Dynalink Support - <http://www.dynalink.co.nz/cms/index.php?page=how-to>

## Step 1: Selecting a wireless security type:

There are a number of different types of wireless security to select from.

Before changing your settings, check the types of security available on your modem/router and then consult your wireless adapter manufacturer to ensure your wireless adapter is compatible with your chosen security type.

The most commonly used security types are:

- WEP (64bit or 128bit)
- WPA (Radius)
- WPA-PSK
- WPA2 (Radius)
- WPA2-PSK

The majority of wireless adapters should support one (or all) of the above security types.



You will be unable to utilise Radius server authentication without having a Radius server in place and configured on your network.

## Step 2: Selecting a wireless security key:

Once you have chosen which wireless security type you want to use on your network, you will then need to create your wireless security key or wireless password.

Depending on the security type you choose, you will have the option of using either an ASCII or HEX format key.

ASCII refers to any letter or number you can see on your keyboard.

HEX refers to the letters A to F and the numbers 0 to 9.

You will need to ensure that your security key is the correct length. Your modem/router will display the required number of characters (letters and/or numbers) you need.



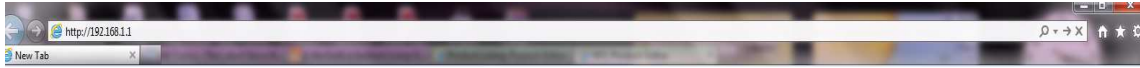
The default WEP key for most NetComm products is:

**a1b2c3d4e5**

### Step 3: Setting up your wireless security:

Please ensure that your modem/router is connected to your computer using an ethernet cable before continuing.

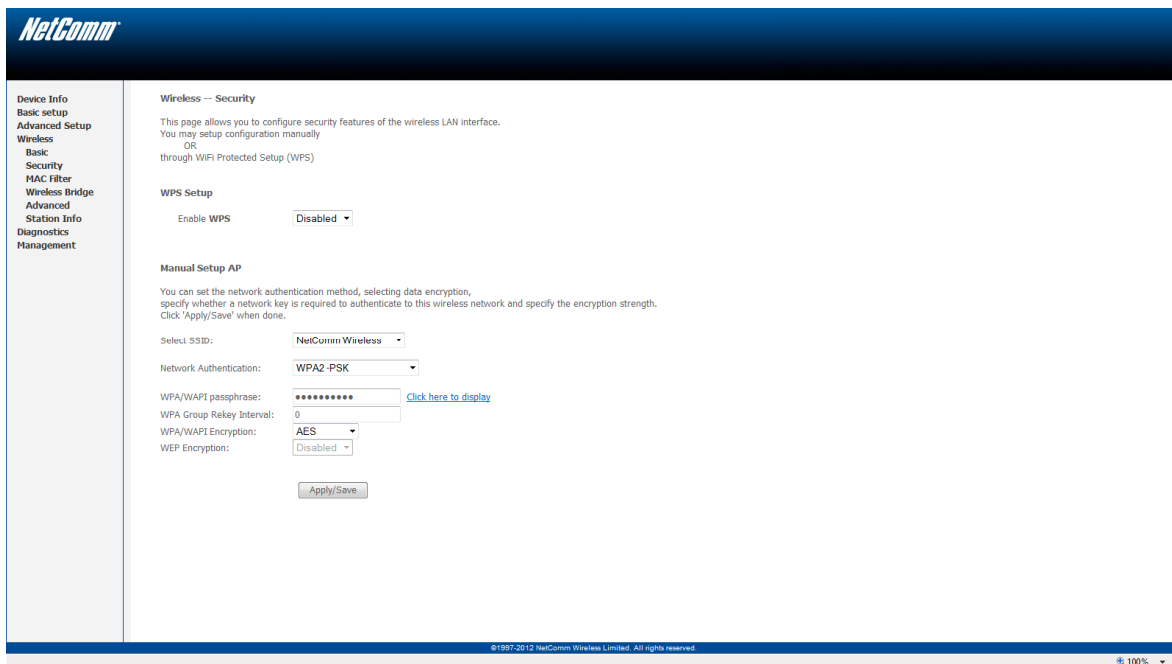
1. Open your web browser and navigate to the site <http://192.168.1.1>



2. Use "admin" (without the quotes) for the username and "admin" (without the quotes) for the password.



3. Click on Wireless then click on Security from the left-hand menu.
4. Ensure Enable WPS is set to Disabled.



NetComm

Device Info  
Basic setup  
Advanced Setup  
Wireless  
Basic  
Security  
MAC Filter  
Wireless Bridge  
Advanced  
Station Info  
Diagnostics  
Management

Wireless -- Security

This page allows you to configure security features of the wireless LAN interface.  
You may setup configuration manually  
OR  
through WiFi Protected Setup (WPS)

WPS Setup

Enable WPS: Disabled

Manual Setup AP

You can set the network authentication method, selecting data encryption, specify whether a network key is required to authenticate to this wireless network and specify the encryption strength. Click 'Apply/Save' when done.

Select SSID: NetComm Wireless

Network Authentication: WPA2-PSK

WPA/WAPI passphrase: \*\*\*\*\* [Click here to display](#)

WPA Group Rekey Interval: 0

WPA/WAPI Encryption: AES

WEP Encryption: Disabled

Apply/Save

©1997-2012 NetComm Wireless Limited. All rights reserved. 100%

5. For this example we will use WPA2-PSK as the Network Authentication. If you would like to select a different network security type instead, click the drop down menu in the "Network Authentication" section and select the desired security type.

6. After selecting your desired security type (we're using WPA2-PSK for the example), enter the wireless security key you would like to use into the "**WPA/WAPI Passphrase:**" field and click "**Save/Apply**".
7. If you are using WPA-PSK or WPA2-PSK security and would like to view your currently set wireless security key, click on "**Click here to display**". You should then see a pop-up window showing your wireless security key.
8. Click **Apply/Save**, to allow changes made to take effect.

Any changes to your wireless security settings will require you to reconfigure any wirelessly connected devices to use the new security settings. You will now need to re-setup any wirelessly connected computers with the new wireless security key. Please ensure that you have your wireless setup guide handy for this.