



NetComm Wireless

How To Get The Wireless Security Key

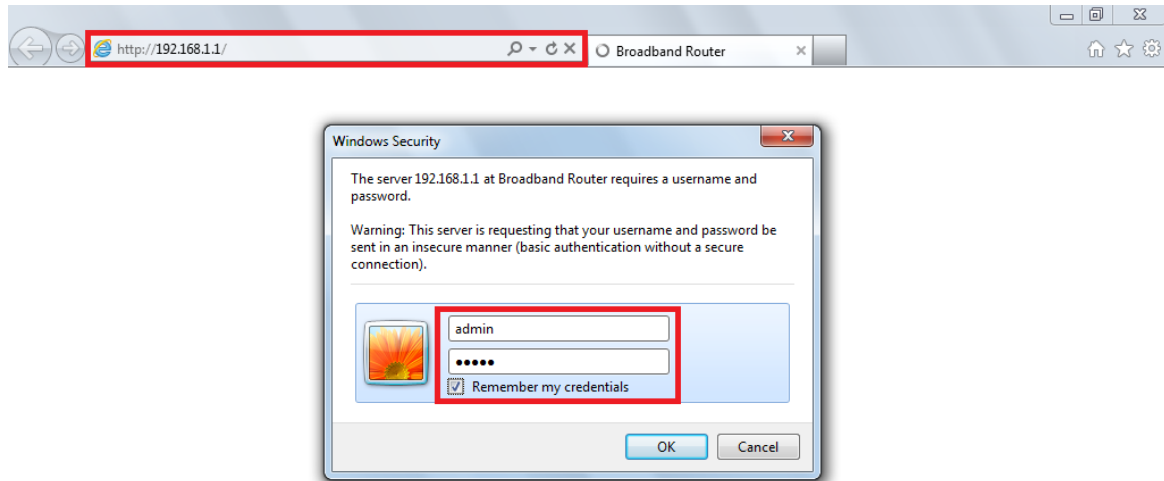
(NB604n)

What is the Wireless Security Key?

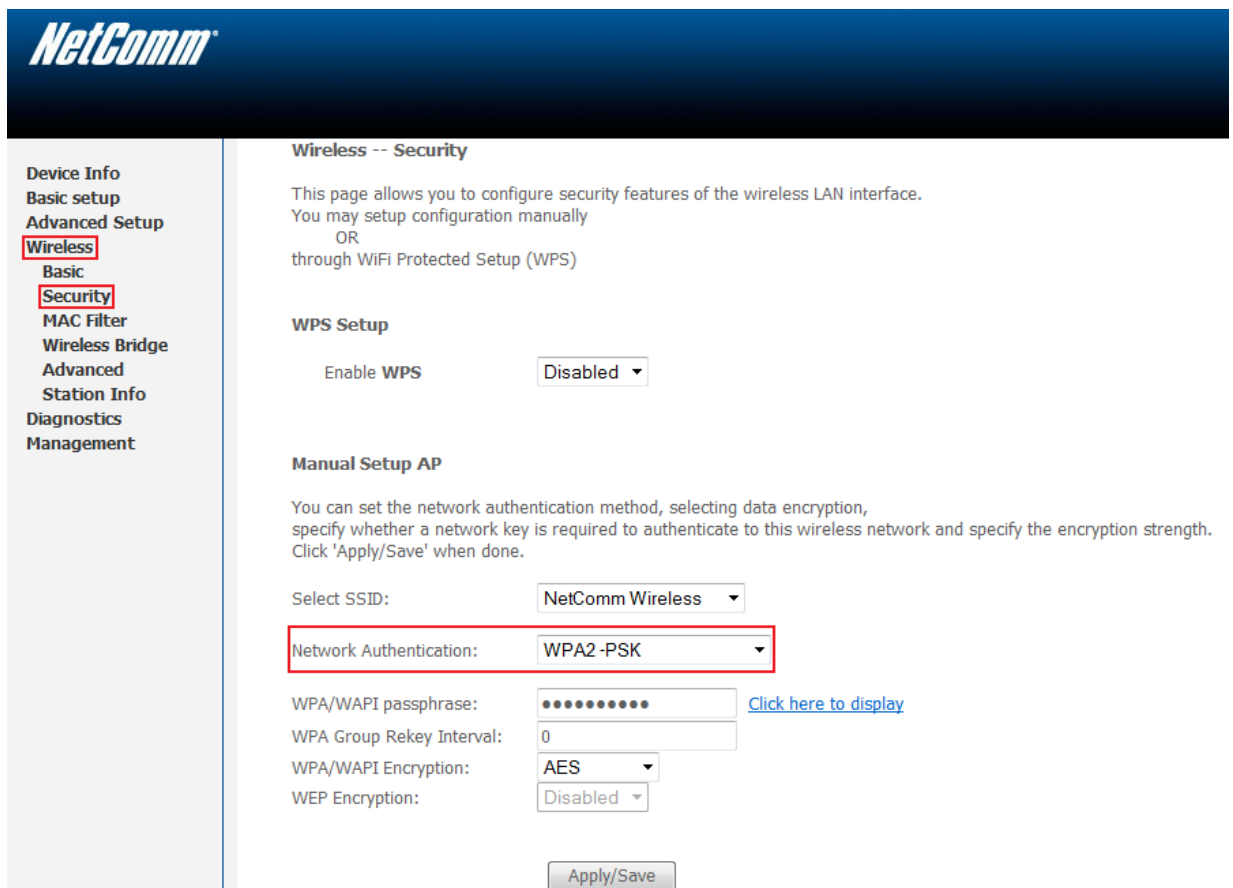
The wireless security is also known as the WEP key, WPA key, Passphrase or WiFi password. This guide will take you through the steps on how to check what the current wireless security key is. Please ensure that your modem/router is connected to your computer using an ethernet cable before continuing.

Step 1: Determining the Network Authentication Type

1. Navigate to <http://192.168.1.1> in a web browser.



2. Enter "admin" for both username and password when prompted then click **OK**.
3. Click on the **Wireless** menu then click the **Security** option.

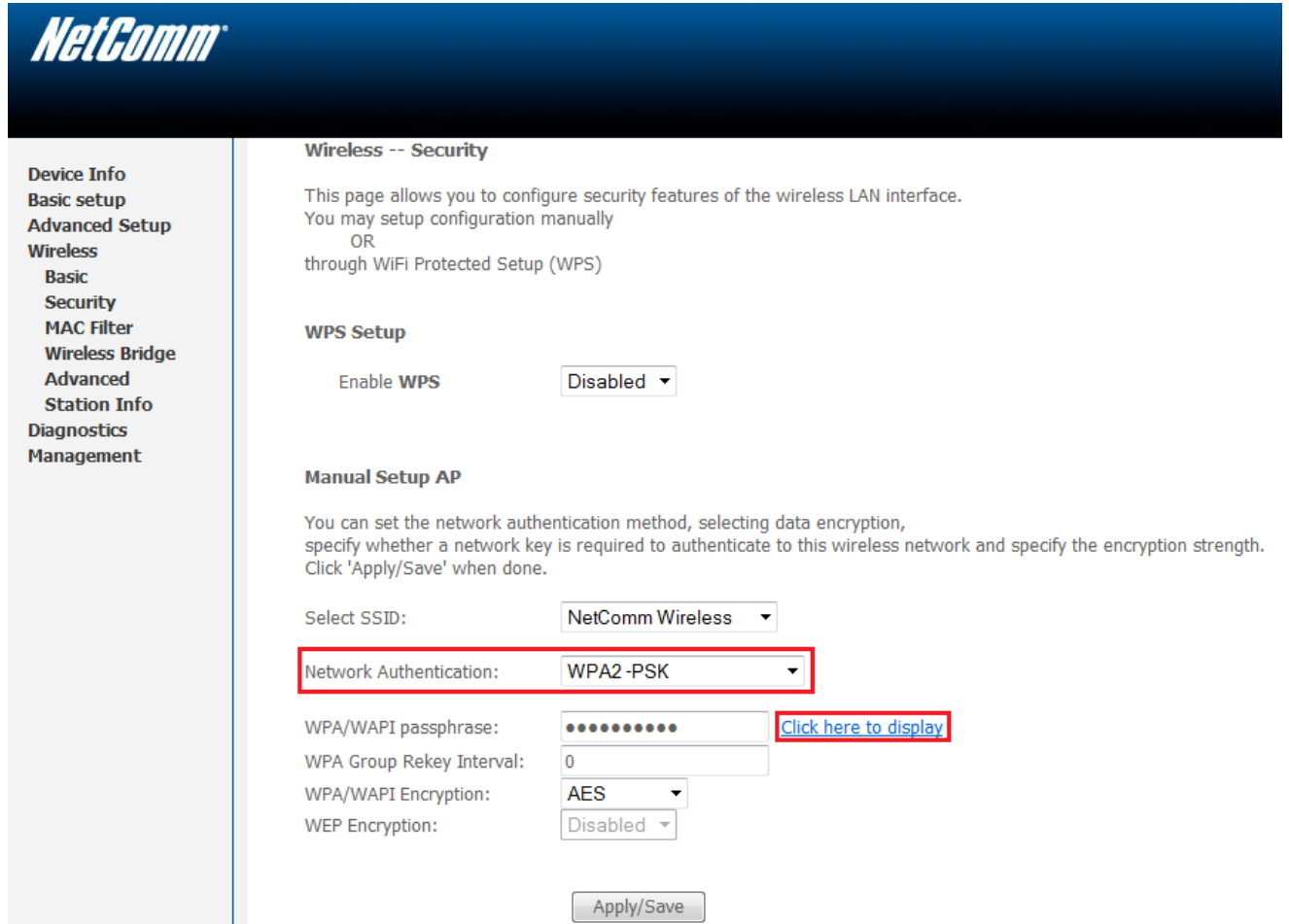


4. Under the Manual Setup AP settings, check what the *Network Authentication* type is. The example above shows that the Network Authentication type is *WPA2-PSK*. There are other types that can be used. Please refer to the next step for the corresponding security type.

Step 2: Checking the Wireless Security Key/Passphrase

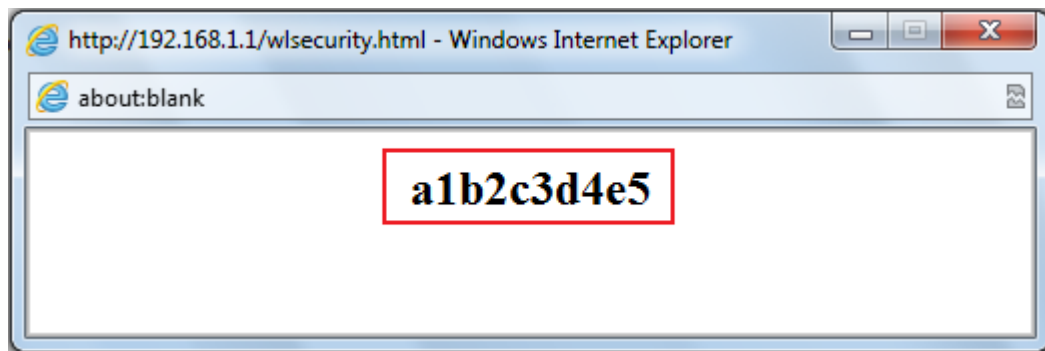
For Network Authentication Types: WPA-PSK, WPA2-PSK and Mixed WPA2/WPA-PSK

1. Click the link that says **Click here to display**.



The screenshot shows the NetComm web interface for wireless security configuration. The left sidebar contains a navigation menu with items: Device Info, Basic setup, Advanced Setup, Wireless, Basic, Security, MAC Filter, Wireless Bridge, Advanced, Station Info, Diagnostics, and Management. The main content area is titled "Wireless -- Security" and contains the following text: "This page allows you to configure security features of the wireless LAN interface. You may setup configuration manually OR through WiFi Protected Setup (WPS)". Under "WPS Setup", there is a field "Enable WPS" set to "Disabled". Under "Manual Setup AP", there is a section for "Select SSID:" with a dropdown menu showing "NetComm Wireless". Below that, "Network Authentication:" is set to "WPA2-PSK" and is highlighted with a red box. The "WPA/WAPI passphrase:" field is masked with dots and has a "Click here to display" link next to it, which is also highlighted with a red box. Other fields include "WPA Group Rekey Interval:" set to "0", "WPA/WAPI Encryption:" set to "AES", and "WEP Encryption:" set to "Disabled". An "Apply/Save" button is at the bottom.

2. A small window will pop up and display the current wireless security key. The example below shows the security key as **a1b2c3d4e5**



For Network Authentication Types: Open (WEP Encryption is Enabled) or Share (WEP Encryption is Enabled)

1. Check what the **Current Network Key** is. In this example, it is **1**.

NetComm

Device Info
Basic setup
Advanced Setup
Wireless
Basic
Security
MAC Filter
Wireless Bridge
Advanced
Station Info
Diagnostics
Management

Wireless -- Security

This page allows you to configure security features of the wireless LAN interface.
You may setup configuration manually
OR
through WiFi Protected Setup (WPS)

WPS Setup

Enable WPS

Manual Setup AP

You can set the network authentication method, selecting data encryption, specify whether a network key is required to authenticate to this wireless network and specify the encryption strength. Click 'Apply/Save' when done.

Select SSID:

Network Authentication:

WEP Encryption:

Encryption Strength:

Current Network Key:

Network Key 1:

Network Key 2:

Network Key 3:


Network Key 4:

Enter 13 ASCII characters or 26 hexadecimal digits for 128-bit encryption keys
Enter 5 ASCII characters or 10 hexadecimal digits for 64-bit encryption keys

2. The current wireless security key is the corresponding Network Key. In this example, it is **Network Key 1** since the Current Network Key is also 1.

For Network Authentication Type: Open (WEP Encryption is Disabled)

Note: There is no Wireless Network key since the wireless security is disabled. It is not required to type any key when connecting to the wireless network.



Device Info
Basic setup
Advanced Setup
Wireless
Basic
Security
MAC Filter
Wireless Bridge
Advanced
Station Info
Diagnostics
Management

Wireless -- Security

This page allows you to configure security features of the wireless LAN interface.
You may setup configuration manually
OR
through WiFi Protected Setup (WPS)

WPS Setup

Enable WPS

Manual Setup AP

You can set the network authentication method, selecting data encryption, specify whether a network key is required to authenticate to this wireless network and specify the encryption strength. Click 'Apply/Save' when done.

Select SSID:

Network Authentication:

WEP Encryption: