



# N300 WiFi Gigabit Router

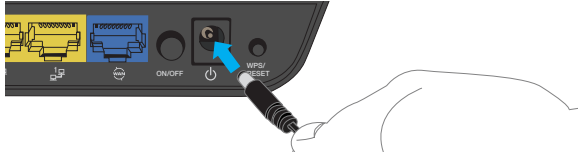


# THANKS FOR PURCHASING NETCOMM WIRELESS

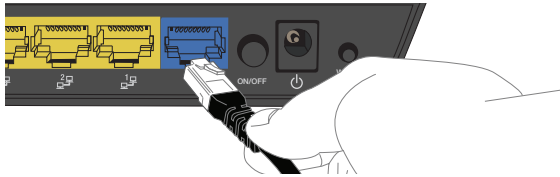
This quick start guide is designed to get you up and running quickly with your new router. More advanced set up instructions can be found in the user manual which can be downloaded from [www.netcommwireless.com](http://www.netcommwireless.com)

## SET UP YOUR ROUTER

1. Take the supplied **power adapter** and attach it to the Power socket on the rear of the router and connect the other end of it to a wall plug power source.

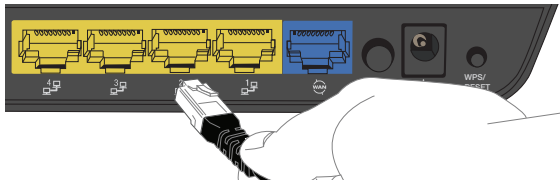


2. Attach the **Ethernet cable** provided to the blue **WAN** port on the back of the router. Attach the other end to your fixed line modem.



## CONNECTING VIA AN ETHERNET CABLE

1. Connect an **Ethernet cable** to one of the yellow **LAN** ports on the back of the NF7 router.



2. Connect the other end of the **Ethernet cable** to your computer.

**NOTE:** There is only one Ethernet cable supplied. If you require more than one Ethernet cable, any standard Ethernet cable is suitable.

## CONNECTING VIA WIFI

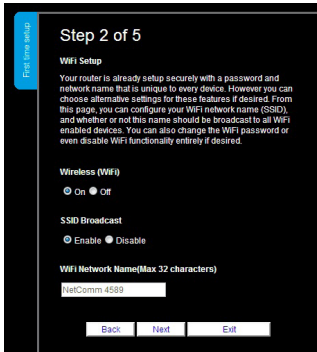
1. Ensure WiFi is enabled on your device (e.g. computer/smartphone/gaming console).
2. Scan for wireless networks in your area and connect to the network name that matches the **Wireless Network Name** found on the **Wireless Security Card** (included in the box).
3. When prompted for your wireless security settings, enter the **Wireless Security Key** listed on your **Wireless Security Card**.

## CONNECTING THE ROUTER TO THE INTERNET

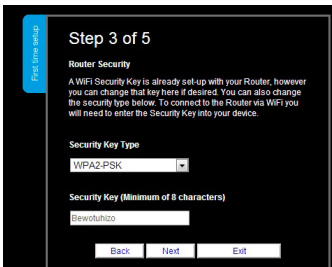
1. After establishing a connection using the previous steps, open your Web browser and type **http://192.168.20.1** into the address bar at the top of the web browser window and press **Enter**.
2. Enter **admin** into both the username and password fields and click **Login**. The First-Time Setup Wizard is displayed.
3. Click the **Yes, Let's get started with the wizard** button to configure your NetComm Wireless Router.
4. Select the Ethernet WAN type and enter details as supplied by your Internet Service Provider. After entering the required details, click **Next**.



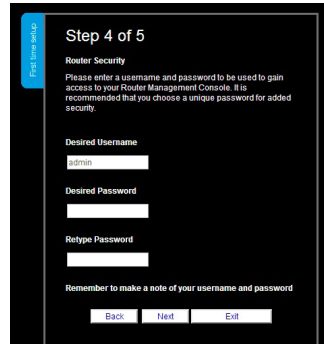
5. Choose whether to enable or disable your wireless network, show or hide your wireless network name (Hide SSID) or change the wireless network name. After making any desired changes, click **Next**.



6. Select the wireless security type and wireless security key you would like to use on your wireless network and click **Next**. To use the default settings, just click **Next**.

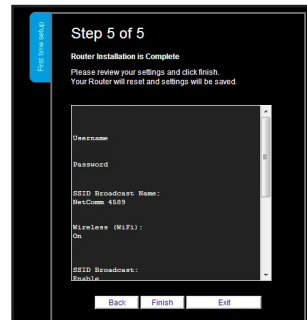


7. Enter the username and password you would like to use when logging into the web based user interface. Confirm the new password by entering it a second time in the Retype Password field and click **Next**. To use the default settings, just click **Next**.



*Note: We highly recommend that you change the username and password used to gain access to the Router Management Console. We recommend that you choose a unique password for added security.*

8. Review your selected settings and click **Finish**. If you would like to change any of the settings, click **Back** until you reach the required page and adjust your settings accordingly. Click **Next** until you reach the summary page again and then click **Finish**.



The NetComm Wireless Router will attempt to connect using the details you have entered. This can take up to **2 minutes**. When a connection is successfully made, the Internet Connection LED on the front of the unit illuminates.