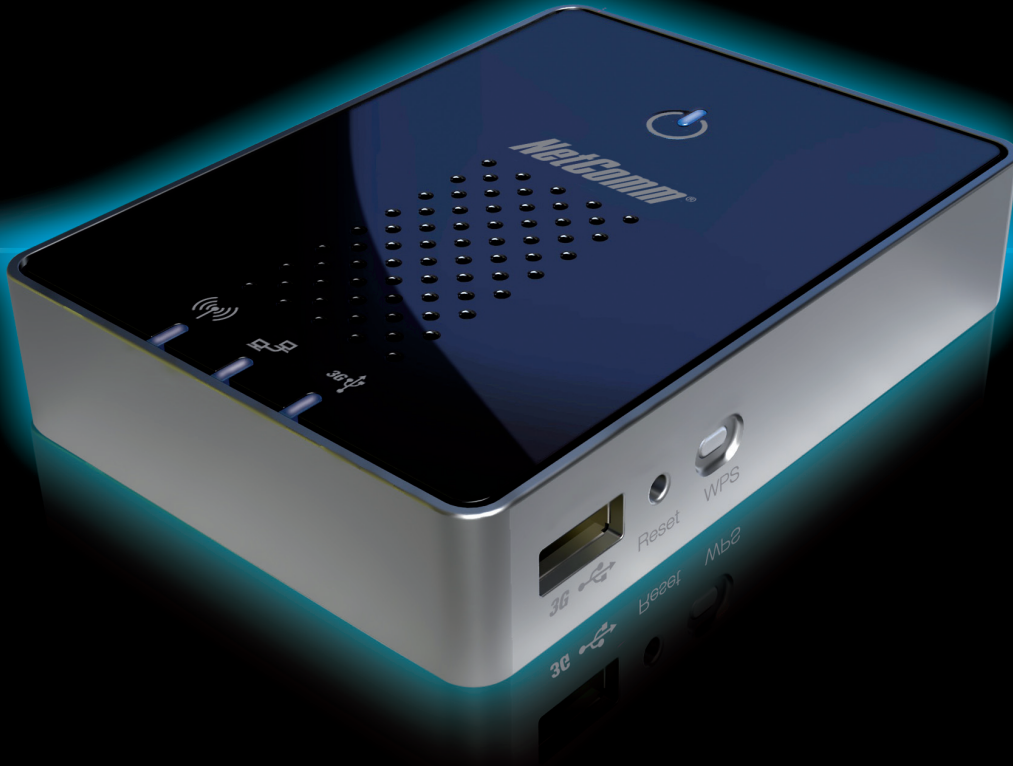


# 3G Travel Router - t1

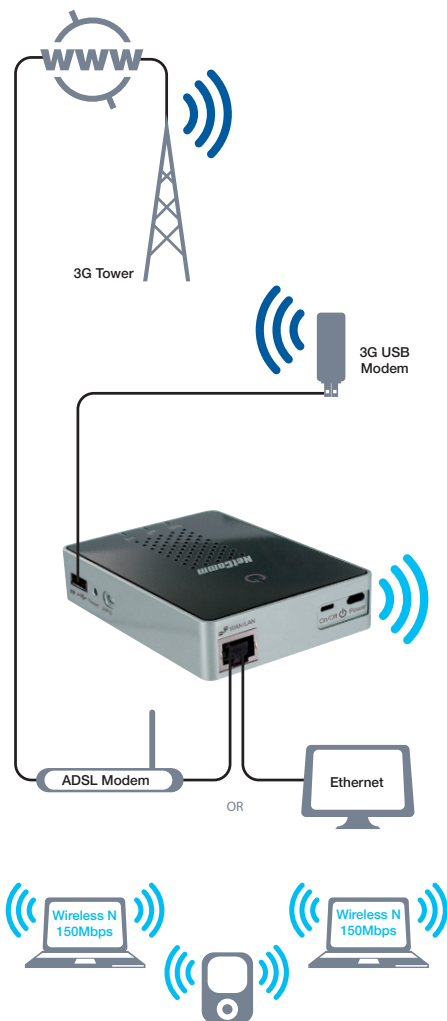


## KEY FEATURES

- ④ Stylish and compact 3G Travel Router with internal antenna and battery
- ④ Creates instant Wireless hotspots to share the Internet connection of a 3G USB modem or DSL/Cable modem
- ④ Supports Wireless N standard with data speeds up to 150Mbps<sup>1</sup>
- ④ One USB 2.0 Host port supports 3G USB modems
- ④ Compatible with all 3G/UMTS/ HSPA/ EV-DO/ USB modems from leading vendors
- ④ One WAN port for alternate wired Internet connection (DSL/Cable/Satellite via Ethernet)
- ④ Ensures connectivity and business continuity with auto Internet failover from WAN port to 3G USB modem
- ④ Mains-operated or up to 5 hours battery power if no power point is available
- ④ Easy Wi-Fi Protected Setup (WPS) by the single touch of a button to establish a secure wireless connection
- ④ Full Wireless security - WEP, WPA, WPA2
- ④ Browser based interface for configuration and management: OS independent and easy to use

Model Code/ Part Number	Description	APN Code
3GT1WN	NetComm Liberty™ Series 3G Travel Router t1	9317773013641

# 3G Travel Router - t1



STYLISH, COMPACT AND PORTABLE. UNLEASH THE POWER OF YOUR 3G USB MODEM AND SET UP A WIRELESS NETWORK WHEREVER YOU NEED IT

**NetComm's 3G Travel Router t1** is a versatile and portable solution for wireless mobile broadband for the home, office or on the road. This device creates an instant Wireless N hotspot allowing you to share an Internet connection across multiple devices like smart phones, gaming consoles or other computers. With wireless data speeds of up to 150Mbps it is 300% faster than Wireless G technology<sup>1</sup>.

Connection to the Internet is achieved through either a 3G USB modem or via a fixed line (DSL/Cable/Satellite) connection to the routers WAN port. The integrated Lithium-Ion battery delivers networking power for up to 5 hours in one power-charge-cycle, which means you can set up your own Wi-Fi network without searching for a power point.

Featuring automatic Internet failover, this device will keep you connected. In case the DSL/Cable/Satellite connection drops out, it activates the 3G connection. The WAN port can also be configured optionally as a LAN port for a wired connection to a network client.

The device also features advanced security such as VPN pass-through, a full complement of wireless security options and a built in firewall. The setup is simple via NetComm's browser interface. The firmware can be updated via NetComm's website to take advantage of upcoming features.

The **NetComm 3G Travel Router t1** supports an extensive range of 3G USB modems from most major 3G carriers and is compatible with Mac OS X, Windows OS and Linux. For more information see [www.netcomm.com.au](http://www.netcomm.com.au) for compatibility list.

<sup>1</sup> Maximum wireless signal rate and coverage values are derived from IEEE Standard 802.11g and 802.11n specifications. Actual wireless speed and coverage are dependent on network and environmental conditions included but not limited to volume of network traffic, building materials and construction/layout.

## TECHNICAL SPECIFICATIONS

### HARDWARE

- CPU – Ralink RT3050, embedded RF/MAC/BBP
- Memory – 4MB Flash, 32MB SDRAM
- 1x USB 2.0 Port – for 3G USB Data Modem
- 1x WAN Port (RJ-45) – Fast Ethernet 10/100 Auto-MDI/MDIX
- WPS Button
- Reset Button
- LED – Power/3G/WAN/Wireless

### WIRELESS

#### Standards

- IEEE 802.11n up to 150Mbps
- IEEE 802.11g up to 54kbps
- IEEE 802.11b up to 11kbps

#### Antenna

- 1x Internal

#### Security

- Wi-Fi Protected Setup (WPS)
- WEP 64-bit/128-bit encryption
- WPA/WPA2 encryption
- 802.1x authentication
- MAC address filtering
- Multiple SSID

### SOFTWARE FEATURES

#### Operation Mode

- Access Point
- Router

#### LAN

- DHCP Server
- Static Routing Table
- UPnP

#### WAN

- PPTP
- PPPoE
- Static IP
- DHCP Client
- Clone MAC
- 3G

#### Router

- Supports DSL and 3G WAN Access and Auto Fail Over
- NAT/NAPT IP Sharing
- Supports DDNS (DynDNS, TZO)
- DHCP Server
- Static Routing
- Dynamic Route
- Virtual Server Mapping

#### Firewall

- Anti-DoS Firewall
- MAC/IP/packet filtering
- DMZ

- Port Forwarding
- Supports Special Applications (Port Triggers)

#### VPN

- VPN Pass Through (IPSec/PPTP)

#### Wireless Features

- WMM

#### Management

- Web-based configuration
- Firmware Upgradeable
- Administration Password Change
- System Status and Security Logs
- NTP server

#### POWER

- Mains-operated: DC 5V / 2.5A
- Battery-powered: 3.7V 1700mAh NP-120 Li-Ion
- Battery life: 2.5 - 5hours

#### ENVIRONMENTAL AND PHYSICAL

- Operating Temperature Range: 0-40°
- Dimensions: 103mm (L) x 76mm (W) x 22mm (H)

#### PACKAGE INCLUDES

- NetComm Protection Bag with Cord
- RJ45 Ethernet Networking Cable
- International Travel Power Adapter with Interchangeable Power Plugs for ANZ, EU, UK, US
- User Manual on CD
- Li-Ion Battery

### NETCOMM LIMITED

PO Box 1200, Lane Cove NSW 2066  
Sydney, Australia ABN 85 002 490 486

### AUSTRALIAN ENQUIRIES

**P:** (02) 9424 2070  
**F:** 1800 063 962  
**E:** [sales@netcomm.com.au](mailto:sales@netcomm.com.au)  
**W:** [www.netcomm.com.au](http://www.netcomm.com.au)

### NEW ZEALAND ENQUIRIES

**P:** (09) 448 5548  
**F:** (09) 448 5549  
**E:** [sales@netcomm.co.nz](mailto:sales@netcomm.co.nz)  
**W:** [www.netcomm.co.nz](http://www.netcomm.co.nz)

### INTERNATIONAL ENQUIRIES

**P:** +61 2 9424 2070  
**F:** +61 2 9424 2010  
**E:** [int.sales@netcomm.com.au](mailto:int.sales@netcomm.com.au)  
**W:** [www.netcommlimited.com](http://www.netcommlimited.com)