

**NetComm**<sup>®</sup>  
*www.netcomm.com.au*



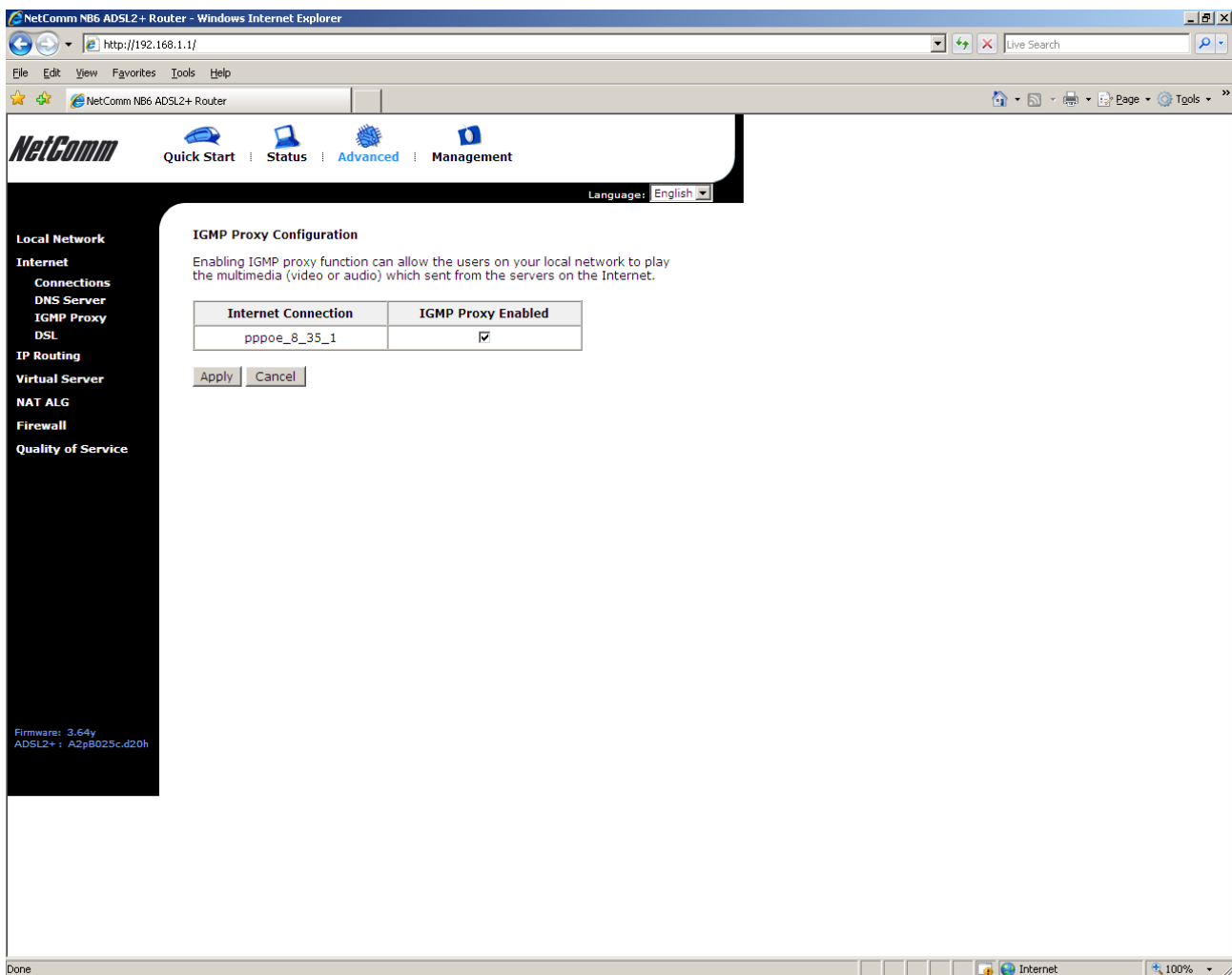
## **IPTV Setup**

(NB6)

## IPTV

This guide will take you through the process of configuring a VLAN on your modem / router to work with IPTV.

1. Navigate to <http://192.168.1.1> in a web browser.
2. Enter admin for both username and password and click Ok.
3. Select Advanced > Internet > IGMP Proxy.



4. Check the IGMP Proxy Enabled and press Apply.

5. Select Advanced > Internet > Connections.

NetComm NB6 ADSL2+ Router - Windows Internet Explorer

http://192.168.1.1/

File Edit View Favorites Tools Help

NetComm NB6 ADSL2+ Router

NetComm

Quick Start | Status | **Advanced** | Management

Language: English

**Local Network**

**Internet**

Connections  
DNS Server  
IGMP Proxy  
DSL

**IP Routing**

**Virtual Server**

**NAT ALG**

**Firewall**

**Quality of Service**

Firmware: 3.64y  
ADSL2+ : A2pB025cd20h

**Internet Connection Configuration**

Choose Add or Edit to configure Internet connection.  
Choose Finish to apply the changes and reboot the system.

PVC Name	VPI/VCI	Category	Protocol	NAT	QoS	WAN IP Address	MTU	Edit
pppoe_8_35_1 Connect	8/35	UBR	PPPoE LLC/SNAP	On	On	Auto assigned	1492	Edit

The Internet connection is NOT active if PVC name is marked with (?). You need to click "Finish" to apply the changes and reboot the system for activating this PVC.

Add Finish

Done Internet 100%

6. Press the Add button.

7. Set VPI to 0 and VCI to 35 with the service category as UBR without PCR.

NetComm NB6 ADSL2+ Router - Windows Internet Explorer

http://192.168.1.1/

File Edit View Favorites Tools Help

NetComm NB6 ADSL2+ Router

NetComm Quick Start Status Advanced Management

Language: English

**Local Network**

**Internet**

Connections

DNS Server

IGMP Proxy

DSL

**IP Routing**

**Virtual Server**

**NAT ALG**

**Firewall**

**Quality of Service**

**Configure Internet Connection -- ATM PVC**

Please enter VPI and VCI numbers for the Internet connection which is provided by your ISP.

VPI:  (0-255)

VCI:  (32-65535)

Service Category:

< Back Next >

Firmware: 3.64y  
ADSL2+ : A2pB025c.d20h

Done

Internet 100%

8. Press the Next button.

9. Select Bridging as the protocol with LLC/SNAP BRIDGING as the encapsulation mode. Leave Quality of Service unchecked.

NetComm NB6 ADSL2+ Router - Windows Internet Explorer

http://192.168.1.1/

File Edit View Favorites Tools Help

NetComm NB6 ADSL2+ Router

Language: English

**Local Network**

**Internet**

Connections

DNS Server

IGMP Proxy

DSL

IP Routing

Virtual Server

NAT ALG

Firewall

Quality of Service

**Configure Internet Connection - Connection Type**

Select the protocol and encapsulation type with the ATM PVC that your ISP has instructed you to use.

Protocol:

- ☐ PPP over ATM (PPPoA)
- ☐ PPP over Ethernet (PPPoE)
- ☐ IP over ATM (IPoA)
- ☒ Bridging

Encapsulation Type: LLC/SNAP

☐ Enable QoS

Enabling IP QoS for a PVC can improve performance for selected classes of applications. Please assign the priorities for various applications from the [Advanced... | Quality of Service](#) menu. Be aware that IP QoS also consumes system resources, the number of created PVCs will be reduced consequently.

< Back Next >

Firmware: 3.64y  
ADSL2+ : A2pB025c.d20h

Done Internet 100%

10. Press the Next button.

11. Leave the WAN IP settings as none unless directed otherwise by your Internet Service Provider.

NetComm NB6 ADSL2+ Router - Windows Internet Explorer

http://192.168.1.1/

File Edit View Favorites Tools Help

NetComm NB6 ADSL2+ Router

Language: English

**Local Network**

**Internet**

Connections

DNS Server

IGMP Proxy

DSL

IP Routing

Virtual Server

NAT ALG

Firewall

Quality of Service

**Configure Internet Connection - WAN IP Settings**

Enter information provided to you by your ISP to configure the WAN IP settings.

☒ None

☐ Obtain an IP address automatically

☐ Use the following IP address:

WAN IP Address:

WAN Subnet Mask:

Default Gateway:

< Back Next >

Firmware: 3.64y  
ADSL2+ : A2p8025c.d20h

Done

Internet

100%

12. Press the Next button.

13. Check the "Enable this Internet Connection" option. You have the option of changing the connection name if you so choose.

NetComm NB6 ADSL2+ Router - Windows Internet Explorer

http://192.168.1.1/

File Edit View Favorites Tools Help

NetComm NB6 ADSL2+ Router

Language: English

**Local Network**

**Internet**

Connections  
DNS Server  
IGMP Proxy  
DSL

**IP Routing**

**Virtual Server**

**NAT ALG**

**Firewall**

**Quality of Service**

**This Internet Connection -- Summary**

Make sure that the settings below match the settings provided by your ISP.

☒ Enable this Internet Connection

Connection Name:

**Internet (WAN) Configuration:**

VPI / VCI	0 / 35
Service Category	UBR
Connection Type	Bridge LLC/SNAP, QoS Off

Click "Apply" to accept these settings.  
Click "Back" to make any modifications.

Firmware: 3.64y  
ADSL2+ : A2pB025c.d20h

Done

Internet 100%

14. Press the Apply button.

- Click Finish on the Internet Connection Configuration page.

The screenshot shows the NetComm NB6 ADSL2+ Router web interface in a Windows Internet Explorer browser window. The address bar shows <http://192.168.1.1/>. The interface has a top navigation bar with links: Quick Start, Status, Advanced, and Management. A language dropdown is set to English. On the left is a sidebar menu with categories: Local Network, Internet, Connections, DNS Server, IGMP Proxy, DSL, IP Routing, Virtual Server, NAT ALG, Firewall, and Quality of Service. The main content area is titled "Internet Connection Configuration" and contains the following text:

Choose Add or Edit to configure Internet connection.  
Choose Finish to apply the changes and reboot the system.

PVC Name	VPI/VCI	Category	Protocol	NAT	QoS	WAN IP Address	MTU	Edit
pppoe_8_35_1 <a href="#">Connect</a>	8/35	UBR	PPPoE LLC/SNAP	On	On	Auto assigned	1492	
br_0_35 (?)	0/35	UBR	Bridge LLC/SNAP	*	Off	*		

The Internet connection is NOT active if PVC name is marked with (?). You need to click "Finish" to apply the changes and reboot the system for activating this PVC.

At the bottom of the configuration area are two buttons: **Add** and **Finish**.

At the bottom left of the sidebar, the firmware version is listed: Firmware: 3.64y, ADSL2+ : A2pB025c.d20h.

A red warning message is displayed at the bottom left:

**WARNING:**  
Router's settings are changed. New settings are only valid after restarting router.

The browser status bar at the bottom shows "Done" and "Internet" with a 100% zoom level.

- The router will now save the configuration settings and reboot to enable the new settings.

17. The NB6 is now configured for IPTV.

