

SMALL-MEDIUM BUSINESS
56K V.92 USB DATA/FAX/VOICE MODEM

AM5055 Roadster V.92 USB



FAST, PROFESSIONAL INTERNET CONNECTION

Quick Start Guide

Contents

Introduction	3
Features of your Roadster V.92 USB modem	3
Step 1: Installing your Modem	4
Speakerphone	4
Step 2: Installing your Drivers	5
Windows XP	5
Windows ME	8
Windows 2000	10
Windows 98 se	15
Step 3: Installing your Software	18
Facsimile and Voice Mail Utility	18
Step 4: Using your Roadster V.92 Modem with FaxTalk	19
Configuring voice/fax mailboxes	19
Password protecting a mailbox	20
Greeting settings	21
Using the Speakerphone feature	23
Troubleshooting	25
Testing Your Modem	25
Updating Your Modem's Firmware	25
AT Commands	26
Frequently Asked V.92 Questions	27
Step 5: Registering your Modem	29
Contact Information	29
Warranty Information	30
Regulatory Information	33
Telecom New Zealand Warnings	33
Trademarks and Notices	35

Introduction

Thank you for purchasing a genuine NetComm product.

Follow the steps in this Quick Start Guide to correctly install your Roadster V.92 USB Modem and begin data, fax and voice communications.

Features of your Roadster V.92 USB modem

Connect to the Internet faster

The Roadster V.92 cuts the time it takes to connect by 40% or more.

Upload faster

The Roadster V.92 can upload at speeds of up to 48,000 bps.

Download faster

The Roadster V.92 uses new V.44 compression, which allows you greater throughput for viewing HTML pages on the Internet.

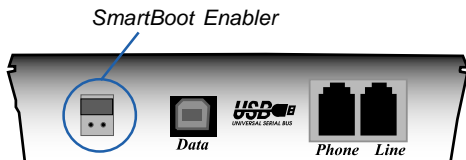
Supporting the following Standards

- 56 Kbps (download)48 Kbps (send)with Auto-negotiation of V .92 and V.90
- Data -V.92,V.90,V.34 , V.32 bis,V.32 , V.22 bis,V.22 A/B,V.22 ,V.23 ,V.21
- Bell 103/212 A
- Error Correction V.42 ,MNP 2-4
- Data Compression V.44 ,V.42 bis,MNP 5
- Fax Send/Receive 14,400 bps (Class 1)
- Video support V.80 for H.324 (videophone) compatibility
- Supports Digital Line Protection, Voice Capable (TAM), Speakerphone, Distinctive Ring (duet) and Caller Id.
- Flash ROM Upgradeable
- Hayes AT and extended AT command set compatibility

Note: To achieve a 56Kbps V.92 connection and utilise the other V.92 features - such as Caller ID, Modem - these features must be enabled on your phone line and your ISP must support and enable the V.92 Standard. If a V.92 connection is not available, this product will revert to a 56K V.90 mode.

Step 1: Installing your Modem

1. Connect the USB port on the back of the modem to a USB port on the computer (or USB hub) using the supplied USB cable.



Rear of Modem

NOTE: Some USB ports such as those on some keyboards are not capable of powering the Roadster V.92 USB.

2. Connect the telephone cord to the line socket on the back of the modem (marked LINE) and the other end to a phone socket.
3. Refer to the appropriate operating system in **Step 2: Installing your Drivers** to continue.

Note: Windows 2000 users will need to change the jumper on the SmartBoot Enabler to the lower pins in order to operate correctly. Refer to the diagram in the Windows 2000 section of Step 2: Installing your Drivers.

Speakerphone

To use the Speakerphone feature of your Roadster V.92 USB modem:

- Use the inbuilt speakerphone functions, such as microphone and speaker, or
- Plug in a headset and boom microphone for easy hands-free communication, or
- Use your computer's external speaker, sound card and sound card cable to enhance video conferencing.

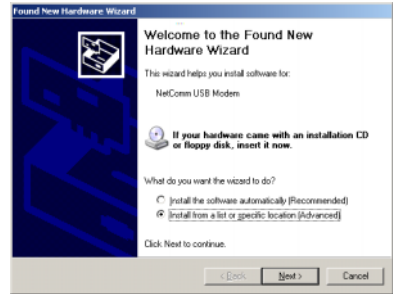


Note: The Headset is available as an optional extra.

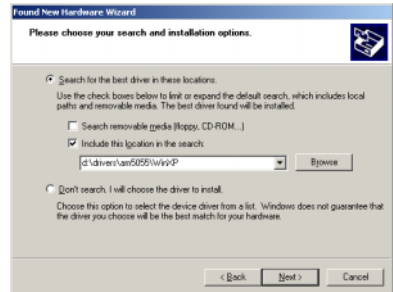
Step 2: Installing your Drivers

Windows XP

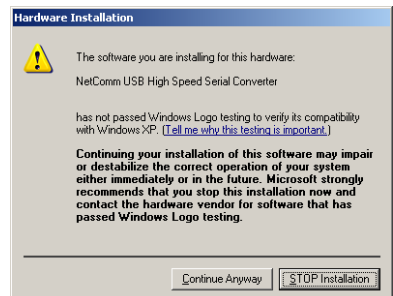
1. Please insert the NetComm CD supplied and, when the "Found New Hardware Wizard" recognizes the new "NetComm USB Modem", select "Install from a list or specific location (Advanced)" and then click "Next>".



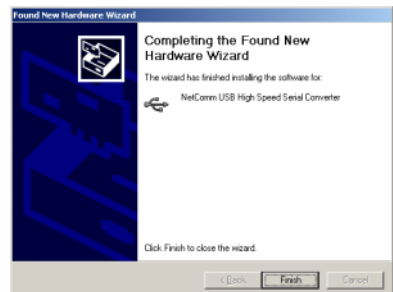
2. Select "Search for the best driver in these locations" and choose "Include this location in the search:". Type in "D:\DRIVERS\AM5055\WINXP" (where d:\ is the letter of your CD ROM drive) and click on "Next>".



3. The Wizard will search for the correct driver. The drivers that Windows XP uses are not digitally signed by Microsoft and the message to the right will be displayed. Click "Continue Anyway".



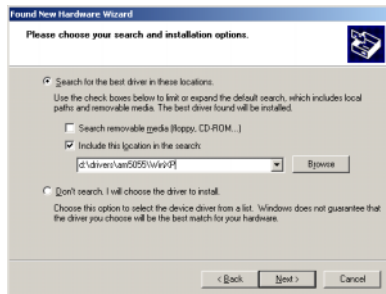
4. Windows XP will now copy the required files (for the USB Serial Converter portion of the modem).
5. Once all files have been copied click "Finish", and the "Found New Hardware Wizard" will be displayed again.



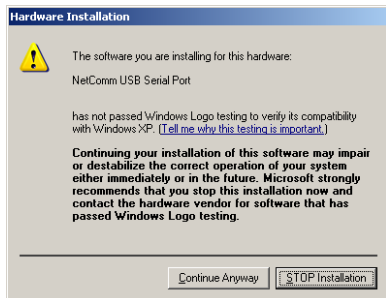
6. Select "Install from a list or specific location (Advanced)" and then click "Next>".



7. Select "Search for the best driver in these locations" and choose "Include this location in the search:". Type in "D:\DRIVERS\AM5055\WINXP" (where d:\ is the letter of your CD ROM drive) and click on "Next>".



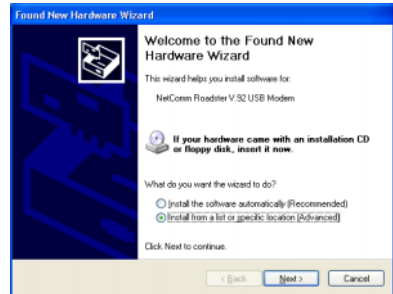
8. The Wizard will search for the correct driver. The drivers that Windows XP uses are not digitally signed by Microsoft and the message to the right will be displayed. Click "Continue Anyway".



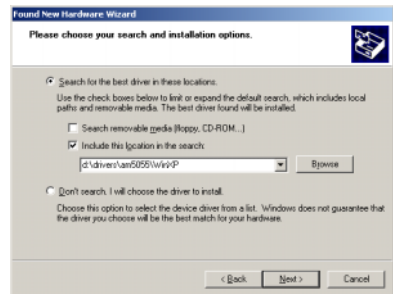
9. Windows XP will now copy the required files (for the USB Serial Port portion of the modem).
10. Once all files have been copied click "Finish", and the "Found New Hardware Wizard" will be displayed again.



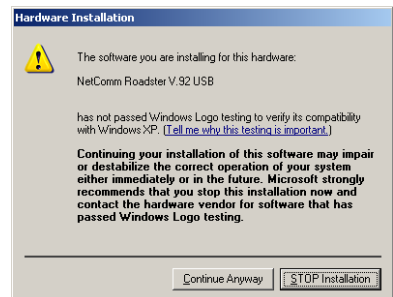
11. Select "Install from a list or specific location (Advanced)" and then click "Next>".



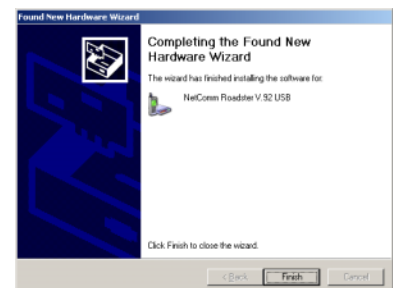
12. Select "Search for the best driver in these locations" and choose "Include this location in the search:". Type in "D:\DRIVERS\AM5055\WINXP" (where d:\ is the letter of your CD ROM drive) and click on "Next>".



13. The Wizard will search for the correct driver. The drivers that Windows XP uses are not digitally signed by Microsoft and the message to the right will be displayed. Click "Continue Anyway".
14. Windows XP will now copy the required files (for the modem).

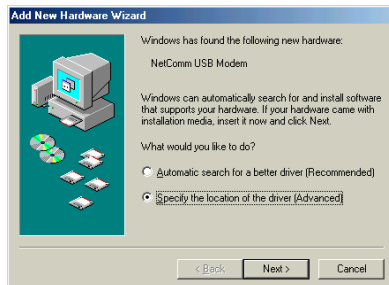


15. Once all files have been copied click "Finish".
16. As Windows System Settings have changed you must restart your computer to complete the modem installation.



Windows ME

1. Please insert the NetComm CD supplied and, when the "Add New Hardware Wizard" recognizes the new "NetComm USB Modem", select "Specify the location of the driver (Advanced)" and then click "Next>".



2. Select "Search for the best driver in these locations" and choose "Specify a location:". Type in "D:\DRIVERS\AM5055\WINME" (where d:\ is the letter of your CD ROM drive) and click on "Next>".



3. Windows will confirm the driver and location. Click on "Next>" to continue.



4. Click on "Finish" to complete installation of the USB Serial Converter portion of the modem.
5. The driver for the NetComm USB Serial port will then be installed without user intervention.



6. When the "Add New Hardware Wizard" finds the "NetComm Roadster V.92 USB Modem" select "Specify the location of the driver (Advanced)" and then click "Next>".



7. Select "Search for the best driver in these locations" and choose "Specify a location:". Type in "D:\DRIVERS\AM5055\WINME" (where d:\ is the letter of your CD ROM drive) and click on "Next>".

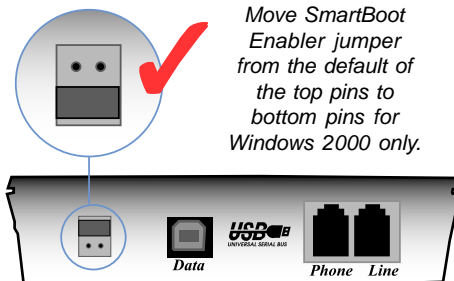


8. Windows will confirm the driver and location. Click on "Next>" to continue and then click on "Finish" to complete installation of the NetComm Roadster V.92 USB.

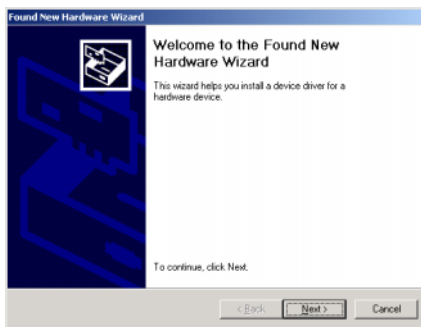


Windows 2000

Note: Windows 2000 users will need to change the jumper on the SmartBoot Enabler to the lower pins in order to operate correctly.



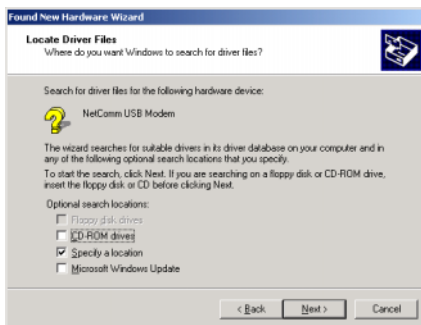
1. Please insert the NetComm CD supplied and, when the "Found New Hardware Wizard" starts. Click on "Next>".



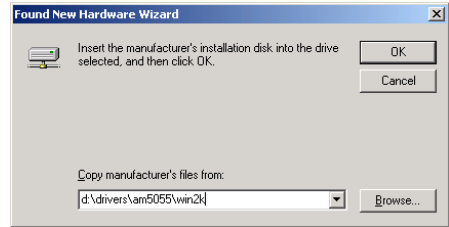
2. Select "Search for a suitable driver for my device (recommended)" and click on "Next>".



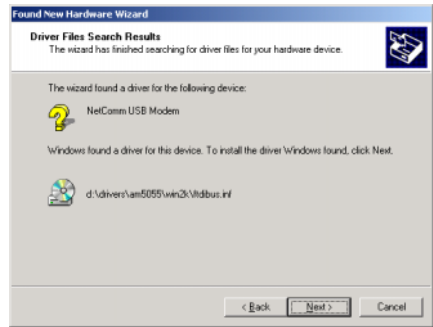
3. Select "Specify a location" and click on "Next>".



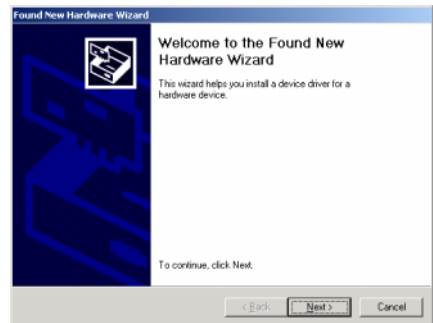
4. Enter the driver location
"D:\DRIVERS\AM5055\WIN2K" (where
D:\ is the drive letter of your CD ROM
drive) and click on "OK".



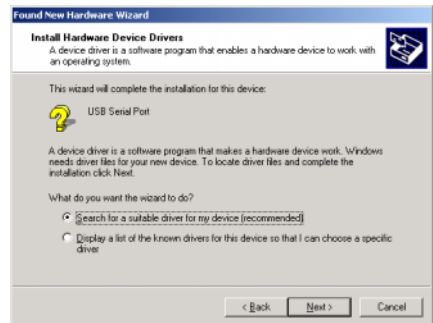
5. Windows will locate the correct driver.
Click on "Next>" to continue.
6. Windows 2000 will now copy the
required files (for the USB Serial converter
portion of the modem).



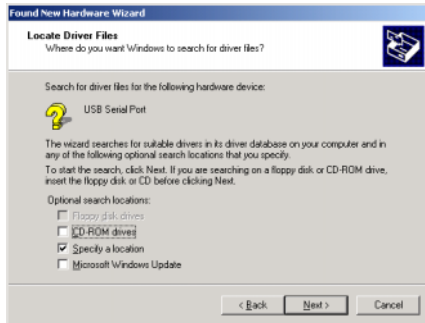
7. Once all files have been copied click
"Finish", and the "Found New Hardware
Wizard" will be displayed again.
8. Click on "Next>".



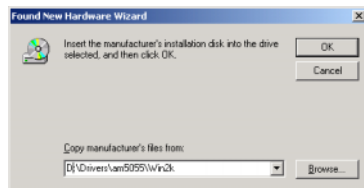
9. Select "Search for a suitable driver for my
device (recommended)" and click on
"Next>".



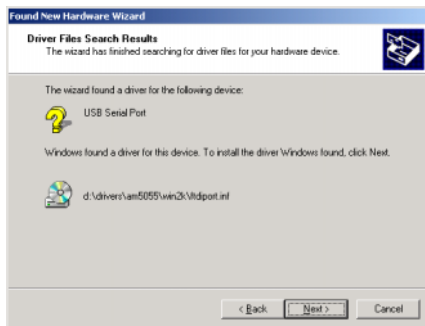
10. Select "Specify a location" and click on Next>".



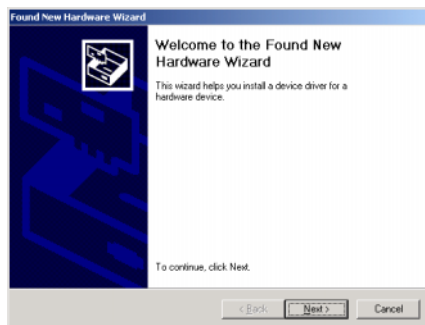
11. Enter the driver location "D:\DRIVERS\AM5055\WIN2K" (where D:\ is the drive letter of your CD ROM drive) and click on "OK".



12. Windows will locate the correct driver. Click on "Next>" to continue.
13. Windows 2000 will now copy the required files (for the USB Serial Port portion of the modem).



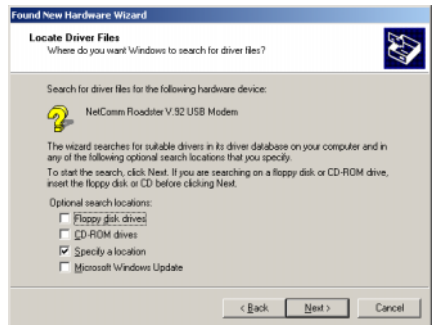
14. Once all files have been copied click "Finish", and the "Found New Hardware Wizard" will be displayed again.
15. Click on "Next>".



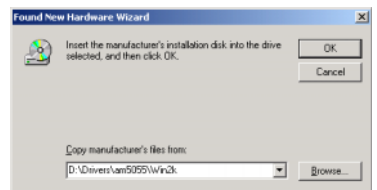
16. Select "Search for a suitable driver for my device (recommended)" and click on "Next>".



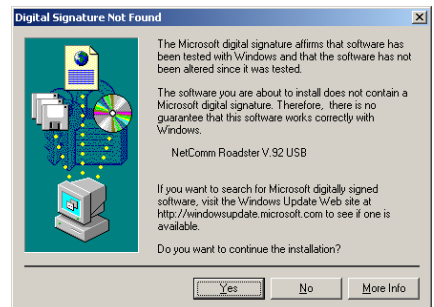
17. Select "Specify a location" and click on "Next>".



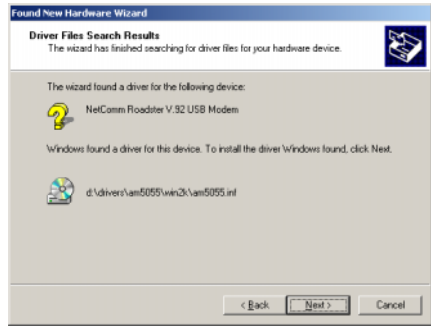
18. Enter the driver location "D:\DRIVERS\AM5055\WIN2K" (where D: is the drive letter of your CD ROM drive) and click on "OK".



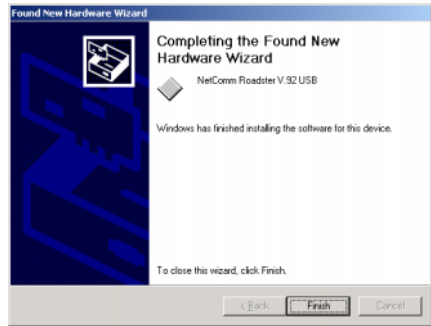
19. The Wizard will search for the correct driver. The drivers that Windows 2000 uses are not digitally signed by Microsoft and the message to the right will be displayed. Click "Yes" to continue.



19. Windows will locate the correct driver.
Click on "Next>" to continue.
20. Windows 2000 will now copy the required files (for the USB Serial Port portion of the modem).

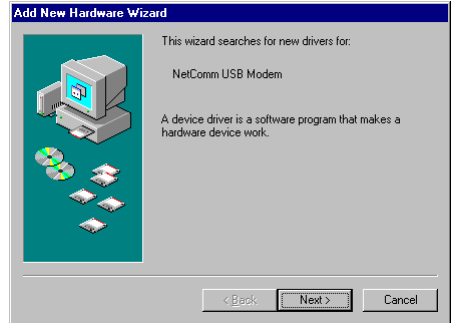


21. Once all files have been copied click "Finish" to complete the installation.



Windows 98 se

1. Please insert the NetComm CD supplied and, when the "Add New Hardware Wizard" recognizes the new "NetComm USB Modem", click on "Next>".



2. Select "Search for the best driver for your device (Recommended)" and click on "Next>".



3. Select "Specify a location:". Type in "D:\DRIVERS\AM5055\WIN98" (where d:\ is the letter of your CD ROM drive) and click on "Next>".



4. Windows will confirm the driver and location. Click on "Next>".
5. The required files will then be copied to your computer.



6. Click on "Finish" to complete installation of the USB Serial Converter portion of the modem.
7. The driver for the NetComm USB Serial port will then be installed without user intervention.



8. When the "Add New Hardware Wizard" finds the "NetComm Roadster V.92 USB Modem" click on "Next>".



9. Select "Search for the best driver for your device (Recommended)" and click on "Next>".



10. Select "Specify a location:". Type in "D:\DRIVERS\AM5055\WIN98" (where d:\ is the letter of your CD ROM drive) and click on "Next>".



11. Windows will confirm the driver and location. Click on "Next>".
12. The required files will then be copied to your computer.



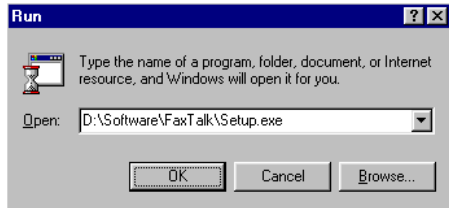
13. Click on "Finish" to complete the installation.
14. Once the modem installation is complete your modem can be selected from within the communications application you are using, such as Dial Up Networking for Internet connection.



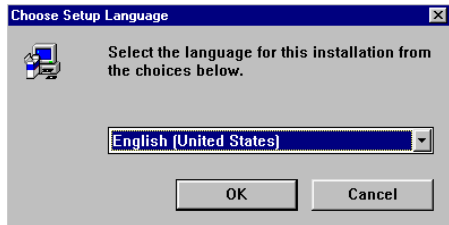
Step 3: Installing your Software

Facsimile and Voice Mail Utility

1. Insert the NetComm CD into your CD-ROM drive. Go to the Start Menu and click on Run.
2. Browse the CD for the location or type in "D:\Software\Faxtalk\setup.exe" where D: is the letter of your CD-ROM drive.



2. Select a language and click "OK" to continue.



3. Follow the instructions on screen to install the FaxTalk Communicator software.
4. You will be prompted to select your Modem.
5. Select the "NetComm Roadster V.92 " from the list and click on "Next".
6. Continue with the installation and restart your computer when prompted.



Step 4: Using your Roadster V.92 Modem with FaxTalk

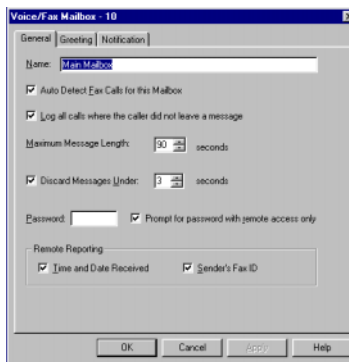
Configuring voice/fax mailboxes

Voice/fax mailboxes are the basic type of mailbox used by FaxTalk Communicator. These mailboxes can receive both voice messages and faxes. You can also configure a Voice/fax mailbox to act as an announce only or fax only mailbox.

To change the settings of a Voice/fax mailbox, select the desired mailbox and click Properties. A Voice/fax mailbox contains three configuration tabs.

General settings

The General tab contains the mailbox settings such as mailbox name, maximum message length, and remote access password.



Voice /Fax Mailbox General Configuration Screen

Setting the maximum message length You can control the length of time a caller has to leave a message. Each mailbox can be set to a specific message length of between 1 and 999 seconds. To change the maximum message length:

1. Click the up or down arrows on the Maximum Message Length setting to change the value. You can also type a new value directly into the field.
2. Click OK to save the change.

Logging incoming calls

You can elect to have all incoming calls logged to a mailbox regardless of whether the caller left a message. If Caller ID information is available, The Caller ID name and number will also be logged with the call.

To log all incoming calls:

1. Check the Log all calls where the caller did not leave a message option.
2. Click OK to save the change.

Automatically detecting fax calls

You can enable a mailbox to automatically detect incoming fax calls while playing the greeting. If a fax call is detected during the greeting and the Auto Detect Fax Calls for this Mailbox option is enabled, the software will automatically begin receiving the fax.

To automatically detect fax calls:

1. Check the Auto Detect Fax Calls for this Mailbox option.
2. Click OK to save the change.

Discarding messages

You can have a mailbox automatically delete received messages that are under certain length. To automatically delete messages under a certain length:

1. Enable the Discard Messages Under X seconds option.
2. Click the up or down arrows on the Discard Messages Under X seconds setting to select the maximum length of messages to delete. A setting of 3 seconds will delete all messages under 3 seconds in length.
3. Click OK to save the change.

Password protecting a mailbox

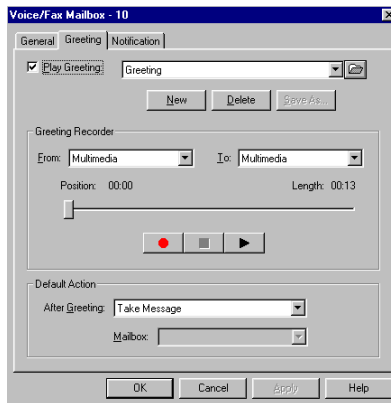
You can password protect individual Voice / Fax mailboxes for privacy. You have the option of requiring a password for local access, local and remote access, or just remote access.

To set a mailbox password:

1. Enter a numeric password in the password field. If you want password protection only when accessing the mailbox remotely, check the Prompt for password with remote access only option.
2. Click OK to save the change.

Greeting settings

The Greeting tab includes options for recording, selecting, saving, and playing greetings.



Greeting Configuration Screen

Recording a greeting

You can record a custom greeting to be played when a caller accesses the mailbox. A Data greeting should inform the caller that this is a data mailbox. Depending on your modem's capabilities, you can record your greeting from the telephone handset, modem microphone, or multimedia microphone.

To record a greeting:

1. Click New to create a new greeting
2. In the Greeting Recorder, select the recording device in the From list that you will be using the record the greeting.
3. Click the Record button to begin recording. Click the Stop button when you are finished.
4. Once you have recorded the greeting, click Save and save the greeting to a file.

Selecting a greeting

To select a greeting for a mailbox, select the desired greeting Greeting list and click OK.

Playing a greeting

To play and review a greeting:

1. Select the desired greeting from the Greeting list.
2. In the Greeting Recorder, select the playback device from 3. Click the Play button to begin playback. If you are playing multimedia device you can use the playback slider to move backward in the greeting.

Deleting a greeting

To delete a greeting:

1. Select the desired greeting from the Greeting list and click button. You will be asked to confirm that you wish to delete selected greeting.
2. Click OK to delete the greeting.

Using the Speakerphone feature

With the FaxTalk Communicator speakerphone you can place and receive voice calls and use your computer and Roadster V.92 modem as a "smart" telephone. FaxTalk Communicator's speakerphone capabilities offer mute, hold with optional music, last 20 number redial, and support for call waiting services. Speakerphone capabilities are a feature of the Roadster V.92 modem. FaxTalk cannot "add" speakerphone capabilities to a modem that does not have hardware support for speakerphone.



FaxTalk Communicator with speakerphone

Receiving calls

To answer an incoming call on FaxTalk Communicator's speakerphone, click Speaker. The speakerphone answers the call and connects you to the calling party. When you're finished with the call, click Hangup.

Placing calls

You can place outgoing calls with FaxTalk Communicator using a variety of methods:

- If the number you wish to call is entered in the phonebook, click the Phonebook tab and either double-click on the entry or highlight the entry and click Dial.
- If you previously added a number to a Speed Dial button, click the Speed Dial tab and click on the appropriate button.
- Click Speaker to take the phone off-hook and enter the numbers individually
- Select a previously dialed number from the Redial list, and click Dial.

Using the phonebook

The Phonebook tab displays all entries in the FaxTalk Phonebook. You can dial a phonebook entry by either double clicking on the entry or highlighting the entry in the Name column and clicking Dial. When a phonebook entry is highlighted, the number to be dialed is displayed in the Redial field.

Using the redial list

FaxTalk Communicator includes a recent dialed numbers list that contains the last 20 numbers dialed. To redial a number in the redial list, select the number from the dropdown list and click Dial.

Placing callers on hold

During a conversation on the speakerphone, you can put callers on hold by clicking Hold. When hold is active, a green light appears on the Hold button. To take a caller off hold, click Hold again. FaxTalk Communicator includes the ability to play .WAV, MIDI, or CD-Audio music to the caller while on hold. This feature requires specific modem support and may not be available. To configure music on hold see Configuring Music on Hold later in this chapter.

Muting a conversion

To mute a call so that the caller cannot hear conversations occurring locally, click Mute. When Mute is active a green light appears on the Mute button. Click on Mute again to resume a normal conversation.

Using the speakerphone with call waiting

If you subscribe to "call waiting" service through your phone company, you can continue receiving calls while talking on the speakerphone. When a new call comes in and your phone company sends a tone to indicate another call, click Flash to put the current call on "standby" and switch to the new call. When finished with the second call, click Flash again to switch back to the original call.

Adjusting the speakerphone volume

The Speaker volume control allows you to adjust the volume of the caller while on the speakerphone. If you want to increase the volume of the caller's voice, slide the volume control to the right. To decrease the caller's volume, slide the volume control to the left.

Adjusting the microphone sensitivity

The Microphone sensitivity control allows you to adjust the sensitivity of the microphone when used with the speakerphone. If you want to increase the sensitivity of the speakerphone microphone, slide the volume control to the right. To decrease the sensitivity of the speakerphone microphone, slide the volume control to the left.

Troubleshooting

Testing Your Modem

Windows XP

1. To test and verify that the modem is working properly, please go to Start / Settings / Control Panel.
2. If "Category view" is selected (by default) select "Switch to Classic View".
3. Double click on the "Phone and Modem options" icon.
4. Select the "Modem" tab and select your new modem. Click on the "Properties" button.
5. Select the "Diagnostics" tab and click on the "Query Modem" button.
6. If your modem is responding to AT commands and functioning correctly, it means that your modem is working properly. Click "OK" to end this procedure. If any error is reported during this procedure please restart your PC and repeat the test procedure.

Windows 98/ME

1. Please go to Start / Settings / Control Panel and double-click on the "Modems" icon.
2. Test the modem by clicking on the "Diagnostics" tab. Then select the COM Port for your new Modem and click on the "More Info..." button to start the test.
3. If your modem is responding to AT commands and functioning correctly, it means that your modem is working properly. Click "OK" to end this procedure. If any error is reported during this procedure please restart your PC and repeat the test procedure.

Windows 2000

1. Please go to Start / Settings / Control Panel and double-click on the "Phone and Modem Options" icon.
2. Click "Modems" tab, select your new modem and click on the "Properties" button.
3. Click "Diagnostics" tab and then click on the "Query Modem" button.
4. If your modem is responding to AT commands and functioning correctly, it means that your modem is working properly. Click "OK". If any error is reported during this procedure please restart your PC and repeat the test procedure.

Updating Your Modem's Firmware

Your NetComm Roadster V.92 modem comes with the latest firmware, however, as new releases become available, you may wish to update to update your firmware.

To update your Modem's Firmware, go to the NetComm web site at www.netcomm.com.au and refer to the support section. Search for your Modem and select the latest firmware version to download.

Follow the instructions included with the file to correctly install your modem's firmware.

AT Commands

Note: *Not all of the commands and registers are accessible to the user. The following are listed for quick reference only. A full copy of the AT command set can be found in Adobe Acrobat format at "D:\Manuals\" where D:\ is the letter of your CD-ROM drive.*

Where the following table shows an n, the n represents a numerical value. For example Mn can represent M1, M2 or M3, etc.

Command	Description
T	Dial using Tone (DTMF) method.
,	(comma) Pauses before continuing the dial string.
A	Enter answer mode, go off hook and attempt to answer call.
D	Enter originate mode, go off hook, and attempt to dial.
En	Character Echo: 0 = Do not echo, 1 = echo characters.
Hn	Hook-state: 0 = Hang up, 1 = Go off hook (loop line)
Ln	Set speaker volume: where n is 0 or 1=low, 2=medium, 3=high
On	Go to on-line state from command state: 0 = no retrain, 1 = retrain.
Vn	Display result codes: 0 = as numbers, 1 = as words
Wn	Negotiation progress messages: 0= None, 1 = Return (display)
X3	Provide basic codes, connection speed and BUSY detection.
X4	Provides basic codes, connection speeds, DIALTONE, and BUSY.
Z	Reset.
&F	Recall factory configuration.
&Kn	Flow control: 3= RTS/CTS, 4=XON/XOFF
\Nn	Error correction mode: 0 = normal (off) speed buffered mode.
%Cn	Data compression: 0 = Disabled.
S0=n	Set auto answer. Range n = 0-255 (Rings)

Frequently Asked V.92 Questions

What is V.92?

V.92 is a new standard for dial-up communications that offers several important improvements over the existing V.90 standard. These improvements are intended to make communications faster, easier and more enjoyable. V.92 and its companion compression standard V.44, have been officially adopted by the ITU, the International Telecommunications Union.

What makes a V.92 modem faster than V.90?

There are three features that allow the V.92 modem to give you faster speeds. The first is the V.92's improved "automatic negotiation" or "handshake" which is the way modems determine compatibility and decide what standards to use to communicate. With a typical V.90 modem this can take as long as 30 seconds. With QuickConnect, the entire process can take as little as half that time. The V.92 Modem also includes V.44, a new international data compression standard. V.44 was designed specifically for the Internet, and can double the effective speed of your Internet page loading. Finally, the V.92 standard increases the upload speed by as much as 30%, from 33,600 bps (the maximum upload speed using V.90) to 48,000 bps.

How does V.44 increase the speed of my web browsing?

V.44 is the latest compression standard approved by the ITU. Compression increases the effective speed of your connection by analysing the data and encoding it so that it can be sent more efficiently. The old standard (V.42bis) was created about 10 years ago, so it wasn't designed with the Internet in mind. V.44 was, and it is therefore much more efficient at compressing WEB pages - up to 100% more efficient in some cases.

Do I need a special service or new ISP?

No. But you may not be able to take advantage of all these features right away. While your current ISP will almost certainly support V.92 and V.44 at some point, it may take a while before the equipment manufacturers that your ISP or online service uses sends them an upgrade, or until they implement the upgrade. However, V.92 and V.44 are true international standards, so over time you can be assured of nearly universal support. In the meantime you can use the V.90 protocol, which is also in your V.92 modem, until your ISP switches over.

Does V.92 "QuickConnect" work on all calls?

This feature of the V.92 standard allows the modem to "learn" and "remember" the variables associated with calling a specific telephone number and connecting to a specific modem associated with that number. This feature will be most effective when you repetitively call the same number - such as that for your on-line service or internet service provider. The modem will then be able to use its stored profile and deliver the advantage of a quicker connection.

Does V.44 work equally well on all file transfers? Which are most improved; least improved?

V.44 compression is optimized for the types of files associated with internet use including WEB pages, graphics and documents such as .PDF files. As with all compression the amount of improved performance varies both with the actual format and with the content of individual pages. For reference, WEB searches show the most visible improvement, especially searches on WEB stores or areas that have high amounts of text and numerous small images. The next most improvement is in standard WEB browsing. Email and downloading of ASCII type text files show noticeable but more modest improvement

Will a V.92 modem work automatically with earlier modems? V.90, K56flex, X2? With 33.6k, 14.4k, 9600 and 2400 modems?

A V.92 modem will automatically negotiate and connect at the best achievable-shared speed down to 2,400 bps. The negotiation and the related connection time may take longer if the connection does need to be negotiated down to a very low speed as the higher speeds are attempted first. However the connection between a 56K V.92 and a 56K V.90 will take approximately the same time as between two current V.90 modems.

How do V.92 modem speeds compare to ISDN, ADSL and Cable speeds?

First, remember that V.92 is asymmetric in nature, the same as ADSL. It offers download speeds from the WEB which are higher than it's upload speeds. This means that it is inherently different from ISDN and has been optimized, like ADSL, for Internet access. In fact it is optimized primarily with V.44 compression rather than with purely higher transmission speed as found in ADSL and Cable. Because of this it is not possible to directly compare the different devices except in terms of the Internet experience itself, including Web browsing. Given optimum V.92/ V.44 performance of approximately 300,000 bps, this still means that that it will operate at less than half the speed of most broadband services (which range from 60,000 bps to 1,500,000 bps).

Step 5: Registering your Modem

To ensure that the conditions of your warranty are complied with, please go to the NetComm web site for quick and easy registration of your product at

www.netcomm.com.au

Alternatively, you can fill in the Warranty Registration Form and mail it to NetComm Limited, PO Box 1200, Lane Cove NSW 2066.

Contact Information

If you have any technical difficulties with your product, please do not hesitate to contact NetComm's Customer Support Department.

Email: support@netcomm.com.au

Fax: (02) 9424-2010

Web: www.netcomm.com.au

Warranty Information

The warranty is granted on the following conditions:

1. This warranty extends to the original purchaser (you) and is not transferable;
2. This warranty shall not apply to software programs, batteries power supplies, cables or other accessories supplied in or with the product;
3. The customer complies with all of the terms of any relevant agreement with NetComm and any other reasonable requirements of NetComm including producing such evidence of purchase as NetComm may require;
4. The cost of transporting product to and from NetComm's nominated premises is your responsibility; and,
5. NetComm does not have any liability or responsibility under this warranty where any cost, loss, injury or damage of any kind, whether direct, indirect, consequential, incidental or otherwise arises out of events beyond NetComm's reasonable control. This includes but is not limited to: acts of God, war, riot, embargoes, acts of civil or military authorities, fire, floods, electricity outages, lightning, power surges, or shortages of materials or labour.
4. Your modem has been used for any other purposes than that for which it is sold, or in any way other than in strict accordance with the user manual supplied;
5. Your modem has been repaired or modified or attempted to be repaired or modified, other than by a qualified person at a service centre authorised by NetComm; and,
6. The serial number has been defaced or altered in any way or if the serial number plate has been removed.

The warranty is automatically voided if:

1. You, or someone else uses the product, or attempts to use it, other than as specified by NetComm;
2. The fault or defect in your product is the result of a voltage surge subjected to the modem either by power supply or communication line, whether caused by thunderstorm activity or any other cause(s);
3. The fault is the result of accidental damage or damage in transit, including but not limited to liquid spillage;

Limitations of Warranty

The Trade Practices Act 1974 and corresponding State and Territory Fair Trading Acts or legalisation of another Government ("the relevant acts") in certain circumstances imply mandatory conditions and warranties which cannot be excluded. This warranty is in addition to and not in replacement for such conditions and warranties. To the extent permitted by the Relevant Acts, in relation to your product and any other materials provided with the product ("the Goods") the liability of NetComm under the Relevant Acts is limited to, at the option of NetComm to:

- Replacement of the Goods; or
- Repair of the Goods; or
- Payment of the cost of replacing the Goods; or
- Payment of the cost of having the Goods repaired.

All NetComm ACN 002 490 486 products have a standard 12 months warranty from date of purchase. However some products have an extended warranty option (refer to packaging). To be eligible for the extended warranty you must supply the requested warranty information to NetComm within 30 days of the original purchase by registering on-line via the NetComm web site at www.netcomm.com.au.

NetComm reserves the right to request proof of purchase upon any warranty claim.



Cut along the line

Warranty Registration Form

Date of Purchase

Name

Company

Address

..... Post Code

Tel No () Fax No ()

E-mail

The following information is vital for your warranty

Please make sure it's correct and complete.

Serial No

Model

Product Type:

☐

PC Card

☐

External

☐

Internal

☐

Other



**Make sure
you fill this
section in!**

I intend to use this modem at:

☐

Home

☐

School/College/University

☐

Business

☐

Government Office

Dealer's Name

Dealer's Address

..... Post Code

Tel No () Fax No ()

How did you find out about our products?

.....
.....

Regulatory Information

Austel Requirements (Australia Only)

The software supplied with this modem has default settings compliant with the requirements of Austel Technical Standard TS-002.

Adjustment of these settings outside the required limits will void the Austel permit associated with the modem.

Dial Retry Attempts

With the service tone detection enabled (eg. Busy Tone) the unit must not be configured to make more than 10 dial attempts to the same telephone number.

With the service tone detection disabled (eg. Busy Tone - ATX0) the unit must not be configured to make more than 3 dial attempts to the same telephone number.

With dial tone detection disabled (eg. ATX0) the unit should be configured to dial not less than two seconds after line seizure and not more than 5 seconds after line seizure.

In all of the above cases no further attempts shall be made to connect to the telephone number, until a further period of at least 30 minutes has elapsed (this does not apply if the redial sequence is manually restarted).

Call Answering

The modem shall answer an incoming call by seizing the line in not less than 2 seconds from the start of the application of ring signal from the PSTN. (eg. ATS0=2 or issue ATA after the 2nd ring.)

Internal Modems Internal modems are designed to operate only within a PC with a screw down lid.

Also, telecommunications network voltages exist on the card inside the PC. Therefore the telecommunications line connection (Telecom cable) must be removed before opening the case of the PC.

NOTE Adjustment of these settings outside the required limits will void the Austel permit associated with the modem.

Connection of a non-approved modem to the telecommunications network is an offence under Section 253 of the Telecommunications Act 1991 and may attract a maximum fine of \$12,000.

Telecom New Zealand Warnings.

The grant of a Telepermit for any item of terminal equipment indicates only that Telecom has accepted that the item complies with minimum conditions for connection to its network. It indicates no endorsement of the product by Telecom, nor does it provide any sort of warranty. Above all, it provides no assurance that any item will work correctly in all respects with another item of Telepermitted equipment of a different make or model, nor does it imply that any product is compatible with all of Telecom's network services.

This equipment is not capable, under all operating conditions, of correct operation at the higher speeds for which it is designed. Telecom will accept no responsibility should difficulties arise in such circumstances.

This equipment shall not be set up to make automatic calls to the Telecom `111` Emergency Service.

This equipment may not provide for the effective hand-over of a call to another device connected to the same line.

IMPORTANT NOTICE

Under power failure conditions, this telephone may not operate. Please ensure that a separate telephone, not dependent on local power, is available for emergency use.

Some parameters required for compliance with Telecom's Telepermit requirements are dependent on the equipment (PC) associated with this device. The associated equipment shall be set to operate within the following limits for compliance with Telecom's Specification:-

- a. There shall be no more than 10 call attempts to the same number within any 30 minute period for any single manual call initiation, and
- b. The equipment shall go on-hook for a period of not less than 30 seconds between the end of one attempt and the beginning of the next attempt. Some parameters required for compliance with Telecom's Telepermit requirements are dependent on the equipment (PC) associated with this device.

In order to operate within the limits for compliance with Telecom's Specifications, the associated equipment shall be set to ensure that automatic calls to different numbers are spaced such that there is no less than 5 seconds between the end of one call attempt and the beginning of another.

Some parameters required for compliance with Telecom's Telepermit requirements are dependent on the equipment (PC) associated with this device. In order to operate within the limits for compliance with Telecom's Specifications, the associated equipment shall be set to ensure that calls are answered between 3 and 30 seconds of receipt of ringing.

All persons using this device for recording telephone conversations shall comply with New Zealand law. This requires that at least one party to the conversation is to be aware that it is being recorded. In addition, the Principles enumerated in the Privacy Act 1993 shall be complied with in respect to the nature of the personal information collected, the purpose for collection, how it is used and what is disclosed to any other party.

Not all telephones will respond to incoming ringing when connected to the extension socket.

Mandatory European Statement

The equipment has been approved in accordance with Council Decision 98/482/EC for Pan-European single terminal connection to the public switched telephone network (PSTN). However, due to differences between the individual PSTN's provided in different countries, the Approval does not, of itself, give an unconditional assurance of successful operation on every PSTN network termination point.

In the event of problems, you should contact your equipment supplier in the first instance.

Network Compatibility Statement

This product is designed to work with, and is compatible with the following networks. It has been tested to and found to conform with the additional requirements contained in EG 201 121.

Germany - ATAAB AN005, AN006, AN007, AN009, AN010, and DE03, DE04, DE05, DE08, DE09, DE12, DE14, DE17

Greece - ATAAB AN005, AN006 and GR01, GR02, GR03, GR04

Portugal - ATAAB AN001, AN005, AN006, AN007, AN011 and P03, P04, P08, P10

Spain - ATAAB AN005, AN007, AN012, and ES01

Switzerland - ATAAB AN002

All other countries - ATAAB AN003, AN004

Specific switch settings or software setup are required for each network, please refer to the relevant sections of the user guide for more details. The hookflash (time break register recall) function is subject to separate national type approval. It has not been tested for conformity to national type regulations, and no guarantee of successful operation of that specific function on specific national networks can be given.

Trademarks and Notices

NetComm™ is a trademark of NetComm Limited.
Windows® is a registered trademark of
Microsoft Corporation. Other brand and
product names are trademarks or registered
trademarks of their respective holders.
Information is subject to change without notice.
All rights reserved.

Please note that the images used in this
document may vary slightly from those of the
actual product. Specifications are accurate at
the time of the preparation of this document but
are subject to change without notice.

AM5055 Roadster V.92 USB

V.92 – QUICK CONNECT, FASTER BROWSING*

- Your NetComm Roadster features the latest V.92 technology.
- QuickConnect cuts the time it takes to connect.
- V.44 compression speeds Web browsing and download speeds.
- UltraFast upload speeds with V.92 – up to 48Kbps
- *Your Internet Service Provider must support the V.92 standard for these features to work. If a V.92 connection is not available, this modem automatically reverts to the 56K V.34 mode.

USB FOR TRUE PLUG & PLAY

USB allows significantly faster communications and easier connectivity – simply plug it in and your computer does the rest! There's no need for that extra power point or cable either – the USB port delivers enough power to run your modem.

DESKTOP FAXING

Send a fax direct from your PC without leaving your desk; file it with your other documents on your network or hard drive.

TELEPHONE ANSWERING MACHINE (TAM)

With the NetComm Roadster you not only get a modem, but an "Out of Office Assistant" as well. TAM lets you set up multiple voicemail boxes, one for each member of the office or family.

FLASH ROM UPGRADEABLE

If the need arises to update your firmware, the NetComm Roadster V.92 can be upgraded directly from our website.

ULTRA CONNECT

Ultra Connect, NetComm's enhanced technology, manages your connection to your ISP and negotiates aggressive transmission speeds for faster connections, downloads and web surfing.

CALLER ID*

NetComm's Roadster V.92 allows the display of caller numbers, giving you the option to filter your calls before answering.

DISTINCTIVE RING SUPPORT* FAXSTREAM DUET™

The Roadster V.92 can automatically distinguish between an incoming fax or voice call on a single telephone line.

*Your telephone service provider must first enable this service.



Australia connects with NetComm

More Australians connect with NetComm than any other brand. For over 20 years, Australians have relied on NetComm to exchange data and to connect to the Internet. Only NetComm develops its products specially for Australian conditions, making NetComm the first choice for quality and reliability.

NetComm is Australia's own data communications and networking solutions provider. For more information on this and other NetComm products, please visit www.netcomm.com.au

3 YEAR WARRANTY*

1 year warranty out of the box. Extra 2 years FREE with online registration at www.netcomm.com.au

*Conditional upon registration online.

NetComm Limited, ABN 85 002 460 486 • PO Box 1200, Lane Cove NSW 2066 Australia.
PHONE (02) 9424 2070 • FAX (02) 9424 2010 • EMAIL sales@netcomm.com.au

Trademarks and registered trademarks are the property of NetComm Limited or their respective owners. Specifications are subject to change without notice. Images shown may vary slightly from actual product.
Product Code: AM5055