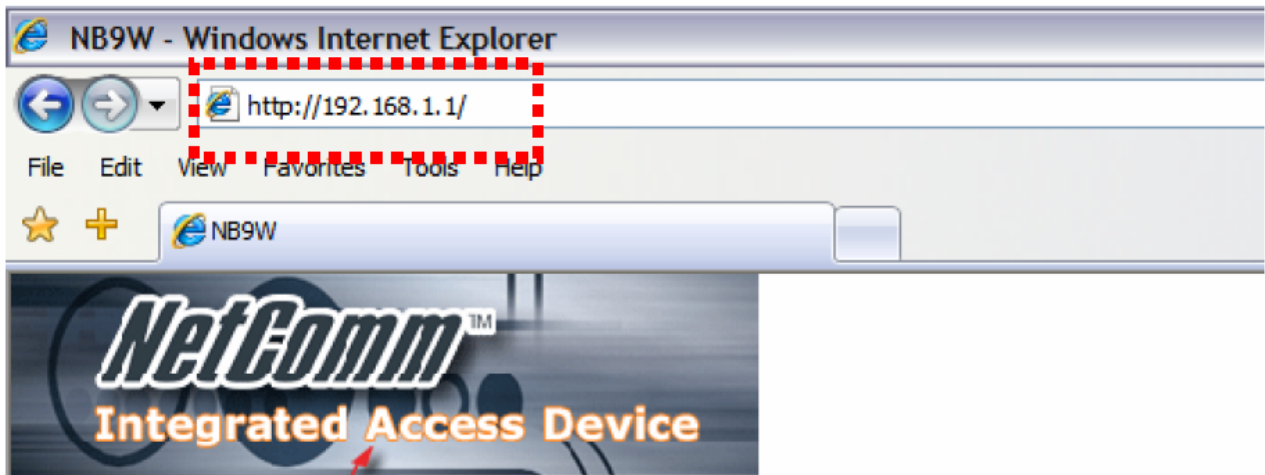


NB9WMAXX ADSL2+ IAD Firmware Upgrade Instructions

Please follow these steps to upgrade your NB9WMAXX firmware:

1. Connect to your NB9WMAXX using an Ethernet cable. It is advised that you do not perform the upgrade wirelessly.
2. Open a web browser (e.g. Internet Explorer) and enter <http://192.168.1.1> into the Address bar:



3. Enter "admin" for both the username and password when prompted.



4. Click Management → Device Settings → Update Firmware:



4. Click Browse and choose the binary file that you downloaded from NetComm's website (e.g. NB9WMAXX-D111-S306NCM-C02_R03.bin) and click Update Software:

Management > Settings > Update Firmware

Step 1: Obtain an updated software image file from your ISP.

Step 2: Enter the path to the image file location in the box below or click the "Browse" button to locate the image file.

Step 3: Click the "Update Software" button once to upload the new image file.

NOTE: The update process takes about 2 minutes to complete, and your DSL Router will reboot.

Software File Name:

5. Wait for approximately 3 minutes for your NB9WMAXX to complete the upgrade.
NOTE: DO NOT DISCONNECT YOUR PC FROM THE MODEM or POWER THE NB9WMAXX OFF!
6. Reset your NB9WMAXX to its factory default settings.
7. Login and configure the settings again.
8. Done!