

NB620W Port Forwarding Guide

In the example below, we are setting up a Web server servicing on port 80.

1.

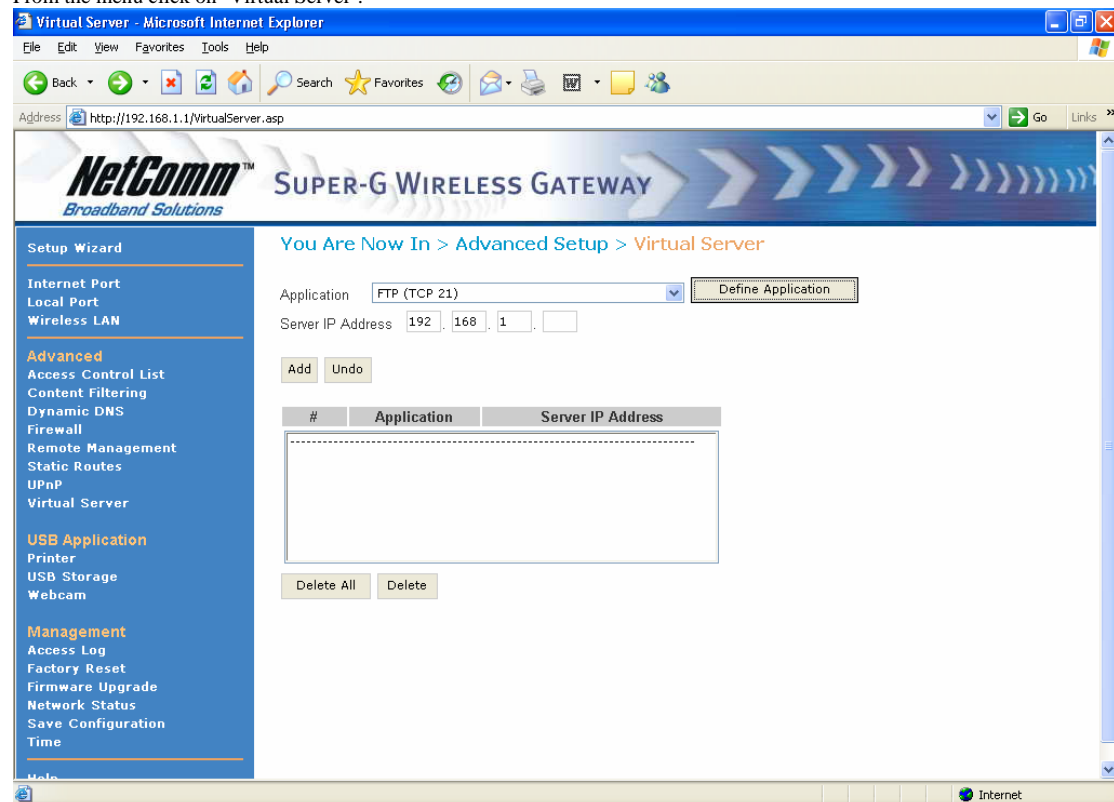
Log into Configuration page of NB620W by putting in <http://192.168.1.1> in the address bar.

Username: admin

Password: admin

2.

From the menu click on 'Virtual Server'.



3.

Click on 'Define Application'



4.

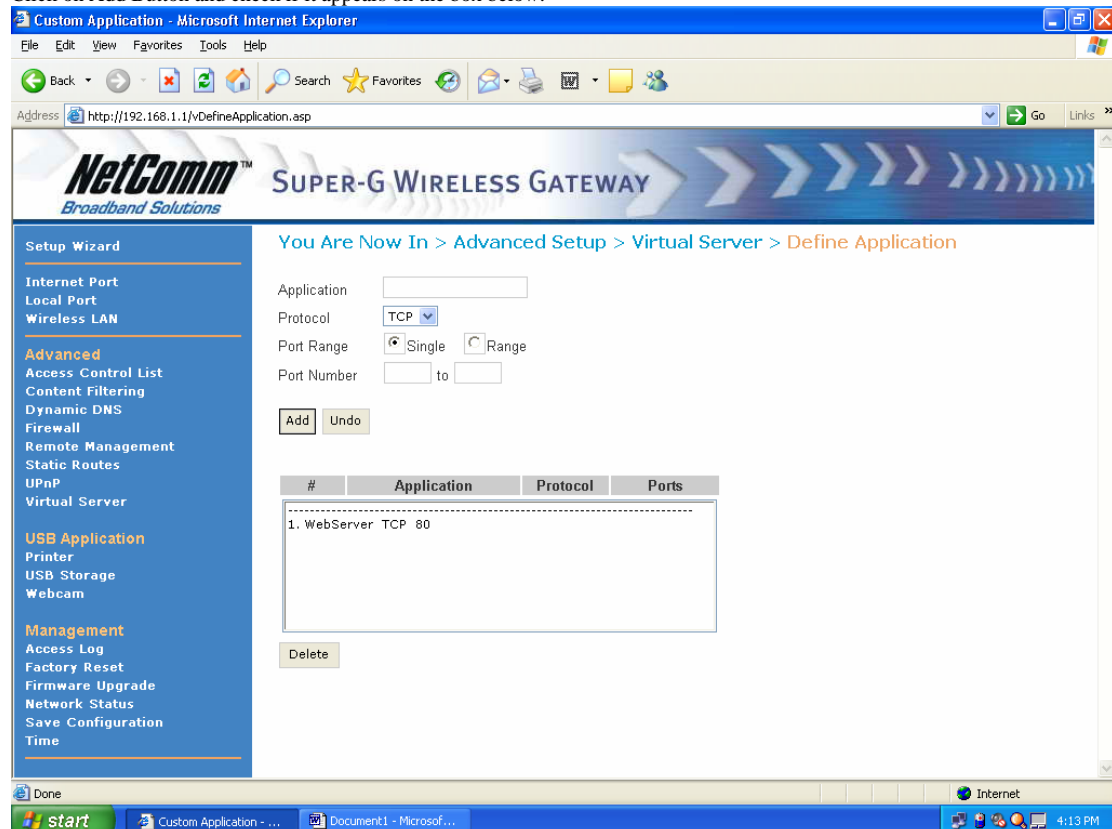
Application: WebServer

Protocol: TCP

Port Range: Single

Port Number from 80 to __

Click on Add Button and check if it appears on the box below.

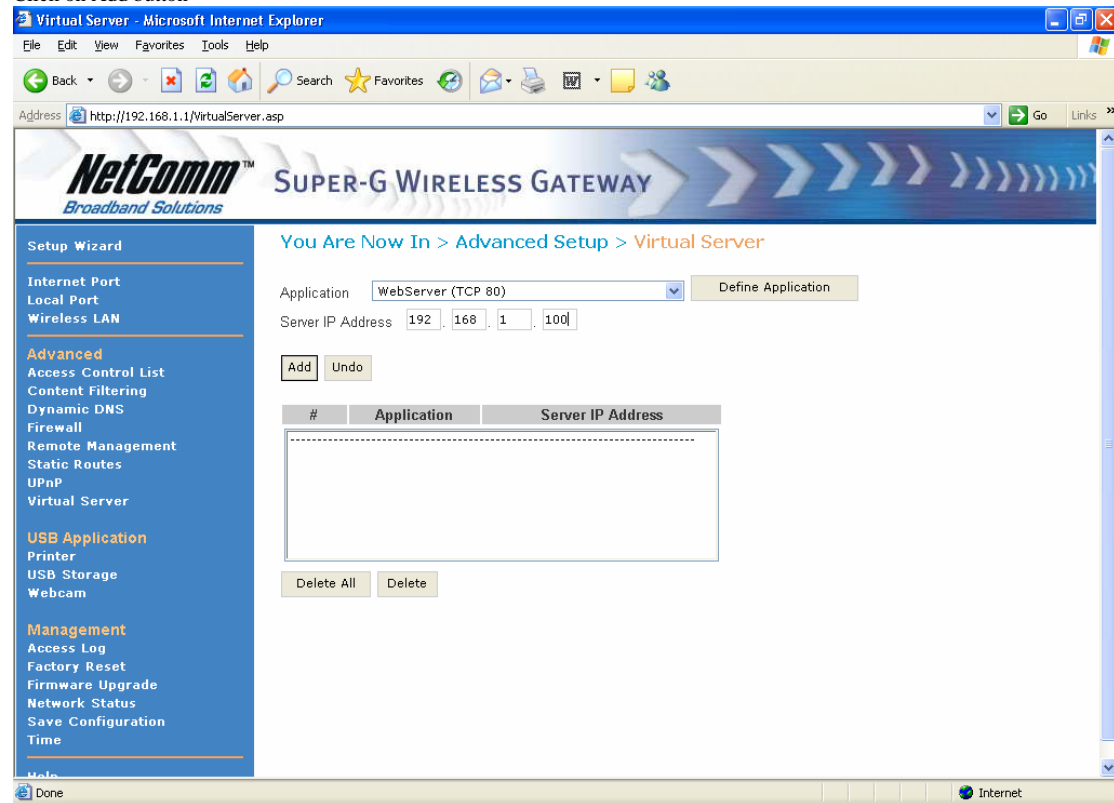


4. Go back the Virtual Server

From the pull down menu of Application, select 'WebServer'.

Put in the private IP address of the PC which is running web server.

Click on Add button



5. If the WebServer is added on the listing box below, click on the 'Save Configuration' link from the menu.