

## How to upgrade your NetComm NB5 ADSL2+ Modem

From version 38.51.x or 62.51.1 to 62.51.2-002 (current)

---

### IMPORTANT:

1. This upgrade utility works on Windows XP or Windows 2000 machines only. Contact NetComm if you do not have this Operating System to upgrade your NB5 modem.
2. Make sure that your NB5 modem has a “2+” sticker on the base of the modem. If it doesn't, contact NetComm.

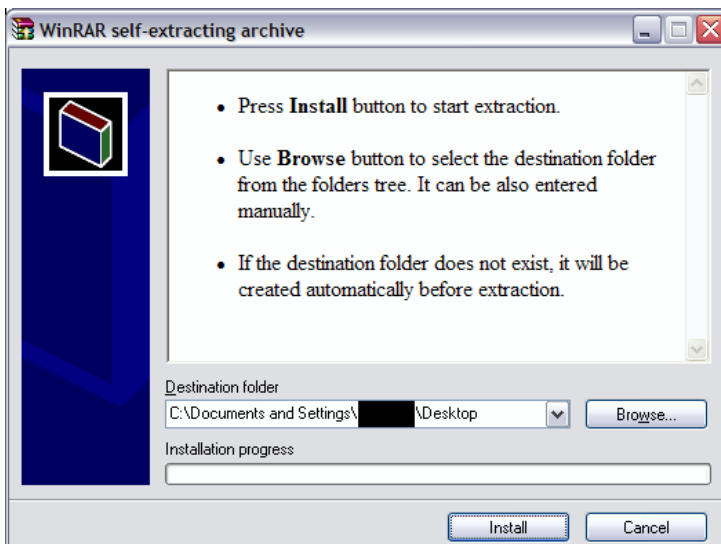
### Part 1 – Upgrading the firmware

#### Before you begin:

- Make a note of your ADSL PPPoE username and ADSL password. If you don't know these, your ISP will be able to provide them to you.
- Turn off any third party firewall software you may have running on your PC.
- Turn off any third party anti-virus software as this can interfere with the upgrade process. Ensure that you turn it back on once the upgrade has completed.
- Ensure that the computer you are using to upgrade is connected directly to the modem (do not connect to the modem through a switch / hub). You can **ONLY** use the Ethernet port to perform the upgrade, NOT USB.

#### Instructions:

1. Double-click on the file “NB5 ADSL2+ Upgrade Firmware 62-51-2-002.exe” and click “Install”:



2. Once it has extracted, the files will be extracted into a new folder with the same name, and in the same location as the .exe file. The dialogue box will now dissapear

3. Power on the NB5 modem. RESET THE MODEM TO FACTORY DEFAULTS – use a paperclip or pin to depress the Reset button on the rear of your NB5 for 10 seconds.
4. Set the IP address on your PC to the following details:

IP Address:	192.168.1.2
Mask:	255.255.255.0
Default Gateway:	192.168.1.1
DNS Server:	192.168.1.1

*NOTE: If you do not know how to set the IP address on your PC, please refer to “Appendix A – Changing the IP address details of your Network Interface Card” on page 5 of this document.*

**Never power off your NB5 or disconnect the Ethernet cable while the NB5 is being upgraded!**

5. Double-click the file “UpgradeGUI.exe” in the extracted folder to start the upgrade.
- The upgrade will take approximately 5 minutes to complete. You will see a notification informing you that the upgrade is a success.
  - If the message fails to appear after 7 minutes, unplug your NB5 and wait 10 seconds. Power it back on again. Try to access the web interface using a web browser – <http://192.168.1.1>. If you are not able to open this web page, contact NetComm.

## Part 2 – Configuring the NB5 with your ADSL Username and ADSL Password

Now that the firmware of your NB5 has been successfully upgraded, you need to configure it with your ADSL username and ADSL password that you recorded in Part 1. You will use NetComm's EasyConfig Tool to configure your NB5. Make sure your NB5 modem is connected to your PC.

Instructions:

1. Open the file "EasyConfig.exe" which is located in the extracted folder:

NetComm EasyConfig NB5 ADSL2+ Version 1.0.4

**NetComm EasyConfig**

Enter your ISP login account details

ADSL Username

ADSL Password

Confirm Password

save

modem speed cnn dsl ppp net  
Detecting... 0/0

Detecting modem...

exit

2. Enter your ADSL Username and ADSL Password and click the "Save" button.

3. Once your modem has successfully registered with your ISP you will see the following:

NetComm EasyConfig NB5 ADSL2+ Version 1.0.7.24 beta

## NetComm EasyConfig

**You are successfully connected to the internet**

Enter your ISP login account details

ADSL Username  
netcommtest@testisp.com.au

ADSL Password

Confirm Password (must match ADSL Password)

As you are successfully connected to the internet, there is no need to re-enter these details unless you wish to change your login account.

save

NB5 ADSL2+	modem	speed	eth	dsl	ppp	net
	192.168.1.1	1536/64	●	●	●	●

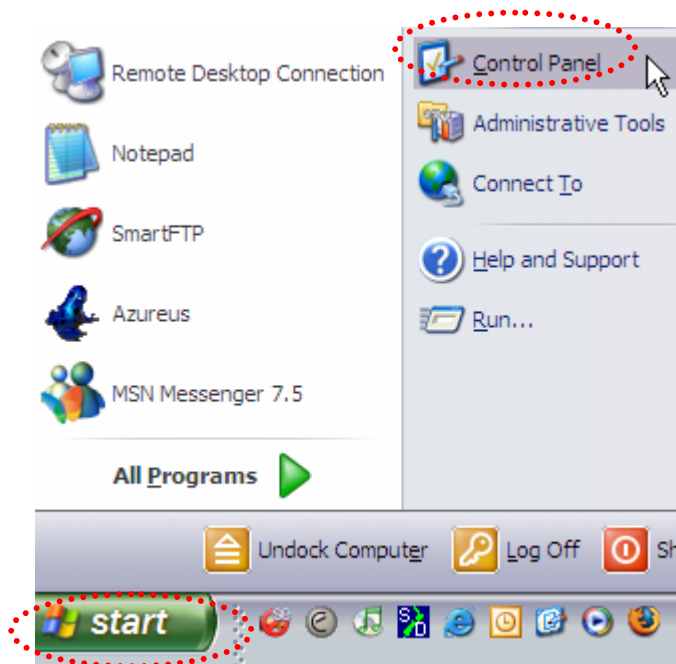
exit

You are successfully connected to the internet

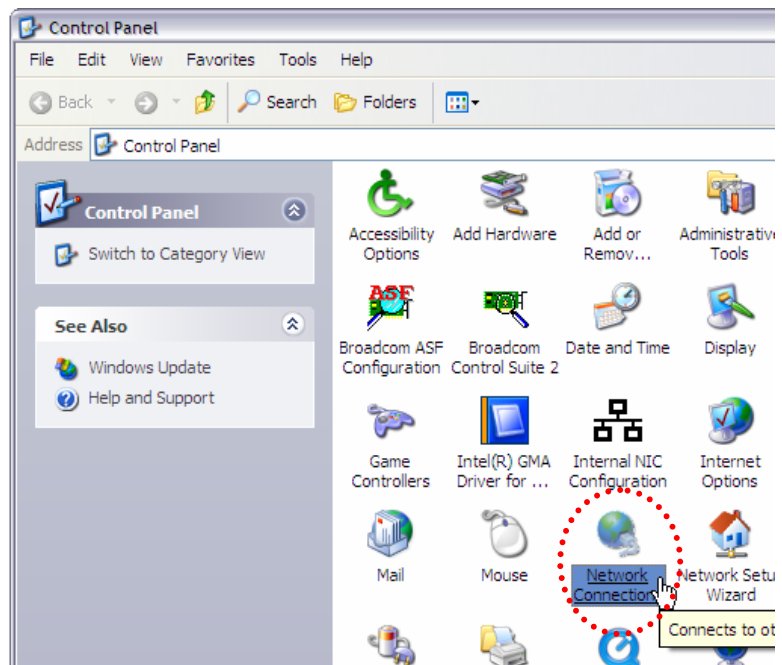
## Appendix A – Changing the IP address details of your Network Interface Card

Windows XP Professional

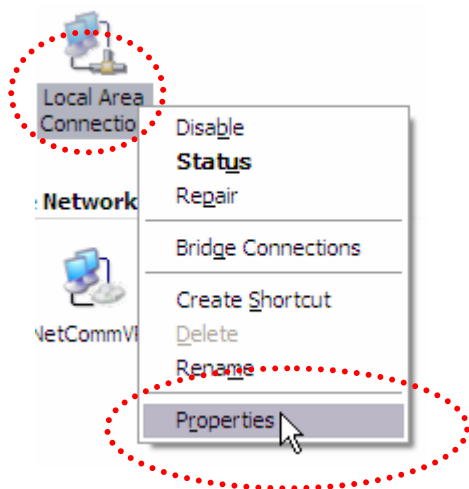
1. Click Start → Control Panel:



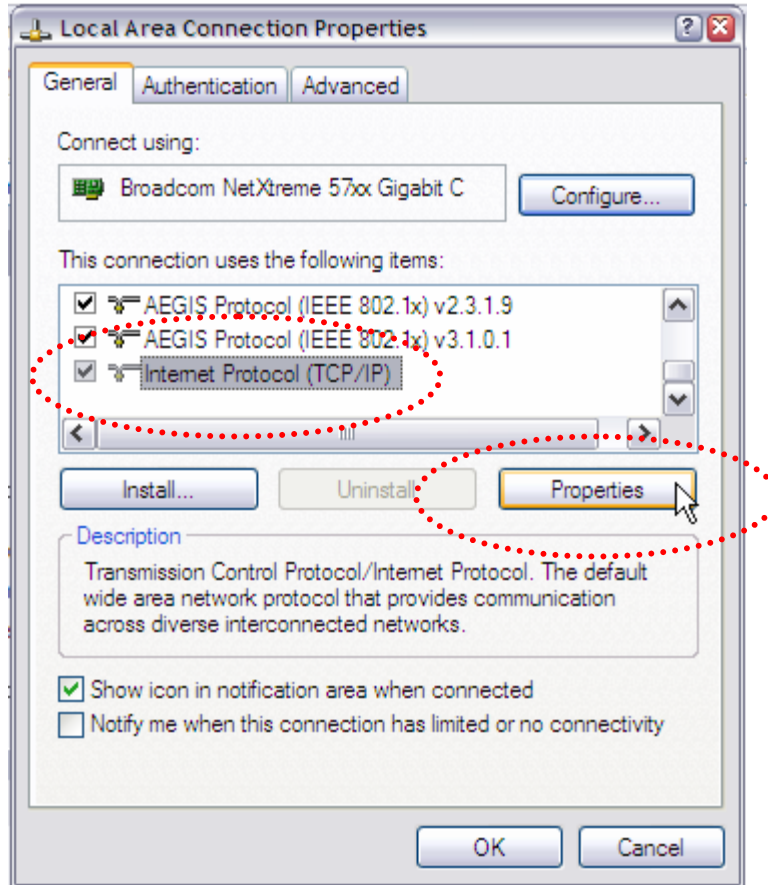
2. Double-click on "Network Connections":



3. Right-click on "Local Area Connection" and select "Properties":

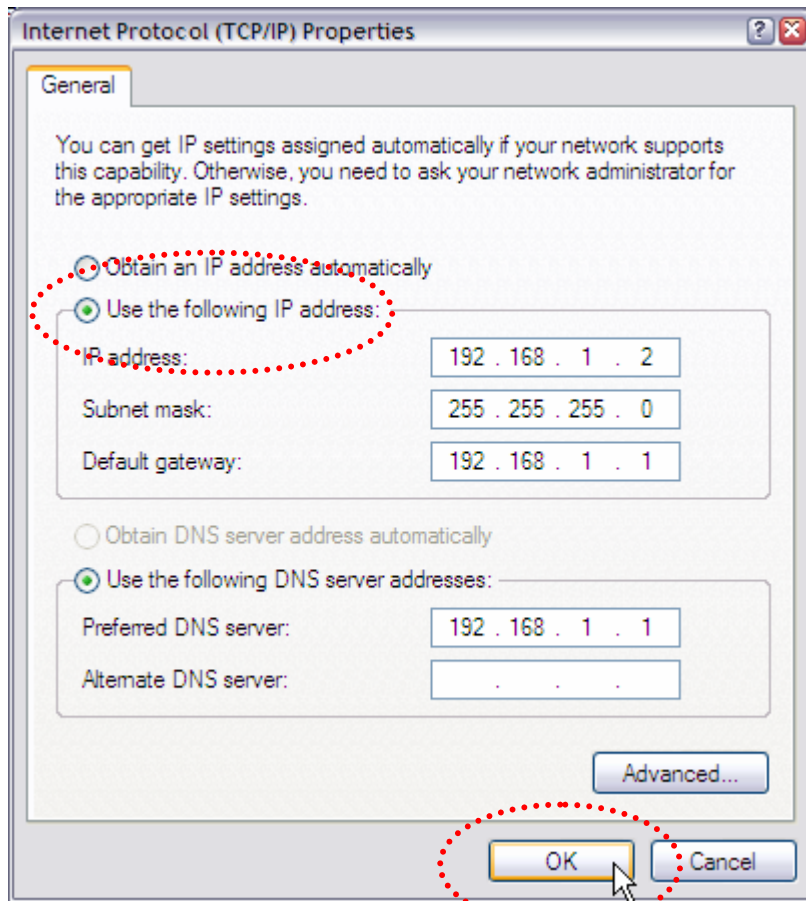


4. Select "Internet Protocol (TCP/IP)" and click "Properties":





5. Click the radio button to “Use the following IP address” and enter the details as pictured in the screenshot below and click “OK”:





Changing your PC back to a DHCP client once you have completed the upgrade

1. Follow steps 1 to 4 above. In step 5 click the radio button "Obtain an IP address automatically" and click "OK":

