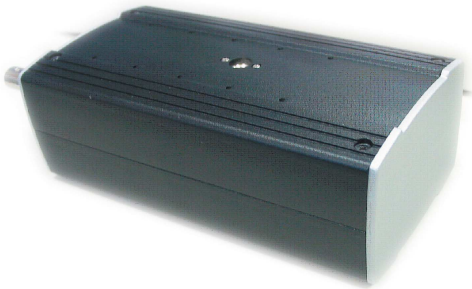


SHARE THE EXPERIENCE



## SECURITY CAMERA SERVERS

Start reaping the benefits of the digital world with a NetComm Security Camera Server!

A NetComm Security Camera Server is an advanced digital surveillance device that converts standard analogue Closed Circuit TV (CCTV) camera images to digital for viewing over a LAN, Intranet or the Internet. This enables users to view live images from a Web browser on any networked computer, anywhere and at any time.

NetComm Security Camera Servers have a built-in web and FTP server and are easily configured using the Web-based interface. They also feature an image compression chipset (capable of delivering standard JPEG, MJPEG, and real-time video) to distribute monitored images on to the network.

Going digital means better images quality and storage capability i.e. on a hard disk at any location. There is no need to buy video tapes, change video tapes or service the video recorder.

Models currently available include NSCS01 and NSCS 04 (capable of connecting 1 analogue video source) and (capable of connecting 4 analogue video sources).

### Access Real-time Video Remotely

NetComm Security Camera Servers enable remote viewing of video in real-time on a local area network or the Internet. These images can be accessed anywhere and at anytime, eliminating the need for dedicated security monitors at a central office. Images from an alarm event could be easily and quickly distributed via computer networks to many people in different locations.

### Integrates Easily with Existing Network Infrastructure

NetComm Security Camera Servers utilise existing analogue surveillance systems and network IP infrastructure. This means reduced installation and migration costs - all the equipment you need is already there.

### Simple to Install and Use

Using the web-based interface, NetComm Security Camera Servers are easy to install and use. Simply plug an analogue camera into the server and images can be transmitted via a LAN, ADSL modem, wireless network adapter or mobile phone. All that is needed on the receiving end is a networked computer with a Web browser.



## FEATURES

- › High quality, Motion JPEG video at up to 25 frames per second
- › 3-layer user Security Control to prevent unauthorized access
- › Built-in Motion Detection with Date/Time stamp and GPIO Input for event triggers.
- › 4 configurable alarm inputs and 1 relay output for external devices
- › Programmable event script for various applications such as motion detection and alert notification
- › Provides multiple event trigger notification via e-mail, TCP and HTTP, and video uploading via e-mail, FTP and HTTP
- › Supports dynamic DDNS to easily locate the camera on the network
- › Active-X control for Internet Explorer™ providing maximum performance
- › Max resolution of up to 704 x 576
- › Remotely upgrade firmware and user content pages via FTP

## TECHNICAL SPECIFICATIONS

- › Video Input: 1.0V(P-P), Composite, BNC, Auto detection NTSC/PAL  
NSCS04 4 Channels;  
NSCS01 1 Channels
- › Hardware: 32 Bits RISC Processor  
2M Bytes Flash ROM; 16M Bytes SDRAM  
One RS-485 COM port; One RJ-45 for Ethernet  
Two LED's (network and power/ system status)  
RS-485 GPIO - four alarm inputs and one relay output
- › Network Interface: Ethernet (10 Base-T)
- › Image Compression: JPEG; Motion JPEG;
- › Video Adjustment: Brightness, Contrast, Hue, Saturation, Quality Level for individual video channel
- › Protocols: TCP/UDP/IP, ARP, ICMP, HTTP, FTP, Telnet, SMTP, DHCP, PPP
- › Security: Three-layer Password Protection
- › Max. Resolution: NTSC: 704x480(Single), 352x240(Quad)  
PAL: 704x576(Single), 352x288(Quad)
- › Performance: Video throughput: Up to 25 frames/second  
Network throughput: Max. Up to 800K bytes/second
- › Event Trigger & Action: Programmable Event Script with Wizard supported.
- › Trigger: Includes Time (Frequency)/GPIO Input/Motion Detection/Video/Network Connection/CGI.
- › Action: Store image to internal buffer; FTP image to remote site; E-mail image to specified account; HTTP server push to remote site; relay output to control external devices; etc.
- › Installation: Assign IP address using ARP, Admin Web Page or IP Installer
- › Software Upgrade: Local or Remote software upgradable using FTP; Custom web contents updated via FTP & Telnet
- › System Requirements: Standard browser such as Microsoft IE4.x or 5.x or above, and Netscape Navigator 4.x running on Win95/98/NT, Linux, etc.
- › Operating Temp: 5 ~ 50 degrees Celsius
- › Operating Humidity: 20 ~ 80 %
- › Input Voltage: AC9V, 1A or DC 10 ~ 24V, 1A
- › Power Consumption: <10 watts
- › Dimension : 77 (W) X 54(H) X 194 (L) mm
- › Weight: 1.1kg, excluding power supply

## 3 YEAR WARRANTY\*

1 year warranty out of the box. Extra 2 years FREE with online registration at [www.netcomm.com.au](http://www.netcomm.com.au)  
\*Conditional on registration online.

NetComm is Australia's dynamic data communications and networking solutions provider. For more information on this and other NetComm products, please visit [www.netcomm.com.au](http://www.netcomm.com.au)

NetComm Limited ABN 85 002 490 486  
PO Box 1200, Lane Cove NSW 2066 Australia.  
Phone (02) 9424 2070 • Fax (02) 9424 2010  
[www.netcomm.com.au](http://www.netcomm.com.au) • Email [sales@netcomm.com.au](mailto:sales@netcomm.com.au)



Trademarks and registered trademarks are the property of NetComm Limited or their respective owners. Specifications are subject to change without notice. Images shown may vary slightly from the product.

Your NetComm dealer: