

3G18WN Firmware Upgrade Instructions

Purpose: This document describes the steps necessary to perform a firmware upgrade on the 3G18Wn with the latest firmware (available on the NetComm website).
To ensure a successful firmware upgrade please follow the below instructions.

Firmware files location:

To download the latest firmware of 3G18Wn, please click on the below link:

<http://www.netcomm.com.au/sm/firmware/3g18wn>

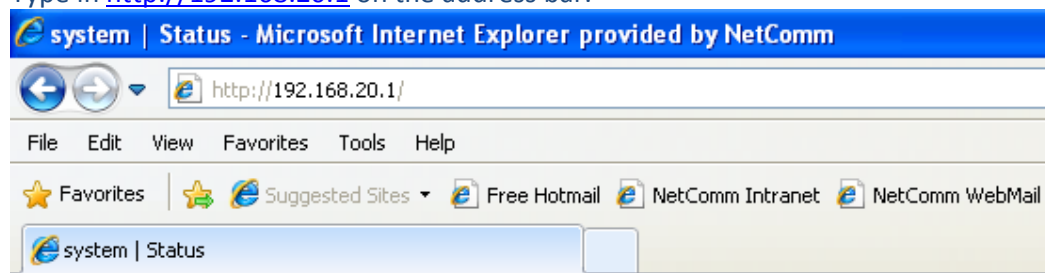
Click on to the firmware file (example ntc3G18Wn_1.0.x.x.dat) and save it on your local PC.

Warning:

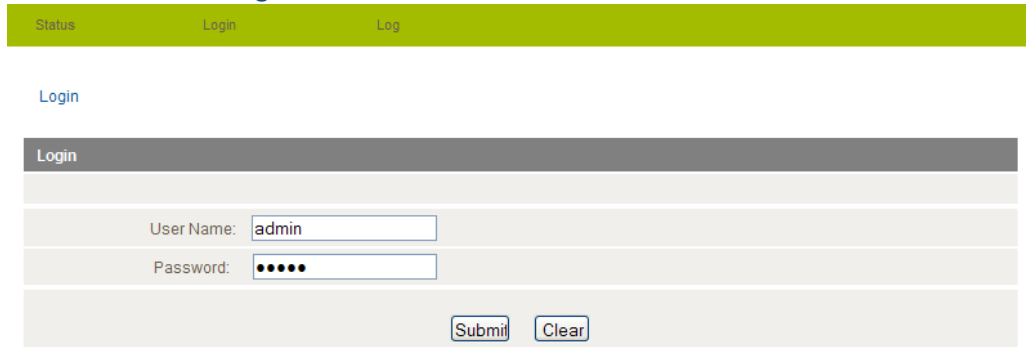
Please ensure that your 3G USB Modem is not attached to 3G18Wn during the upgrade process as this may damage the 3G18Wn and void your warranty.

Upgrade Steps:

- 1) Power on the 3G18Wn with the supplied power adapter.
- 2) Wait approximately 2 minutes for the device to finish starting up.
- 3) Plug in one end of the supplied Yellow Ethernet cable to one of the four yellow LAN port on the 3G18Wn.
- 4) Plug the other end of the Ethernet cable to the LAN port of your computer.
- 5) Please wait approximately 20 seconds.
- 6) Open your web browser.
- 7) Type in <http://192.168.20.1> on the address bar.



- 8) From the Login page, type in:
Username: admin
Password: admin
Press **“Submit”** to log in.



Status Login Log

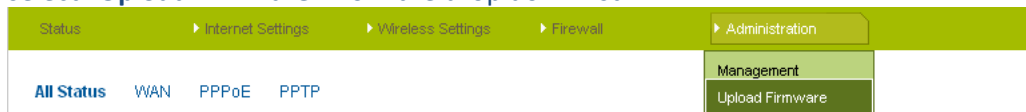
Login

User Name: admin

Password: •••••

Submit Clear

- 9) Once you have logged in, mouseover **“Administration”** from the top menu and select **“Upload firmware”** from the drop down list.

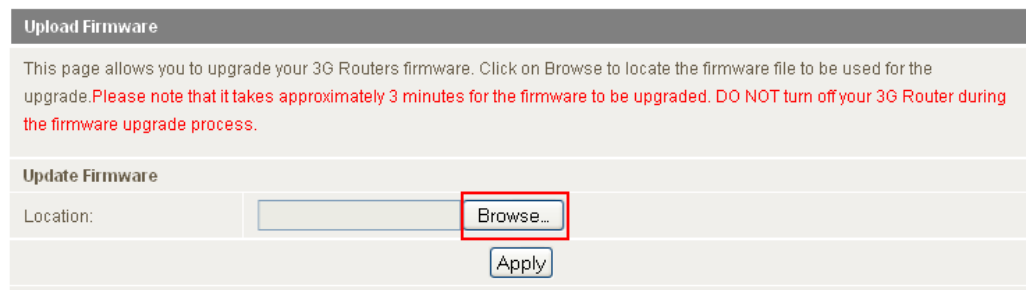


Status Internet Settings Wireless Settings Firewall Administration

All Status WAN PPPoE PPTP

Management Upload Firmware

- 10) Press the Browse button to select a firmware file to upgrade with.
Administration > Upload Firmware



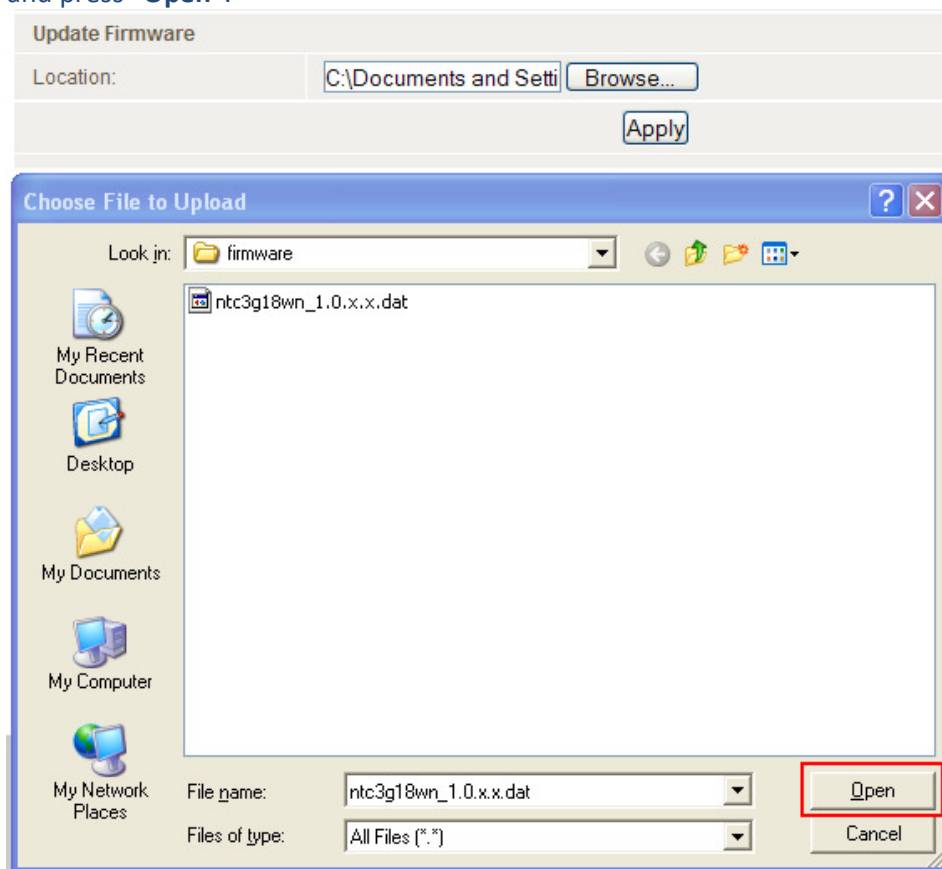
Upload Firmware

This page allows you to upgrade your 3G Routers firmware. Click on Browse to locate the firmware file to be used for the upgrade. **Please note that it takes approximately 3 minutes for the firmware to be upgraded. DO NOT turn off your 3G Router during the firmware upgrade process.**

Update Firmware

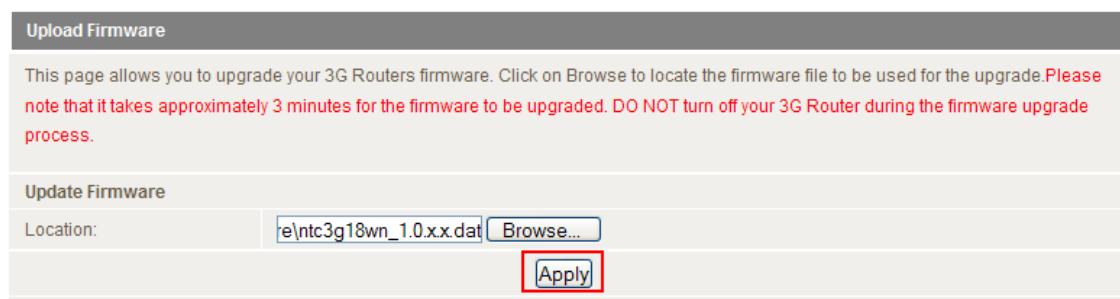
Location: Browse... Apply

- 11) Locate and Select the latest firmware file downloaded from our NetComm website and press “Open”.



- 12) Next, press “Apply” to start the firmware upgrade.

Administration > Upload Firmware



- 13) Please note that it takes approximately 3 minutes for the 3G18Wn to upgrade. DO NOT turn off your 3G18Wn during the firmware upgrade process. Press “OK” to proceed.

Administration > Upload Firmware

Upload Firmware

This page allows you to upgrade your 3G Routers firmware. Click on Browse to locate the firmware file to be used for the upgrade. **Please note that it takes approximately 3 minutes for the firmware to be upgraded. DO NOT turn off your 3G Router during the firmware upgrade process.**

Update Firmware

Location:

e\ntc3g18wn_1.0.xx.dat

Browse...

Apply

Message from webpage

The router will download and upgrade the firmware. The whole upgrade procedure can take 3 minutes. The router shows the status page when the upgrade procedure finishes. Click OK to process

OK

Cancel

- 14) Once the firmware upgrade has been completed, the 3G18Wn will automatically show the System status page.

All Status WAN PPPoE PPTP

System Info	
Firmware Version	1.0.18.0 (Feb 4 2010)
System Up Time	00 : 02 : 49
Operation Mode	Gateway Mode
Local Network	
Local IP Address	192.168.20.1
Local Netmask	255.255.255.0
MAC Address	00:60:64:2C:51:CE
WWAN (WAN/3G)	

- 15) To ensure the firmware upgrade has been successful, please check the firmware version on the system status page as shown below.

All Status WAN PPPoE PPTP

System Info	
Firmware Version	1.0.18.0 (Feb 4 2010)
System Up Time	00 : 02 : 49
Operation Mode	Gateway Mode
Local Network	
Local IP Address	192.168.20.1
Local Netmask	255.255.255.0
MAC Address	00:60:64:2C:51:CE
WWAN (WAN/3G)	