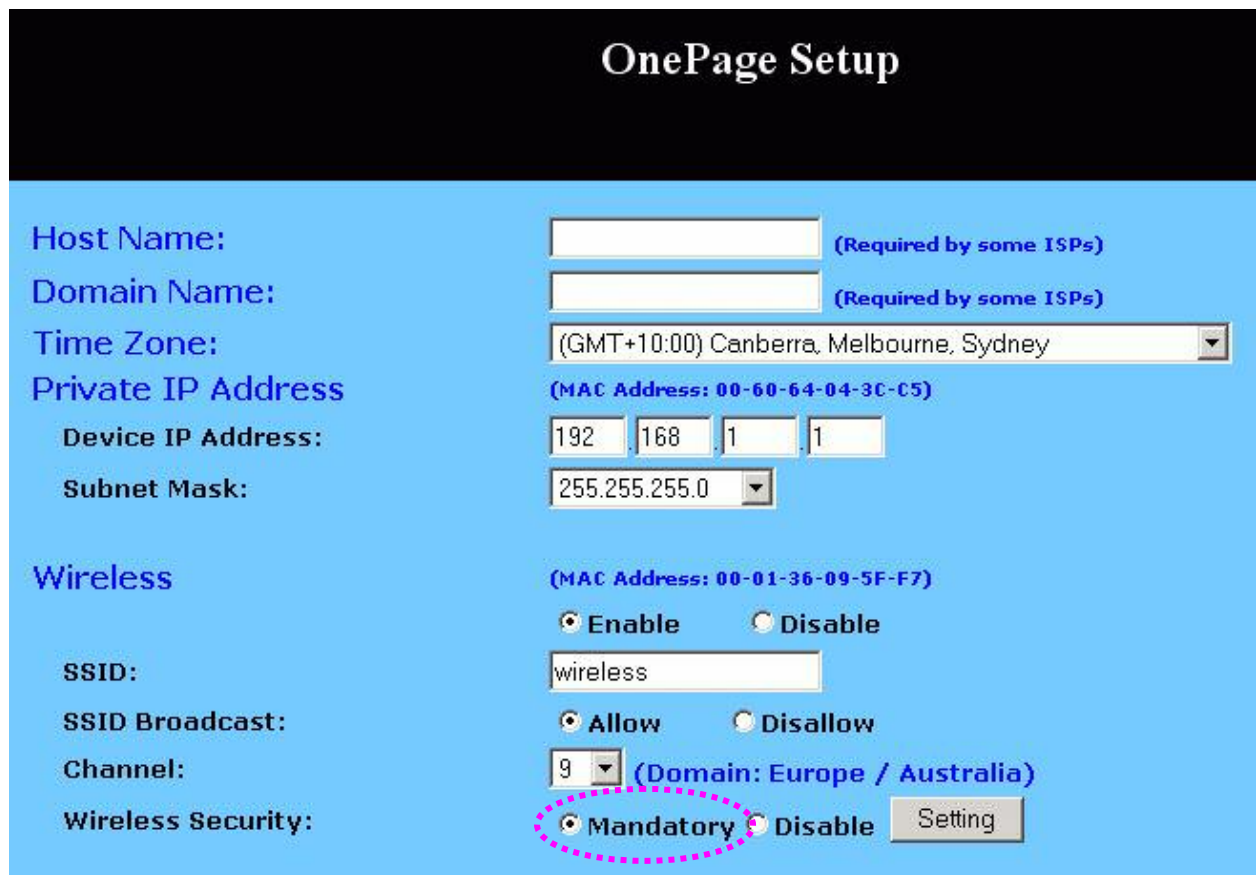


Enabling Wireless Security on NB5580W / NB5540 using WPA (XP SP2)

Step 1.

Go to **One Page Setup** on your NB5580 / NB5540. To do that type in <http://192.168.1.1> on your web browser.

Step 2.



The image shows a web-based configuration page titled "OnePage Setup". It has a light blue background with a black header bar. The page is divided into two main sections: "Host Name" and "Wireless".

Host Name: A text input field with a note "(Required by some ISPs)".

Domain Name: A text input field with a note "(Required by some ISPs)".

Time Zone: A dropdown menu showing "(GMT+10:00) Canberra, Melbourne, Sydney".

Private IP Address: A section with a note "(MAC Address: 00-60-64-04-3C-C5)".

Device IP Address: Four input fields containing "192", "168", "1", and "1".

Subnet Mask: An input field containing "255.255.255.0" and a dropdown arrow.

Wireless: A section with a note "(MAC Address: 00-01-36-09-5F-F7)".

Enable/Disable: Two radio buttons, "Enable" (selected) and "Disable".

SSID: An input field containing "wireless".

SSID Broadcast: Two radio buttons, "Allow" (selected) and "Disallow".

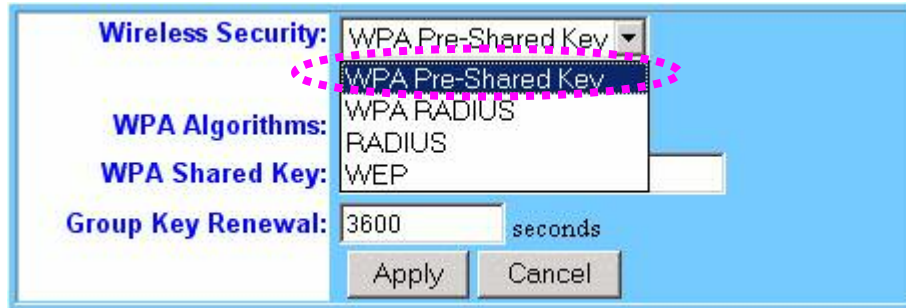
Channel: A dropdown menu showing "9" and a note "(Domain: Europe / Australia)".

Wireless Security: Two radio buttons, "Mandatory" (selected and circled in pink) and "Disable". A "Setting" button is next to them.

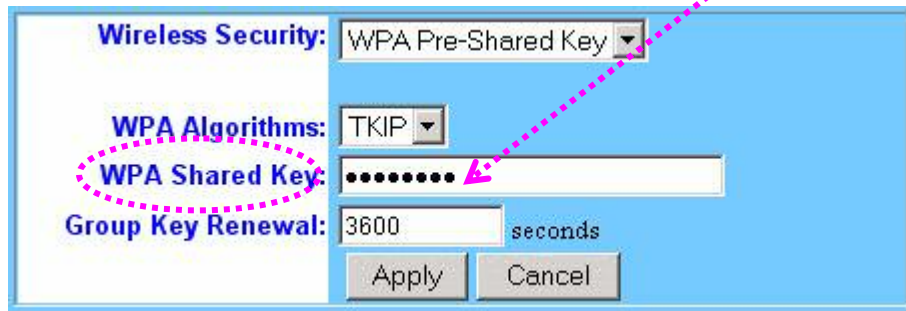
Set **Wireless Security** to **Mandatory** and click **Settings**.

Step 3.

3.A From a drop down menu select **WPA Pre-Shared Key**.



3.B When type in **WPA Shared Key** which could be anything, in our example it is password.




Attention!!! Encryption check list before you click apply:

<i>Wireless security</i>	WPA Pre-Shared Key
<i>Passphrase</i>	password

3.C Leave everything else as defaults and click **Apply** button on the bottom of the page.

Your wireless security settings have been successfully saved and now you need to set up an encryption on your wireless PC card / PCI card / USB key.

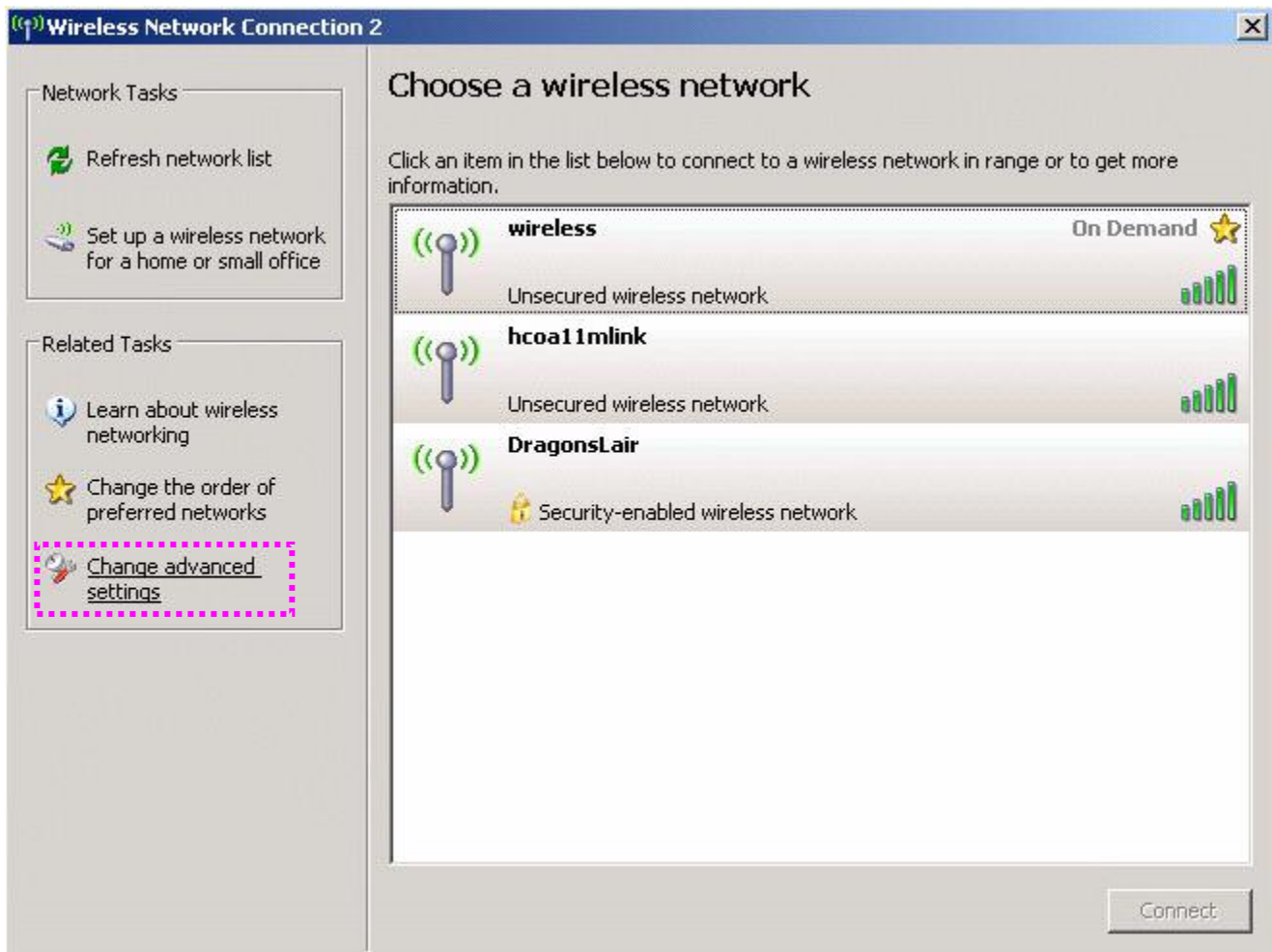
Step 4.

4.A Right click  icon, on the bottom right corner of your screen.

4.B Click on **View available wireless networks** option.



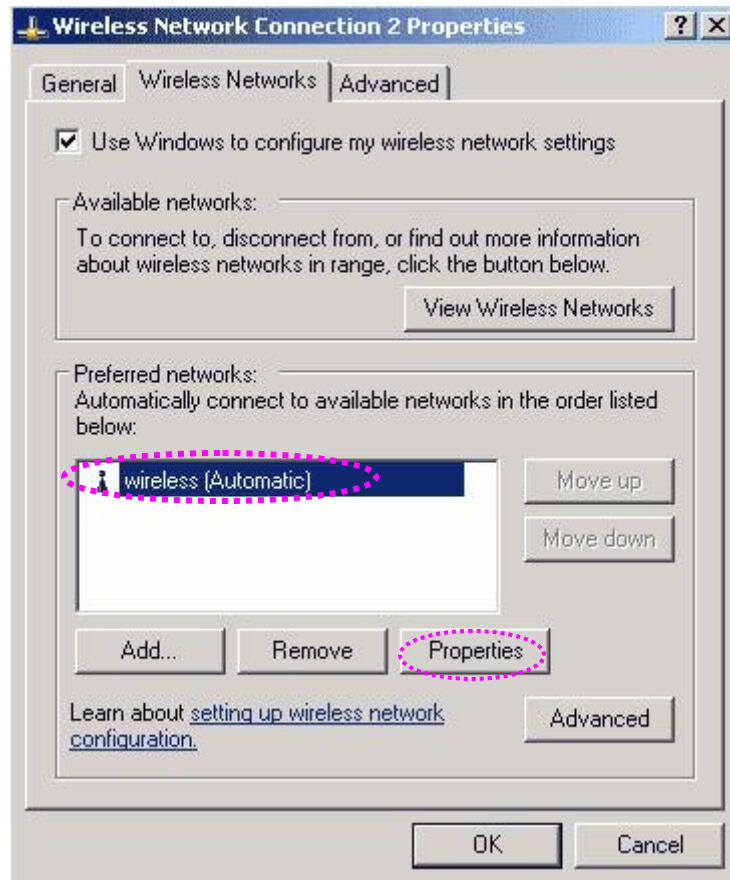
4.C On your left hand side click on **Change advanced settings** option.



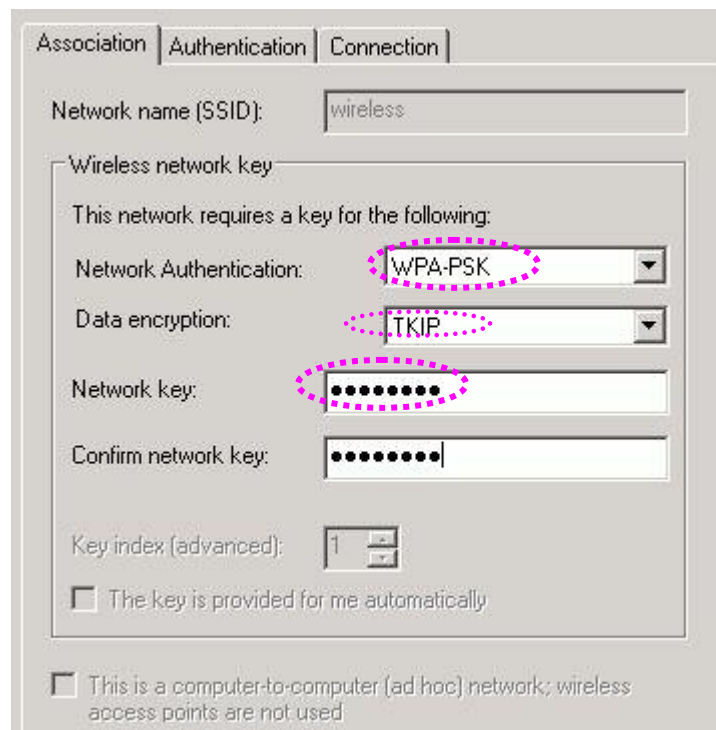
4.D Click on **Wireless Networks** tab.

4.E Highlight name of your wireless network which belongs to your NB 5580/ NB5540.

In our example it is **Wireless** and click on **Properties**.



4.F First of all from drop down menu select **Network Authentication** as **WPA-PSK**.



When from drop down menu **Data Encryption** select **TKIP**. Lastly, in the **Network key** field type in **WPA Key** which could be anything but in our example it is **password** (all in lower case). Retype it again in the field below.

*Once it is all done, click **Apply** button. Your encryption settings will be saved and wireless connection successfully reestablished.*