

Quick Start Guide



NB600W
Super-G Wireless Gateway

Introduction



NB600W Gateway



Thank you for choosing this NetComm Super G Wireless Gateway. Your gateway is pre-configured for easy installation. If you are not sure whether your Gateway has the default setup, please reset the unit back to factory defaults first. (Press the Reset button located on the back of the unit for 15 seconds while powering on).

Next make sure that you have installed your network adaptor properly. It will make the installation of this router easier and smoother. To connect the router to the Internet, please follow this guide or the tutorial on the CD.

Check what type of Internet connection you have subscribed to. Ask your ISP for your User Name and Password. If you have a PPPoE service, please remove the PPPoE dial-up program from your computer.

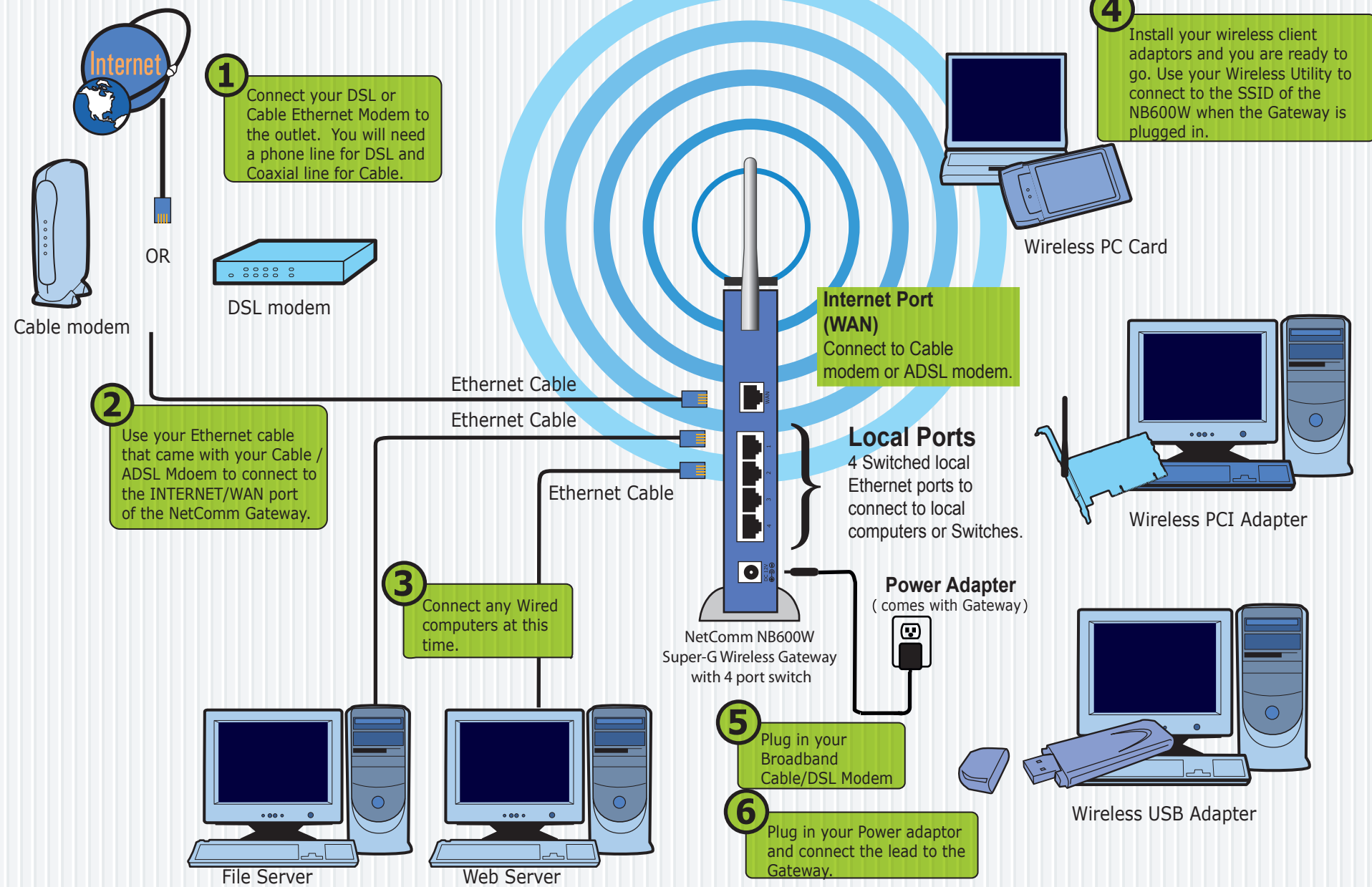
Use this Quick Installation Guide to setup your Ethernet or Wireless network with an internet connection.

- Network Installation**
To setup your hardware and wiring.
- Configure your PC's**
Getting your PC ready. You will either need to install a new network adaptor, or you will need to check the configuration of an existing adaptor.
- Configure the Gateway**
The gateway has a default setup for a cable modem connection. If you are using an ADSL connection, you will need to setup the ADSL settings in this Gateway with the information provided by your ISP.

0 1 2 3 ok

Step 1 Network Installation

Products are not drawn in scale



Check your physical network

Now check the network indicator LED's to:

- Make sure that your Gateway is starting correctly.
- You have checked the Gateways LED indicators to see the network status.

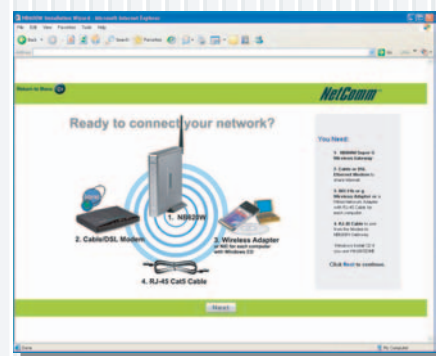
Network LAN LED's
1
2
3
4
WLAN
WAN
POWER

Function	Behavior	Definition
Power	Off	Power Off
	Green	Power On
WAN (Internet)	Off	WAN link abset or power off
	Green	Indicates ISP connection up
WLAN	Off	Wireless Link absent or off
	Green	Wireless link established
Network LAN LED's(1-4)	Flashing	Wireless link data active
	Off	LAN link absent or power off
	Green	100Mbps Ethernet link established
	Amber	10Mbps Ethernet link established
	Flashing	(Any Color) Ethernet link data active

Starting your installation



When you insert your NetComm CD, you can choose to use the **On-line Tutorial** to configure your Gateway or you can use this printed Quick Start Installation Guide.



- Click on each **install topic** to help you install the Gateway.
- Start from the first one and work your way down.

Default Setup



Management Utility:
http://192.168.1.1
User Name & Password:
Enter
User name: admin
Password admin
Then press OK to login.

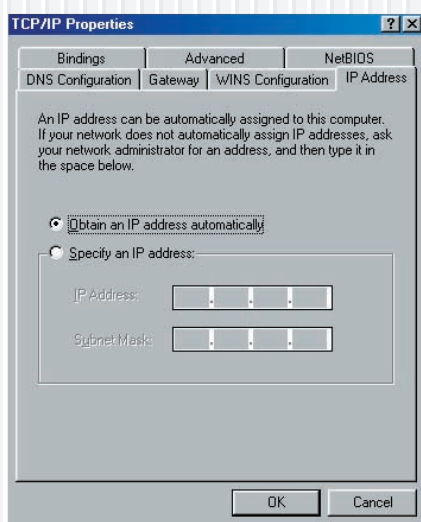
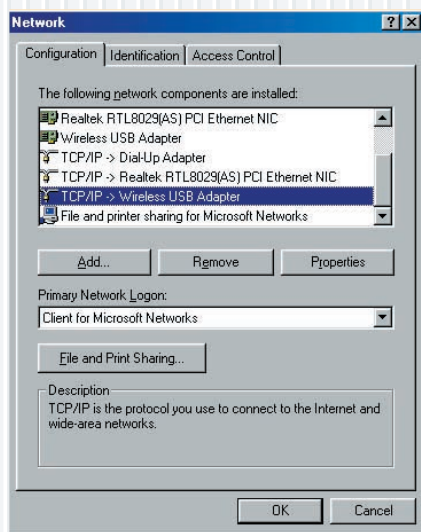
How to Set back the default?

If you need to reset your NetComm NB600W Gateway back to factory defaults, use a ball pen or pencil to depress the reset button located on the back panel of your Gateway. Depress the reset button while powering on the Gateway and keep it depressed for at least 15 seconds. The gateway will restore factory defaults and restart again.

Step 2 Configure your PCs

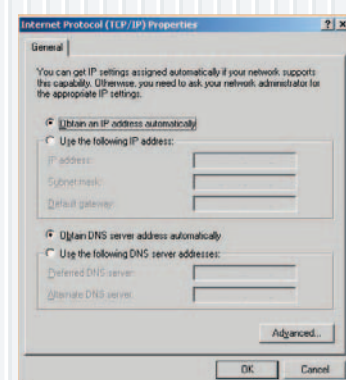
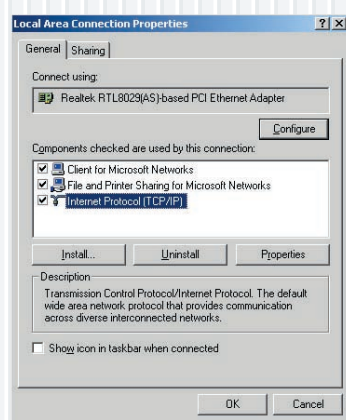
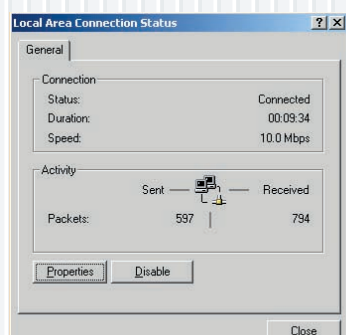
Windows 95/98/ME

- Open the **Control Panel** window by clicking **Start > Settings > Control Panel**. Then click on the **Network Icon**, the network control panel will appear.
- Click on the **Configuration Tab** to bring up the configuration screen. Select the Network components labeled TCP/IP by clicking on it. If you have multiple TCP/IP listings, make sure your select the one associated with your network adaptor, then click on the Properties button to bring up the TCP/IP **Properties** window.
- Select the **IP Address** tab to bring up the IP adress setting dialog box. Select the - **Obtain an IP address automatically** function by checking the button.
- Next click on the **DNS Configuration** tab to bring up this dialog box. Select the - **Obtain an IP address automatically** function by checking the button.
- Click **OK** twice to confirm and save your changes.
- You will be prompted to restart your computer.



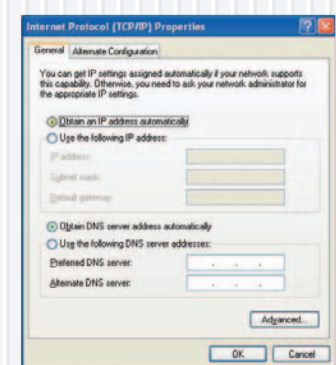
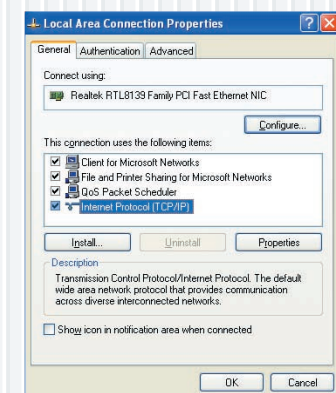
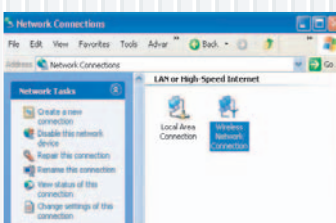
Windows 2000

- Open the **Control Panel** window by clicking **Start > Settings > Control Panel**. Then click on the **Network and Dial-up Icon**, the Network and Dial-up Connection window will appear.
- In **Network and Dial-up Connections** window, double-click the **Local Area Connection** icon.
- In the **Local Area Connection Properties** dialog box, select the **Internet Protocol (TCP/IP)** and then click on the **Properties** button to bring up the properties dialog box.
- In the **Internet Protocol (TCP/IP) Properties** dialog box, select the - **Obtain an IP address automatically** function by checking the button. Additionally, select the - **Obtain DNS server address automatically** function by clicking the button.
- Click **OK** twice to confirm and save your changes and close the **Control Panel**.

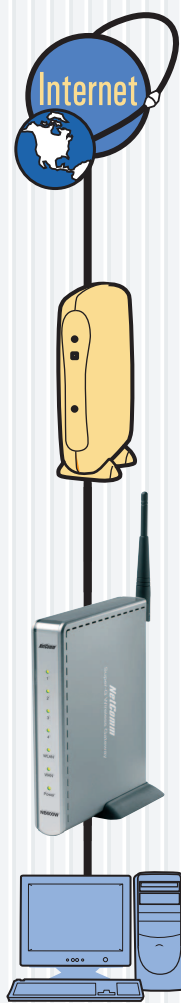


Windows XP (XP Interface)

- Open the **Control Panel** window by clicking **Start > Control Panel**. Then click on the **Network and Intenet Connections** icon, and then Click **Network Connections** window will appear.
- In the **Network Connections** window, right click the **Local Area Connection** or the **Wireless Network Connection** icon, depending on which connection you are using for this computer, and select **Properties**.
- In the **Connection Properties** dialog box, select the **Internet Protocol (TCP/IP)** and then click on the **Properties** button to bring up the properties dialog box.
- In the **Internet Protocol (TCP/IP) Properties** dialog box, select the - **Obtain an IP address automatically** function by checking the button. Additionally, select the - **Obtain DNS server address automatically** function by clicking the button.
- Click **OK** twice to confirm and save your changes and close the **Control Panel**.



Restart Network



After you have completed your Network Installation and Gateway Configuration, you will need to restart your entire network to make sure the settings you have made take effect.


Please power down all network components waiting for at least 30 seconds, then:

- Power on your Cable/ADSL Modem. Wait until it has booted up.
- Power on the NB600W Gateway and wait until it has finished booting up.
- Power on your PC. During the boot-up process, your computer will sense the network changes and setup your new settings.

Step 3 Configure the Gateway Login Management Utility

Open your browser (i.e. Internet Explorer or Netscape) and enter **192.168.1.1** for login.

User name: Password:

Address  http://192.168.1.1/

Remember my password ☐

OK Cancel

Default settings are:
User Name is **admin**
Password is **admin**

Call your ISP for details on your Internet Connection



Your Gateway might need special settings that only your ISP can provide.

Ask:

- Do I have a Dynamic IP, PPPoE, PPTP, Static IP or Other?
- Do I need a specific MAC Address to logon?
- Do I need a specific Domain Name, Host Name or DNS server?

For PPPoE: Get your Login/Password now.

For PPTP: Get you Login/Password and Server IP now.

For Static IP: Get your IP, Subnetmask, Gateway and DNS now.

Configure the Gateway

I have a Dynamic IP connection:

Dynamic IP

Dynamic IP (DHCP) is the most common setup for Cable Broadband Subscribers. These steps will not be necessary if your ISP does not require specific settings.

NetComm SUPER-G WIRELESS GATEWAY

Setup Wizard

You Are Now In > Internet Port > DHCP Configuration

Protocol: DHCP (Dynamic IP Configuration for Cable)

Host Name:

Domain Name:

Use Static DNS: ☐

Primary:

Secondary:

MAC Address:

Copy From This PC: ☐

Save Undo

5 Last Step

Click SAVE to save your change.

3 Enable Static DNS and enter if required by ISP.

2 Enable Domain Name or Host Name if required by ISP.

4 Enter specific MAC address from ISP if required by ISP.

After checking your Internet connection

You have two ways to setup your NetComm NB600W Gateway:
Using the Setup Wizard or Manually. Which way do you want to use?

Use our Setup Wizard:

Click here in the Gateway Management Utility, choose **Detect** and then follow the steps in the Internet browser screen. Press **Retry**, if the Wizard does not detect the Gateway the first time.

NetComm Broadband Solutions

SUPER-G WIRELESS GATEWAY

Setup Wizard

You Are Now In > Setup Wizard

Setup Wizard will detect your Internet Connection.

Want To Configure The Router Myself

Or Configure Manually:

Use this option if you cannot use the Setup Wizard. Get your Internet Information from your ISP and use this Guide to help you enter it into the Gateway.

For a Cable Modem User:

- Try your internet now. You need to know how to reset your cable modem. Power off the modem for 1 minute to reset your cable modem. Sometimes, you may need to reset your modem two or more times for it to reset. If you are unsure, please ask your ISP for details.

For an ADSL User:

- You need to know which ADSL network you have: PPPoE, PPTP, Static Routing, or Dynamic. Ask your ISP for details.

- PPPoE:** Most users have a PPPoE Connection. If you need to click a (dial-up) program before you get on line, or you have a user name and password with your account, you probably have a PPPoE network. You need to have your user name, password and optional parameters including IP, subnet mask, gateway, and DNS to setup the connection.

- PPTP:** Similar to PPPoE. Has been used in Europe.

- Static:** You need to have the IP address, subnet mask, gateway, and DNS IP's to setup the connection.

- Dynamic:** Configuration is the same as with a cable modem.

For a Corporate User:

- Contact your network administrator about the type of details you need for your corporate network.

I have an ADSL PPPoE Connection

PPPoE

Most domestic ADSL subscribers have a PPPoE DSL connection. Ask your ISP.

You must remove any PPPoE software installed in your computer before setup.

NetComm Broadband Solutions

SUPER-G WIRELESS GATEWAY

Setup Wizard

You Are Now In > Internet Port > PPPoE Configuration

Protocol: PPPoE (ADSL Dynamic IP Configuration)

Host Name:

Domain Name:

User Name: Your User Name

Password:

Confirm Password:

Service Name:

Packet Size (MTU): 1492

Disconnect After Idle: 0 Minutes

Enable Unnumbered PPP Connection: ☐

Local IP Address:

Use Static DNS: ☐

Primary:

Secondary:

MAC Address: 00 01 38 11 22 33

Copy From This PC: ☐

Save Undo

1 Select PPPoE to enable your PPPoE connection.

2 Enter the Domain, if your ISP requires it.

3 Enter the user name and password given by your ISP.

4 Enter the rest of these fields only if your ISP asks you to do so.

6 Last Step

Click SAVE to save your change.

5 Set it to 0 if you never want your Modem to disconnect from your ISP.

I have an ADSL PPTP Connection

PPTP

PPTP is a popular communication protocol used in Europe.

NetComm Broadband Solutions

SUPER-G WIRELESS GATEWAY

Setup Wizard

You Are Now In > Internet Port > PPTP Configuration

Protocol: PPTP (ADSL Dynamic IP Configuration)

Host Name:

Domain Name:

User Name: Your User Name

Password:

Confirm Password:

Server IP Address:

Subnet Mask:

Packet Size (MTU): 1492

Disconnect After Idle: 0 Minutes

Enable Unnumbered PPP Connection: ☐

Local IP Address:

Use Static DNS: ☐

Primary:

Secondary:

MAC Address: 00 01 38 11 22 33

Copy From This PC: ☐

Save Undo

1 Select PPTP to enable your PPTP connection.

2 Enter the Domain, if your ISP requires it.

3 Enter the user name and password given by your ISP.

4 Enter the Server IP given by your ISP.

6 Last Step

Click SAVE to save your change.

5 Set it to 0 if you never want your Modem to disconnect from your ISP.

I have a Static Routing Connection

Static Routing

If your ISP or network manager gives you a fixed IP address, you need to set up Static Routing.

NetComm Broadband Solutions

SUPER-G WIRELESS GATEWAY

Setup Wizard

You Are Now In > Internet Port > Static IP Configuration

Protocol: Static IP Configuration

Host Name:

Domain Name:

IP Address:

Submask:

Gateway:

Primary DNS:

Secondary DNS:

MAC Address: 00 01 38 11 22 33

Copy From This PC: ☐

Save Undo

1 Select Static Configuration to enable your Static connection.

2 Enter all routing information to setup the static routing correctly.

3 Last Step

Click SAVE to save your change.

How to check your network

Network Utility - IPCONFIG, PING

How to check the network status on your PC?

The **IPCONFIG** is a pre-installed command line based tool in Microsoft Windows to list the network adaptors configured on your PC. Please open the command line window by clicking **Start > RUN**, and enter **command** for Windows 98/ME or enter **cmd** for Windows 2000/XP, then click **OK**.

In the command line window, type **IPCONFIG** and press enter. Your PC will list the status of your network cards on your PC. (For detailed usage, please type **IPCONFIG/?** and press enter for help.)

Windows 98

Start

Run

Enter: ipconfig

OK Cancel

Microsoft Windows [Version 5.00.2195]
(C) Copyright 1985-1999 Microsoft Corp.
C:\>ipconfig

Windows 2000 IP Configuration

Ethernet adapter Local Area Connection 1:

Connection-specific DNS Suffix . :
IP Address : 192.168.0.148
Subnet Mask : 255.255.255.0
Default Gateway : 192.168.0.1

C:\>ipconfig/?

Is there a user friendly configuration tool?

A configuration tool with a graphical user interface is also available in Windows 98/ME and Windows XP.

Windows 98/ME

click **Start > RUN**, enter

winipcfg, then click **OK**.

IP Configuration

Ethernet Adapter Information

Adapter Address: 00:50:FC:4E:36:58

IP Address: 192.168.0.2

Subnet Mask: 255.255.255.0

Default Gateway: 192.168.0.1

OK Release Renew

Release All Renew All More Info >>

Windows XP

Click **Start > Settings > Control Panel**, then click the **Network and Internet Connections** icon. In the **Network and Internet Connections** window, double-click the **Local Area Connection** to get the status window. Click the **Support** tab to show the network status.

Local Area Connection Status

General Support

Internet Protocol (TCP/IP)

Address Type: Assigned by DHCP

IP Address: 192.168.0.2

Subnet Mask: 255.255.255.0

Default Gateway: 192.168.0.1

Details...

Refresh

Close

How can I find out if another network component is connected?

PING is a pre-installed command line based tool in Microsoft Windows to send a request to the destination you named (192.168.1.254 or www.netcomm.com.au). If the network device you've targeted is on-line you will get a response. (For detailed usage, please type **PING/?** for help.)

Command Prompt

Pinging 192.168.1.254 with 32 bytes of data:

Reply from 192.168.1.254: bytes=32 time=1ms TTL=128

Reply from 192.168.1.254: bytes=32 time=1ms TTL=128

Reply from 192.168.1.254: bytes=32 time=1ms TTL=128

Reply from 192.168.1.254: bytes=32 time=1ms TTL=128

Ping statistics for 192.168.1.254:

Packets: Sent = 4, Received = 4, Lost = 0 (0% loss),

Approximate round trip times in milliseconds:

Minimum = 0ms, Maximum = 0ms, Average = 0ms

C:\Documents and Settings\Tech.TECH\My Documents>ping/?

NetComm Tech Support Center

NetComm
Broadband Solutions

Website: www.netcomm.com.au

Tech Support Email: support@netcomm.com.au

Sales Email: sales@netcomm.com.au

Using Super-G

Super 802.11g

Using the Super-G modes:

To use Super-G Mode at maximum speeds, you will need Super-G adapters (Gateway PC Cardbus, Gateway PCI Card) exclusively connected to your network.
The router will have to be manually set to operate in this mode, accessible through the router's access page. The default operation mode for the Gateway is 54Mbps Mixed b/g mode.

To set Super-G operating modes:

- Access the Gateway at <http://192.168.1.1>
Default user name: admin Default password: admin (unless you've changed it)

Address  http://192.168.1.1/

- Click Wireless LAN in the left menu.

- Find Operation Mode and choose from:

Super-G Auto: Allows 802.11b/g and Super-G adapters to connect at their best speeds. This can slow performance since the Gateway has to accommodate the slowest adapter.

Super-G Only: Only Super-G adapters can connect to or detect the Gateway in this mode. This ensures the best Super-G performance.

802.11 b/g Mixed: Allows 802.11b/g devices to connect at their best speeds. Super-G adapters will connect at 54Mbps.

802.11b Only: Allows all 802.11 b/g devices to connect at 11Mbps

- Press **Save** to save changes made to the Gateway.

NetComm Broadband Solutions

SUPER-G WIRELESS GATEWAY

Setup Wizard

You Are Now In > Wireless LAN

IP Enable Wireless Access: ☐

SSID:

Region:

Channel:

Operation Mode:

Enable Wireless Protected Access (WPA): ☐

Security Mode:

Save Undo

Super-G Wireless Adapter will automatically connect at maximum speed when they connect to a Super G enabled Gateway. No further setup on the adapter is necessary.

NP600W Super-G Wireless Gateway

NetComm
Broadband Solutions

NetComm Limited
ABN 85 002 490 486
Unit 1,2-6 Orion Rd
Lane Cove NSW 2066
AUSTRALIA

Telephone: (02) 9424 2000
Facsimile: (02) 9424 2010

www.netcomm.com.au

