



WLAN PCI Adaptor User Manual

WLG25PCI



Table of Contents

I.	Introduction	2
	Package Contents	2
	Minimum System Requirements	2
II.	Connecting the Wireless Adapter	3
	PCMCIA	3
	PCI	3
	MiniPCI	3
III.	Installing the Wireless Adapter	4
IV.	Uninstalling the Wireless Adapter	7
V.	Configuring the Wireless Adapter	9
	Connecting to an existing network	9
	Configuration	10

Introduction

Thank you for purchasing the Wireless Adapter. This Wireless Adapter is easy to use and easy to setup. If you are tired of all those messy wires needed to connect a lap-top to your Home network, then take your networking to the next level with the Wireless Adapter. You will be able to share files, printers and even your High-Speed Internet access wirelessly.

Package Contents

Make sure the following items came in this package:

- Wireless Adapter
- Wireless Adapter Installation and User's Manual CD

Minimum System Requirements

- Microsoft Windows 98 Second Edition (SE), Windows ME, Windows XP, or Windows 2000 installed

Connecting the Wireless Adapter

PCMCIA

1. Your computer can be on or off, it will not affect the installation process. Locate an available Type II or Type III PCMCIA slot on your laptop. If you are not sure where this may be, please consult your laptop's User Manual.
2. Insert the Wireless Adapter into the appropriate PCMCIA slot. Your hardware is now installed.

PCI

1. Power down the computer.
2. Locate the PCI slot on the motherboard, and carefully insert the PCI Wireless Adapter.
3. Power on the computer.

MiniPCI

1. Power down the notebook computer.
2. Locate the MiniPCI slot on the notebook, and carefully insert the MiniPCI Wireless Adapter.
3. Power on the notebook computer.

Installing the Wireless Adapter

Note: If you have installed the Wireless Adapter driver before, please uninstall the old version first.

1. After you have installed the Wireless Adapter your computer will display a **Found New Hardware Wizard** screen, click **Cancel** to continue.



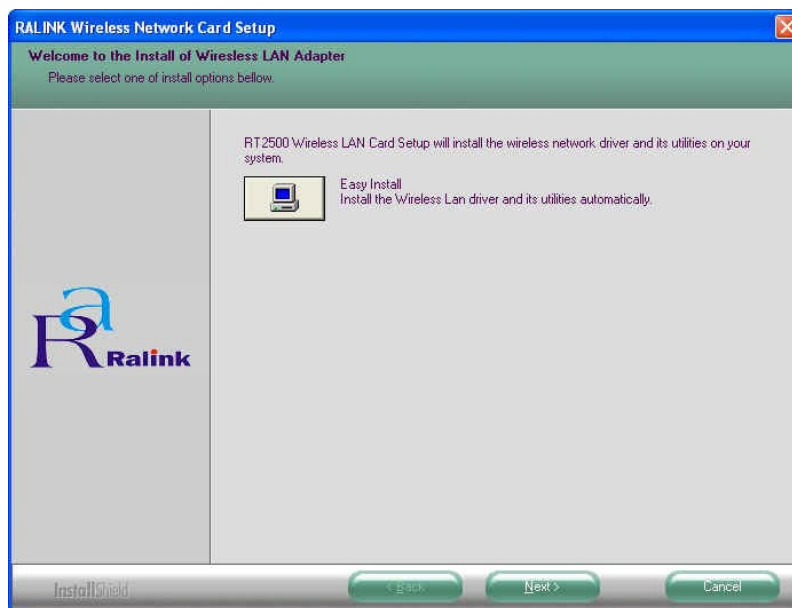
2. Insert Wireless Adapter Installation and User's Manual CD into your CD-ROM, then the installation will be activated automatically. Or you may go to the directory where the Wireless Adapter Installation stored, then double-click **InstallShield Setup Launcher** to begin the installation.



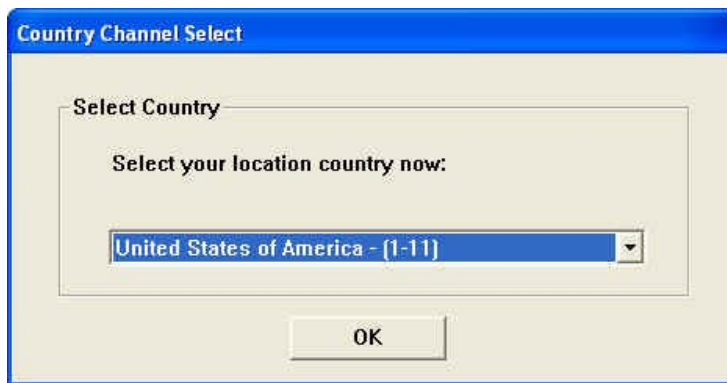
3. Main Menu screen will display, click **Install Driver** to continue.



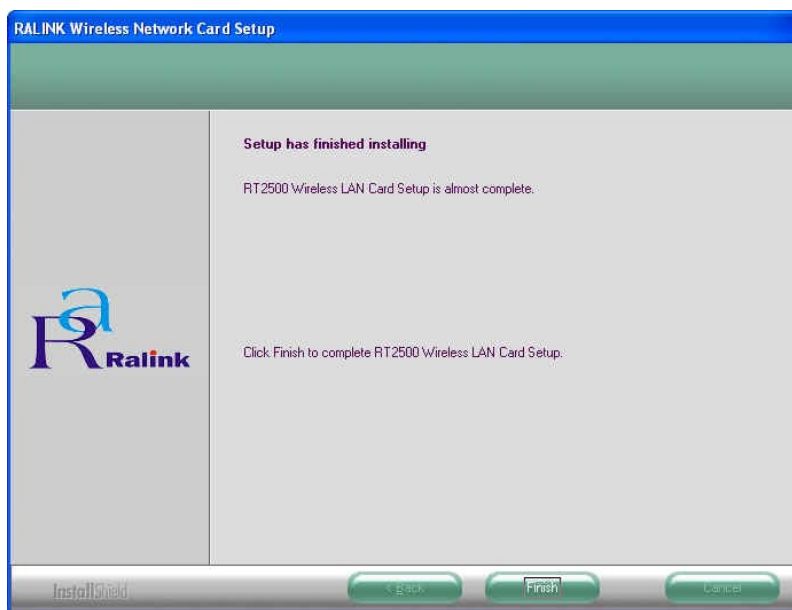
4. RALINK Wireless Network Card Setup will install the driver on your system, click **Next** to continue.





5. Select the Country Channel, and click **Next** to continue.



6. The installation is now complete. Please click **Finish**.



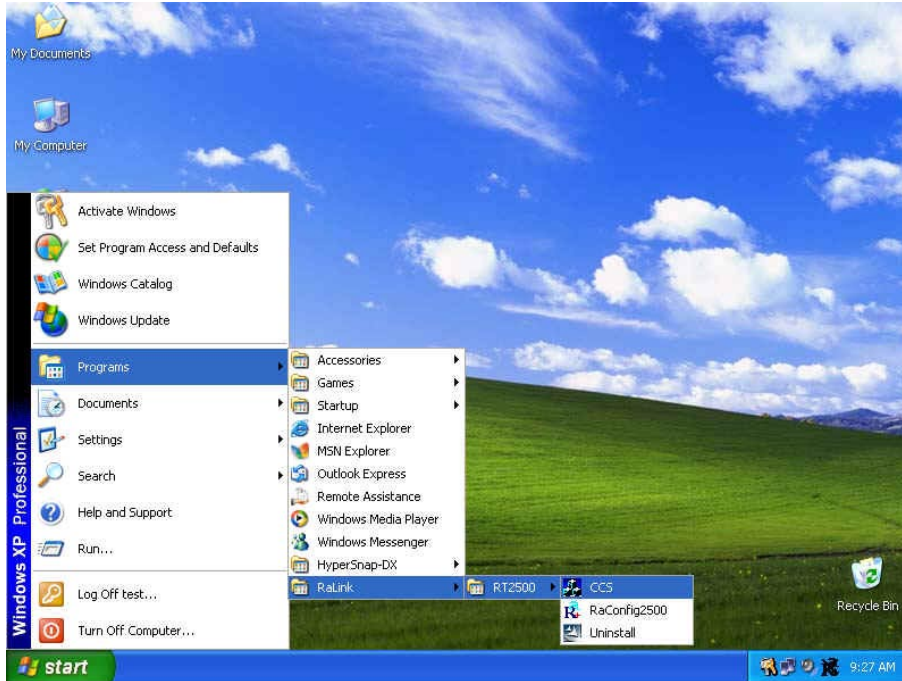
Note: When you complete the installation, the utility icon  will appear on the system tray. If not, it means that the installation failed. Please uninstall the driver and repeat the process.

7. Right-click the utility icon , Utility Selection screen will display, select the utility you want to use.

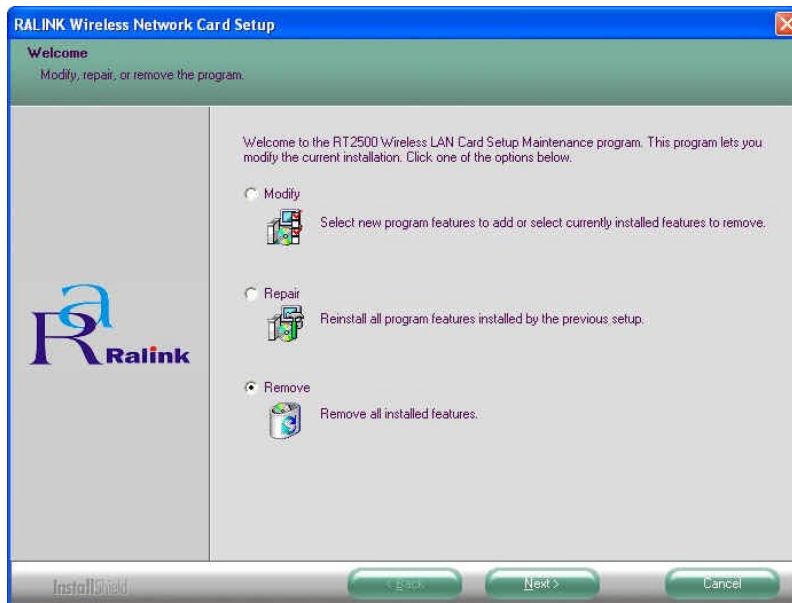
Launch Config Utilities
Use RaConfig as Configuration utility
Exit

Uninstalling the Wireless Adapter

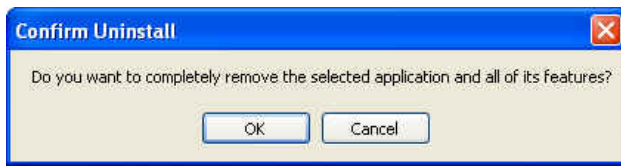
1. For uninstalling the Wireless Adapter, please go to: **Start -> Programs -> Ralink -> RT2500** under Windows environment. Then click **Uninstall**.



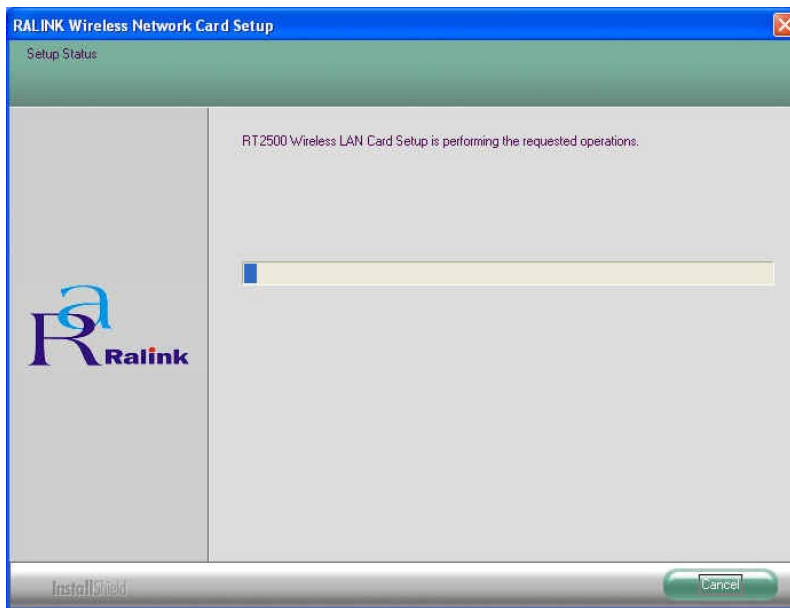
2. Select **Remove** to uninstall the Wireless Adapter.



3. The **Confirm Uninstall** screen will display, click **OK** to confirm.



4. Wait for removing the utility.



5. After completing the uninstallation, click **OK**.



Configuring the Wireless Adapter

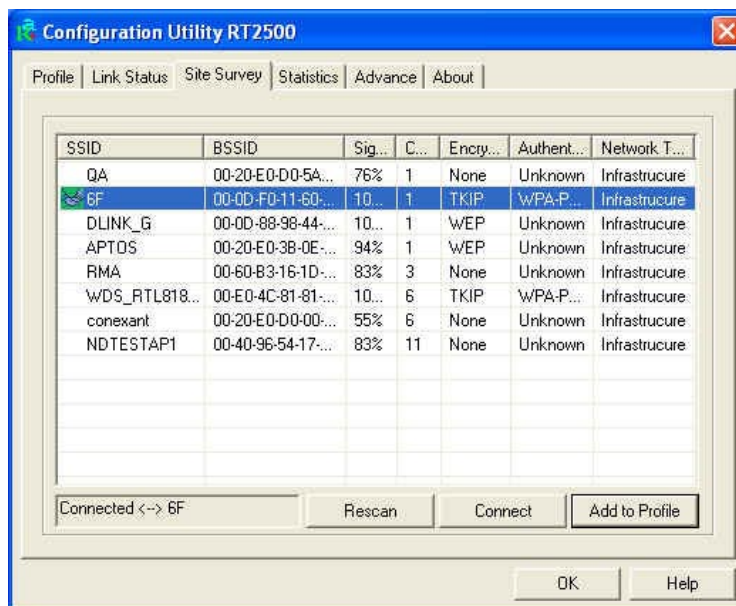


Double-click the utility icon in your system tray to begin the utility configuration.

Connecting to an existing network

Select **Site Survey** Tab, all available Access Points would be listed.

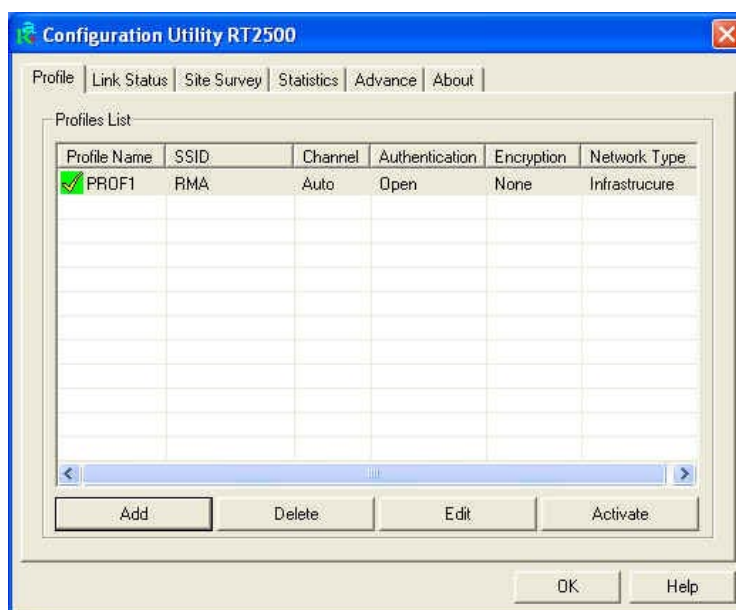
Click on the desired Access Point, and click **Connect** to connect.



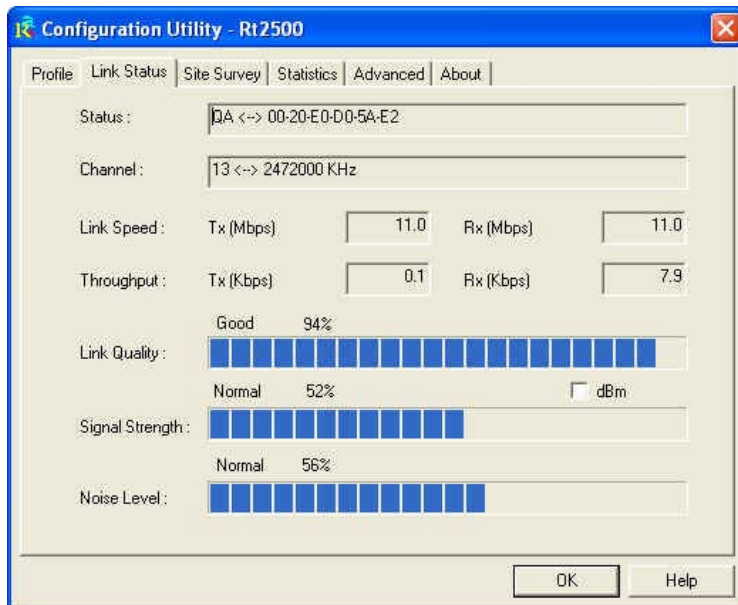
Configuration

- Profile

The **Profile Tab** allows you to set values for all parameters by selecting a previously defined profile. To create a profile, click **Add**, type a profile name and set the corresponding parameters. If one of the profiles is no longer used, you may remove it by clicking the **Delete** button. After changing parameters, click the **Activate** button to take effect. You can have multiple profiles and modify the profile at any time.



- Link Status



Status

The field shows the association status to available Access Point with SSID<->MAC address of the Access Point.

Channel

Shows the channel on which the connection is made.

Link Speed

Shows the highest transmit rate of the current association.

Throughput

This displays the instantaneous wireless Receive and Transmit throughput in Kbits per second.

Link Quality / Signal Strength

The Link Quality and Signal Strength bar graph is only active when the node is in Infrastructure Mode. The bar graph displays the quality and strength of the link between the node and its Access Point.

Noise Level

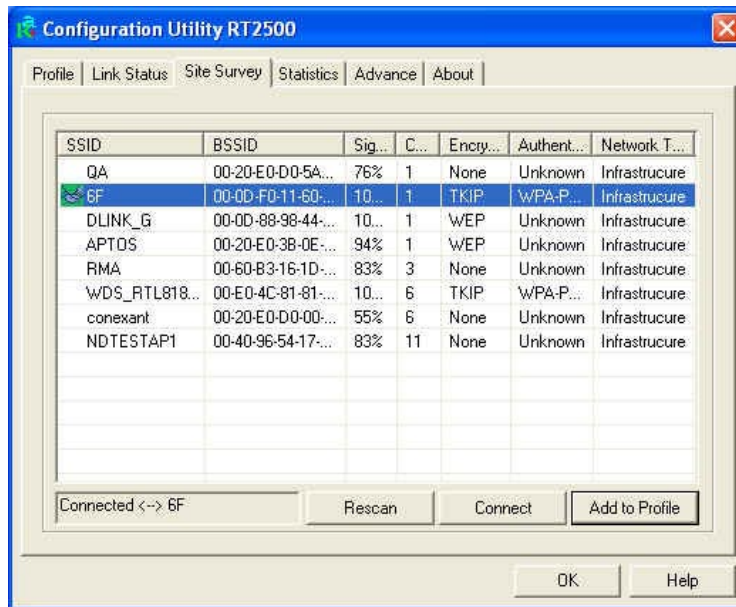
This displays the noise level of the link between the node and its Access Point.

- Site Survey

Site Survey Tab lists the features of the available Access Points within range of the Wireless Adapter's signal.

Click on the desired Access Point, and click **Connect** to connect.

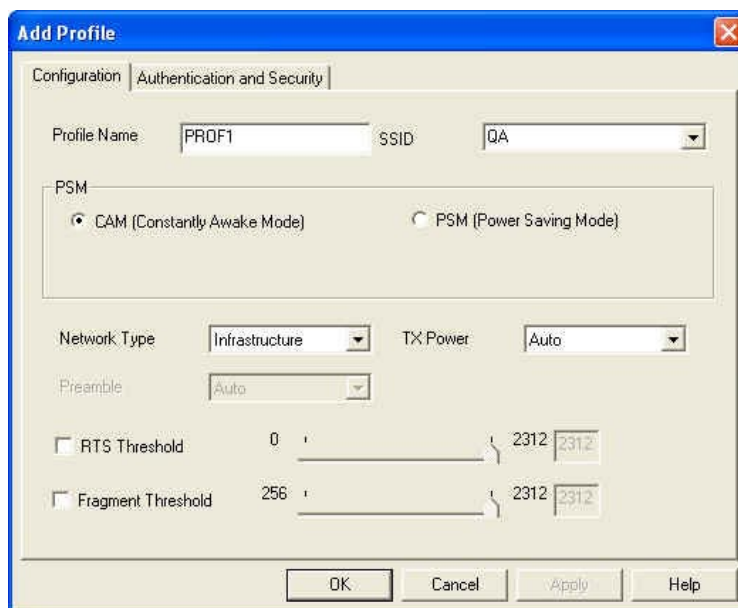
You may click **Rescan** to refresh the list.



Add to Profile

You may select an Access Point, and click **Add to Profile** to include it to Profile List.

Under **Add Profile** screen / **Configuration** Tab, you may set Power Saving Mode, Network Type, Transmit Power, RTS Threshold, and Fragment Threshold.



Under **Add Profile** screen / **Authentication and Security** Tab, you may set Authentication Type, Disable 802.1x, 802.1x Setting, Encryption, WPA Preshared Key, and Wep Keys.

Click **OK** when you have finished the settings.

Or click **Cancel** to abort your new settings for Add to Profile.

The 'Add Profile' dialog box is shown with the 'Authentication and Security' tab selected. The 'Authentication Type' is set to 'Open'. There are buttons for 'Disable 802.1x' and '802.1x Setting'. The 'Encryption' is set to 'None'. The 'WPA Preshared Key' field is empty. The 'Wep Key' section contains four rows, each with a radio button, a label (Key#1 to Key#4), a 'Hex' dropdown, and an empty text field. At the bottom are 'OK', 'Cancel', 'Apply', and 'Help' buttons.

Select **Profile** Tab, you may find the new added profile in Profile List.

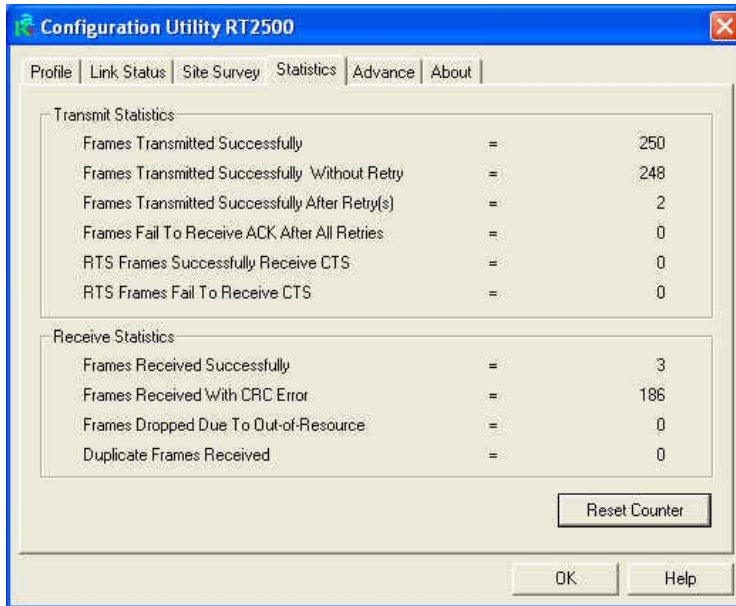
The 'Configuration Utility RT2500' window is shown with the 'Profile' tab selected. The 'Profiles List' table contains the following data:

Profile Name	SSID	Channel	Authentication	Encryption	Network Type
PROF1	RMA	Auto	Open	None	Infrastrucure
<input checked="" type="checkbox"/> PROF2	6F	Auto	WPA-PSK	TKIP	Infrastrucure

Below the table are 'Add', 'Delete', 'Edit', and 'Activate' buttons. At the bottom of the window are 'OK' and 'Help' buttons.

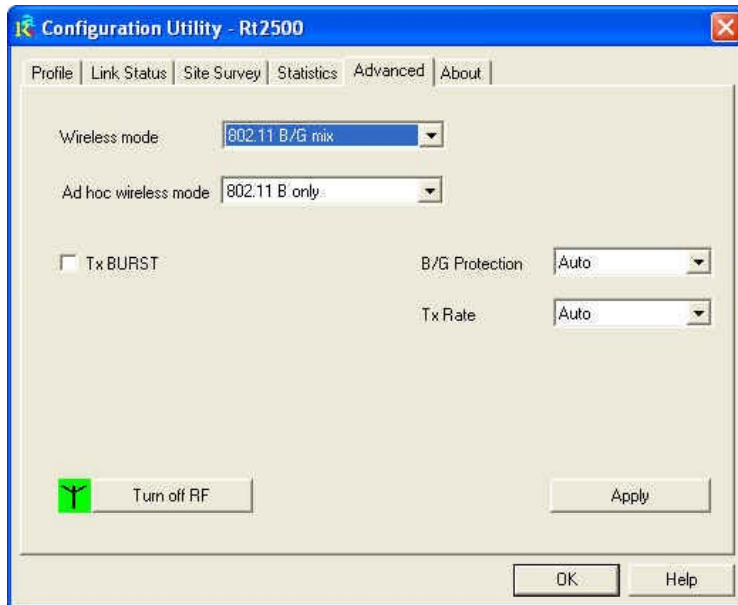
- Statistics

The **Statistics** Tab provides information about the Transmit and Receive frames.



- Advance

The Configuration Utility also offers the advanced configuration for user to set the Wireless Adapter under certain network environment. These advanced options include Wireless Mode, Ad hoc wireless mode, TX BURST, B/G Protection, Tx Rate, and Turn Off RF.



- About

About Tab shows the product version including the detail of Configuration Utility, Driver, EEPROM, and NIC MAC Address.

