

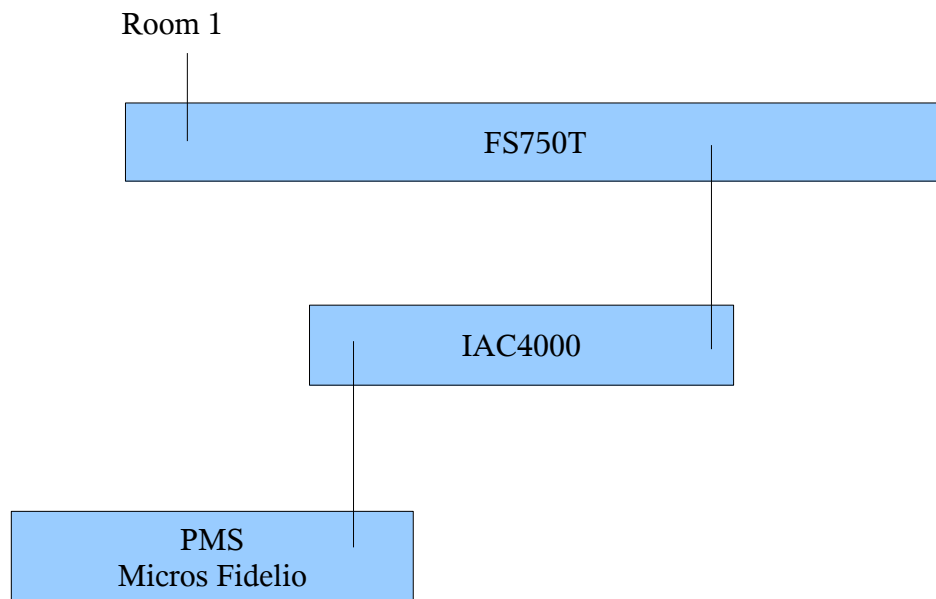
NetComm IAC4000 Port Location Mapping

The IAC4000 allows guests to be billed for Internet usage to their room instead of paying upfront as in a traditional hotspot environment.

The IAC4000 accepts incoming packets that are tagged using the IEEE 802.1Q VLAN tagging standard. Upon receiving the tagged packet the IAC4000 will redirect the user to a login page requesting them to select a Billing Profile (e.g. 1 day @ \$25).

The IAC4000 returns untagged packets, so you need to configure your VLAN switch or DSLAM accordingly or else these packets will be dropped.

In the following example I have setup the IAC4000 with a Netgear FS750T Smart Switch.

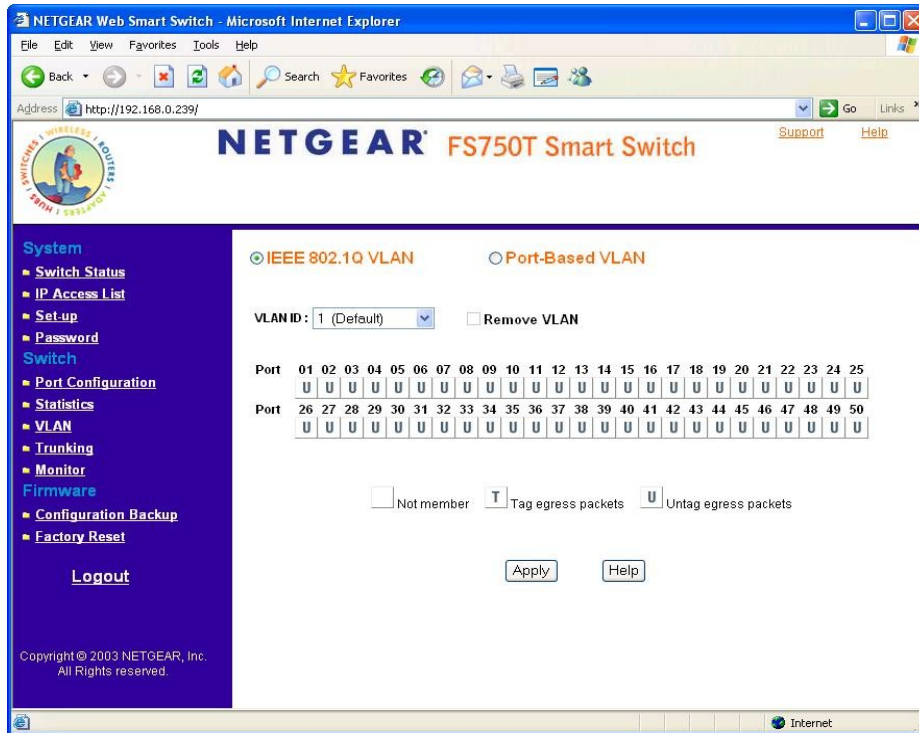


Description:

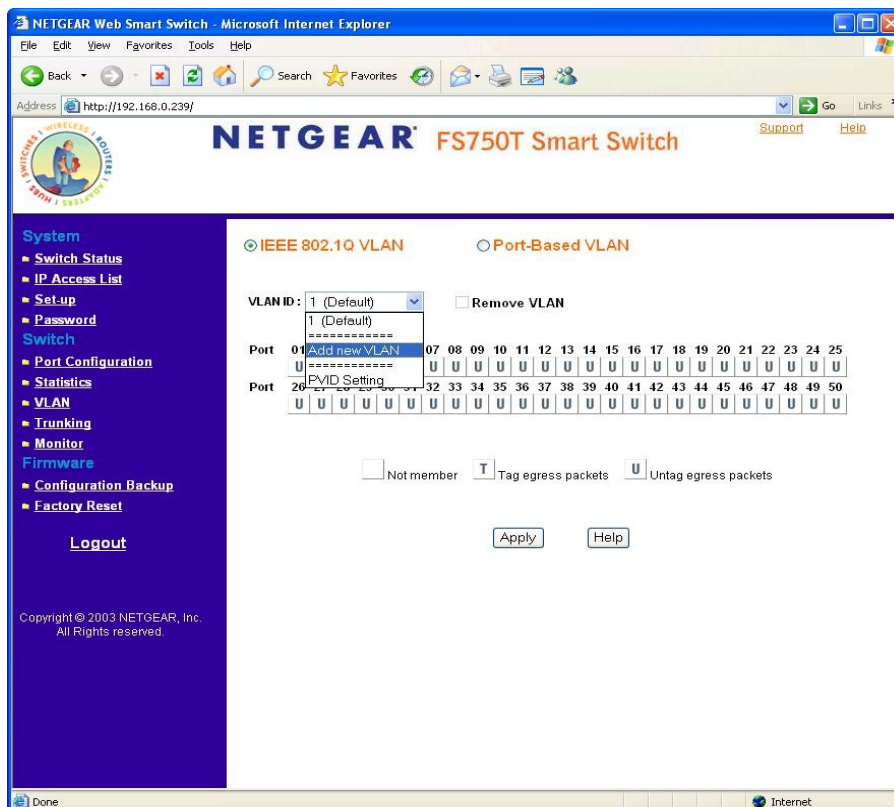
- Room 1 is connected to port 1 on the FS750T switch
- Port 50 on the FS750T is connected to the IAC4000's LAN port
- The IAC4000 is connected to the PMS

Netgear FS750T Setup:

0. Navigate to VLAN page
1. Select IEEE 802.1Q VLAN



2. From the VLAN ID drop-down, select 'Add new VLAN'



3. Enter a VLAN ID (eg. 101 for room 1)
4. Port 1 and 50 belong to this VLAN so select Untagged (U) for port 1, and select tagged (T) for port 50.
5. Click 'Apply'



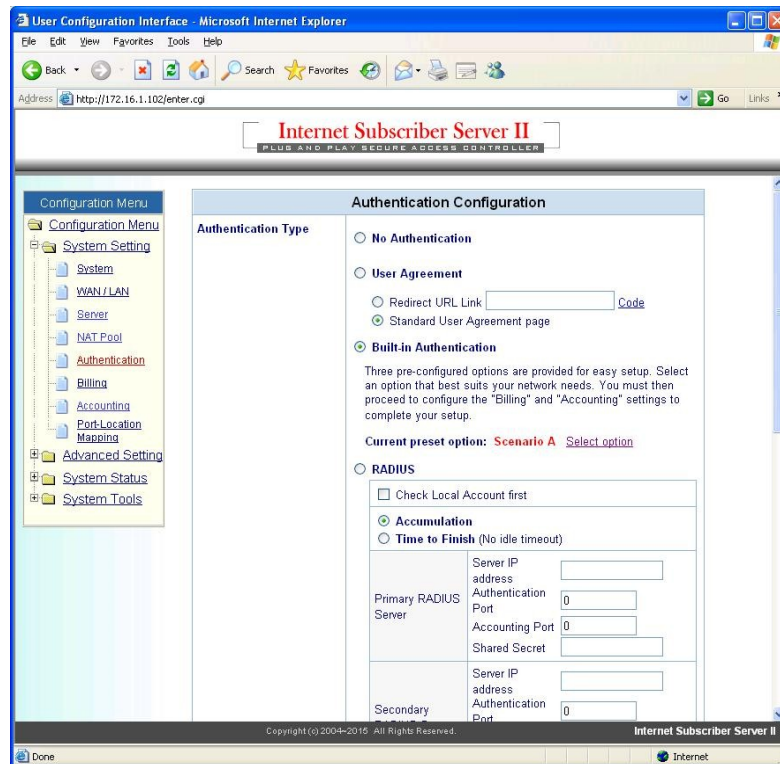
6. From the VLAN ID drop-down select 'PVID Setting'
7. Rename port 1's default VID (PVID) from 1 to 101 (room 1)



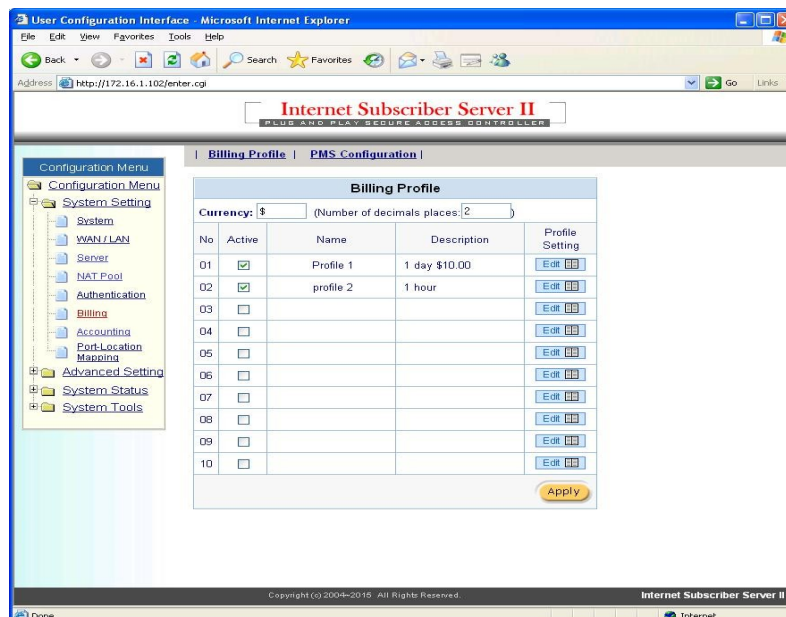
8. Click 'Apply'
9. Repeat above for other rooms (eg. room 2 would be on on VLAN 102)

NetComm IAC4000 Setup:

0. Click 'System Setting'
1. Click 'Authentication'
2. Select 'Built-in Authentication'
3. Select 'Scenario A' as the preset option



4. Navigate to 'Billing' menu
5. Create your desired profiles



6. Click 'Port Location Mapping'

7. The 'Location ID' and 'Port Identifier' fields are identical to the VLAN ID you entered in the Netgear FS750T

The screenshot shows the 'Port-Location Mapping' configuration page in the Internet Subscriber Server II web interface. The browser window is titled 'User Configuration Interface - Microsoft Internet Explorer' and the address bar shows 'http://172.16.1.102/enter.cgi'. The page has a navigation menu on the left with options like 'Configuration Menu', 'System Setting', 'Advanced Setting', 'System Status', and 'System Tools'. The main content area is titled 'Port-Location Mapping' and contains three sections: 'Single Create', 'Batch Create', and 'Backup/Restore'. The 'Single Create' section has fields for 'Location Identifier (ID)' (101), 'Port Identifier (ID)' (101), and 'Description' (room 1), with a status dropdown set to 'Charge for use' and an 'Add to List' button. The 'Batch Create' section has fields for 'Location ID From', 'Port ID From', and 'Batch Numbers', also with a status dropdown and 'Add to List' button. The 'Backup/Restore' section has sub-sections for 'Backup to Local PC' and 'Restore', each with fields for 'Remote TFTP Server IP Address', 'File Name', and 'Local PC File Path', and 'Apply' buttons. A note states: 'Note: Use only numbers for the Location Identifier field and Port Identifier field.' The footer shows 'Copyright (c) 2004-2015 All Rights Reserved.' and 'Internet Subscriber Server II'.

8. Repeat above for other rooms, or use the batch create feature